

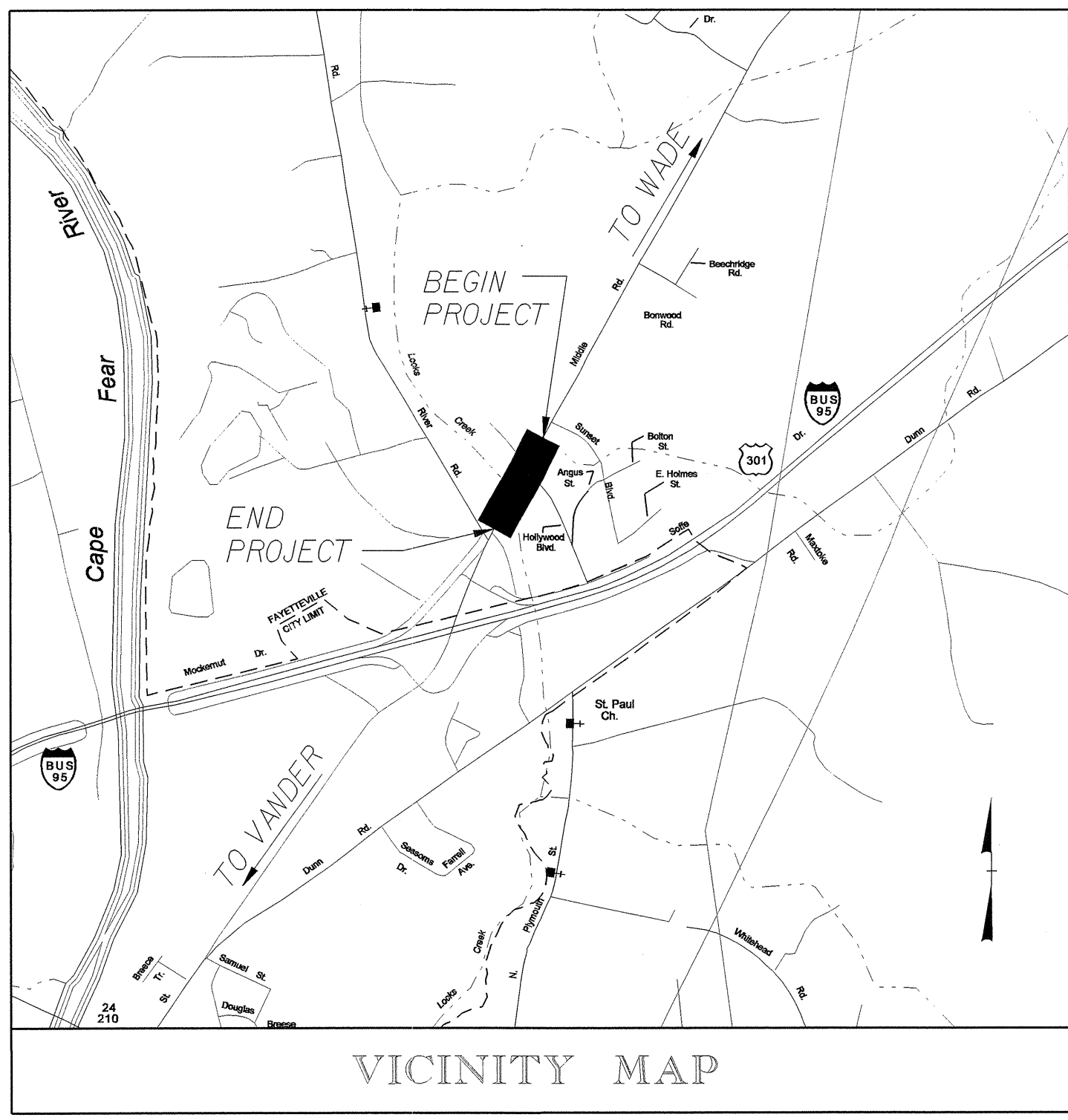
T.I.P. NO.	SHEET NO.
B-4093	UC-1

STATE OF NORTH CAROLINA
DIVISION OF HIGHWAYS

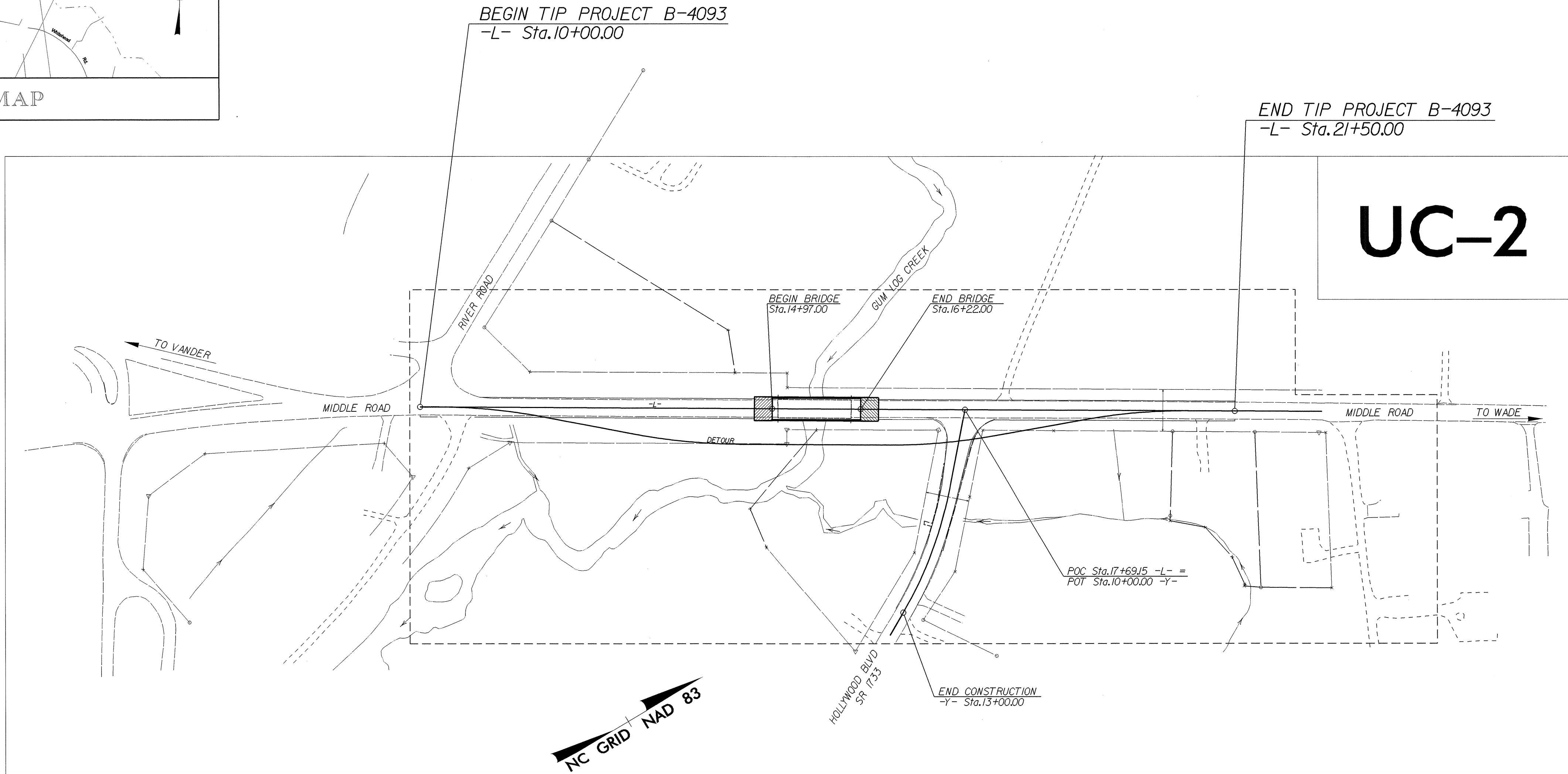
**UTILITY CONSTRUCTION PLANS
CUMBERLAND COUNTY**

LOCATION: BRIDGE NO. 81 OVER GUM LOG CREEK ON SR 1728 (MIDDLE RD.)
TYPE OF WORK: GRADING, PAVING, DRAINAGE, AND STRUCTURE

TIP: B-4093



CONTRACT: C201257



INDEX OF SHEETS	
SHEET NO.	DESCRIPTION
UC-1	TITLE SHEET
UC-2	UTILITY CONSTRUCTION PLAN SHEET

WATER AND SEWER OWNERS ON PROJECT
(1) WATER - FAYETTEVILLE PWC

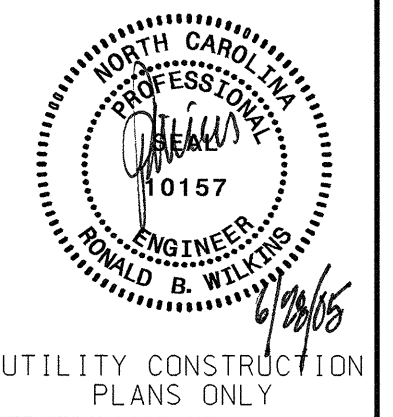
SEAL

6/10/05

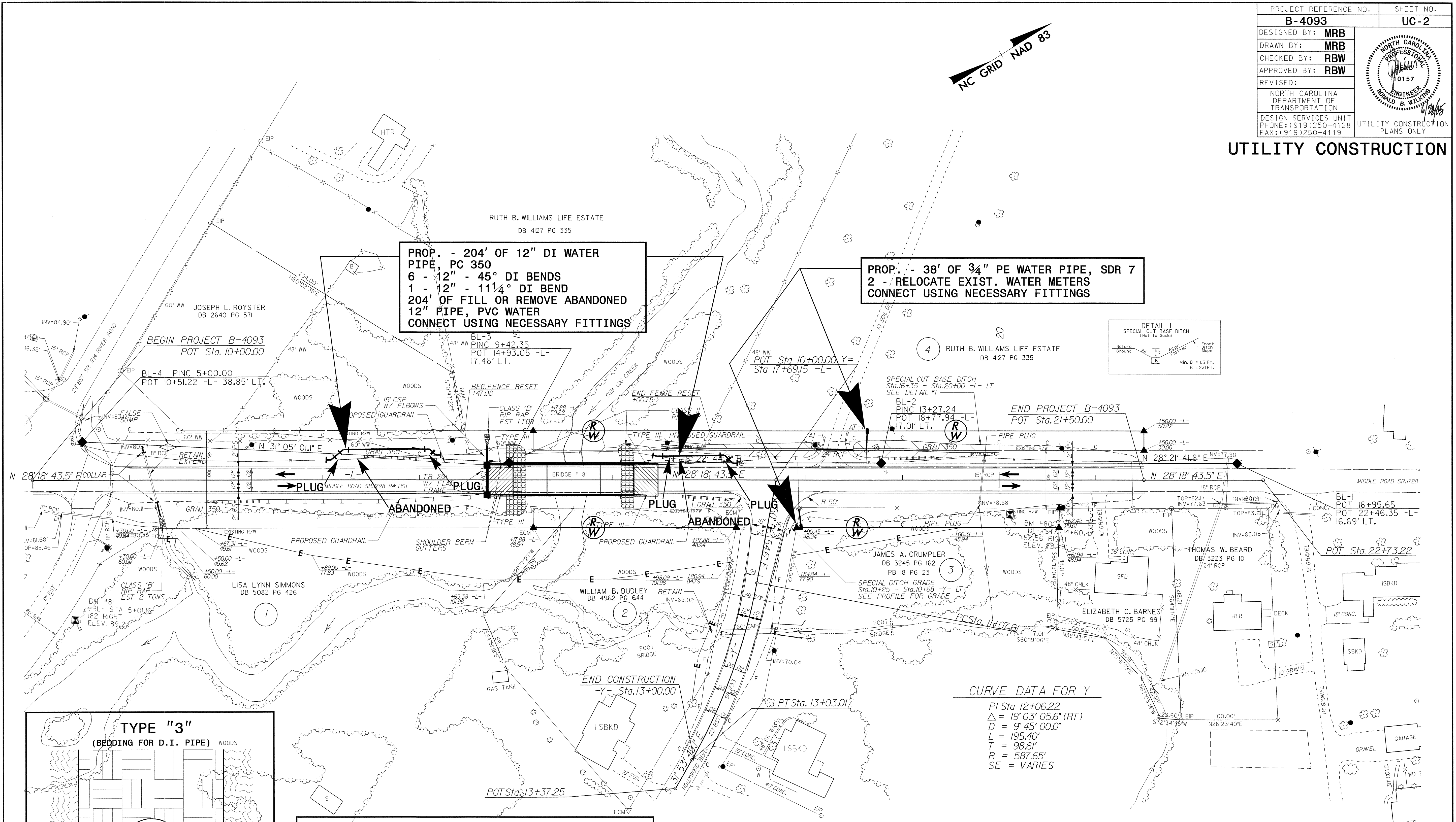
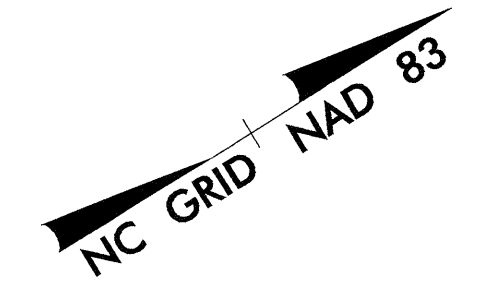
PREPARED IN THE OFFICE OF:
**DIVISION OF HIGHWAYS
DESIGN SERVICES
UTILITY SECTION**

1591 MAIL SERVICES CENTER
RALEIGH NC 27699-1591
PHONE (919) 250-4128
FAX (919) 250-4119

Roger Worthington, P.E. UTILITIES SECTION ENGINEER
R. B. WILKINS, P.E. UTILITIES SQUAD LEADER PROJECT ENGINEER
MICHAEL R. BRIGHT UTILITIES PROJECT DESIGNER

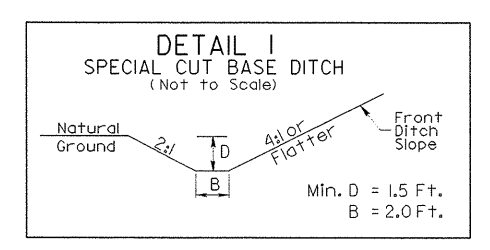


UTILITY CONSTRUCTION

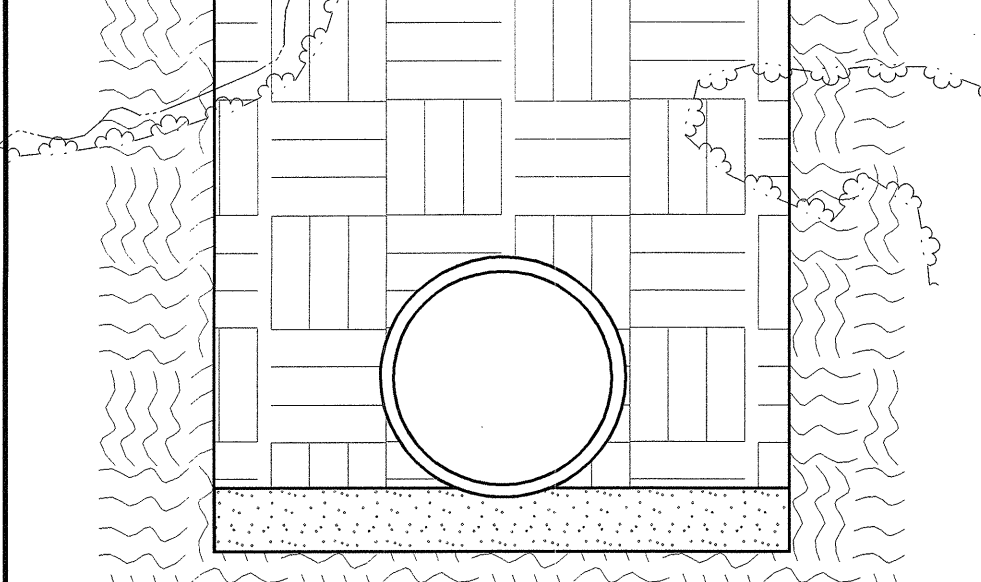


PROP. - 204' OF 12" DI WATER PIPE, PC 350
6 - 12" - 45° DI BENDS
1 - 12" - 111¼° DI BEND
204' OF FILL OR REMOVE ABANDONED 12" PIPE, PVC WATER
CONNECT USING NECESSARY FITTINGS

PROP. - 38' OF ¾" PE WATER PIPE, SDR 7
2 - RELOCATE EXIST. WATER METERS
CONNECT USING NECESSARY FITTINGS



TYPE "3"
(BEDDING FOR D.I. PIPE)



PIPE BEDDED IN 4" MINIMUM LOOSE SOIL. TRENCH BACKFILLED IN LOOSE 6" LAYERS COMPACTED TO TOP OF TRENCH USING LOCAL EXCAVATED MATERIAL, IF APPROVED BY THE ENGINEER, OR SELECT MATERIAL. ALL MATERIAL SHALL BE FREE OF ROCKS, FOREIGN MATERIAL, AND FROZEN EARTH. COMPACTION SHALL BE TO APPROX. 95% DENSITY IN ACCORDANCE WITH AASHTO T-99 AS MODIFIED BY THE DEPARTMENT OF TRANSPORTATION.

MAXIMUM TRENCH WIDTH AT TOP OF PIPE

NOMINAL PIPE SIZE (INCHES)	TRENCH WIDTH (INCHES)	NOMINAL PIPE SIZE (INCHES)	TRENCH WIDTH (INCHES)
4	28	20	44
6	30	24	48
8	32	30	54
10	34	36	60
12	36	42	66
14	38	48	72
16	40	54	78
18	42		

CURVE DATA FOR Y
 PI Sta. 12+06.22
 $\Delta = 19^{\circ} 03' 05.6" (RT)$
 $D = 9^{\circ} 45' 00.0"$
 $L = 195.40'$
 $T = 98.61'$
 $R = 587.65'$
 $SE = VARIES$

8/17/99

