

PROJECT: 35881

STATE OF NORTH CAROLINA
 DIVISION OF HIGHWAYS
 PLAN FOR PROPOSED
 HIGHWAY EROSION CONTROL

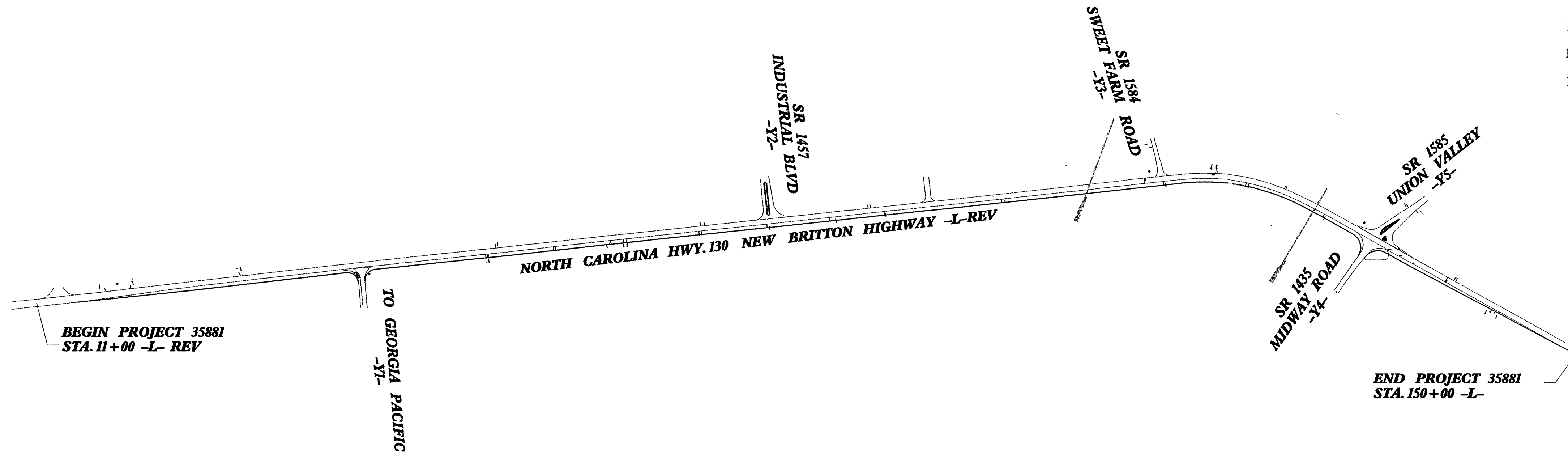
COLUMBUS COUNTY

LOCATION: NC 130 FROM SR 1435 TO SECC
 TYPE OF WORK: WIDENING, GRADING, PAVING, DRAINAGE,
 AND STRUCTURES

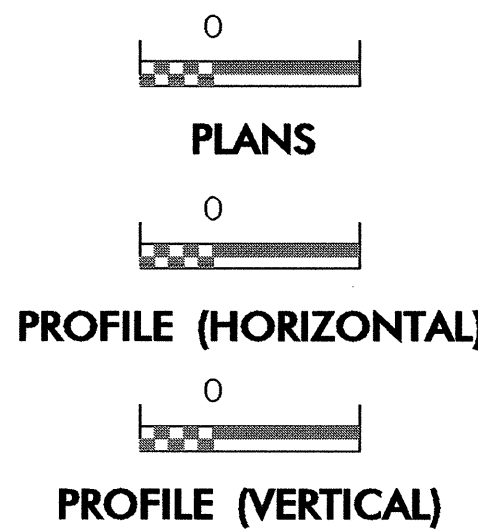
STATE	STATE PROJECT REFERENCE NO.	SHEET NO.	TOTAL SHEETS
N.C.	35881	EC-1	
STATE PROJ. NO.	F.A. PROJ. NO.	DESCRIPTION	

EROSION AND SEDIMENT CONTROL MEASURES

Sed. #	Description	Symbol
	Reforestation	
1630.03	Temporary Silt Ditch	
1630.05	Temporary Diversion	
1605.01	Temporary Silt Fence	
1606.01	Special Sediment Control Fence	
1622.01	Temporary Berms and Slope Drains	
1630.01	Riser Basin	
1630.02	Silt Basin Type B	
1633.01	Temporary Rock Silt Check Type-A	
1633.02	Temporary Rock Silt Check Type-B	
1634.01	Temporary Rock Sediment Dam Type-A	
1634.02	Temporary Rock Sediment Dam Type-B	
1635.01	Rock Pipe Inlet Sediment Trap Type-A	
1635.02	Rock Pipe Inlet Sediment Trap Type-B	
1636.01	Rock Silt Screen	
1630.04	Stilling Basin	
	Rock Inlet Sediment Trap:	
1632.01	Type A	
1632.02	Type B	
1632.03	Type C	



GRAPHIC SCALE



ROADSIDE ENVIRONMENTAL UNIT
 DIVISION OF HIGHWAYS
 STATE OF NORTH CAROLINA

Prepared in the Office of:
ROADSIDE ENVIRONMENTAL UNIT
 1 South Wilmington St.
 Raleigh, NC 27611
2002 STANDARD SPECIFICATIONS

Roadway Standard Drawings
 The following roadway english standards as appear in "Roadway Standard Drawings"- Roadway Design Unit - N. C. Department of Transportation - Raleigh, N. C., dated January 20, 2002 and the latest revision thereto are applicable to this project and by reference hereby are considered a part of these plans.

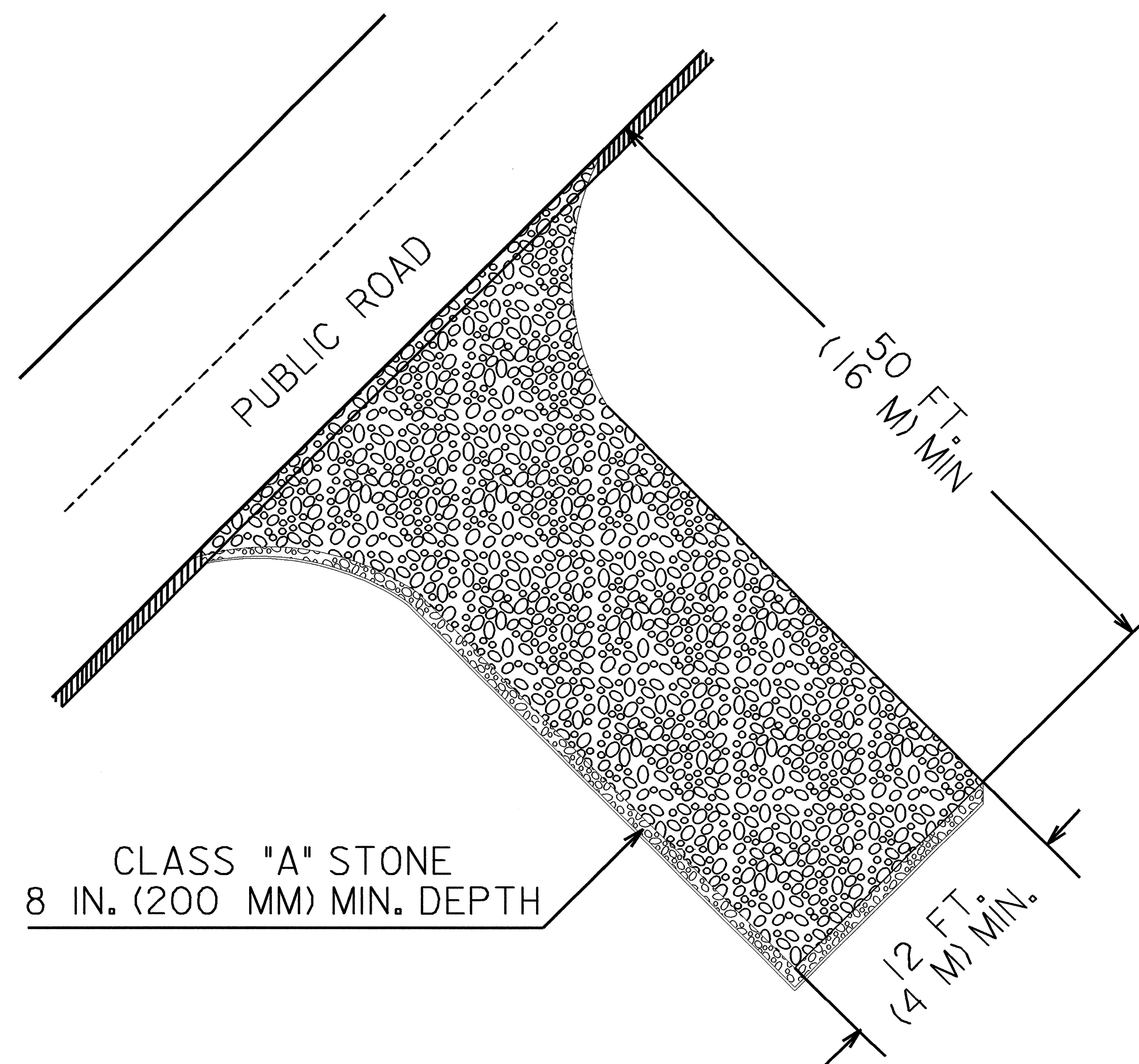
- 1605.01 Temporary Silt Fence
- 1632.03 Rock Inlet Sediment Trap Type C
- 1633.01 Temporary Rock Silt Check Type A
- 1634.02 Temporary Rock Sediment Dam Type B
- 1635.01 Rock Pipe Inlet Sediment Trap Type A
- 1630.03 Temporary Silt Ditch
- 1630.04 Stilling Basin

PROJ. REFERENCE NO.	SHEET NO.	TOTAL SHEETS
35881	EC-2	
STATE PROJECT NO.	F.A. PROJ. NO.	DESCRIPTION

TEMPORARY GRAVEL CONSTRUCTION ENTRANCE

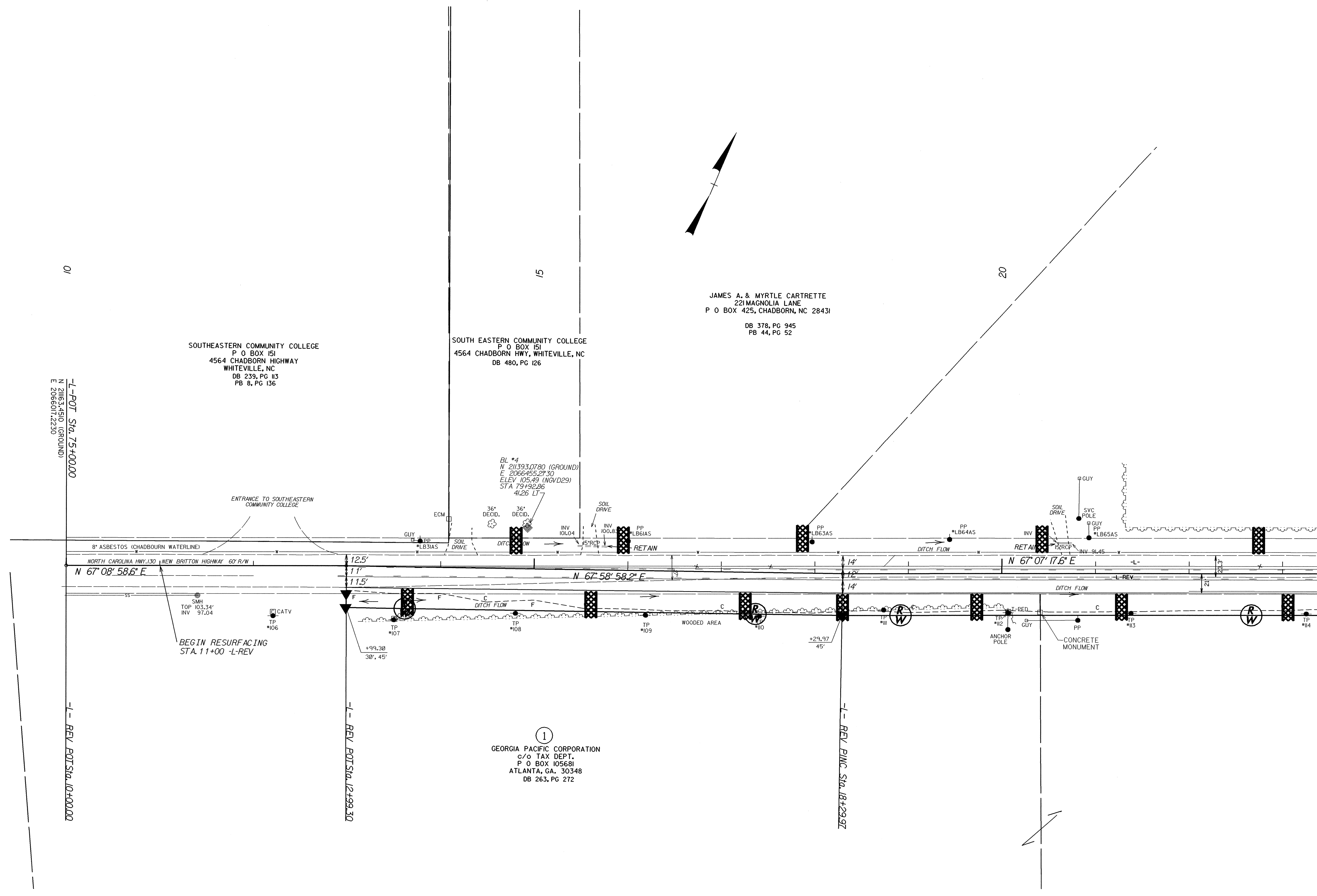
NOTES:

1. TURNING RADIUS SUFFICIENT TO ACCOMODATE LARGE TRUCKS SHALL BE PROVIDED.
2. ENTRANCE(S) SHOULD BE LOCATED TO PROVIDE FOR UTILIZATION BY ALL CONSTRUCTION VEHICLES.
3. MUST BE MAINTAINED IN A CONDITION WHICH WILL PREVENT TRACKING OR DIRECT FLOW OF MUD ONTO STREETS. PERIODIC TOPDRESSING WITH STONE WILL BE NECESSARY.
4. ANY MATERIAL TRACKED ONTO THE ROADWAY MUST BE CLEANED UP IMMEDIATELY.
5. GRAVEL CONSTRUCTION ENTRANCE SHALL BE LOCATED AT ALL POINTS OF INGRESS AND EGRESS UNTIL SITE IS STABILIZED. FREQUENT CHECKS OF THE DEVICE AND TIMELY MAINTENANCE MUST BE PROVIDED.
6. NUMBER AND LOCATION OF CONSTRUCTION ENTRANCES TO BE DETERMINED BY THE ENGINEER

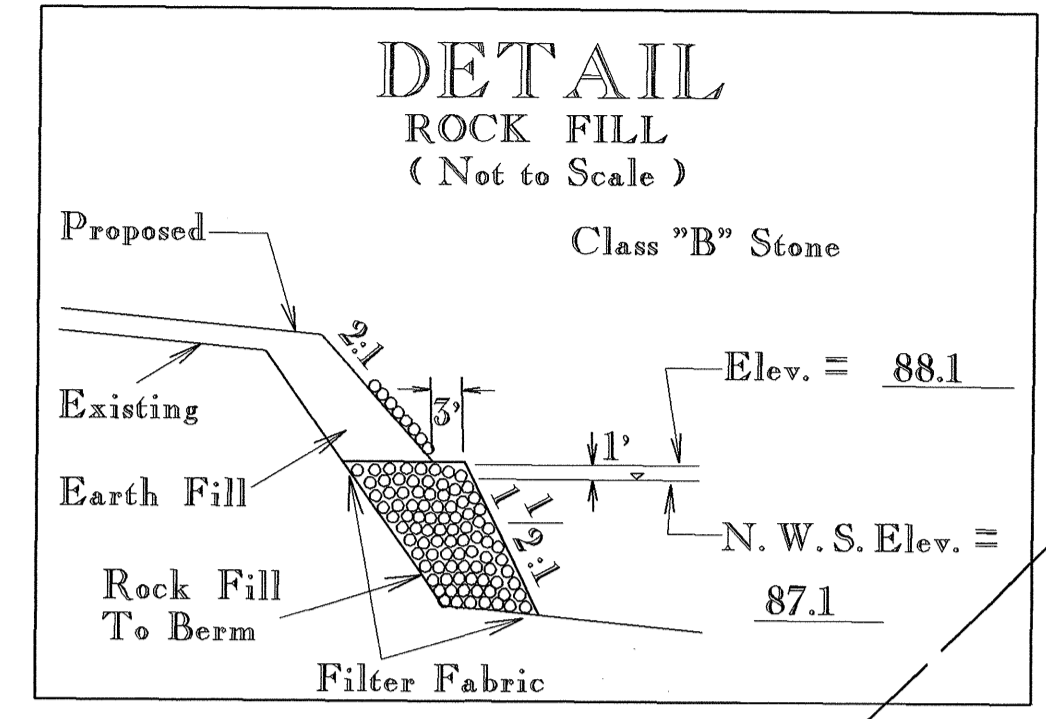


NOTE: FILTER FABRIC TO BE PLACED BENEATH STONE

8.17/99

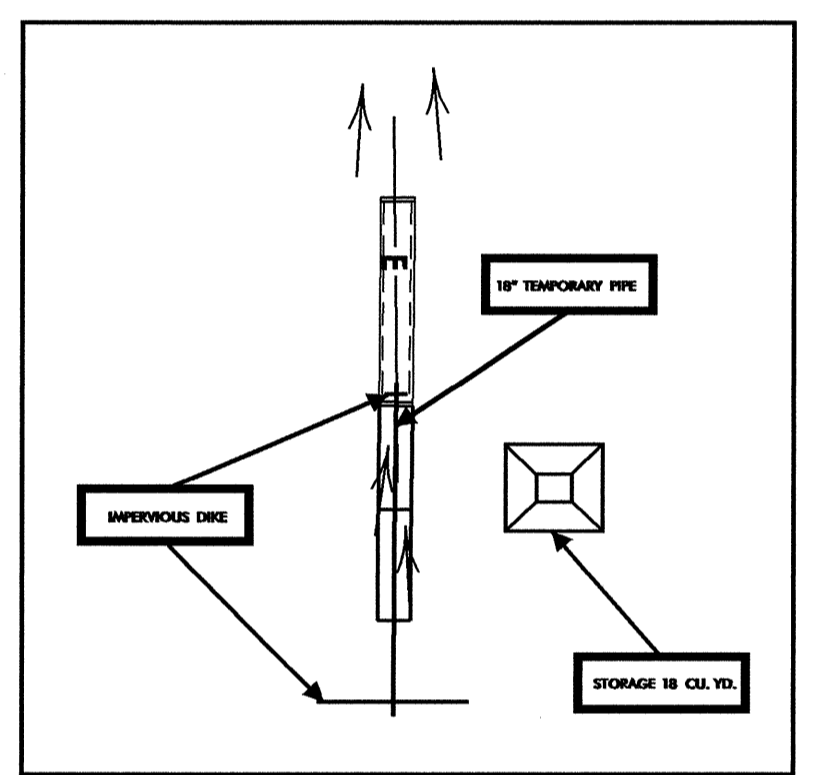


MATCHLINE STA. 25+40.07 -L- REV



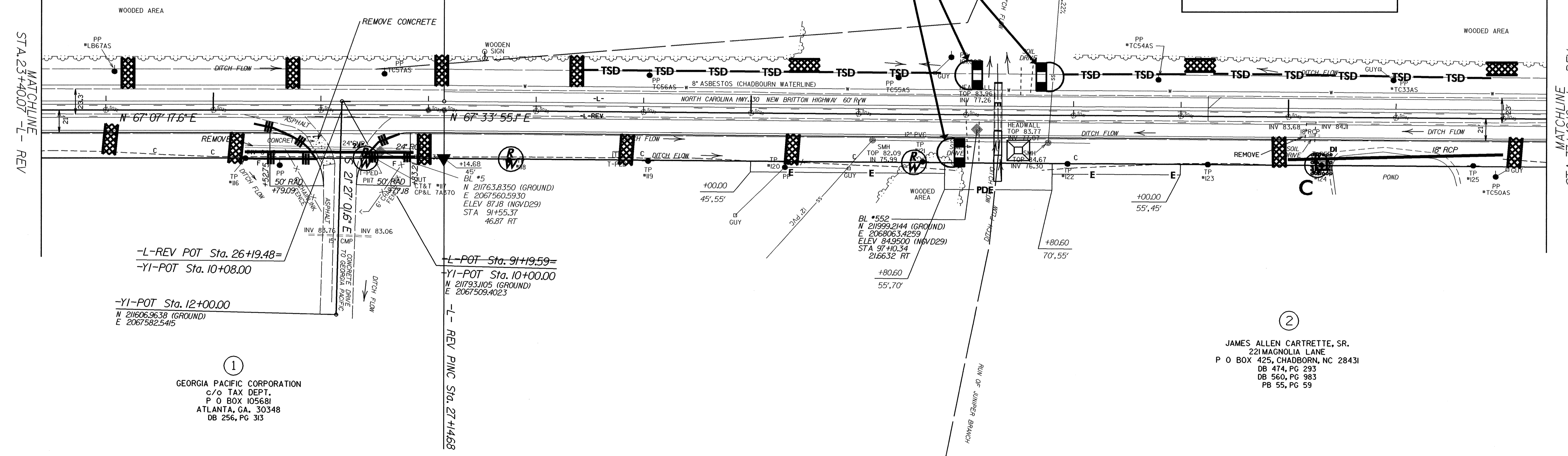
35 + 41 RT to 36 + 54 RT

MABLE PREVATTE ESTATE
DB 172, PG 576 (for Judgement)
DB 148, PG 218
DB 560, PG 983
PB 55, PG 59



CONSTRUCTION SEQUENCE
1. BUILD STILLING BASIN 18 CU. YD.
2. CONSTRUCT IMPERVIOUS DIKE
3. INSTALL TEMPORARY 18" CMP
4. DIVERT WATER THROUGH CULVERT
5. COMPLETE ROADWAY

14 x 7 x 3
4' weir



-L-REV POT Sta. 26+19.48=
-YI-POT Sta. 10+08.00

-YI-POT Sta. 12+00.00
N 211606.9638 (GROUND)
E 2067582.5415

-L-POT Sta. 9+19.59=
-YI-POT Sta. 10+00.00
N 211793.1105 (GROUND)
E 2067509.4023

-L-REV P.V.C. Sta. 27+14.68

1
GEORGIA PACIFIC CORPORATION
c/o TAX DEPT.
P O BOX 105681
ATLANTA, GA. 30348
DB 256, PG 313

2
JAMES ALLEN CARTRETTE, SR.
221 MAGNOLIA LANE
P O BOX 425, CHADBORN, NC 28431
DB 474, PG 293
DB 560, PG 983
PB 55, PG 59

STA. 23+40.07 -L- REV

STA. 37+40.16 -L- REV

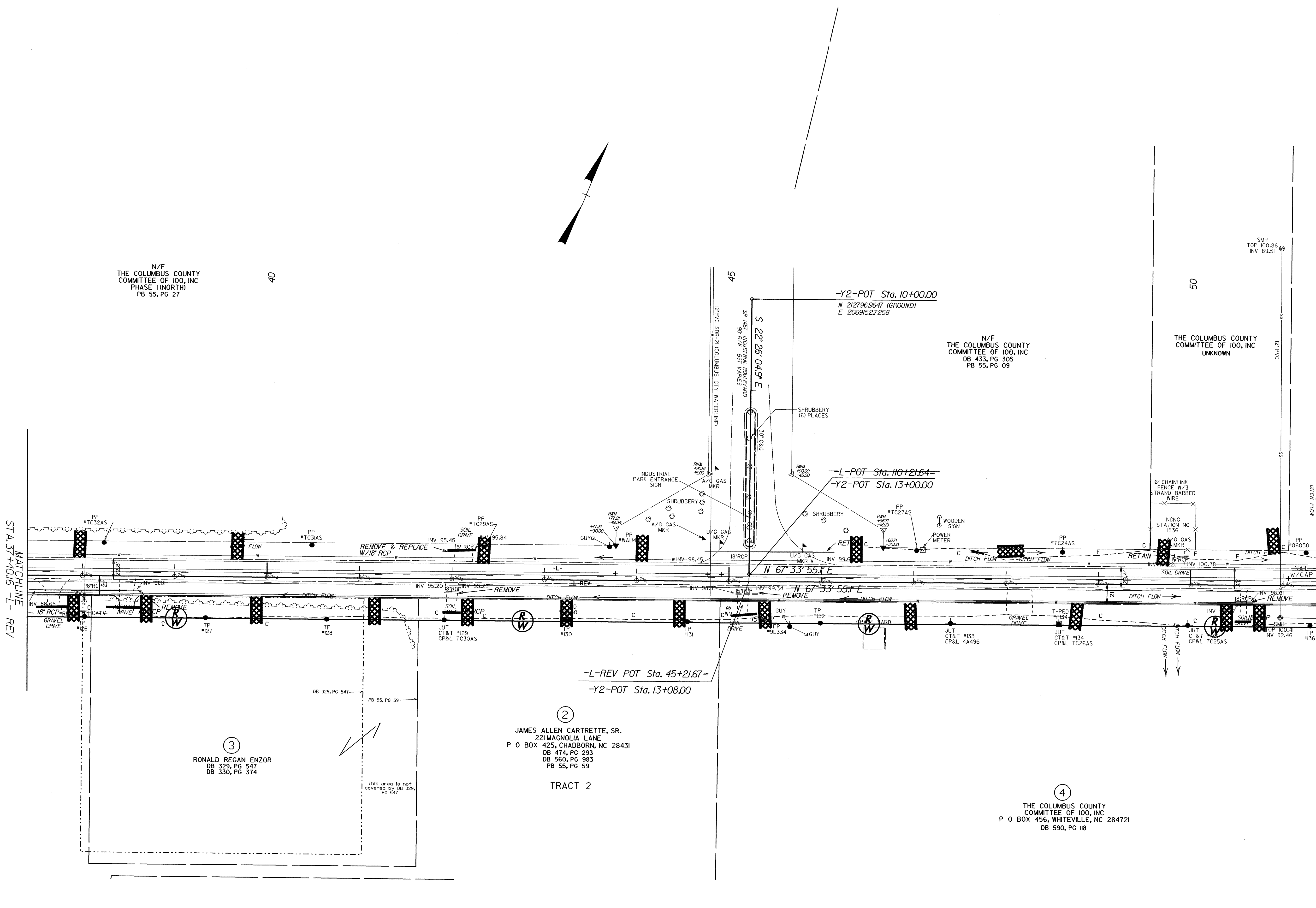
N/F
THE COLUMBUS COUNTY
COMMITTEE OF 100, INC
PHASE I (NORTH)
PB 55, PG 27

40

N/F
THE COLUMBUS COUNTY
COMMITTEE OF 100, INC
DB 433, PG 305
PB 55, PG 09

THE COLUMBUS COUNTY
COMMITTEE OF 100, INC
UNKNOWN

MATCHLINE
STA. 37+40.16 -L- REV



MATCHLINE
STA. 50+40.15 -L- REV

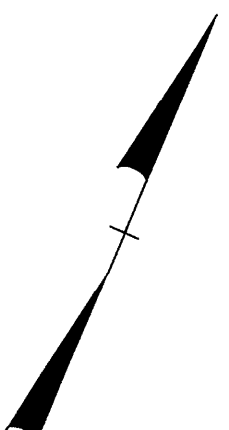
③
RONALD REGAN ENZOR
DB 329, PG 547
DB 330, PG 374

②
JAMES ALLEN CARTRETTE, SR.
221 MAGNOLIA LANE
P O BOX 425, CHADBORN, NC 28431
DB 474, PG 293
DB 560, PG 983
PB 55, PG 59

TRACT 2

④
THE COLUMBUS COUNTY
COMMITTEE OF 100, INC
P O BOX 456, WHITEVILLE, NC 284721
DB 590, PG 118

This area is not covered by DB 329, PG 547



CONFLANDEY, INC
 DB 546, PG 598
 PB 63, PG 53

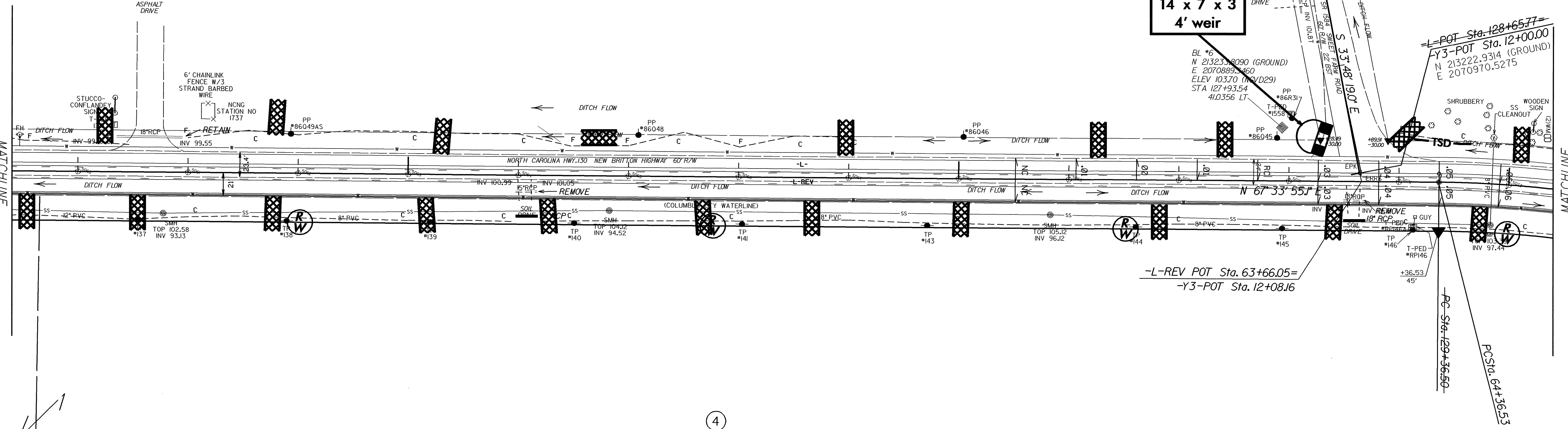
55

60

65

MATCHLINE
 STA.50+40.15 -L- REV

MATCHLINE
 STA.65+40.17 -L- REV



14 x 7 x 3
 4' weir

-Y3-POT Sta. 10+00.00
 N 213389.1181 (GROUND)
 E 2070859.2531

-L-POT Sta. 128+65.77
 -Y3-POT Sta. 12+00.00
 N 213222.9314 (GROUND)
 E 2070970.5275

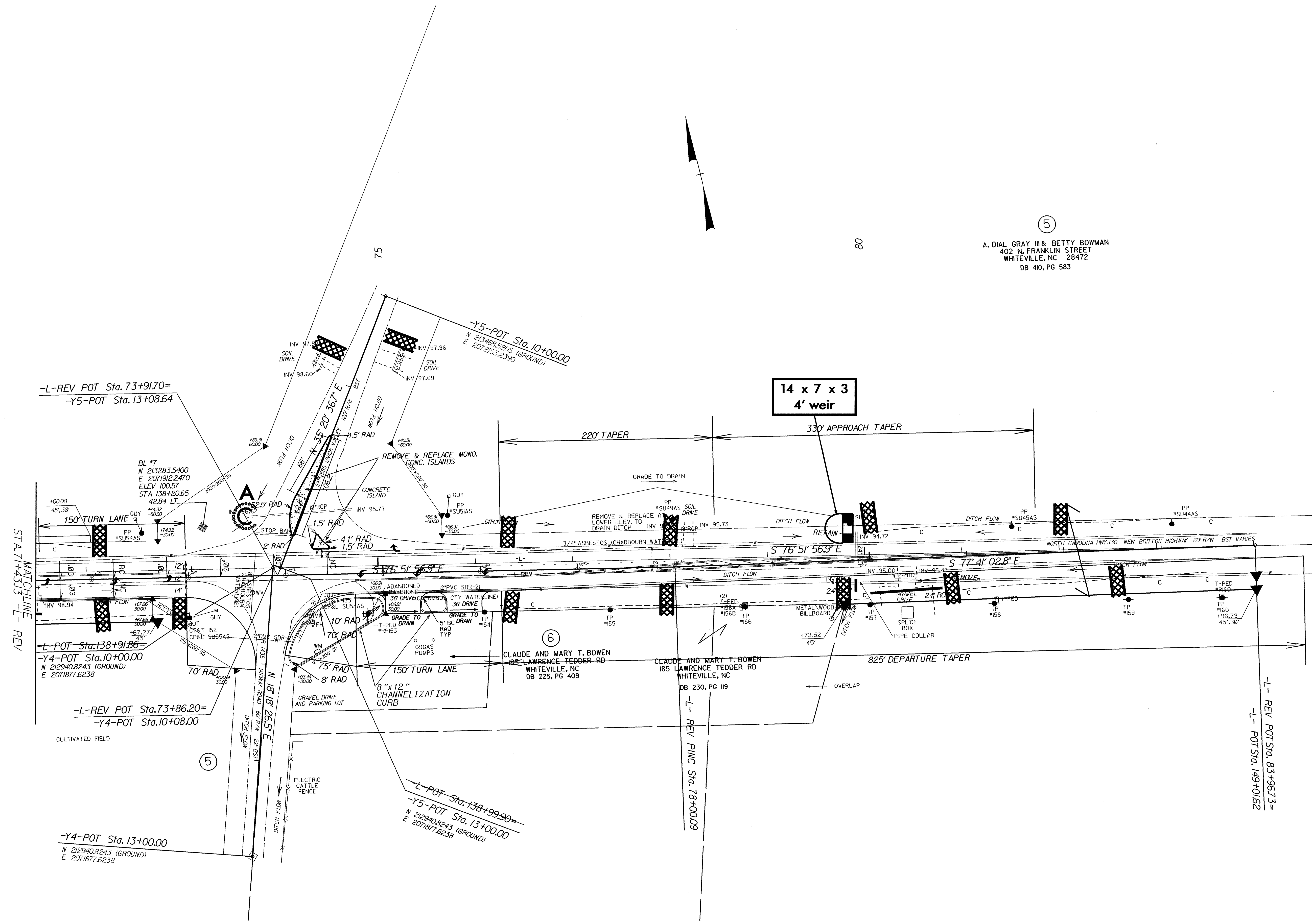
BL *6
 N 213235.8090 (GROUND)
 E 2070889.3460
 ELEV 103.70 (MVD29)
 STA 127+93.54
 41.0356 LT

-L-REV POT Sta. 63+66.05=
 -Y3-POT Sta. 12+08.16

5

A. DIAL GRAY III & BETTY BOWMAN
402 N. FRANKLIN STREET
WHITEVILLE, NC 28472
DB 410, PG 583

80



APPROVED FOR CONSTRUCTION