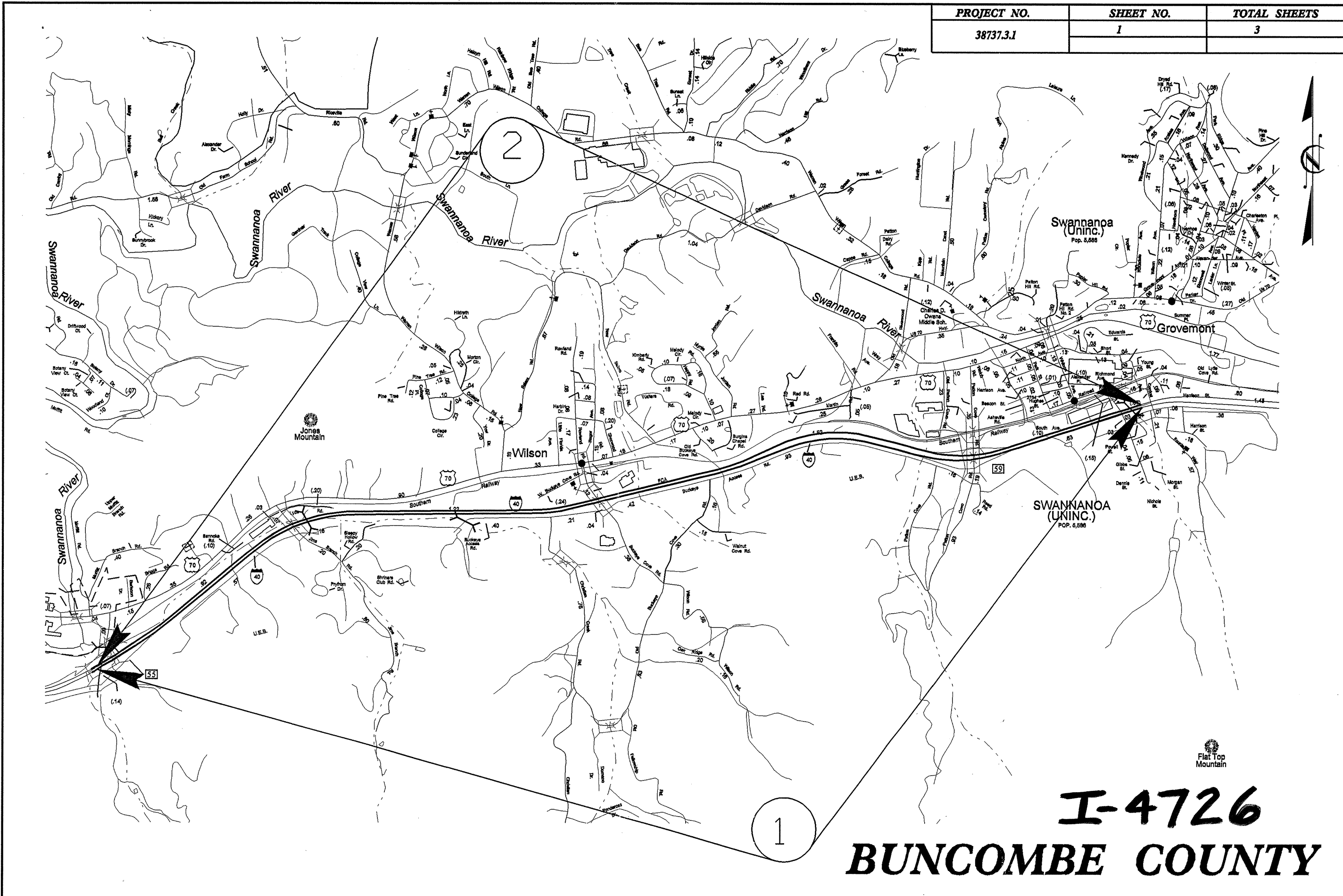
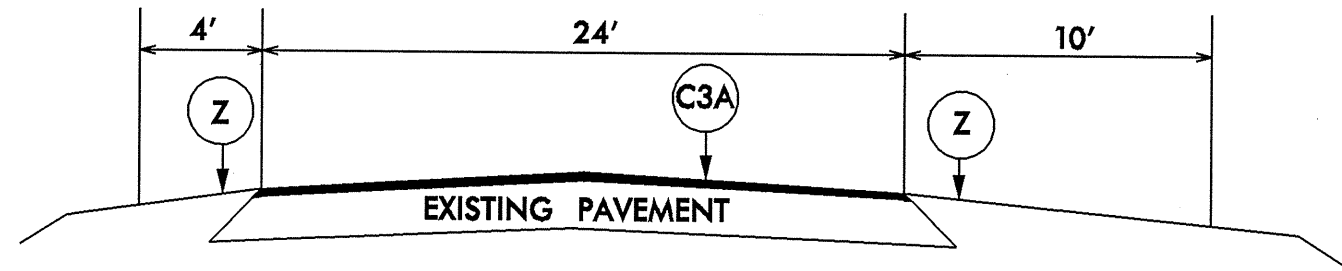


PROJECT NO.	SHEET NO.	TOTAL SHEETS
38737.3.1	1	3

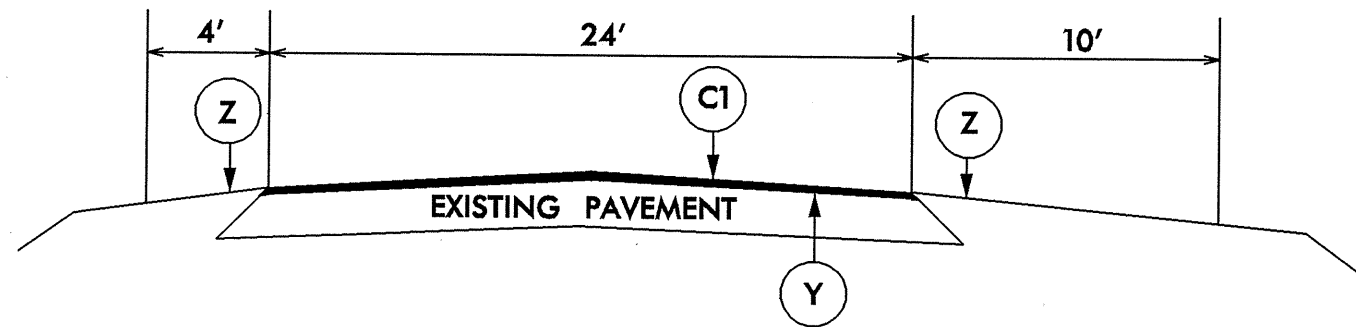


I-4726
BUNCOMBE COUNTY

PROJECT NO.	SHEET NO.	TOTAL SHEETS
38737.3.1	2	3



**TYPICAL SECTION NO.1
USE WITH ALTERNATE AA1**



**TYPICAL SECTION NO.2
USE WITH ALTERNATE AA2**

PAVEMENT SCHEDULE	
C1	PROPOSED APPROXIMATE 2" ASPHALT CONCRETE SURFACE COURSE TYPE SI2.5C AT AN AVERAGE RATE OF 224 LBS PER SQ. YD.
C3A	2" HOT IN PLACE ASPHALT RECYCLING USING APPROX. 45# ADMIXTURE PER SQ. YD.
Y	2" MILLING ON TRAVEL LANES ONLY
Z	MILLED RUMBLE STRIPS

PROJECT NO.	SHEET NO.
38737.3.1	3

SUMMARY OF QUANTITIES

PROJECT NO	COUNTY	MAP NO	ROUTE	DESCRIPTION	TYP NO	LENGTH MI	WIDTH FT	MILLED RUMBLE STRIPS LF	PATCHING EXIST. PAVEMENT TON	6"X 90 M THERMO LF	6"X 120 M THERMO LF	12"X90 M THERMO LF	6" X40 M HOT SPRAY THERMO PVMNT. MARKING LINES LF	SNOW PLOWABLE MARKERS EA	FLASHING ARROW PANELS, TYPE C EA	TRUCK MTD. IMPACT ATTENUAT OR (60 MPH) EA	6" WHITE PAINT LF	6" YELLOW PAINT LF	12" PAINT LF
38737.3.1	Buncombe	1	I-40 EAST BOUND	CONC PAVEMENT TO BRIDGE #484	1	4.4	24	46,464		46,464	5,808	1,800	46,464	376	1	1	58,080	46,464	3,600
		2	I-40 WEST BOUND	BRIDGE #484 TO CONC. PAVEMENT	1	4.4	24	46,464		46,464	5,808	1,800	46,464	380			58,080	46,464	3,600
TOTAL FOR PROJ NO. 38737.3.1						8.8		92,928	800	92,928	11,616	3,600	92,928	756	1	1	116,160	92,928	7,200
GRAND TOTAL						8.8		92,928	800	92,928	11,616	3,600	92,928	756	1	1	209,088		7,200

SUMMARY OF QUANTITIES - ALTERNATE ONE

PROJECT NO	COUNTY	MAP NO	ROUTE	DESCRIPTION	TYP NO	LENGTH MI	WIDTH FT	EMULSIFIED ASPHALT REJUVENATING AGENT GAL	HOT MIX ASPHALT ADMIXTURE TONS	HIP RECYCLING 2", TYPE S12.5C SY	PG 64-22 PLANT MIX TONS	2" MILLING SY
38737.3.1	Buncombe	1	I-40 EAST BOUND	CONC PAVEMENT TO BRIDGE #484	1	4.4	24	6,195	1,408	61,952	77	6806
		2	I-40 WEST BOUND	BRIDGE #484 TO CONC. PAVEMENT	1	4.4	24	6,195	1,408	61,952	77	
TOTAL FOR PROJ NO. 38737.3.1						8.8		12,390	2,816	123,904	154	6806
GRAND TOTAL						8.8		12,390	2,816	123,904	154	6806

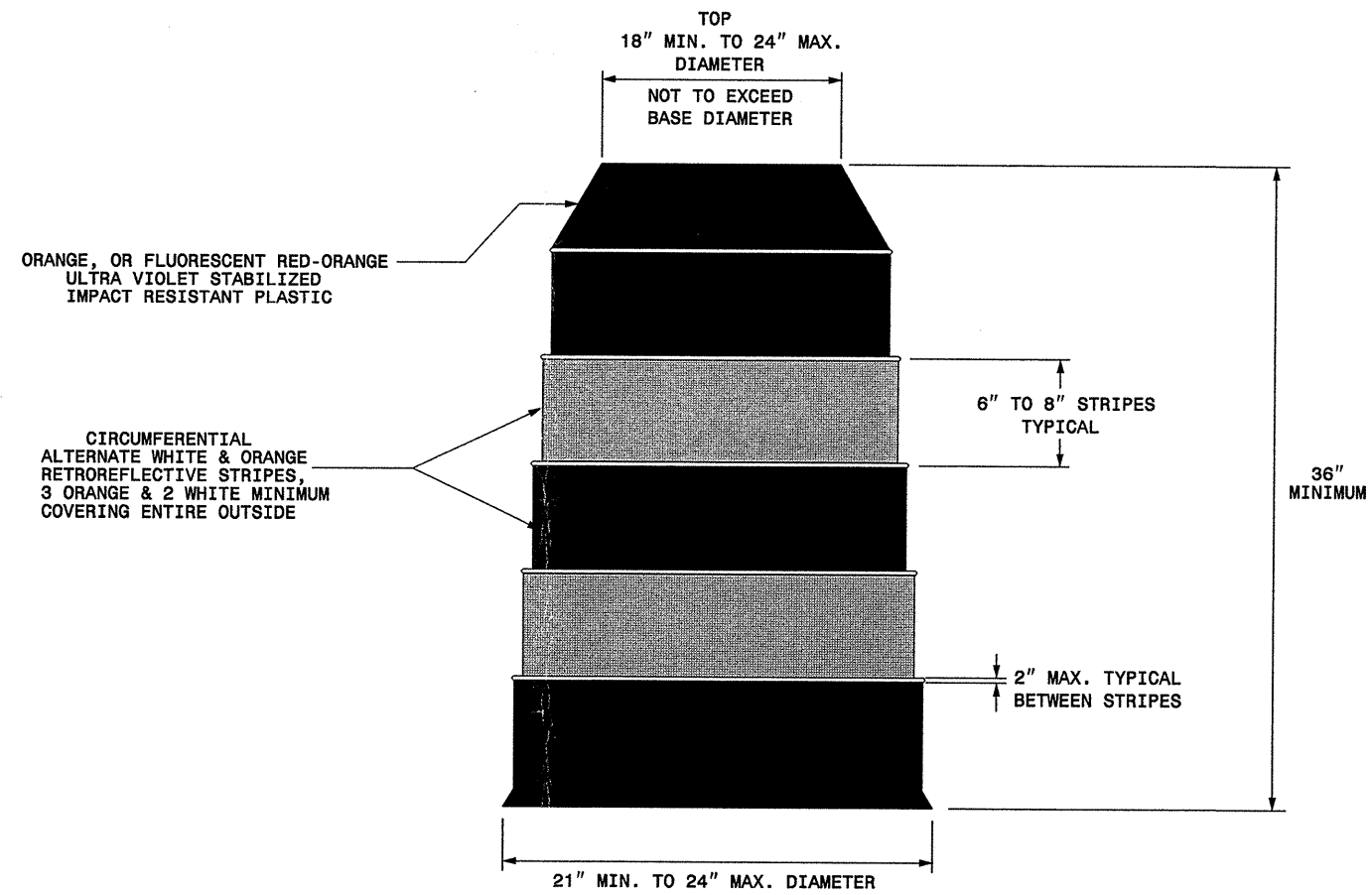
SUMMARY OF QUANTITIES - ALTERNATE TWO

PROJECT NO	COUNTY	MAP NO	ROUTE	DESCRIPTION	TYP NO	LENGTH MI	WIDTH FT	2" MILLING SY	ASPHALT CONCRETE SURFACE COURSE TYPE S12.5C TONS	PG 70-22 PLANT MIX TONS
38737.3.1	Buncombe	1	I-40 EAST BOUND	CONC PAVEMENT TO BRIDGE #484	1	4.4	24	68,758	7834	431
		2	I-40 WEST BOUND	BRIDGE #484 TO CONC. PAVEMENT	1	4.4	24	61,952	7685	423
TOTAL FOR PROJ NO. 38737.3.1						8.8		130,710	15,519	854
GRAND TOTAL						8.8		130,710	15,519	854

STATE OF
NORTH CAROLINA
DEPT. OF TRANSPORTATION
DIVISION OF HIGHWAYS
RALEIGH, N.C.

ENGLISH STANDARD DRAWING FOR
DRUMS

SHEET 1 OF 1
1130D01



GENERAL NOTES

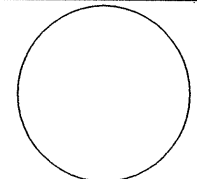

- BALLASTING SHALL BE ACHIEVED BY THE SAND BAG, TIRE-SIDEWALL BALLAST, OR PREFORMED WEIGHTED BASE BALLASTING METHODS. DO NOT PLACE BALLAST ON TOP OF THE DRUM.
- IF NECESSARY PLACE THE NAME OF THE AGENCY, CONTRACTOR, OR SUPPLIER ON NON-RETROREFLECTIVE DRUM SURFACES. SHOW THE LETTERS AND NUMBERS USING A NON-RETROREFLECTIVE COLOR AND NOT OVER 2" IN HEIGHT.

STATE OF
NORTH CAROLINA
DEPT. OF TRANSPORTATION
DIVISION OF HIGHWAYS
RALEIGH, N.C.

ENGLISH STANDARD DRAWING FOR
DRUMS

SHEET 1 OF 1
1130D01

30-MAR-2006 17:56
\\DOT\DFSR001\ON\GROUPS-WZTCCC\design\group4\squod4a\resurfacing\dlv3\3873731buncombel-4726\3873731tcpidrums_englsh030405.dgn
psymore AT WZT2064ZT

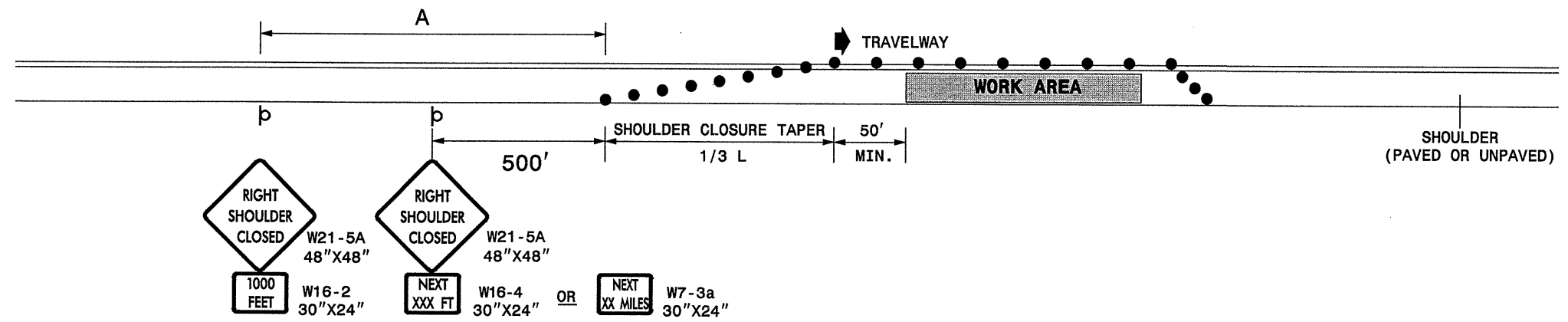
APPROVED: _____ DATE: _____	REPLACEMENT DETAIL FOR RSD 1130.01	
SEAL 		
SCALE: NONE		REVISIONS
DATE: 4/02		11/02
DWG. BY: MMM		
DESIGN BY: MMM		
REVIEWED BY: MMM		

STATE OF NORTH CAROLINA
DEPT. OF TRANSPORTATION
DIVISION OF HIGHWAYS
RALEIGH, N.C.

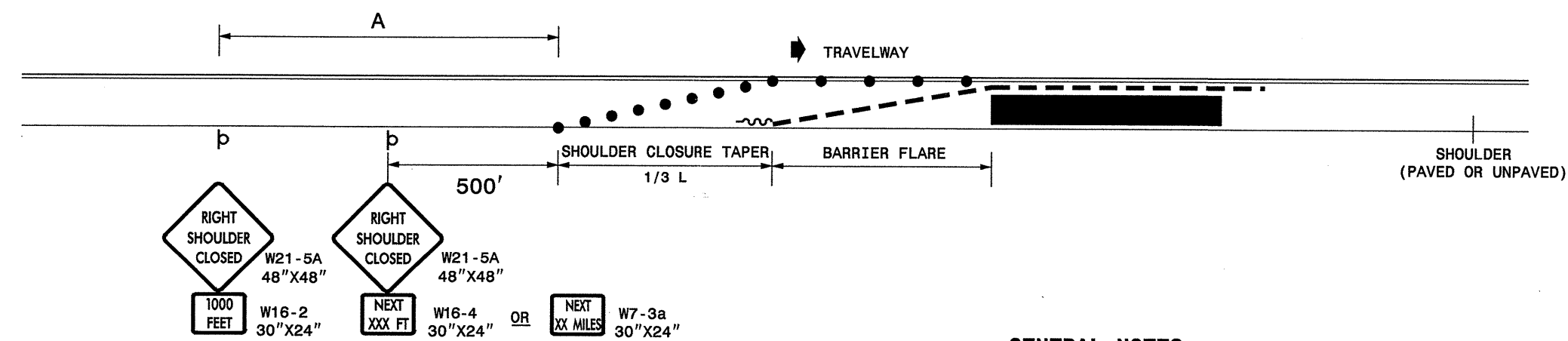
1-05

ENGLISH STANDARD DRAWING FOR
TEMPORARY SHOULDER CLOSURES

SHOULDER CLOSURES UTILIZING DRUMS



SHOULDER CLOSURES UTILIZING TEMPORARY BARRIER



GENERAL NOTES

- PLACE SHOULDER CLOSURE SIGNS ON THE SAME SIDE AS THE SHOULDER THAT IS CLOSED.
- PLACE DRUMS IN THE SHOULDER TAPER AT THE MAXIMUM SPACING EQUAL IN FEET TO THE POSTED SPEED LIMIT. THE MAXIMUM SPACING OF DRUMS ALONG THE WORK AREA AND BARRIER FLARE IS EQUAL IN FEET TO 2 TIMES THE POSTED SPEED LIMIT.
- FLARE THE APPROACH END OF PORTABLE CONCRETE BARRIER BEYOND THE SHOULDER AND USE A CRASH CUSHION FOR PROTECTION IF THE EXPOSED END OF THE BARRIER IS WITHIN THE "CLEAR ZONE".
- USE STATIONARY SIGNS FOR LONG TERM OPERATIONS (LONGER THAN 3 DAYS).
- REFER TO STD. 1101.11 SHEETS 1, 3, & 4, FOR "L" DISTANCE, BARRIER FLARE RATES, AND SIGN SPACING.

LEGEND

- ~ TEMPORARY CRASH CUSHION
- - - PORTABLE CONCRETE BARRIER
- DRUM
- ⊔ STATIONARY OR PORTABLE SIGN
- ➔ DIRECTION OF TRAFFIC FLOW

SHEET 1 OF 1
1101D04

SHEET 1 OF 1
1101D04

ENGLISH STANDARD DRAWING FOR
TEMPORARY SHOULDER CLOSURES

STATE OF NORTH CAROLINA
DEPT. OF TRANSPORTATION
DIVISION OF HIGHWAYS
RALEIGH, N.C.

30-MAR-2006 17:58 \\dot\dfsroot\group4\resur\fac\div13\3873731buncombel-4726\3873731tcp2shoulder\closure\es05.dgn AT WZTC206427 pseyamore

APPROVED: _____ DATE: _____

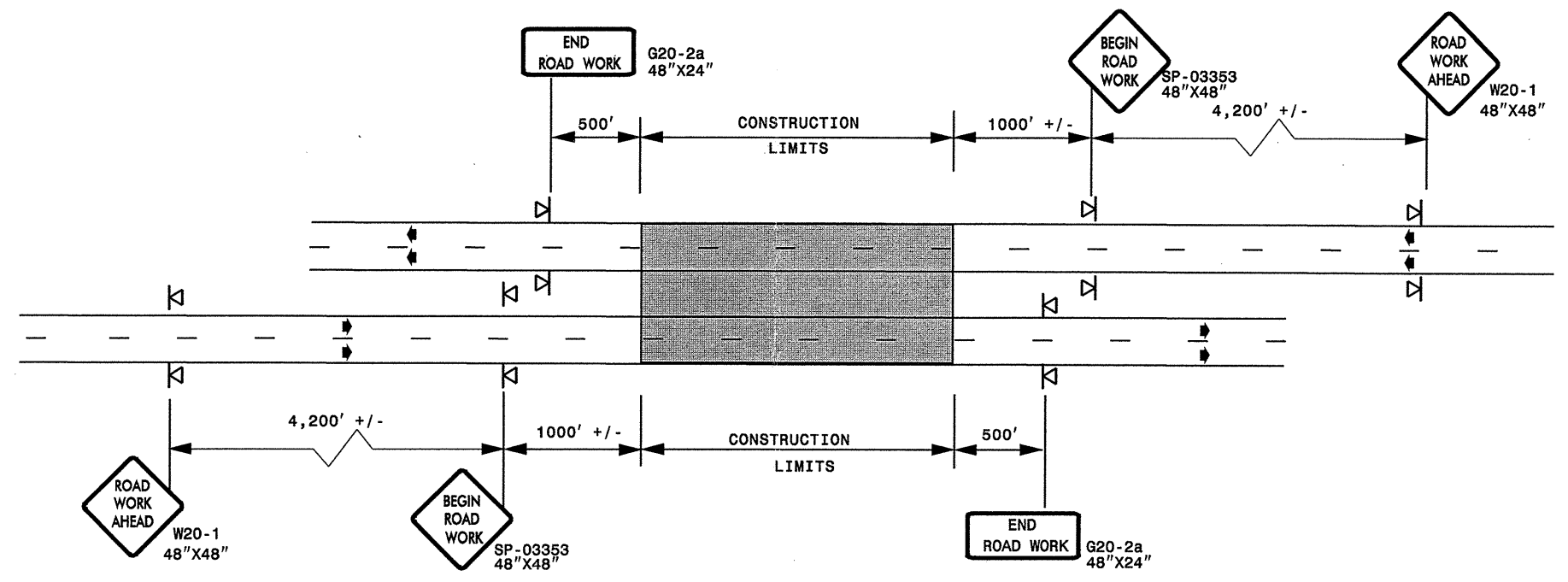
SEAL

REPLACEMENT DETAIL FOR RSD 1101.04

SCALE: NONE	REVISIONS
DATE: 11/04	08/05
DWG. BY: PS	
DESIGN BY: JPG	
REVIEWED BY: MMM	

ADVANCED WORK ZONE WARNING SIGNING FOR FREEWAYS (4 LANES OR GREATER)

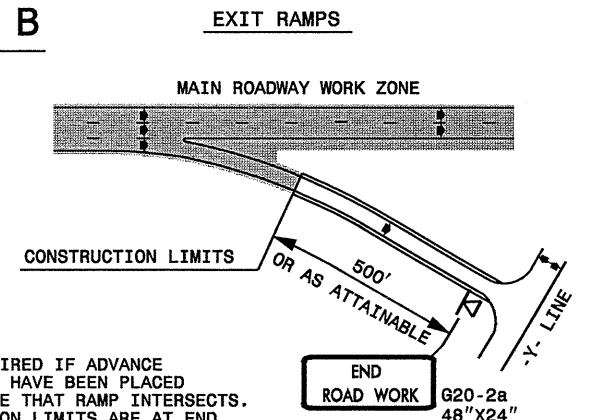
DETAIL A



STATE OF NORTH CAROLINA
DEPT. OF TRANSPORTATION
DIVISION OF HIGHWAYS
RALEIGH, N.C.

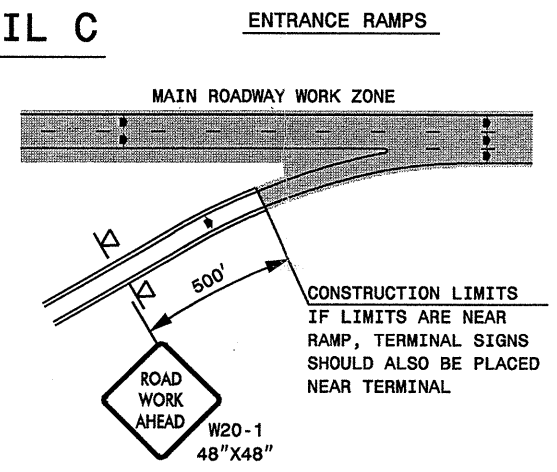
ROADWAYS INTERSECTING ALONG FREEWAY WORK ZONE (Y-LINES)

DETAIL B

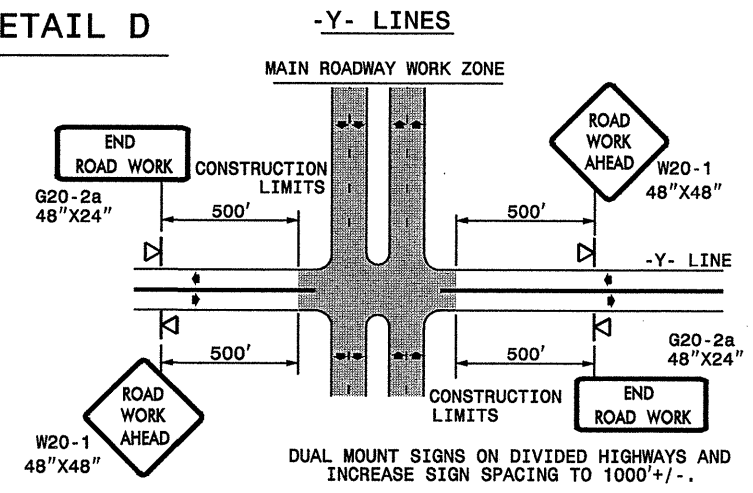


NOTE:
SIGN NOT REQUIRED IF ADVANCE WARNING SIGNS HAVE BEEN PLACED ALONG -Y- LINE THAT RAMP INTERSECTS. IF CONSTRUCTION LIMITS ARE AT END OF RAMP, PLACE SIGN AT END OF RAMP.

DETAIL C



DETAIL D



**DETAIL DRAWING
FOR FREEWAYS
WORK ZONE WARNING SIGNS
(SHORT-DURATION LANE CLOSURES)**

GENERAL NOTES


- USE FLUORESCENT ORANGE SHEETING (TYPE VII OR HIGHER) ON ALL ADVANCED WORK ZONE SIGNS.
- DO NOT INSTALL ADVANCE WARNING SIGNS MORE THAN 3 DAYS PRIOR TO BEGINNING OF WORK.
- ALL SIGN SPACING DIMENSIONS ARE APPROXIMATE, FIELD ADJUST AS NECESSARY OR AS DIRECTED.
- USE PORTABLE WORK ZONE SIGNS ONLY WITH PORTABLE WORK ZONE SIGN STANDS SPECIFICALLY DESIGNED FOR ONE ANOTHER. PORTABLE WORK ZONE SIGNS MAY BE ROLL UP OR APPROVED COMPOSITE.
- PROVIDE PORTABLE WORK ZONE SIGN STANDS, PORTABLE SIGNS AND SIGN SHEETING WHICH ARE LISTED ON THE NORTH CAROLINA DEPARTMENT OF TRANSPORTATION'S APPROVED PRODUCT LIST OR ACCEPTED AS TRAFFIC QUALIFIED BY THE TRAFFIC CONTROL UNIT.
- ** TWO-WAY UNDIVIDED ADVANCE WARNING SIGN CONFIGURATION MAY BE USED ON MULTI-LANE FACILITIES WHERE CONDITIONS LIMIT THE USE OF DUAL MOUNTED SIGNS AS DETERMINED BY THE ENGINEER.

LEGEND

◀ PORTABLE SIGN

➡ DIRECTION OF TRAFFIC FLOW

SHEET 1 OF 1

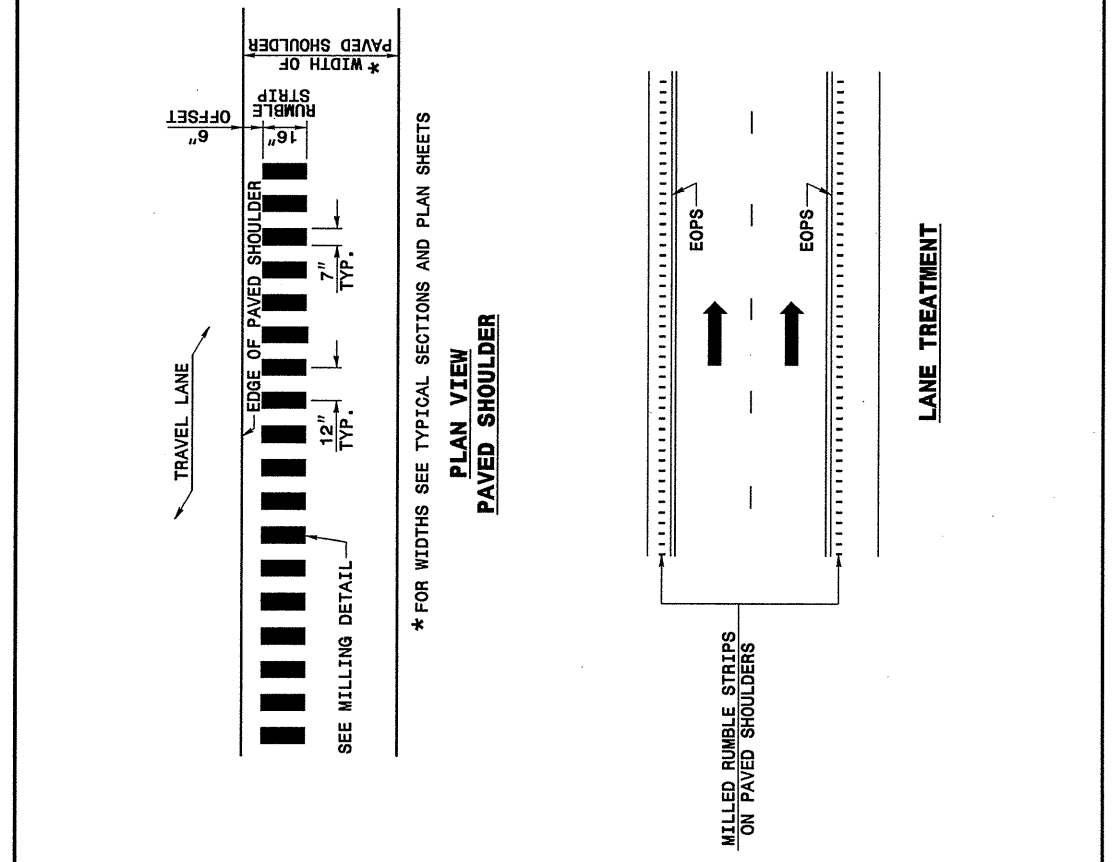
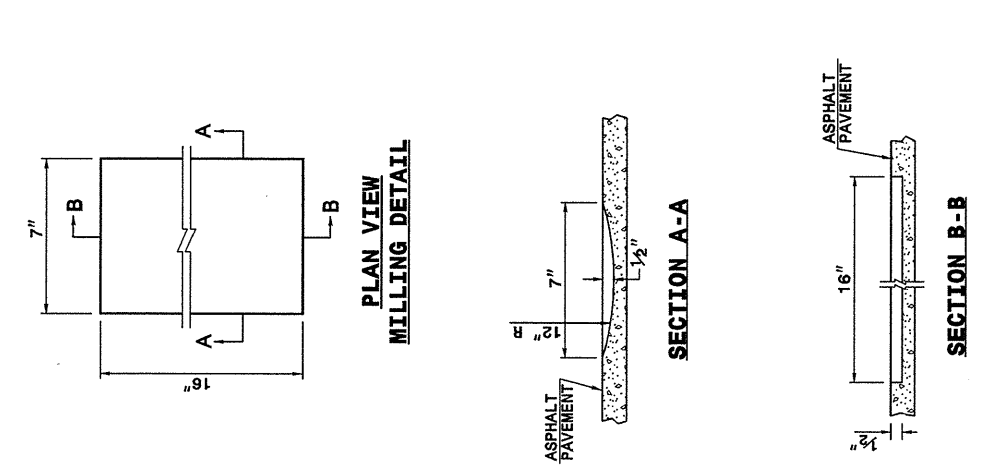
APPROVED: _____	DATE: _____	DETAIL DRAWING FOR FREEWAYS WORK ZONE WARNING SIGNS	
SEAL	SCALE: NONE		
	DATE: _____		
	DWG. BY: _____		
	DESIGN BY: _____		
REVIEWED BY: _____	REVISIONS	7-98	10/01
		10-98	03/04
		01/01	11/04

30-MAR-2006 11:59 AM \\DOT\DFSR001\GROUPS-WZ\TCCC\design\group4\resurfacing\div13\387373\uncombel-4726\387373\free4lanes\creatrev05.dgn pseymore AT WZTC206427

STATE OF NORTH CAROLINA
DEPT. OF TRANSPORTATION
DIVISION OF HIGHWAYS
RALEIGH, N.C.

ENGLISH DETAIL DRAWING FOR
**ASPHALT SHOULDERS
MILLED RUMBLE STRIPS**

SHEET 1 OF 2
665D01



STATE OF NORTH CAROLINA
DEPT. OF TRANSPORTATION
DIVISION OF HIGHWAYS
RALEIGH, N.C.

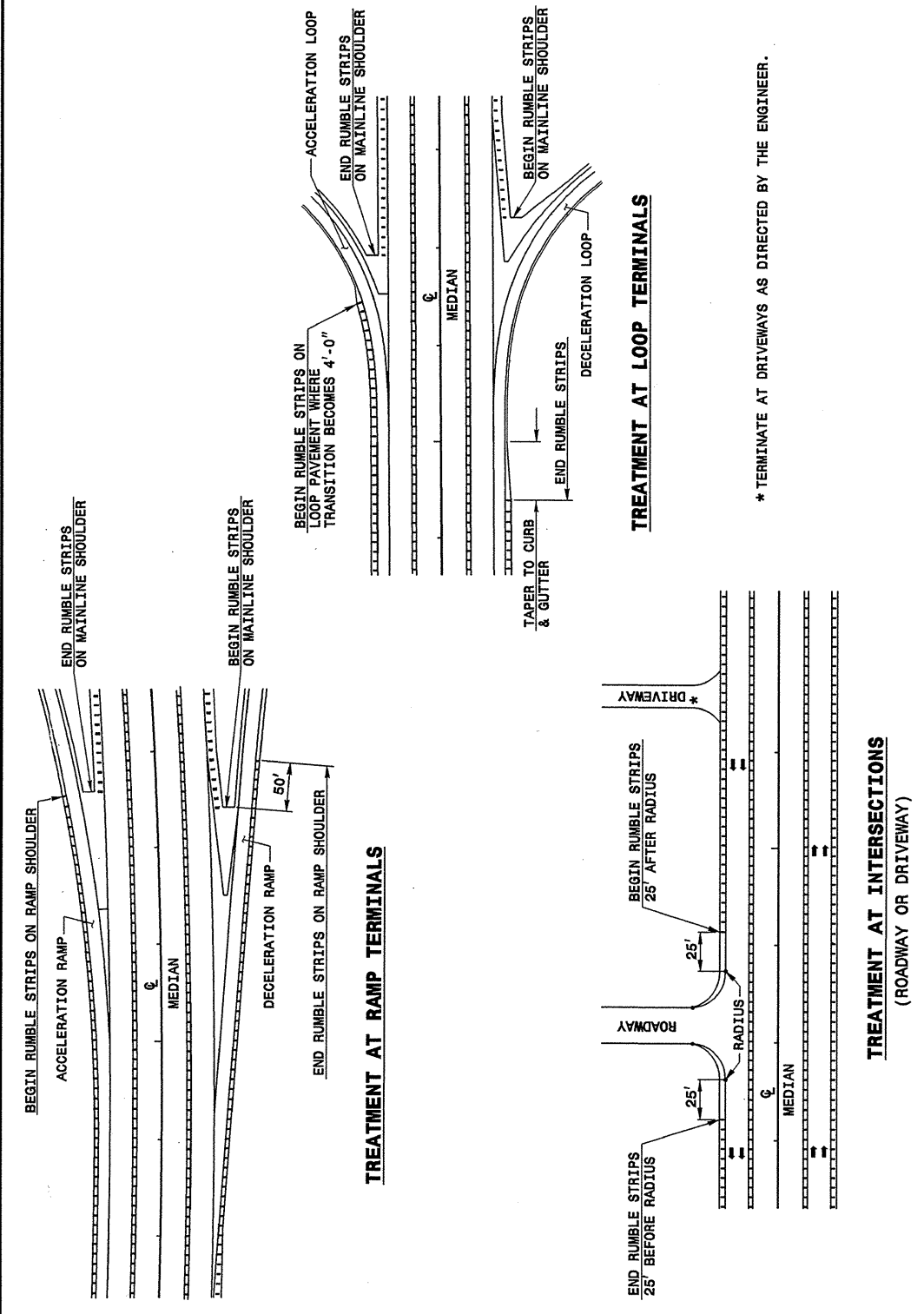
ENGLISH DETAIL DRAWING FOR
**ASPHALT SHOULDERS
MILLED RUMBLE STRIPS**

SHEET 1 OF 2
665D01

STATE OF NORTH CAROLINA
DEPT. OF TRANSPORTATION
DIVISION OF HIGHWAYS
RALEIGH, N.C.

ENGLISH DETAIL DRAWING FOR
**ASPHALT SHOULDERS
MILLED RUMBLE STRIPS**

SHEET 2 OF 2
665D01



STATE OF NORTH CAROLINA
DEPT. OF TRANSPORTATION
DIVISION OF HIGHWAYS
RALEIGH, N.C.

ENGLISH DETAIL DRAWING FOR
**ASPHALT SHOULDERS
MILLED RUMBLE STRIPS**

SHEET 2 OF 2
665D01

PROJECT SERVICES UNIT
STANDARDS AND SPECIAL DESIGN
Office 919-250-4128 FAX 919-250-4119

SEE PLATE FOR TITLE

ORIGINAL BY: 2002 STANDARDS DATE: 01-15-02
MODIFIED BY: E.E. WARD DATE: 09-16-04
CHECKED BY: DATE:
FILE SPEC.: stds/02stdstodetails/english/665d01.dgn

28-OCT-2004 10:41 AM \\sers\ward\stds\02\stds to Special Details/english\665d01\0665d01.dgn
en15enr1d