

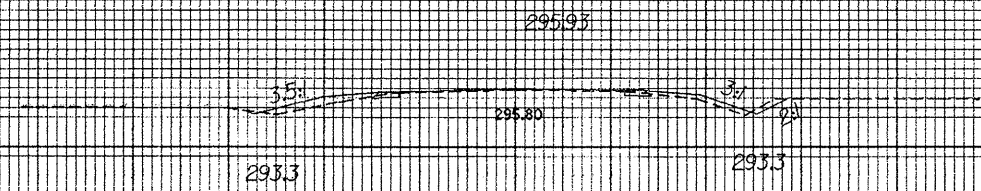
8/22/99



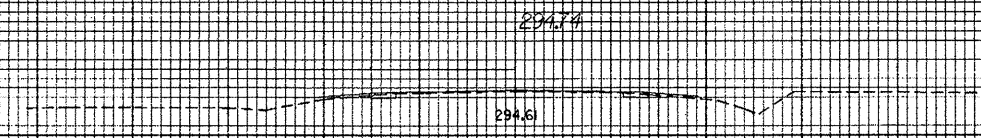
PROJ. REFERENCE NO.
37983

SHEET NO.
X-1

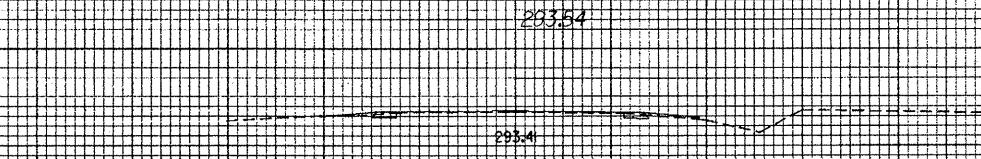
150 140 130 120 110 100 90 80 70 60 50 40 30 20 10 0 10 20 30 40 50 60 70 80 90 100 110 120 130 140 150



11+00.00



10+50.00



10+00.00

290

290

150 140 130 120 110 100 90 80 70 60 50 40 30 20 10 0 10 20 30 40 50 60 70 80 90 100 110 120 130 140 150

M:\AN\2005\08\48
D:\DC\PROJ\37983 NC210_SRI\3\FILES\GNV\sect\2.xol.dgn
cherer

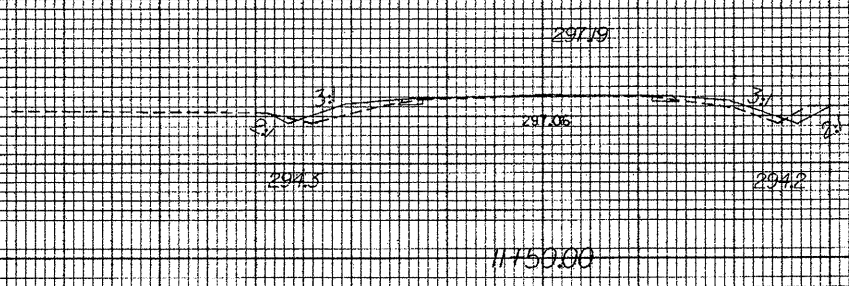
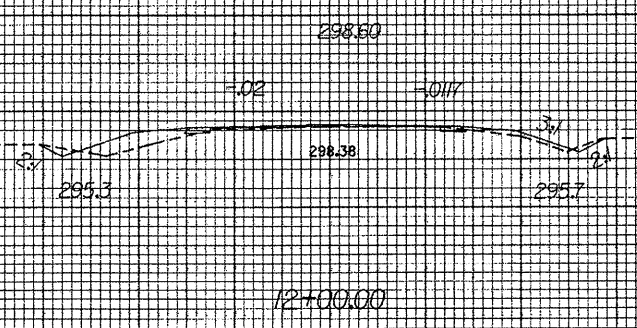
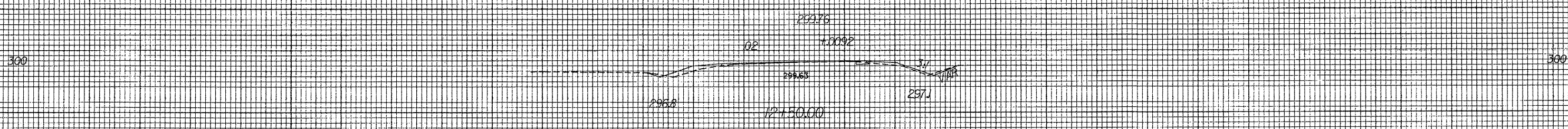
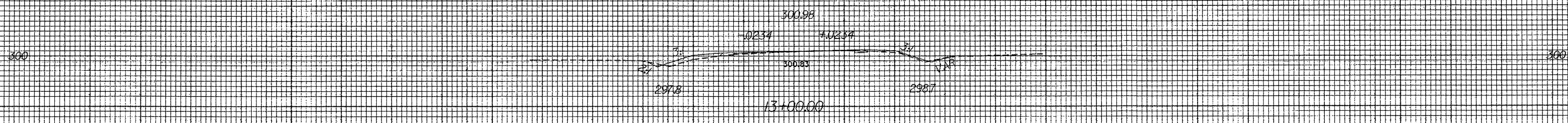
8/23/99

0 10

PROJ. REFERENCE NO.
37983

SHEET NO.
X-2

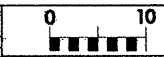
150 140 130 120 110 100 90 80 70 60 50 40 30 20 10 0 10 20 30 40 50 60 70 80 90 100 110 120 130 140 150



150 140 130 120 110 100 90 80 70 60 50 40 30 20 10 0 10 20 30 40 50 60 70 80 90 100 110 120 130 140 150

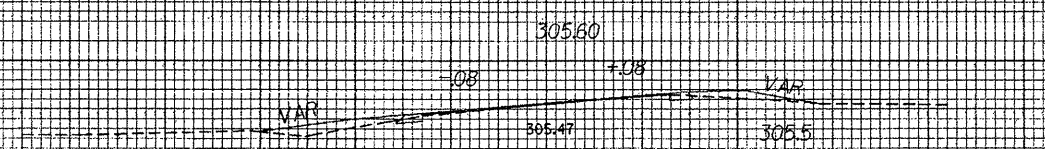
14-JAN-2005 08:48
D:\000PRJ\JECT\FILES\37983 NC210_SRIE13\DESIGN\sect\2_xoi.egn
cherner AT DCCAD221483

8/23/99

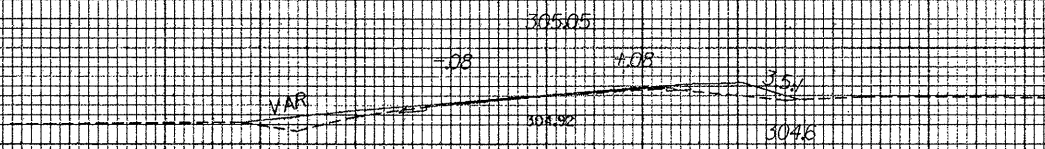


PROJ. REFERENCE NO. 37983 SHEET NO. X-3

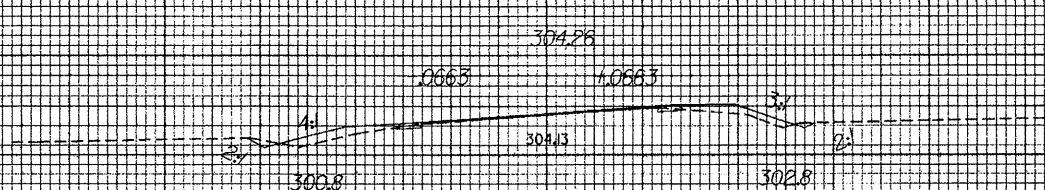
150 140 130 120 110 100 90 80 70 60 50 40 30 20 10 0 10 20 30 40 50 60 70 80 90 100 110 120 130 140 150



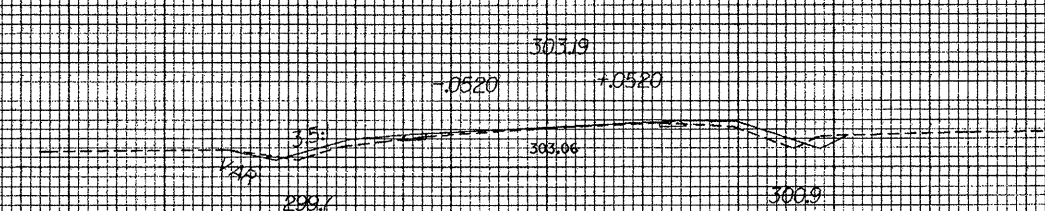
15+50.00



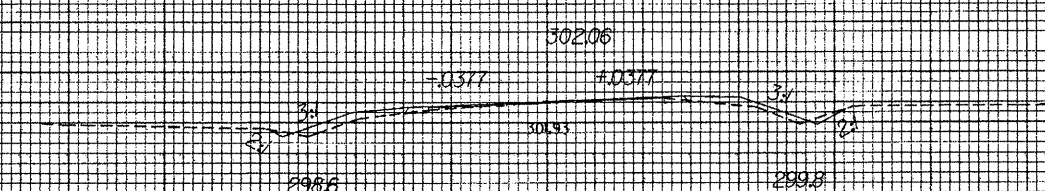
15+00.00



14+50.00



14+00.00



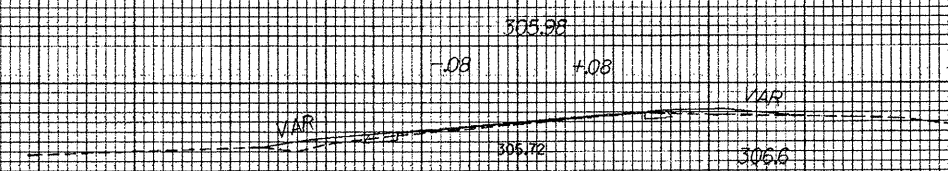
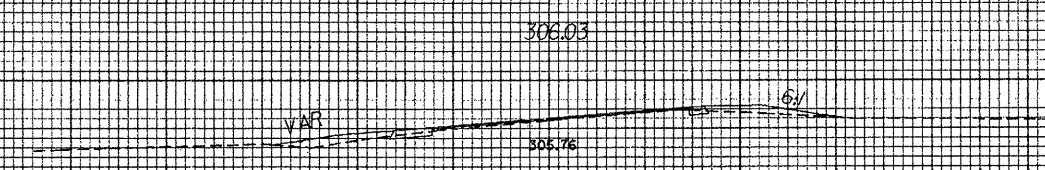
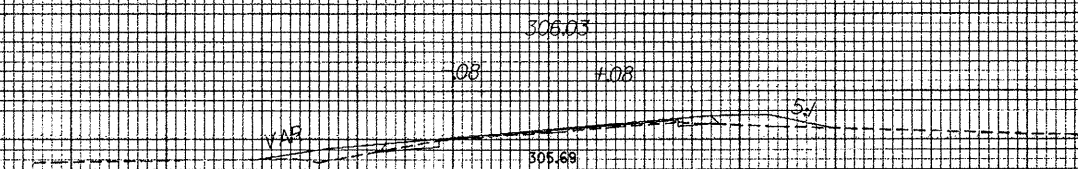
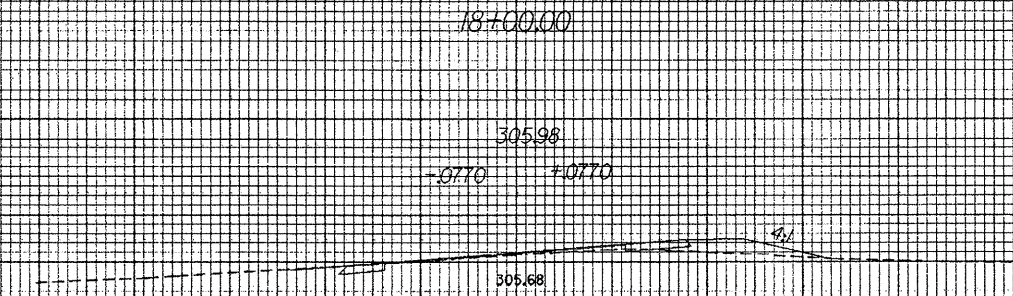
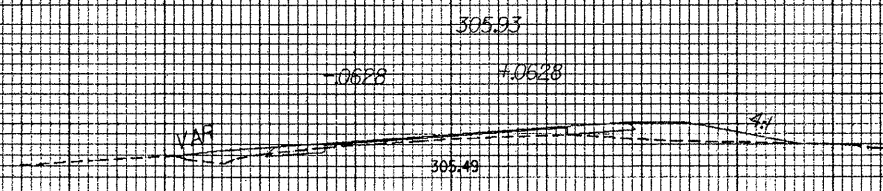
13+50.00

150 140 130 120 110 100 90 80 70 60 50 40 30 20 10 0 10 20 30 40 50 60 70 80 90 100 110 120 130 140 150

I:\AN-2005-0848 C:\DOC-PROJ\FILES\37983 NC210_SRI513\DESIGN\sect\2_xpl.dgn

8/23/99

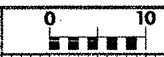
150 140 130 120 110 100 90 80 70 60 50 40 30 20 10 0 10 20 30 40 50 60 70 80 90 100 110 120 130 140 150



150 140 130 120 110 100 90 80 70 60 50 40 30 20 10 0 10 20 30 40 50 60 70 80 90 100 110 120 130 140 150

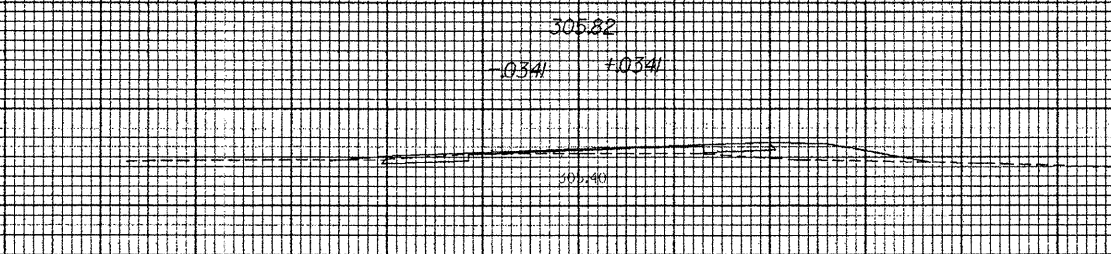
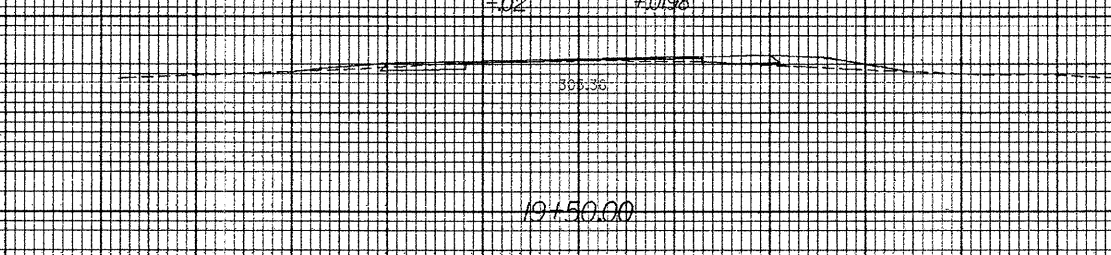
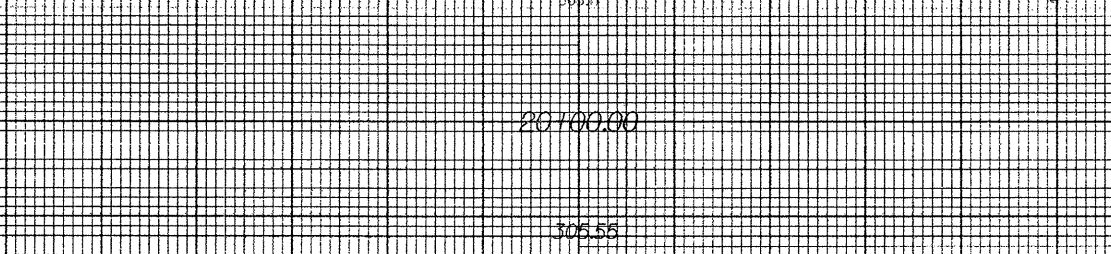
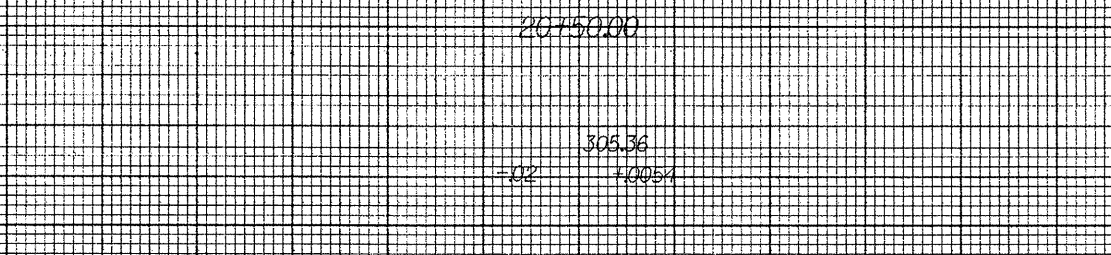
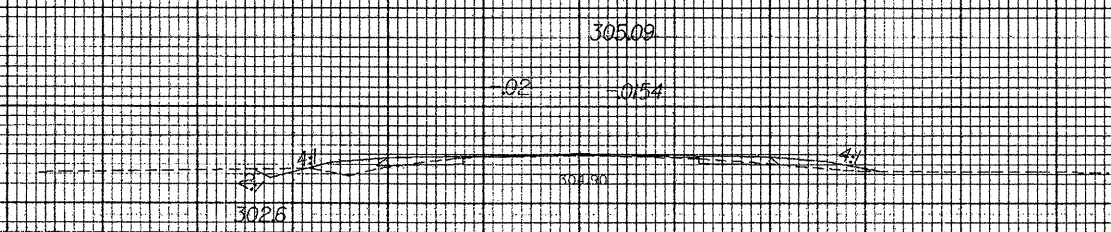
I:\11-2006\08-48\110066\11-2006\DESIGN\sect12.xpcgn
 21

8/23/98



PROJ. REFERENCE NO.	SHEET NO.
37983	X-5

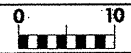
150 140 130 120 110 100 90 80 70 60 50 40 30 20 10 0 10 20 30 40 50 60 70 80 90 100 110 120 130 140 150



150 140 130 120 110 100 90 80 70 60 50 40 30 20 10 0 10 20 30 40 50 60 70 80 90 100 110 120 130 140 150

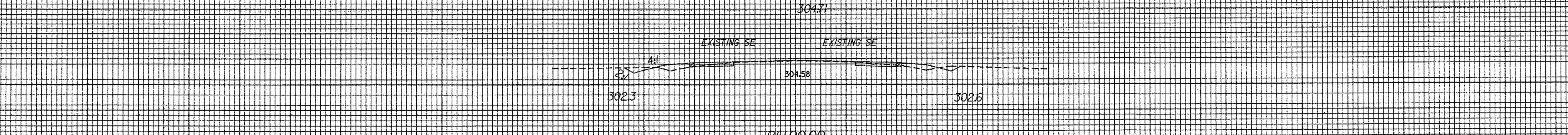
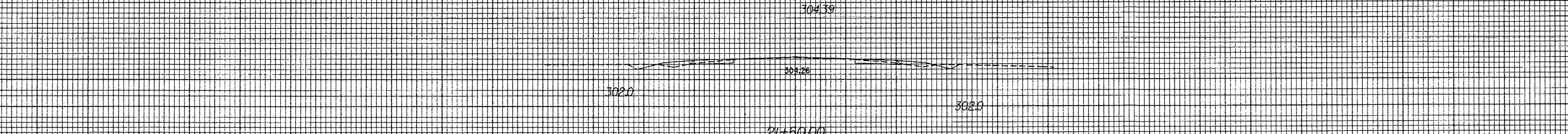
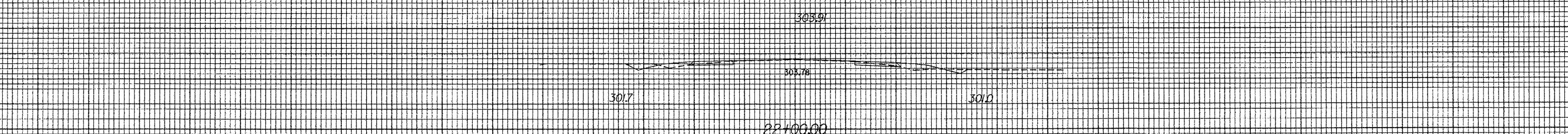
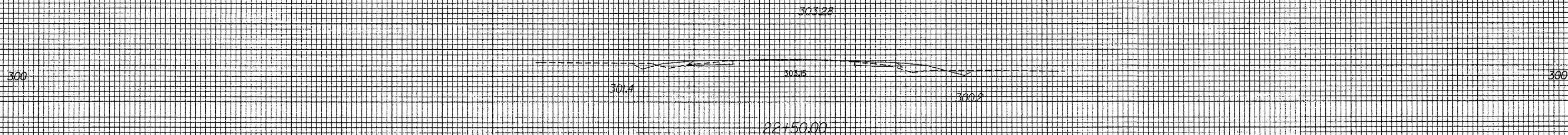
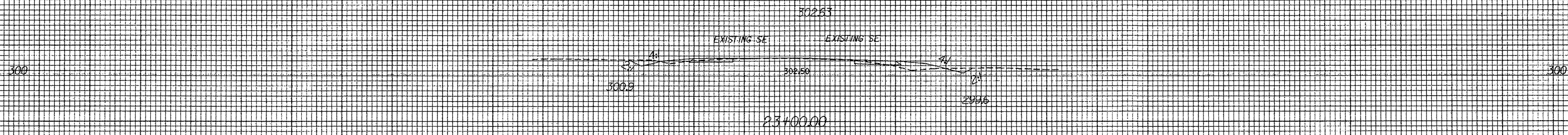
 SYSTEMS

8/23/99



PROJ. REFERENCE NO. 37983 SHEET NO. X-6

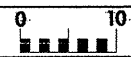
150 140 130 120 110 100 90 80 70 60 50 40 30 20 10 0 10 20 30 40 50 60 70 80 90 100 110 120 130 140 150



150 140 130 120 110 100 90 80 70 60 50 40 30 20 10 0 10 20 30 40 50 60 70 80 90 100 110 120 130 140 150

K:\JAN-2005\08148 D:\000\PROJECT FILES\37983 NC210_SRI513\DESIGN\sect\2_xai.cgm ch3mer AT DBCAD21483

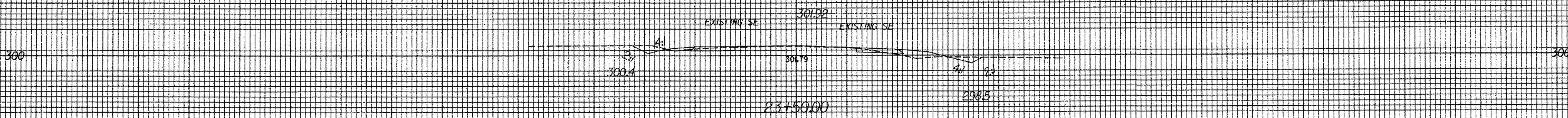
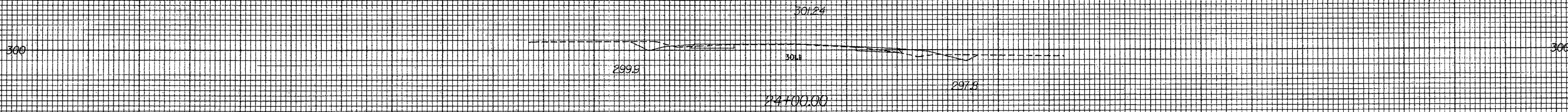
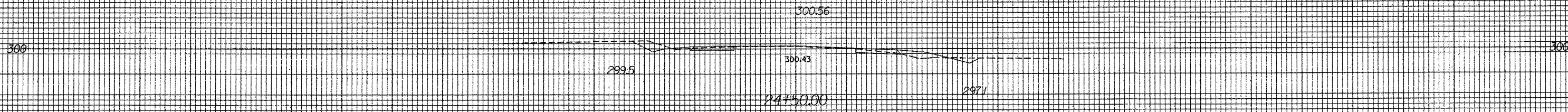
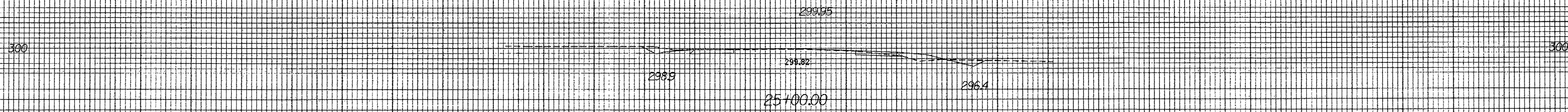
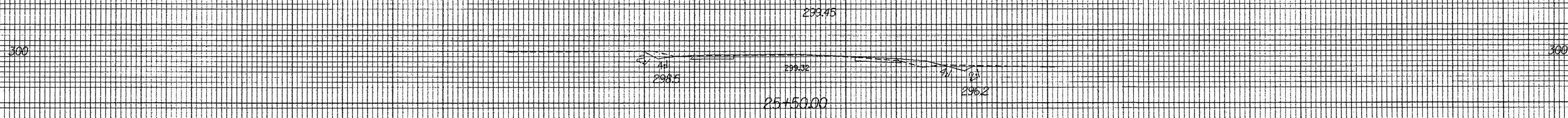
8/23/99



PROJ. REFERENCE NO.
37983

SHEET NO.
X-7

150 140 130 120 110 100 90 80 70 60 50 40 30 20 10 0 10 20 30 40 50 60 70 80 90 100 110 120 130 140 150

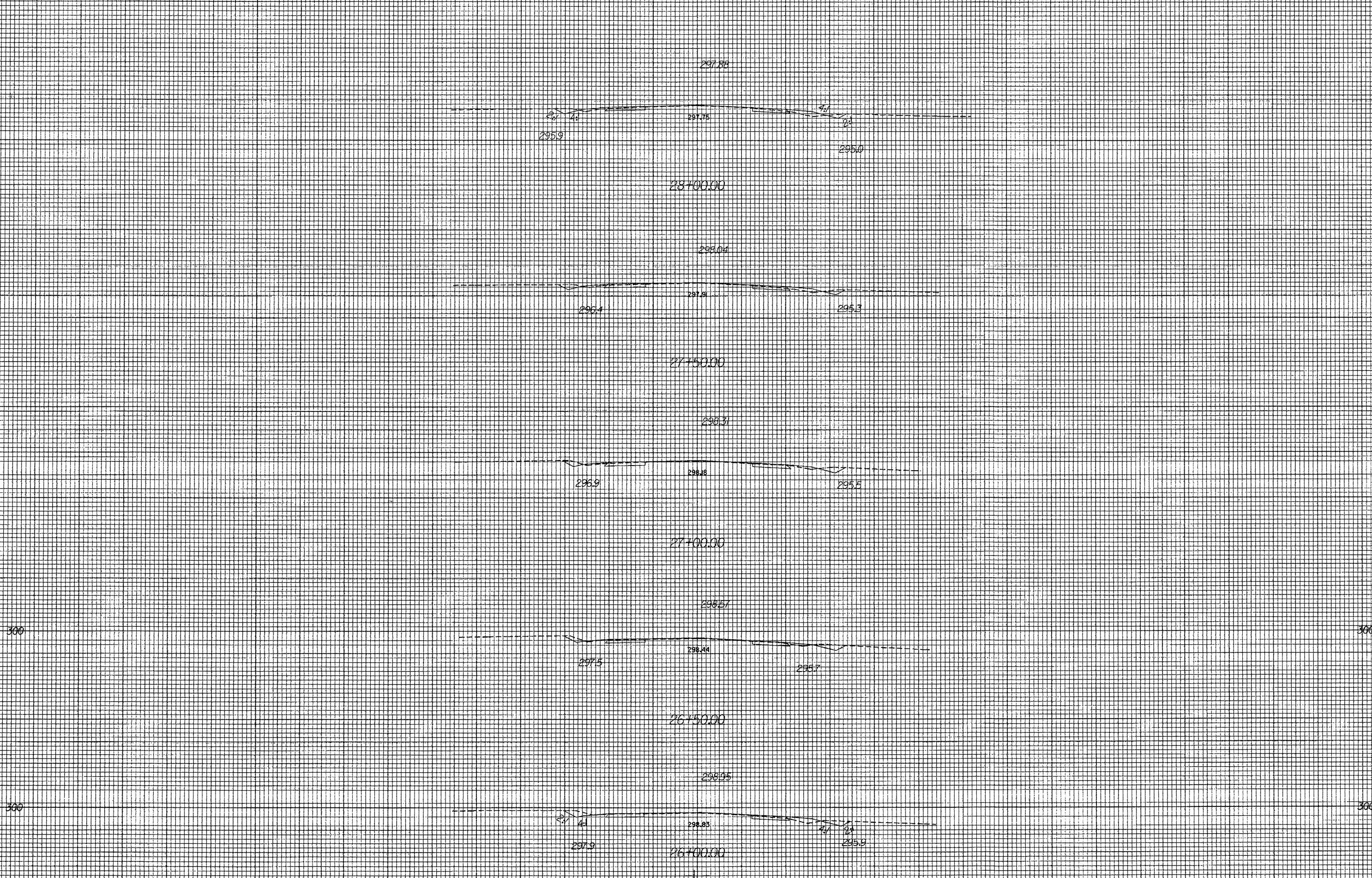


150 140 130 120 110 100 90 80 70 60 50 40 30 20 10 0 10 20 30 40 50 60 70 80 90 100 110 120 130 140 150

14-MAY-2005 08:48 D:\JDC\PROJ\37983\NC210_SRI5.3\DESIGN\sec-12.dgn

8/23/99

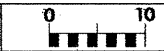
150 140 130 120 110 100 90 80 70 60 50 40 30 20 10 0 10 20 30 40 50 60 70 80 90 100 110 120 130 140 150



150 140 130 120 110 100 90 80 70 60 50 40 30 20 10 0 10 20 30 40 50 60 70 80 90 100 110 120 130 140 150

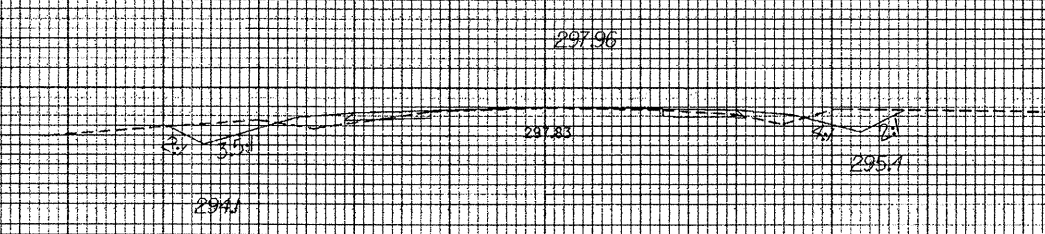
14-1A-V-2026 08-48
D:\DCC\PC\FCT\FIL\ES\37983 NC210_SRI513\CESIG\N\sect\2_xj.cgn
At D:\DCC\PC\FCT\FIL\ES\37983 NC210_SRI513\CESIG\N\sect\2_xj.cgn
chbrner

B/23/99

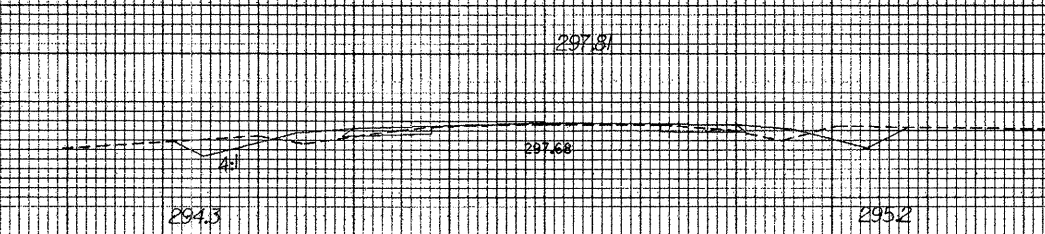


PROJ. REFERENCE NO. 37983
SHEET NO. X-9

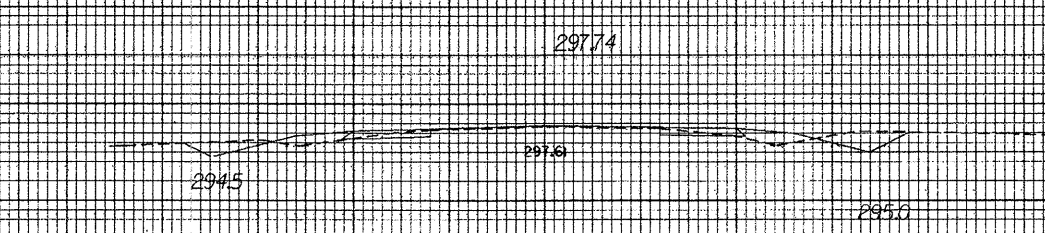
150 140 130 120 110 100 90 80 70 60 50 40 30 20 10 0 10 20 30 40 50 60 70 80 90 100 110 120 130 140 150



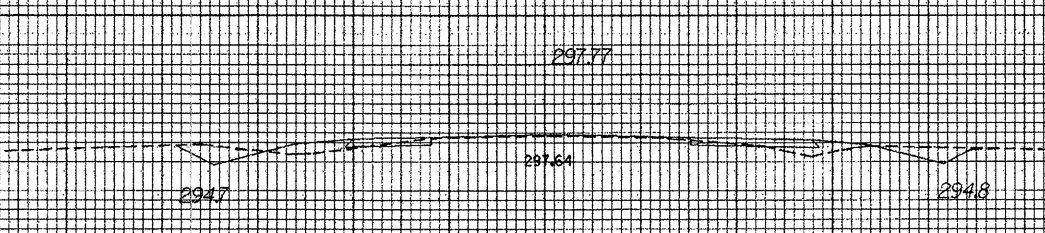
30+50.00



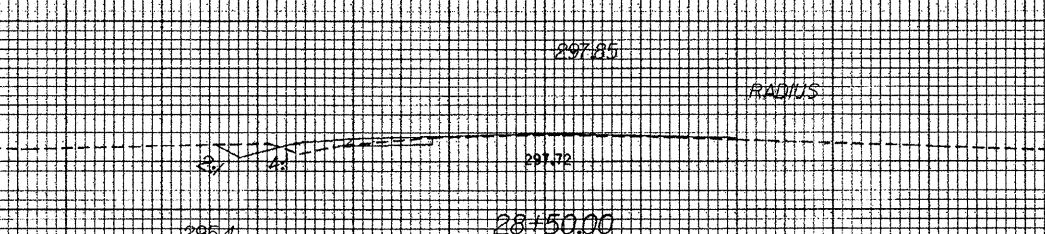
30+100.00



29+50.00



29+100.00

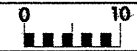


28+50.00

150 140 130 120 110 100 90 80 70 60 50 40 30 20 10 0 10 20 30 40 50 60 70 80 90 100 110 120 130 140 150

K:\A1-2005_C8-48
D:\DCC\ARC\FCI-1\ES\37983 NC210_SR.E13\DESIGN\sect.2.kj.rgn
corner A DCA221483

9/23/99



PROJ. REFERENCE NO.
37983

SHEET NO.
X-10

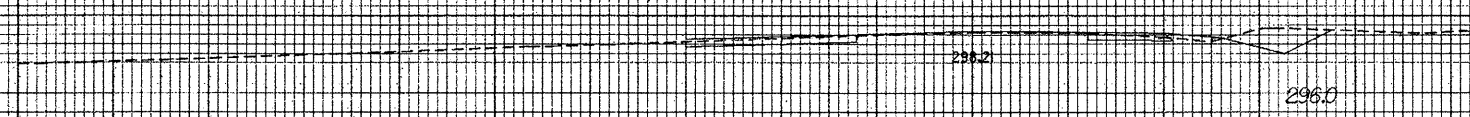
150 140 130 120 110 100 90 80 70 60 50 40 30 20 10 0 10 20 30 40 50 60 70 80 90 100 110 120 130 140 150

298.36



33400.00

298.34



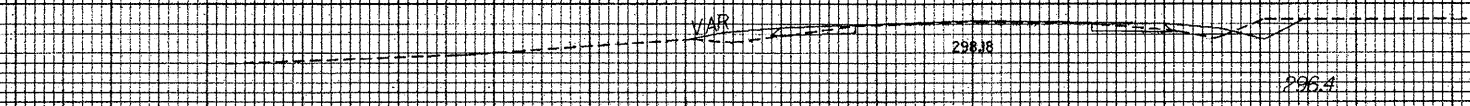
32450.00

298.31



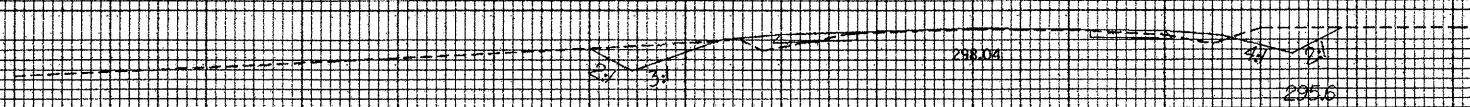
32400.00

298.31



31450.00

298.17



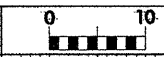
31400.00

298.04

150 140 130 120 110 100 90 80 70 60 50 40 30 20 10 0 10 20 30 40 50 60 70 80 90 100 110 120 130 140 150

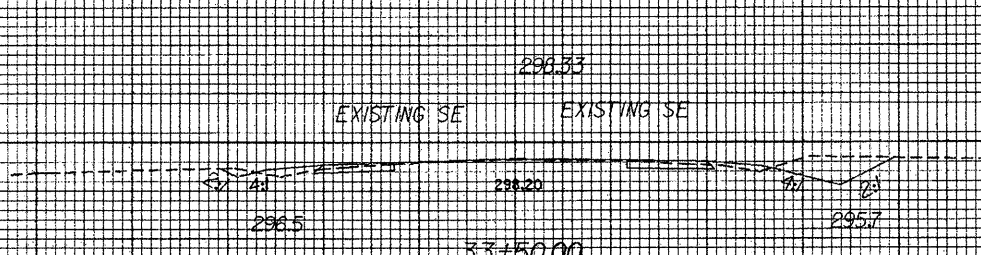
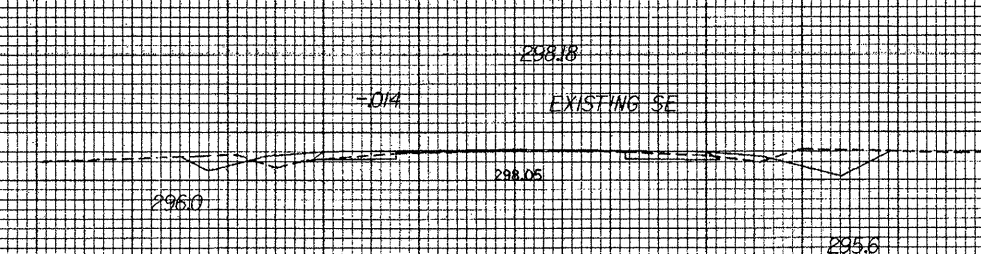
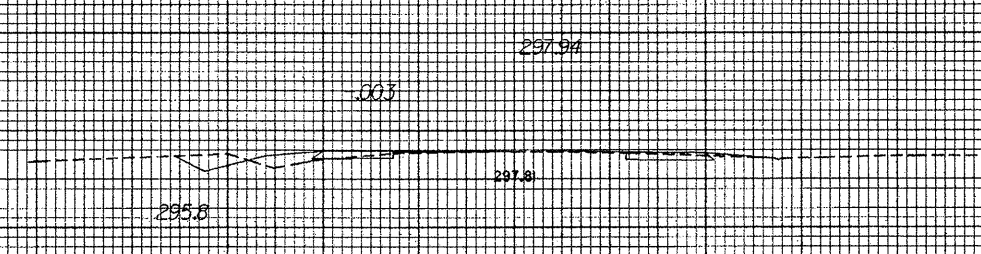
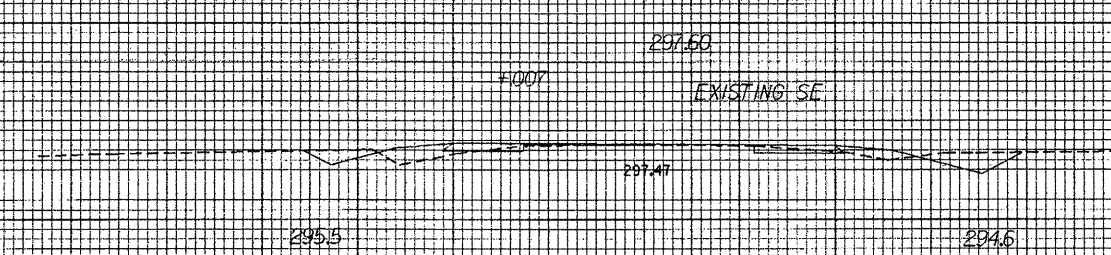
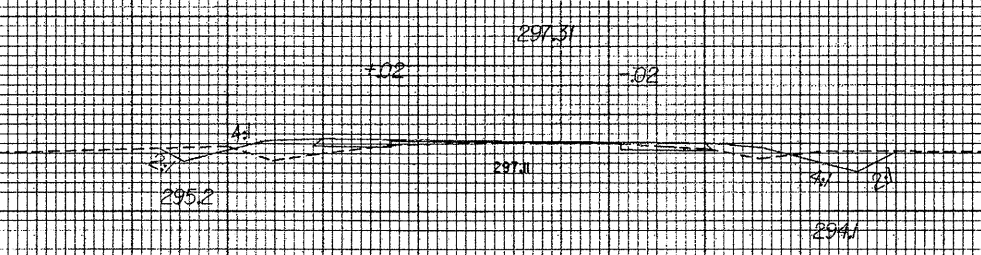
14-JAN-2005 08:48
D:\DOPRO\F\TE\FES\37983 NC210_SRI53\UES\GNV\sect\2.x01.dgn
charrier

8/23/99



PROJ. REFERENCE NO. 37983 SHEET NO. X-11

150 140 130 120 110 100 90 80 70 60 50 40 30 20 10 0 10 20 30 40 50 60 70 80 90 100 110 120 130 140 150



150 140 130 120 110 100 90 80 70 60 50 40 30 20 10 0 10 20 30 40 50 60 70 80 90 100 110 120 130 140 150

I:\AN-2005_0848\PROJECT\FILES\37983_NC210_SR1513\DESIGN\sect2.xsl.cgn

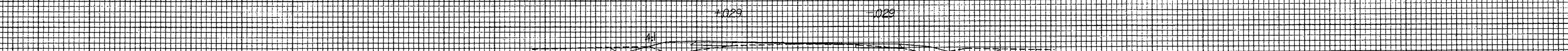
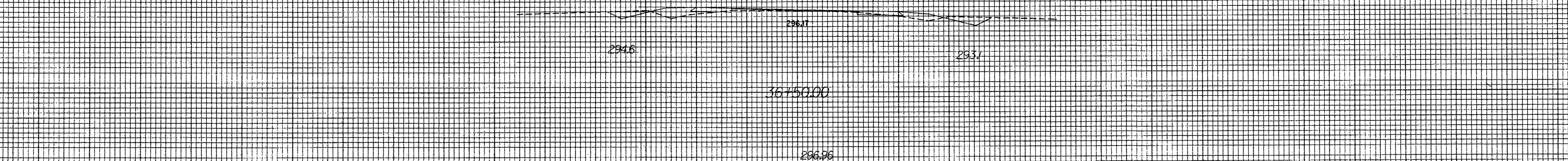
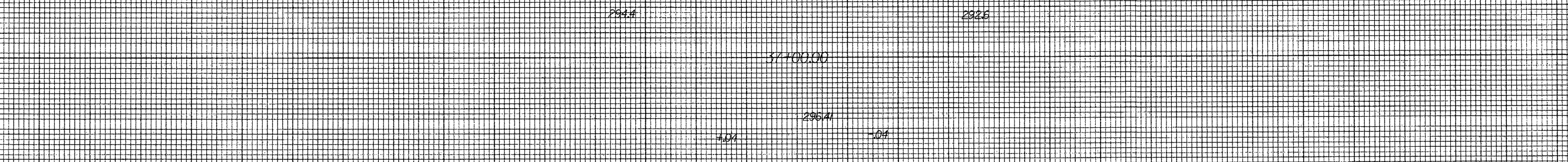
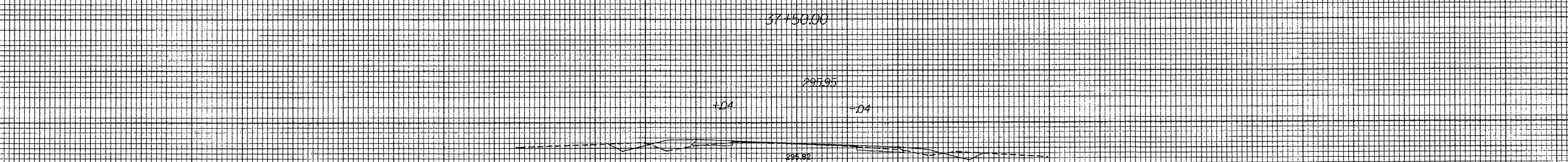
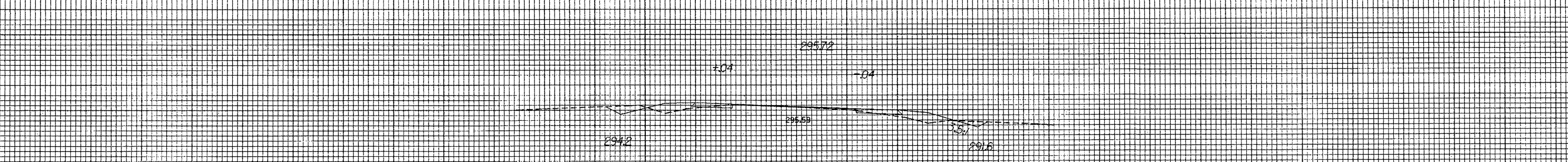
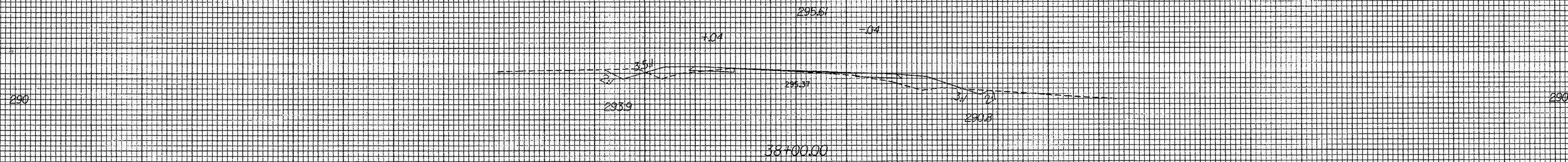
8/23/99

0 10

PROJ. REFERENCE NO.
37983

SHEET NO.
X-12

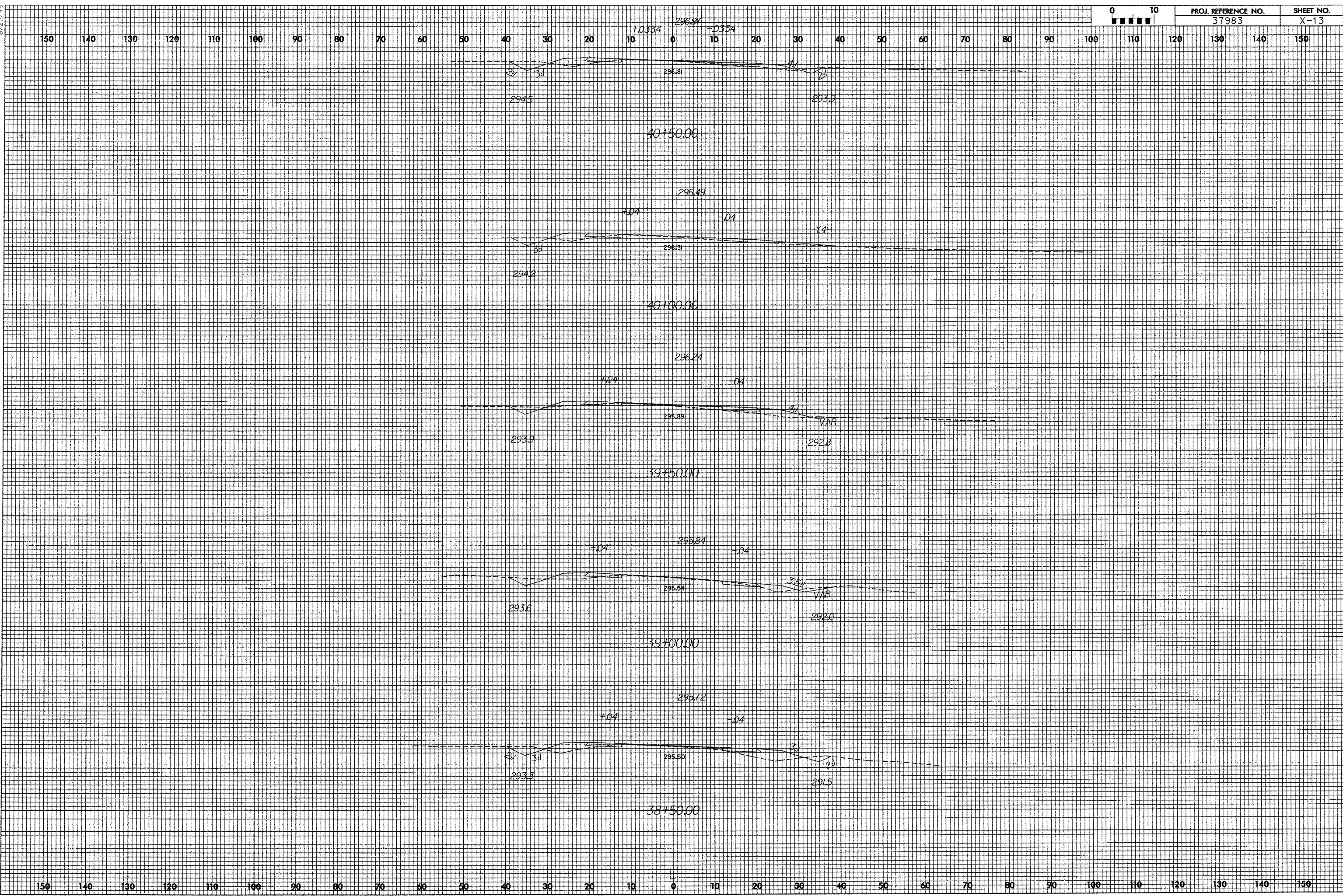
150 140 130 120 110 100 90 80 70 60 50 40 30 20 10 0 10 20 30 40 50 60 70 80 90 100 110 120 130 140 150



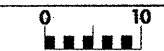
150 140 130 120 110 100 90 80 70 60 50 40 30 20 10 0 10 20 30 40 50 60 70 80 90 100 110 120 130 140 150

H:\AN-2005\08468\01\00\PROJ\AT\DISCAD22_183 NC210_SRI513\DESIGN\sect\2_xpl.dgn

8/23/99
12-JAN-2005 09:48
D:\DDP\PC\JFC\1155\37983 NC210_SR\513\DESIGN\sect\2_xo.cgm
corner A 36VA221483

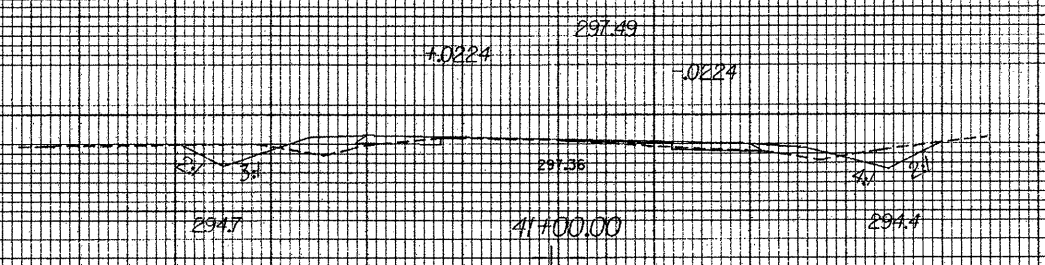
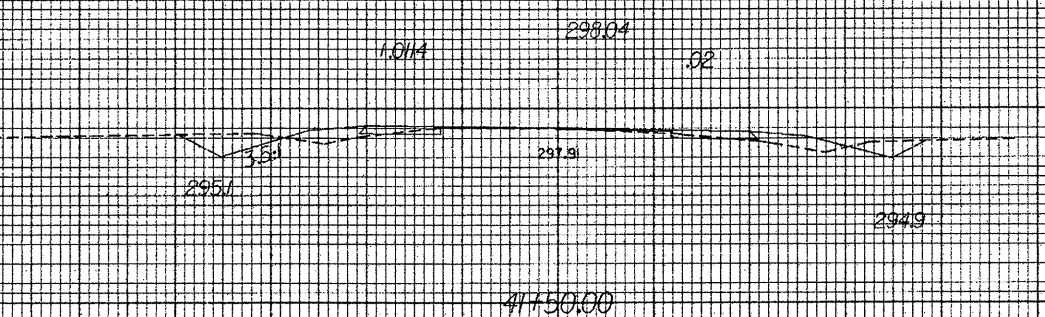
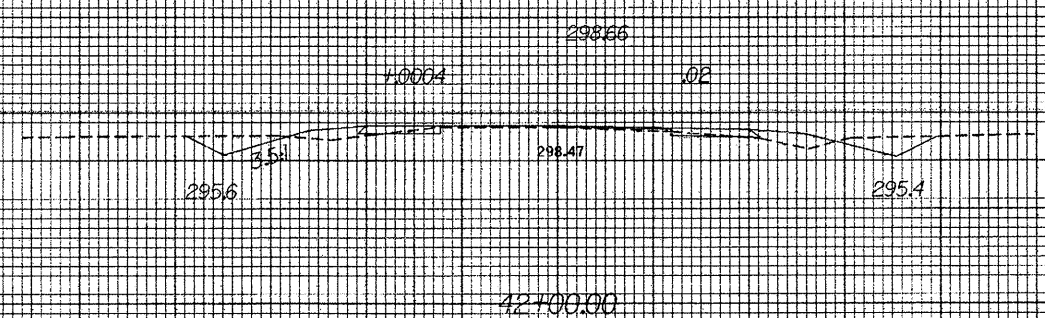
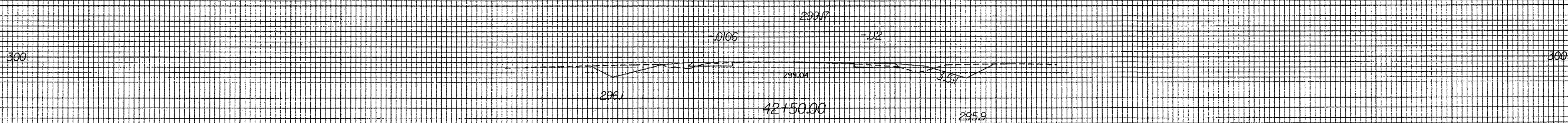
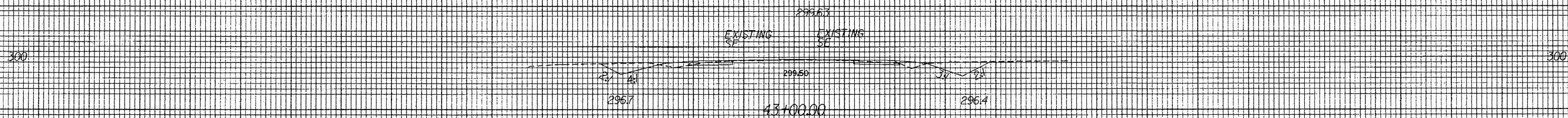


8/23/99



PROJ. REFERENCE NO. 37983 SHEET NO. X-14

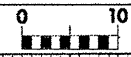
150 140 130 120 110 100 90 80 70 60 50 40 30 20 10 0 10 20 30 40 50 60 70 80 90 100 110 120 130 140 150



150 140 130 120 110 100 90 80 70 60 50 40 30 20 10 0 10 20 30 40 50 60 70 80 90 100 110 120 130 140 150

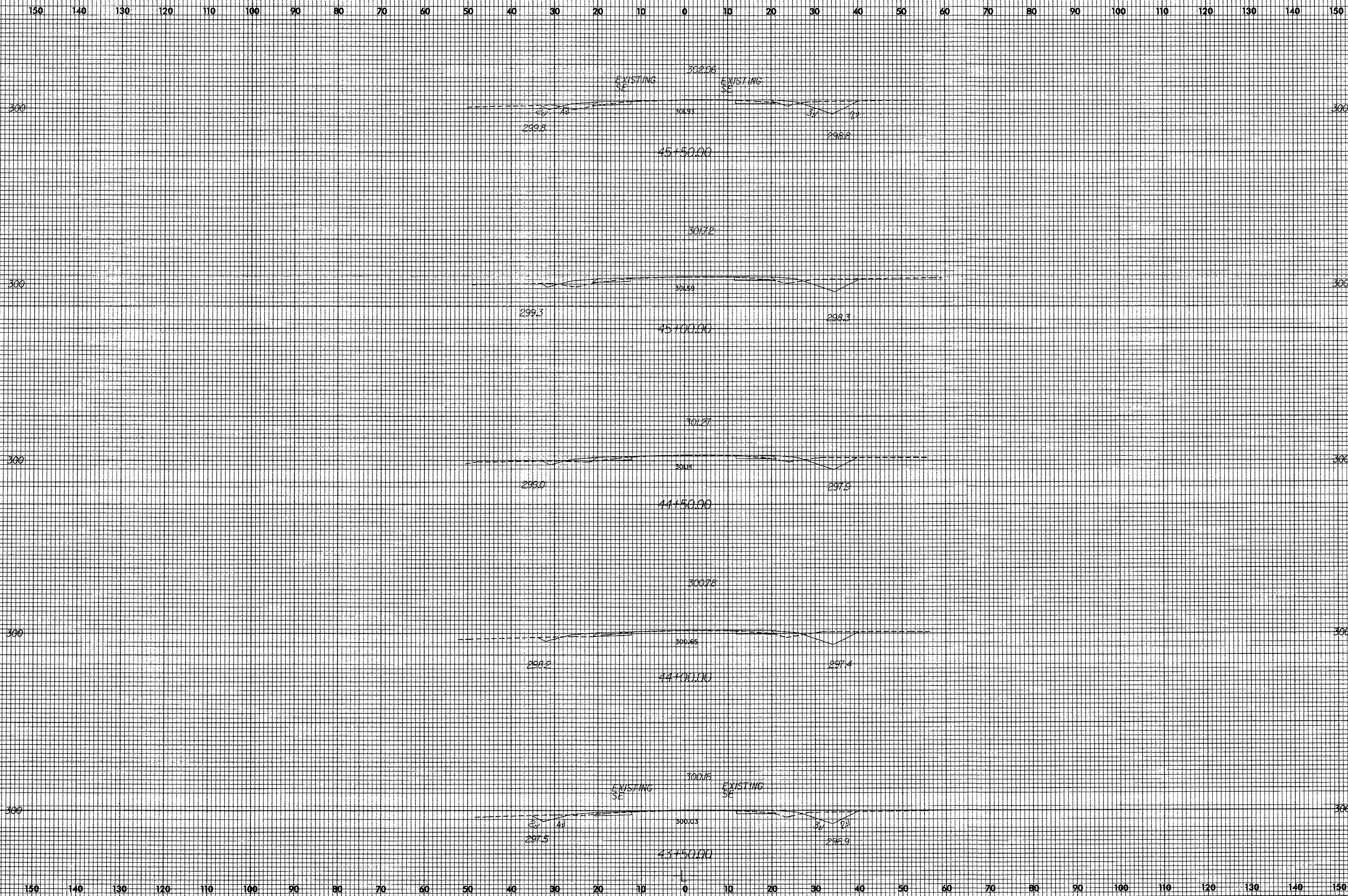
14-JAN-2005 08:48 D:\DOPRO\ET\ES\37983\NC210_SRI5_3\ES\GV\sec\2_xol.dgn

8/22/99



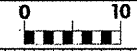
PROJ. REFERENCE NO.
37983

SHEET NO.
X-15



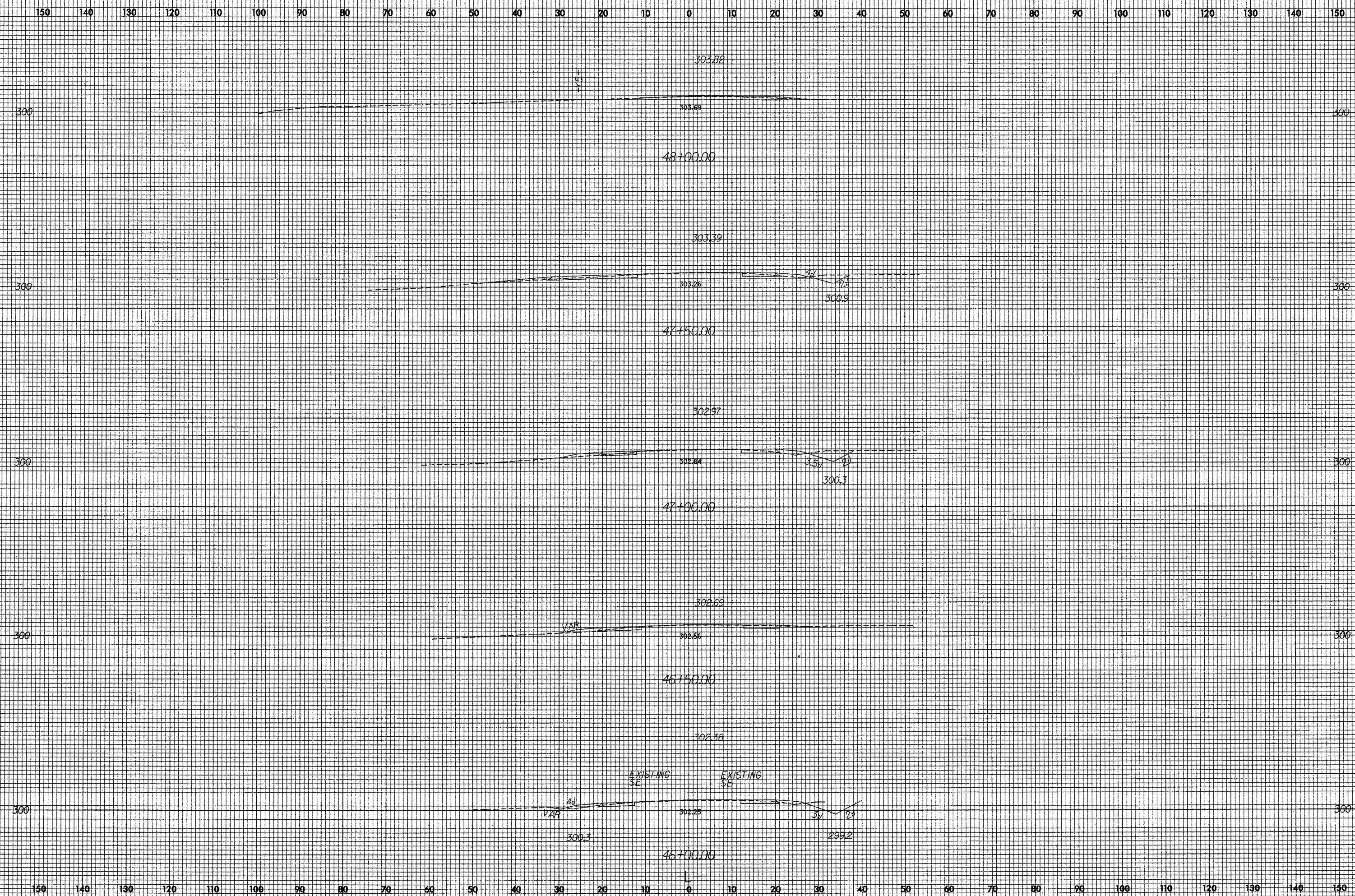
4-JAN-2005 08:48
D:\000582\PROJECT\A1\B6CAD221483
cherner

8/23/99



PROJ. REFERENCE NO.
37983

SHEET NO.
X-16

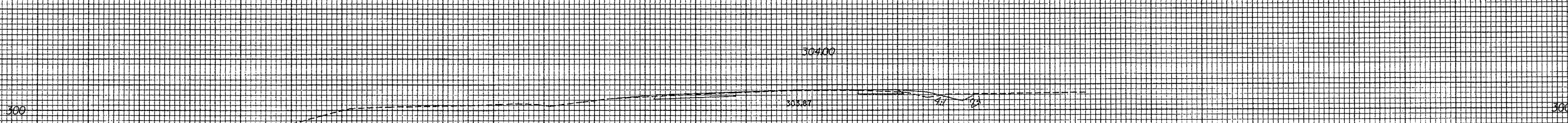
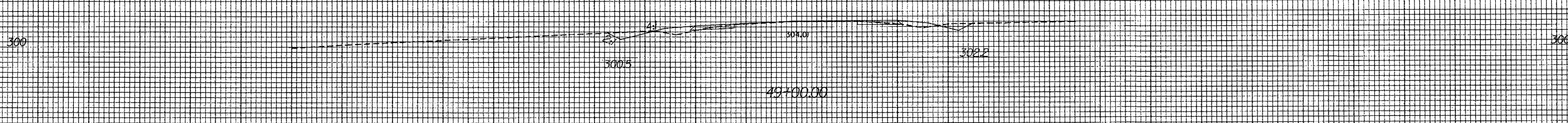
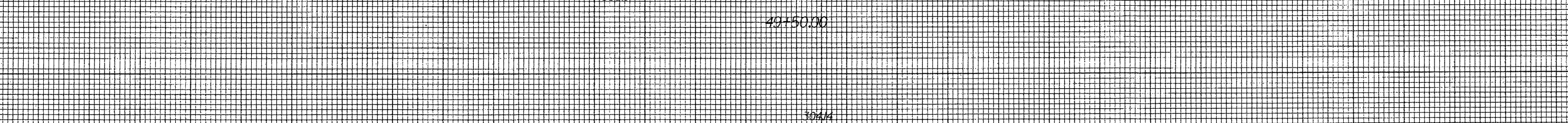
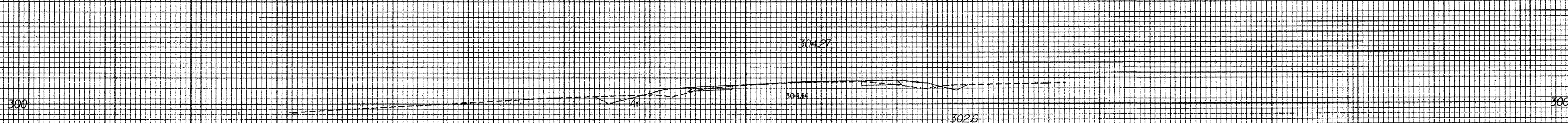
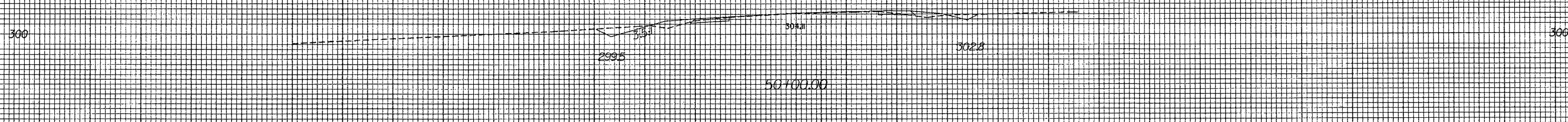
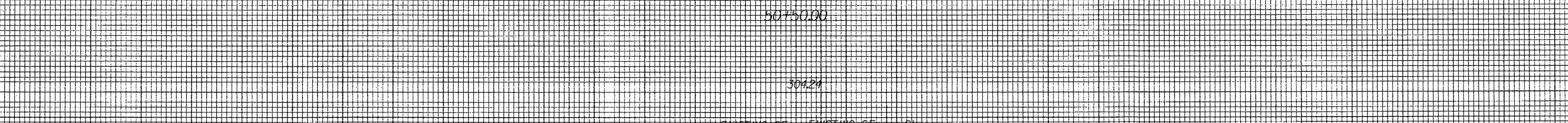
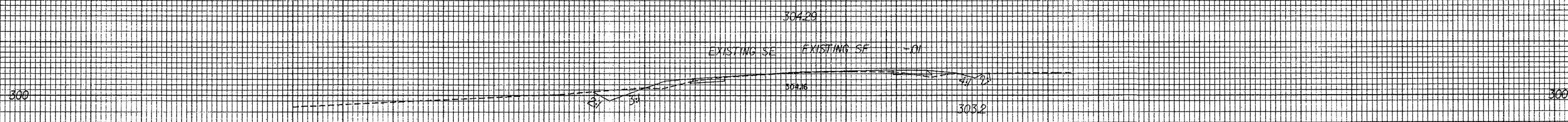


4-14-2005 08:48
D:\VOC\PROJ\37983\DESIGN\sect2_xo1.dgn
charmer

150 140 130 120 110 100 90 80 70 60 50 40 30 20 10 0 10 20 30 40 50 60 70 80 90 100 110 120 130 140 150

8/23/99

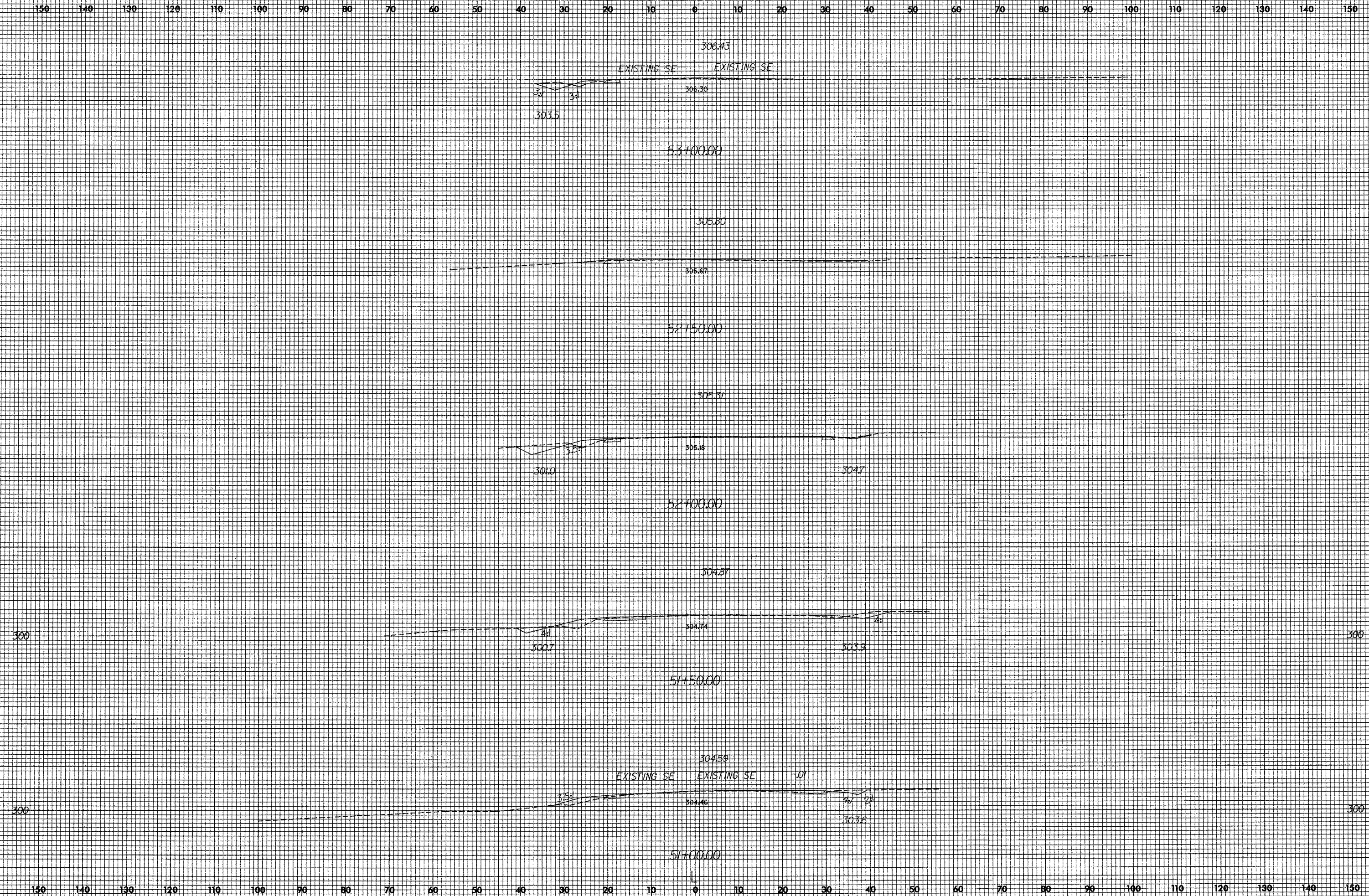
150 140 130 120 110 100 90 80 70 60 50 40 30 20 10 0 10 20 30 40 50 60 70 80 90 100 110 120 130 140 150



150 140 130 120 110 100 90 80 70 60 50 40 30 20 10 0 10 20 30 40 50 60 70 80 90 100 110 120 130 140 150

14-JAN-2005 08:48
 C:\DOC-PROJ\2004\11\ES\37983\NC210_SRI513\DESIGN\sect\2_xpl.dgn
 cherner AT DESAD22.483

8/23/99



14-JAN-2005 08:48 C:\006\PROJECT\FILES\37983\NC210_SRI513\DESIGN\XSECT\2_xpl.dgn

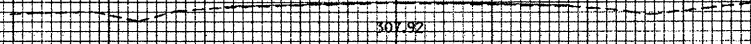
8/23/99



PROJ. REFERENCE NO.
37983

SHEET NO.
X-19

150 140 130 120 110 100 90 80 70 60 50 40 30 20 10 0 10 20 30 40 50 60 70 80 90 100 110 120 130 140 150



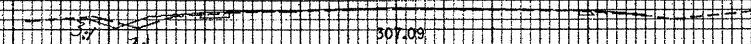
307.92

5.4700.00

307.22

EXISTING SE

EXISTING SE



307.09

305.0

5.3750.00

L

150 140 130 120 110 100 90 80 70 60 50 40 30 20 10 0 10 20 30 40 50 60 70 80 90 100 110 120 130 140 150

M-JAN-2005 08:48
D:\JOC\PROJ\FILES\37983 NC210 SR15\3\DESIGN\Xsect\2.xol.dgn
chorner 8/23/99