

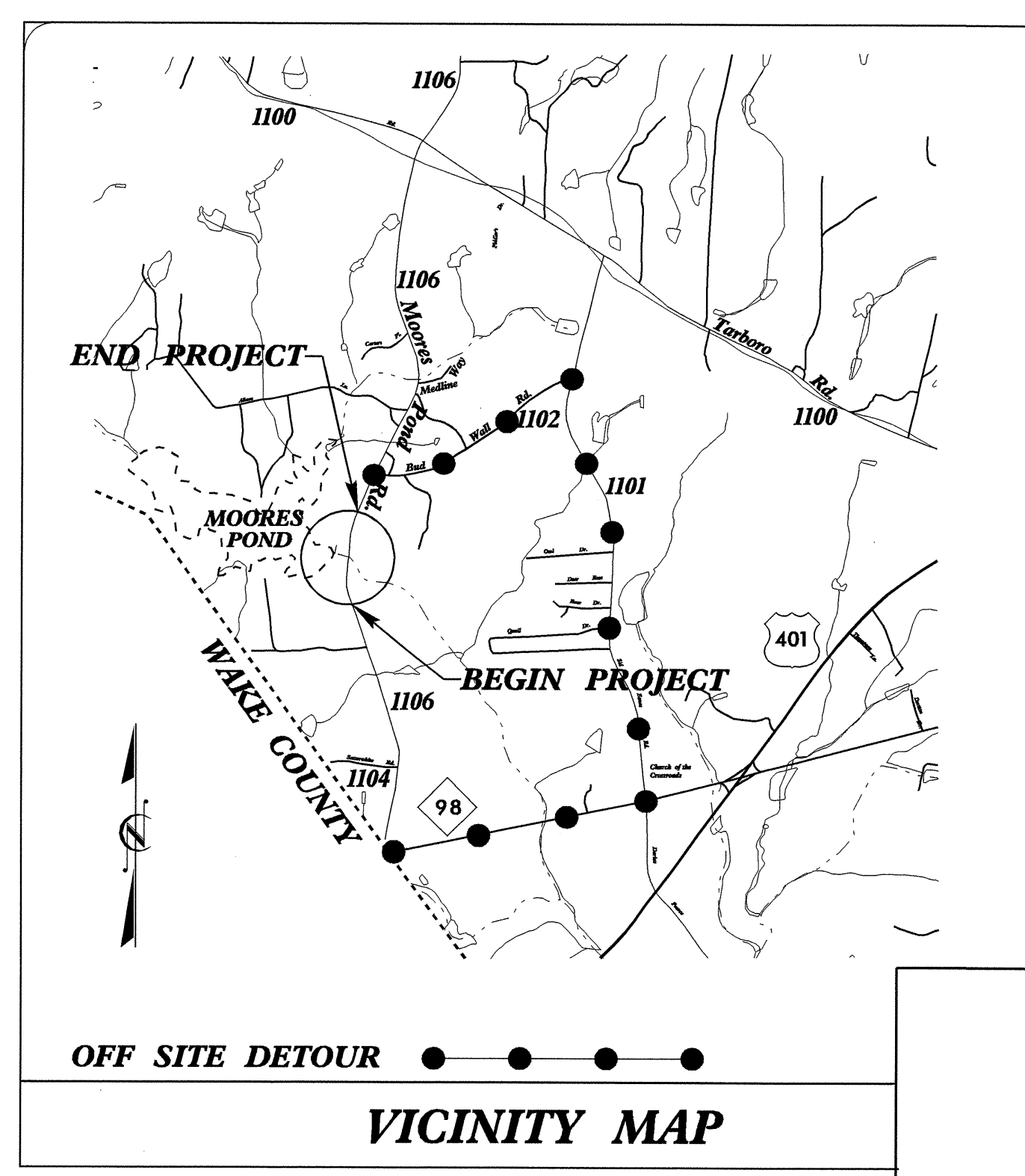
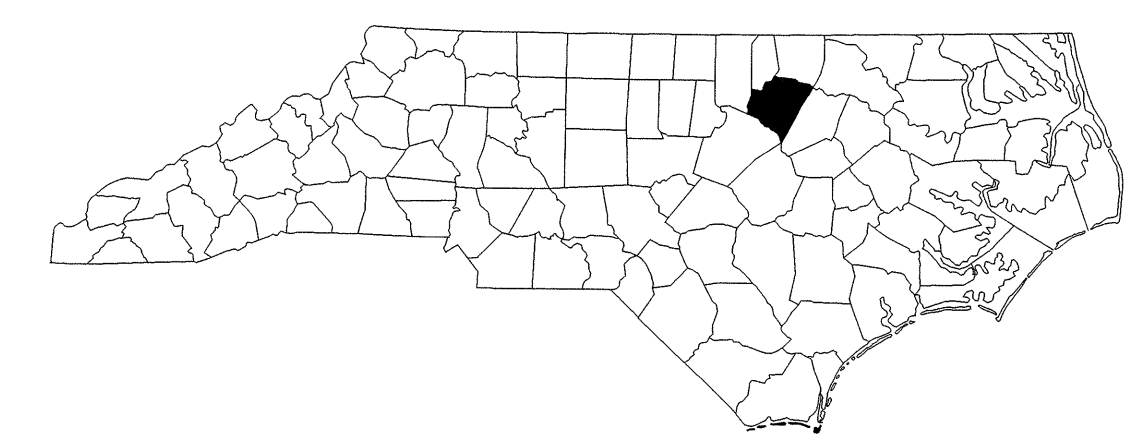
09/08/99

TIP PROJECT: B-413

| | |
|---------------|-------------|
| T.I.P. NO. | SHEET NO. |
| B-4113 | UO-1 |

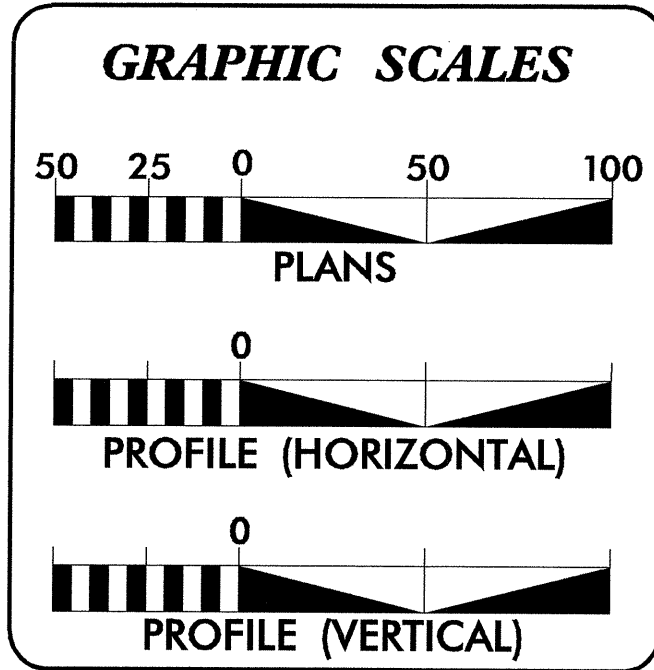
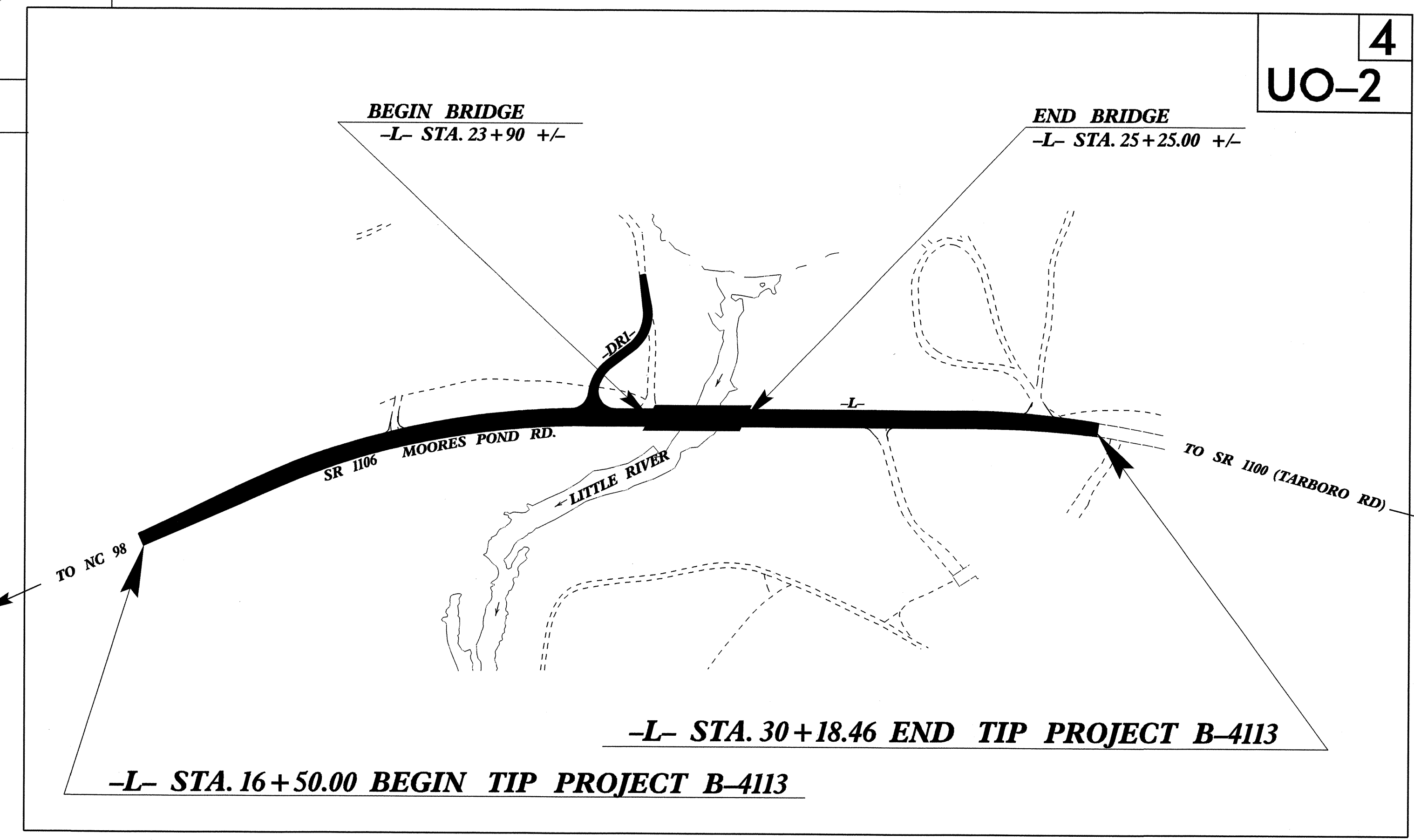
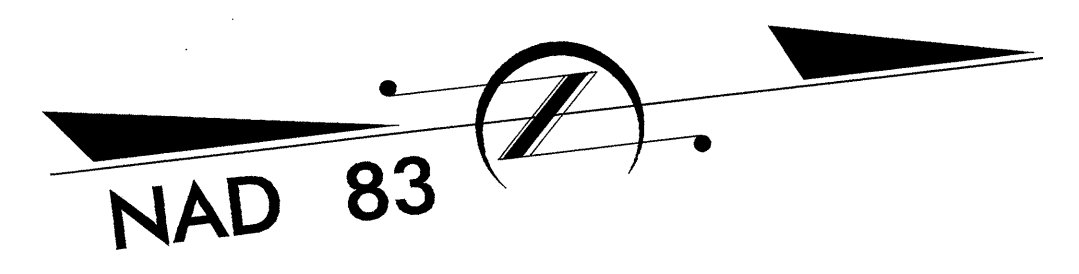
STATE OF NORTH CAROLINA
DIVISION OF HIGHWAYS

**UTILITY BY OTHERS PLANS
SWAIN COUNTY**



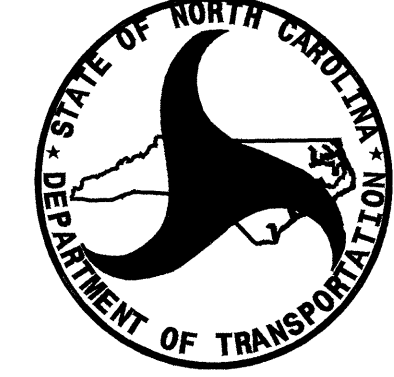
**LOCATION: BRIDGE NO. 15 OVER LITTLE RIVER AND
APPROACHES ON SR 1106 (MOORES POND RD)**

TYPE OF WORK: UTILITIES



| SHEET NO. | DESCRIPTION |
|-----------|------------------------------|
| UO-1 | TITLE SHEET |
| UO-2 | UTILITY BY OTHERS PLAN SHEET |

| UTILITY OWNERS ON PROJECT |
|---------------------------|
| (1) Wake EMC |
| (2) Sprint |



PREPARED IN THE OFFICE OF:
**DIVISION OF HIGHWAYS
DESIGN SERVICES
UTILITY SECTION**

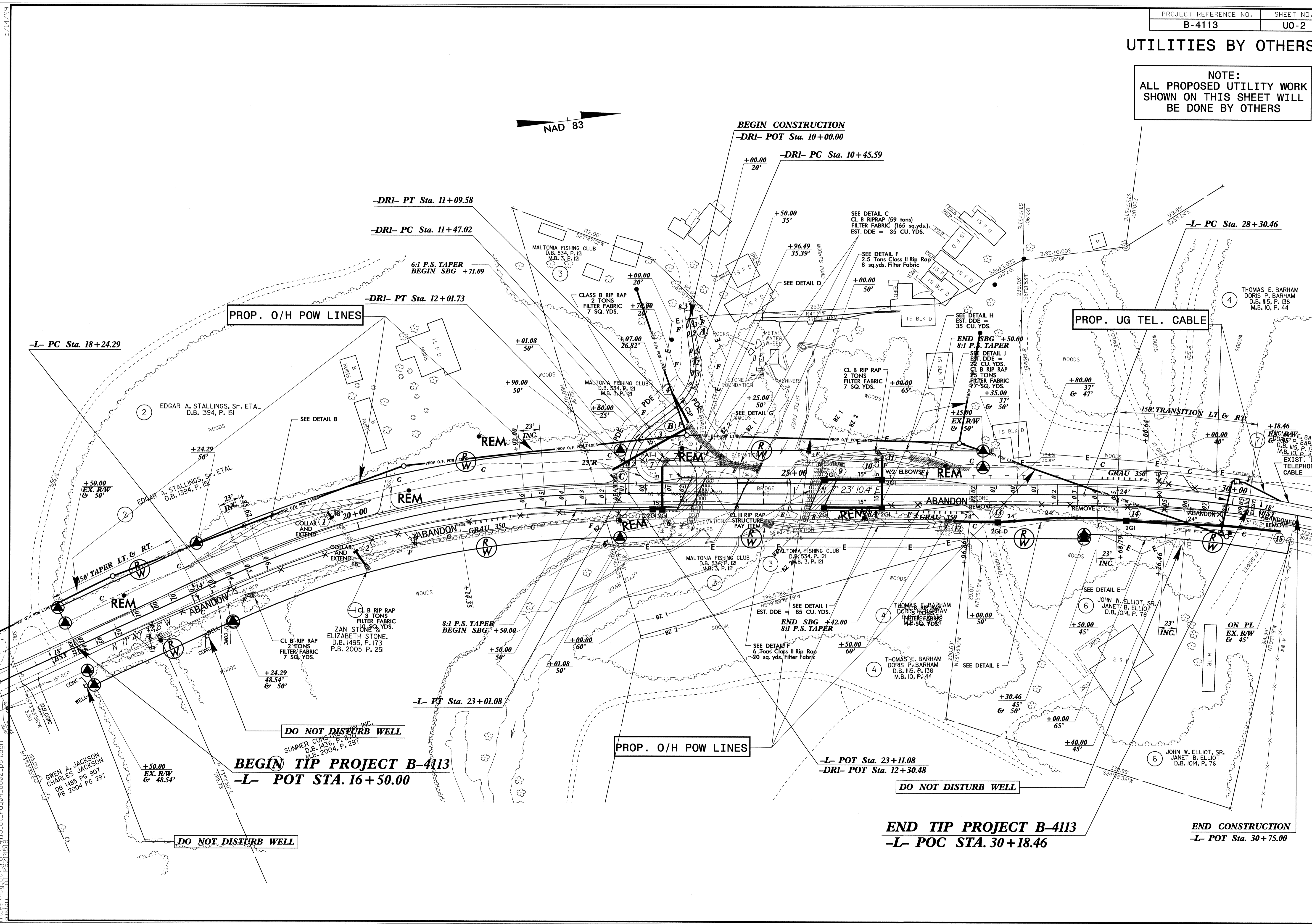
1591 MAIL SERVICES CENTER
RALEIGH NC 27699-1591
PHONE (919) 250-4128
FAX (919) 250-4119

Roger Worthington, P.E. UTILITIES SECTION ENGINEER
Steve Mckee, P.E. UTILITIES SQUAD LEADER PROJECT ENGINEER
Nabil Hamdan UTILITIES PROJECT DESIGNER

07-MAR-2006 13:46
 C:\Utilities\Yr\d\UT\proj\B4113_U1_Title_U01_psh.dgn
 rhamadan AT PS214518

UTILITIES BY OTHERS

NOTE:
ALL PROPOSED UTILITY WORK
SHOWN ON THIS SHEET WILL
BE DONE BY OTHERS



20-MAR-2006 16:09
 : utilities\rdy\ut...
 5/14/09