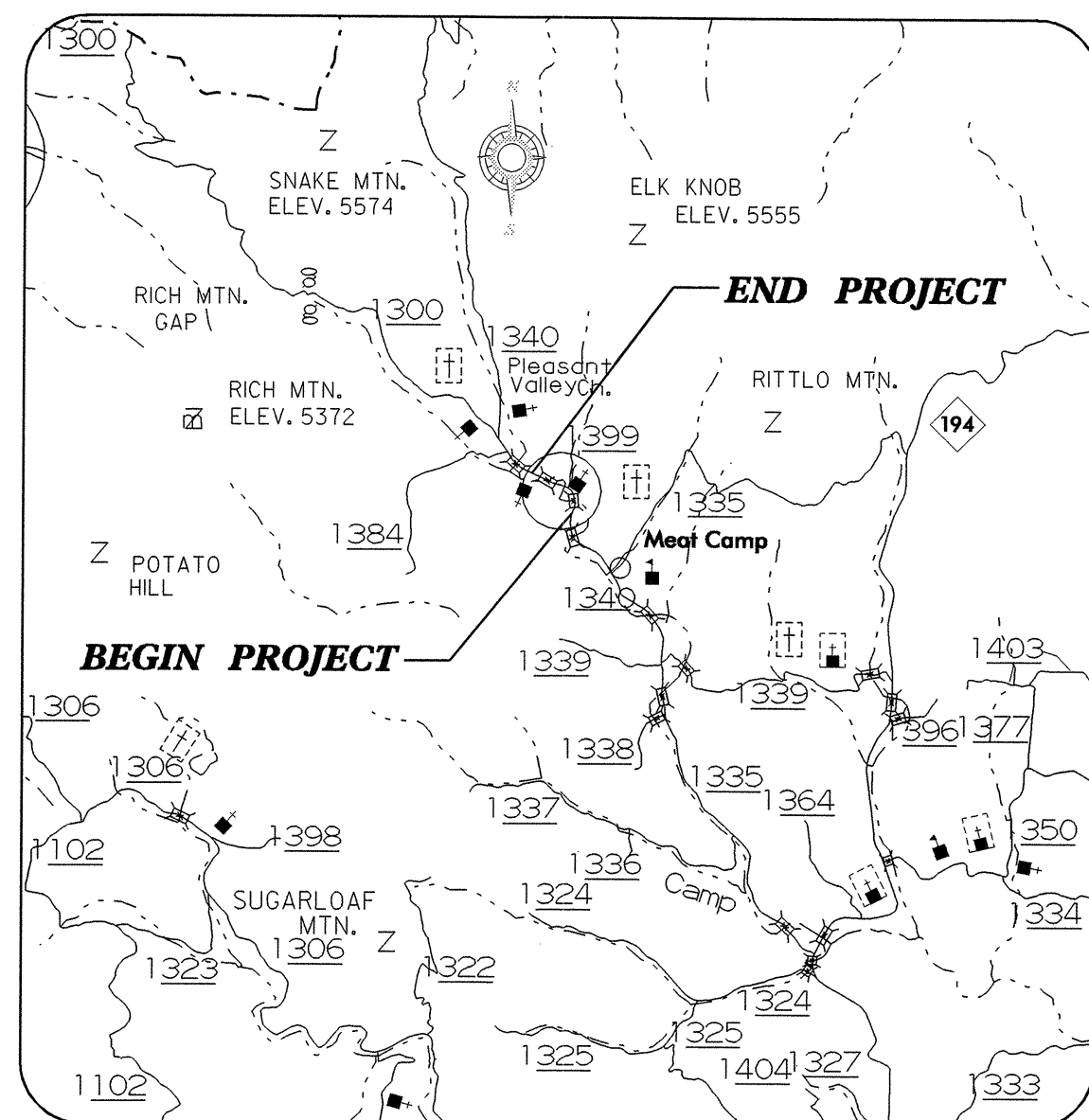


See Sheet 1-A For Index of Sheets
See Sheet 1-B For Conventional Symbols



VICINITY MAP

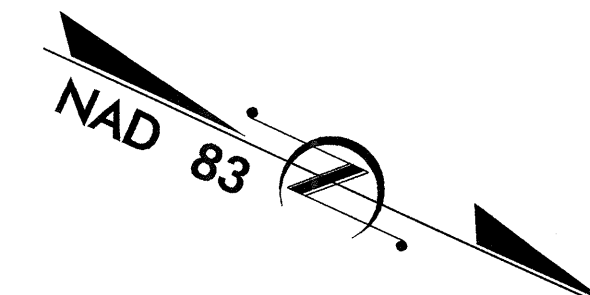
ROW SUBMITTAL

STATE OF NORTH CAROLINA
DIVISION OF HIGHWAYS

**UTILITY CONSTRUCTION PLANS
WATAUGA COUNTY**

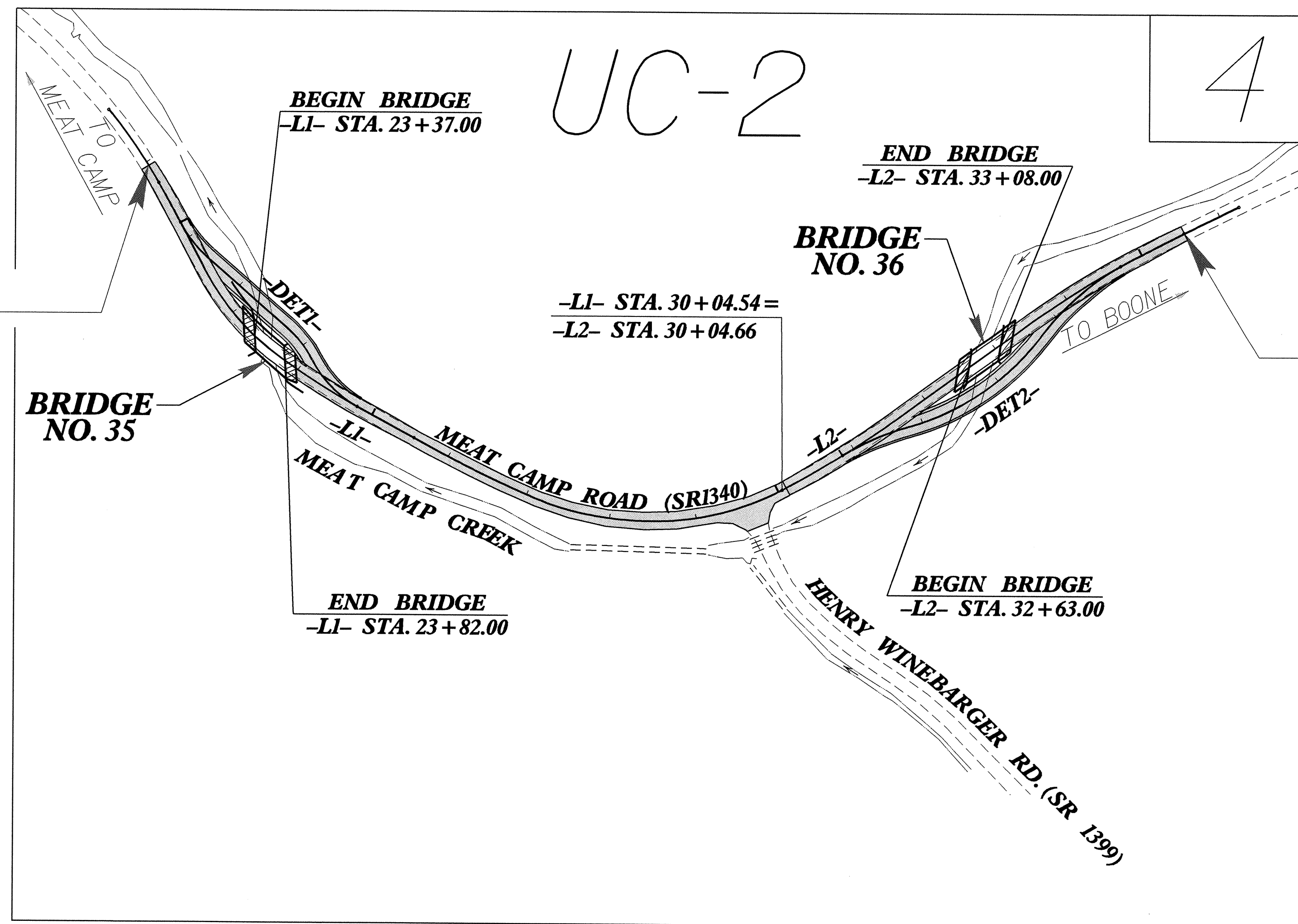
LOCATION: BRIDGE Nos. 35 & 36 OVER MEAT CAMP CREEK ON SR 1340

TYPE OF WORK: INSTALL 6" INCASTMENT
STEEL PIPE



TIP: B-3926

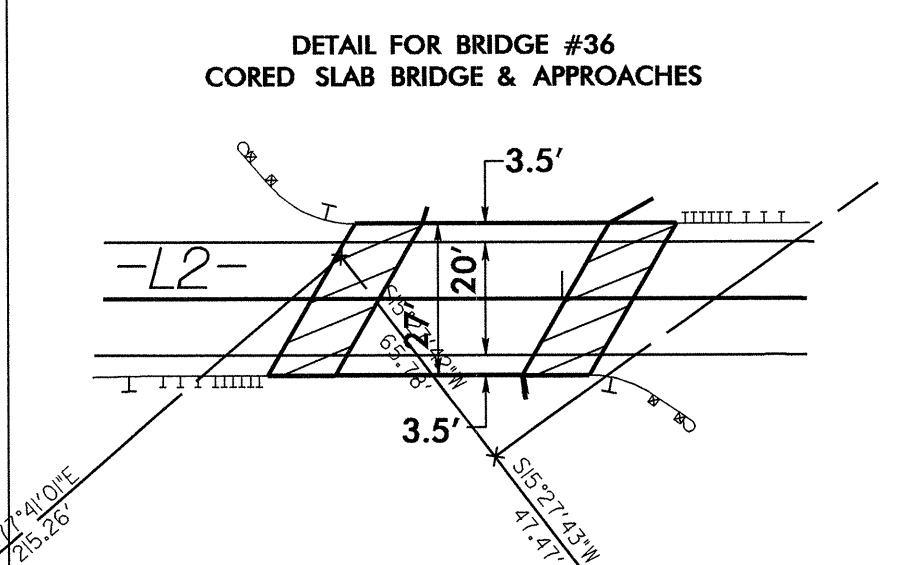
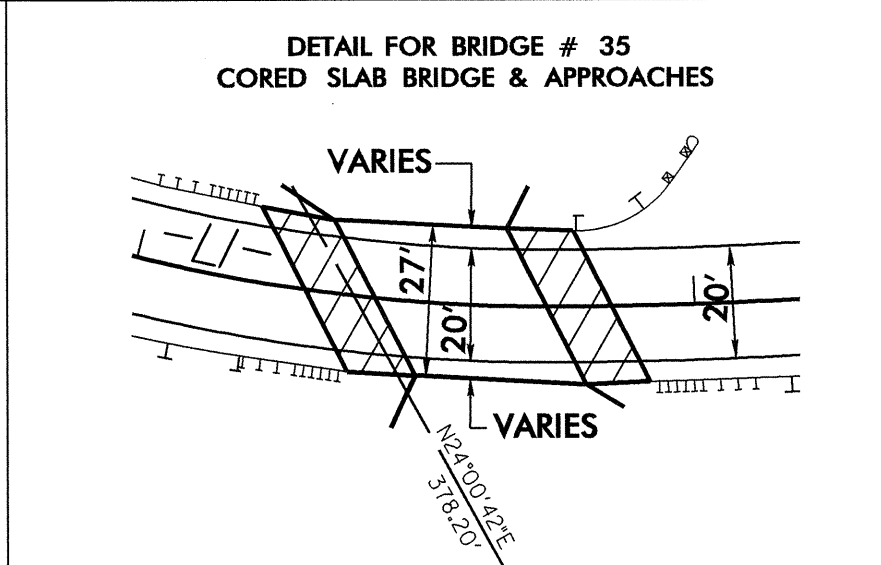
STA. 21+05.00 -L1- BEGIN
TIP PROJECT B-3926



STA. 35+55.00 -L2- END
TIP PROJECT B-3926

<table border="1"> <thead> <tr> <th>SHEET NO.</th> <th>DESCRIPTION</th> </tr> </thead> <tbody> <tr> <td>UC-1</td> <td>TITLE SHEET</td> </tr> <tr> <td>UC-2</td> <td>UTILITY CONSTRUCTION PLAN SHEET</td> </tr> </tbody> </table>	SHEET NO.	DESCRIPTION	UC-1	TITLE SHEET	UC-2	UTILITY CONSTRUCTION PLAN SHEET	<p>WATER AND SEWER OWNERS ON PROJECT</p> <p>(1) WATER LINE, Mrs Wilcox (2)</p>		<p>PREPARED IN THE OFFICE OF: DIVISION OF HIGHWAYS DESIGN SERVICES UTILITY SECTION</p> <p>1591 MAIL SERVICES CENTER RALEIGH, NC 27699-1591 PHONE (919) 250-4128 FAX (919) 250-4119</p> <p>Roger Worthington, P.E. UTILITIES SECTION ENGINEER Corey Bousquet, P.E. UTILITIES SQUAD LEADER PROJECT ENGINEER Jamshid Hafshejani UTILITIES PROJECT DESIGNER</p>
SHEET NO.	DESCRIPTION								
UC-1	TITLE SHEET								
UC-2	UTILITY CONSTRUCTION PLAN SHEET								

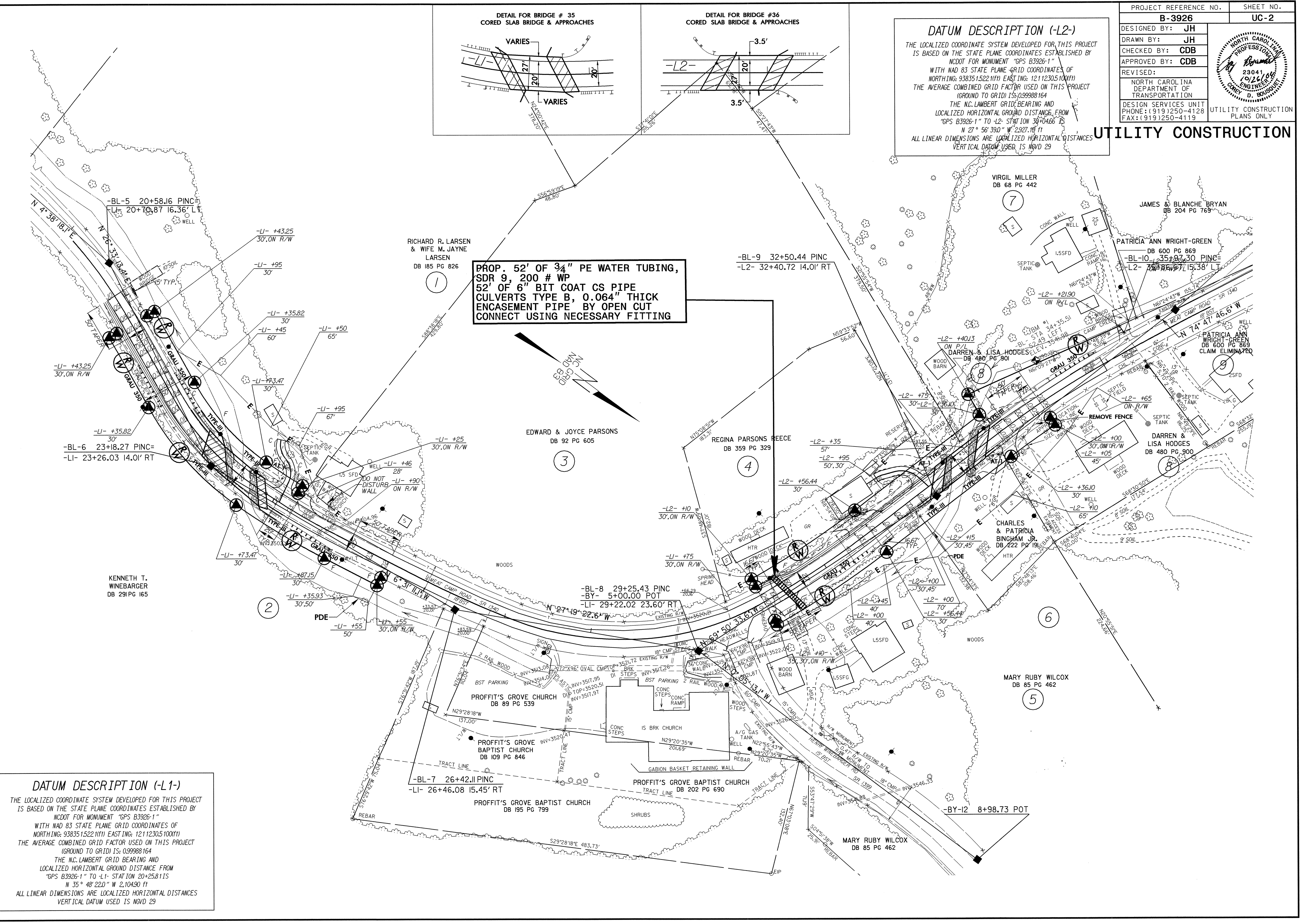
DATUM DESCRIPTION (-L2-)
 THE LOCALIZED COORDINATE SYSTEM DEVELOPED FOR THIS PROJECT IS BASED ON THE STATE PLANE COORDINATES ESTABLISHED BY NCDOT FOR MONUMENT "GPS B3926-1" WITH NAD 83 STATE PLANE GRID COORDINATES OF NORTHING: 938351522.1111 EASTING: 12112305100.1111 THE AVERAGE COMBINED GRID FACTOR USED ON THIS PROJECT (GROUND TO GRID) IS: 0.99988164 THE N.C. LAMBERT GRID BEARING AND LOCALIZED HORIZONTAL GROUND DISTANCE FROM "GPS B3926-1" TO -L2- STATION 38+04.66 IS N 27° 56' 39.0" W 2.297.18 FT ALL LINEAR DIMENSIONS ARE LOCALIZED HORIZONTAL DISTANCES VERTICAL DATUM USED IS NGVD 29



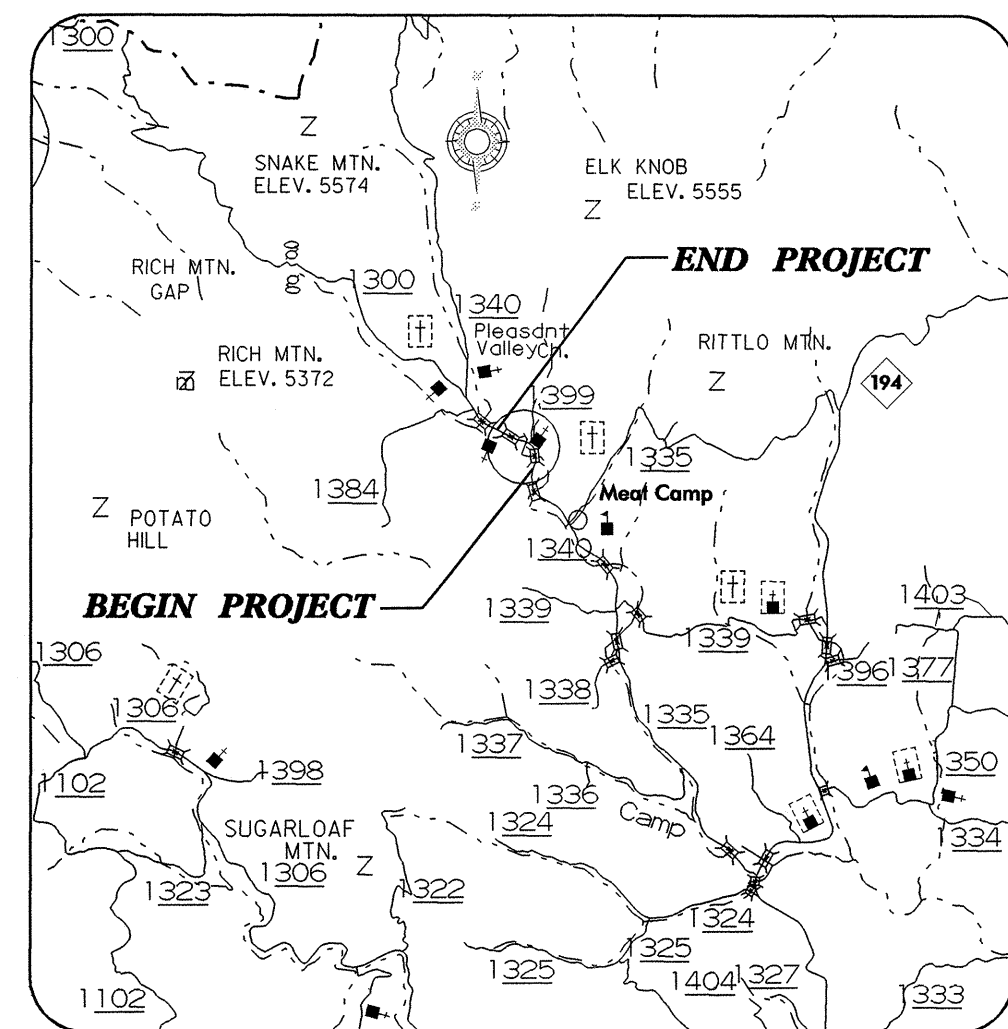
UTILITY CONSTRUCTION

PROP. 52' OF 34" PE WATER TUBING, SDR 9, 200 # WP 52' OF 6" BIT COAT CS PIPE CULVERTS TYPE B, 0.064" THICK ENCASUREMENT PIPE BY OPEN CUT CONNECT USING NECESSARY FITTING

DATUM DESCRIPTION (-L1-)
 THE LOCALIZED COORDINATE SYSTEM DEVELOPED FOR THIS PROJECT IS BASED ON THE STATE PLANE COORDINATES ESTABLISHED BY NCDOT FOR MONUMENT "GPS B3926-1" WITH NAD 83 STATE PLANE GRID COORDINATES OF NORTHING: 938351522.1111 EASTING: 12112305100.1111 THE AVERAGE COMBINED GRID FACTOR USED ON THIS PROJECT (GROUND TO GRID) IS: 0.99988164 THE N.C. LAMBERT GRID BEARING AND LOCALIZED HORIZONTAL GROUND DISTANCE FROM "GPS B3926-1" TO -L1- STATION 20+25.811S N 35° 48' 22.0" W 2,104.90 FT ALL LINEAR DIMENSIONS ARE LOCALIZED HORIZONTAL DISTANCES VERTICAL DATUM USED IS NGVD 29



See Sheet 1-A For Index of Sheets
See Sheet 1-B For Conventional Symbols



VICINITY MAP

STATE OF NORTH CAROLINA
DIVISION OF HIGHWAYS

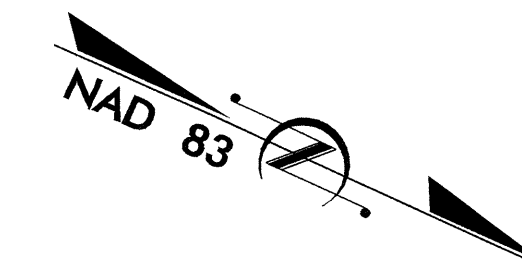
**UTILITIES BY OTHERS PLAN
WATAUGA COUNTY**

LOCATION: BRIDGE Nos. 35 & 36 OVER MEAT CAMP CREEK ON SR 1340
TYPE OF WORK: UTILITIES

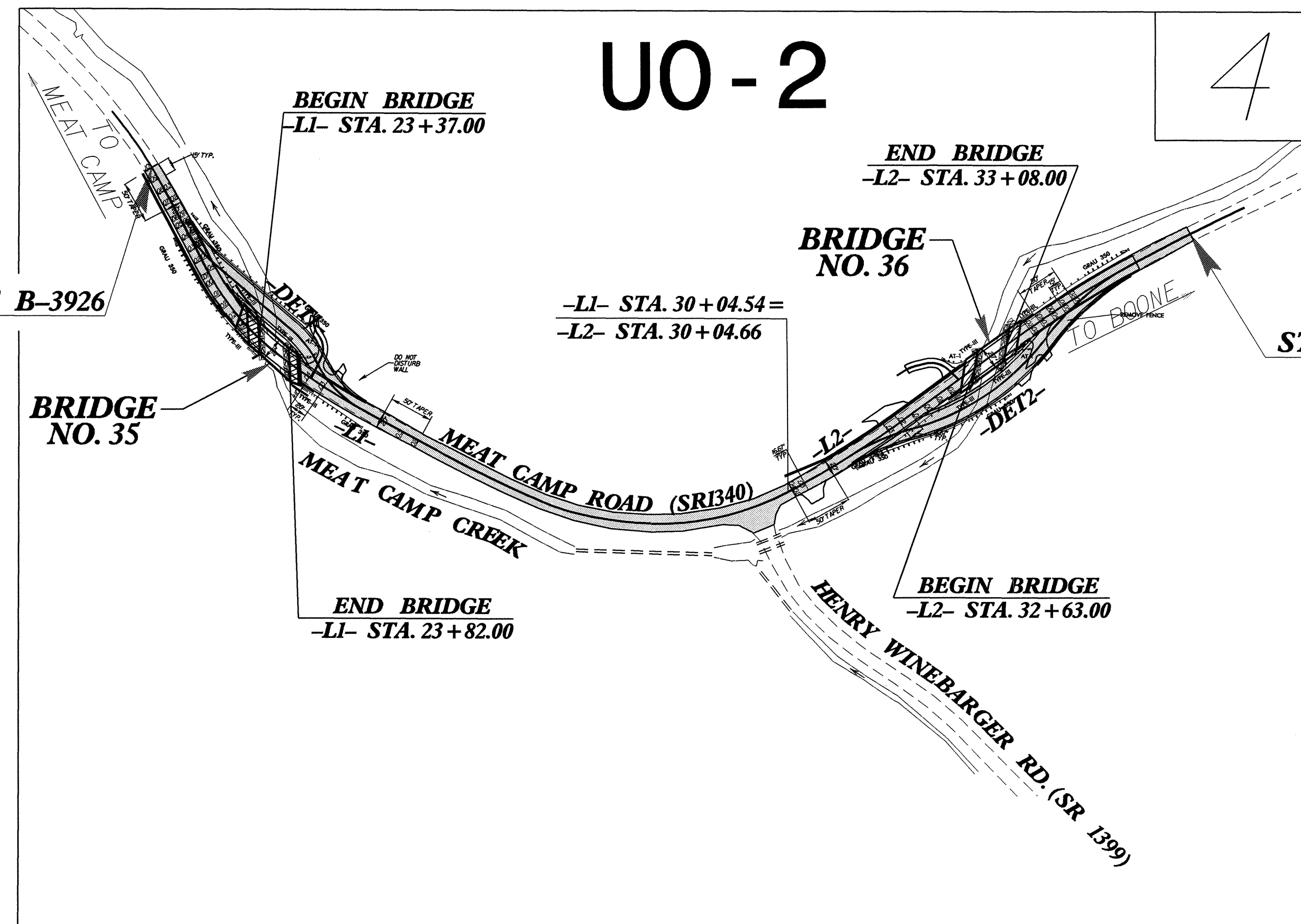
T.I.P. NO.	SHEET NO.
B-3926	UO-1

UTILITIES BY OTHERS

NOTE:
ALL PROPOSED UTILITY WORK
SHOWN ON THIS SHEET WILL
BE DONE BY OTHERS



TIP: B-3926



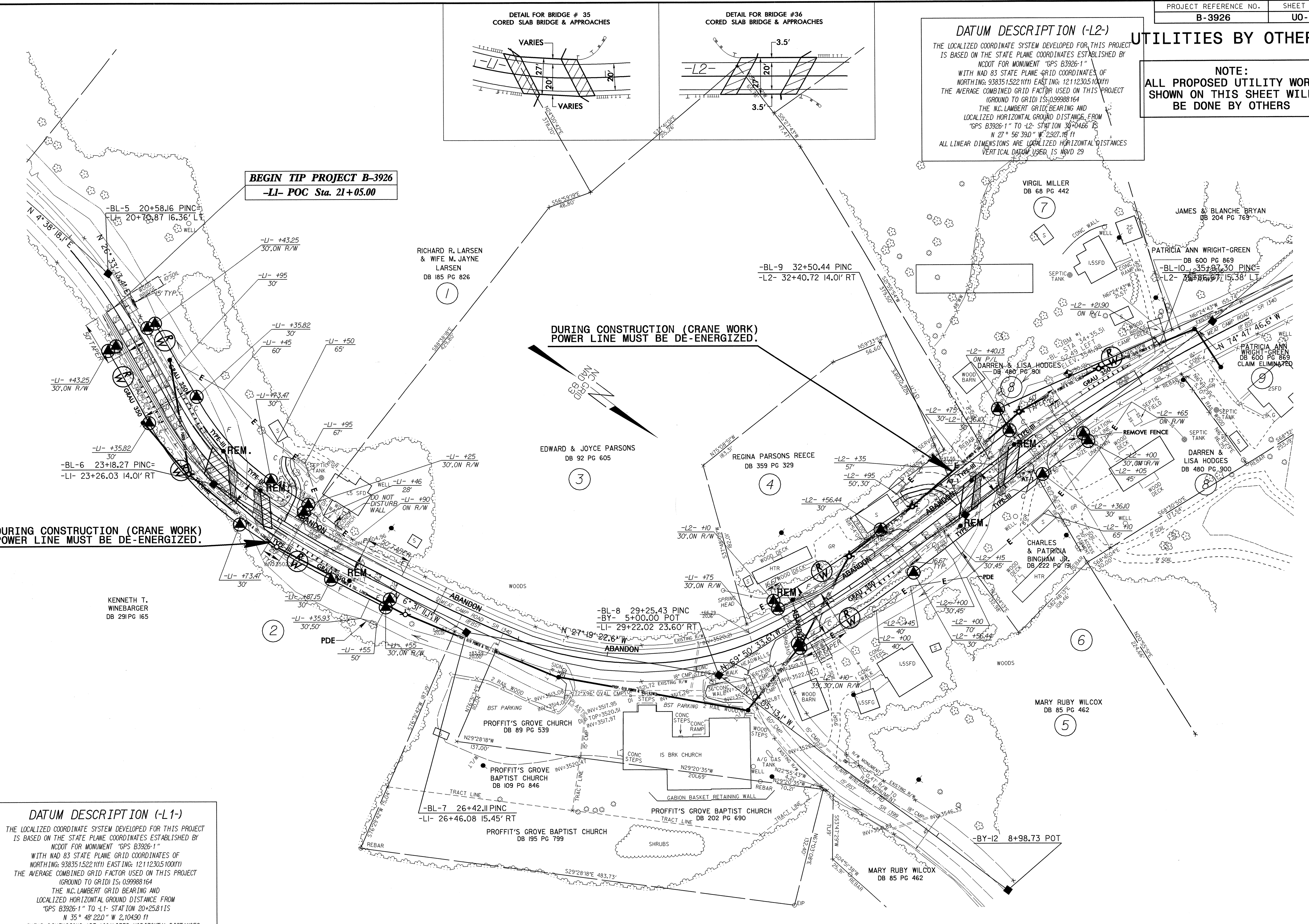
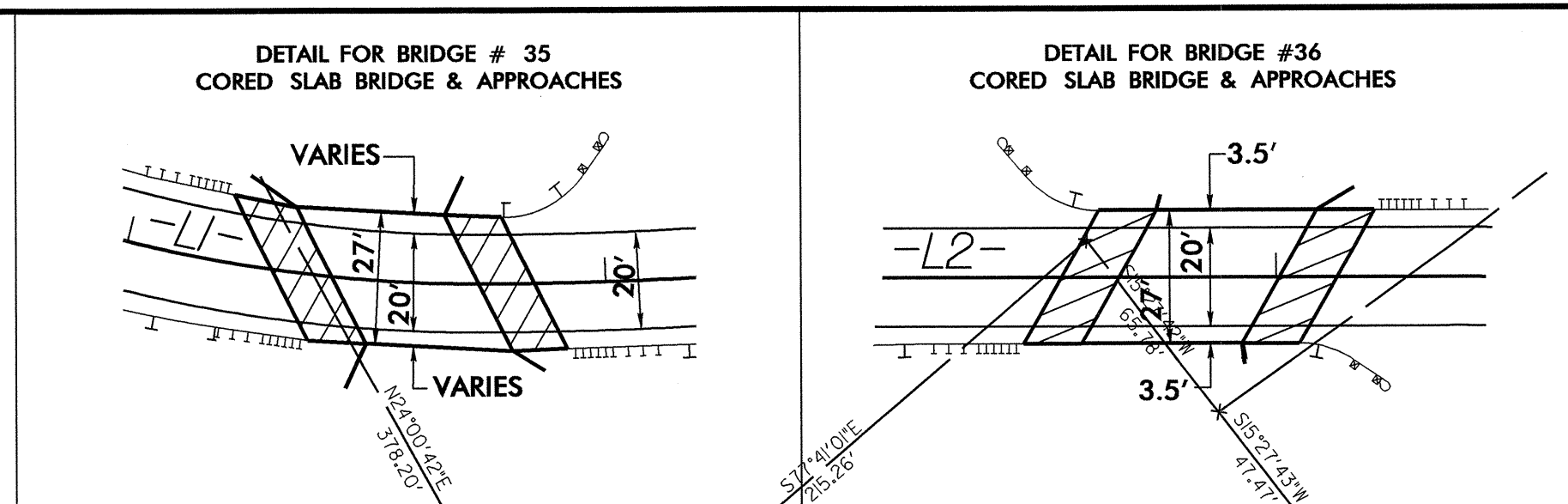
INDEX OF SHEETS	
SHEET NO.	DESCRIPTION
UO-1	TITLE SHEET
UO-2	UTILITIES BY OTHERS PLAN SHEET

UTILITIES BY OTHERS ON PROJECT
(1) EMC ENERGY
(2) BELLSOUTH

UTILITIES BY OTHERS

NOTE:
ALL PROPOSED UTILITY WORK
SHOWN ON THIS SHEET WILL
BE DONE BY OTHERS

DATUM DESCRIPTION (-L2-)
THE LOCALIZED COORDINATE SYSTEM DEVELOPED FOR THIS PROJECT IS BASED ON THE STATE PLANE COORDINATES ESTABLISHED BY NCDOT FOR MONUMENT "GPS B3926-1" WITH NAD 83 STATE PLANE GRID COORDINATES OF NORTHING: 938351522.11(1) EASTING: 12112305100(1) THE AVERAGE COMBINED GRID FACTOR USED ON THIS PROJECT (GROUND TO GRID) IS: 0.99988164 THE N.C. LAMBERT GRID BEARING AND LOCALIZED HORIZONTAL GROUND DISTANCE FROM "GPS B3926-1" TO L2- STATION 30+04.66 IS N 27° 58' 39.0" W 2927.18 FT ALL LINEAR DIMENSIONS ARE LOCALIZED HORIZONTAL DISTANCES VERTICAL DATUM USED IS NGVD 29



BEGIN TIP PROJECT B-3926
-L1- POC Sta. 21+05.00

DURING CONSTRUCTION (CRANE WORK)
POWER LINE MUST BE DE-ENERGIZED.

DURING CONSTRUCTION (CRANE WORK)
POWER LINE MUST BE DE-ENERGIZED.

DATUM DESCRIPTION (-L1-)
THE LOCALIZED COORDINATE SYSTEM DEVELOPED FOR THIS PROJECT IS BASED ON THE STATE PLANE COORDINATES ESTABLISHED BY NCDOT FOR MONUMENT "GPS B3926-1" WITH NAD 83 STATE PLANE GRID COORDINATES OF NORTHING: 938351522.11(1) EASTING: 12112305100(1) THE AVERAGE COMBINED GRID FACTOR USED ON THIS PROJECT (GROUND TO GRID) IS: 0.99988164 THE N.C. LAMBERT GRID BEARING AND LOCALIZED HORIZONTAL GROUND DISTANCE FROM "GPS B3926-1" TO L1- STATION 20+25.81 IS N 35° 48' 22.0" W 2,104.90 FT ALL LINEAR DIMENSIONS ARE LOCALIZED HORIZONTAL DISTANCES VERTICAL DATUM USED IS NGVD 29

8/17/99
 25-OCT-2004 09:01
 R:\Utilities\rdy-11-10-2004\B-3926-UO-2.dgn
 rdyl\rdy