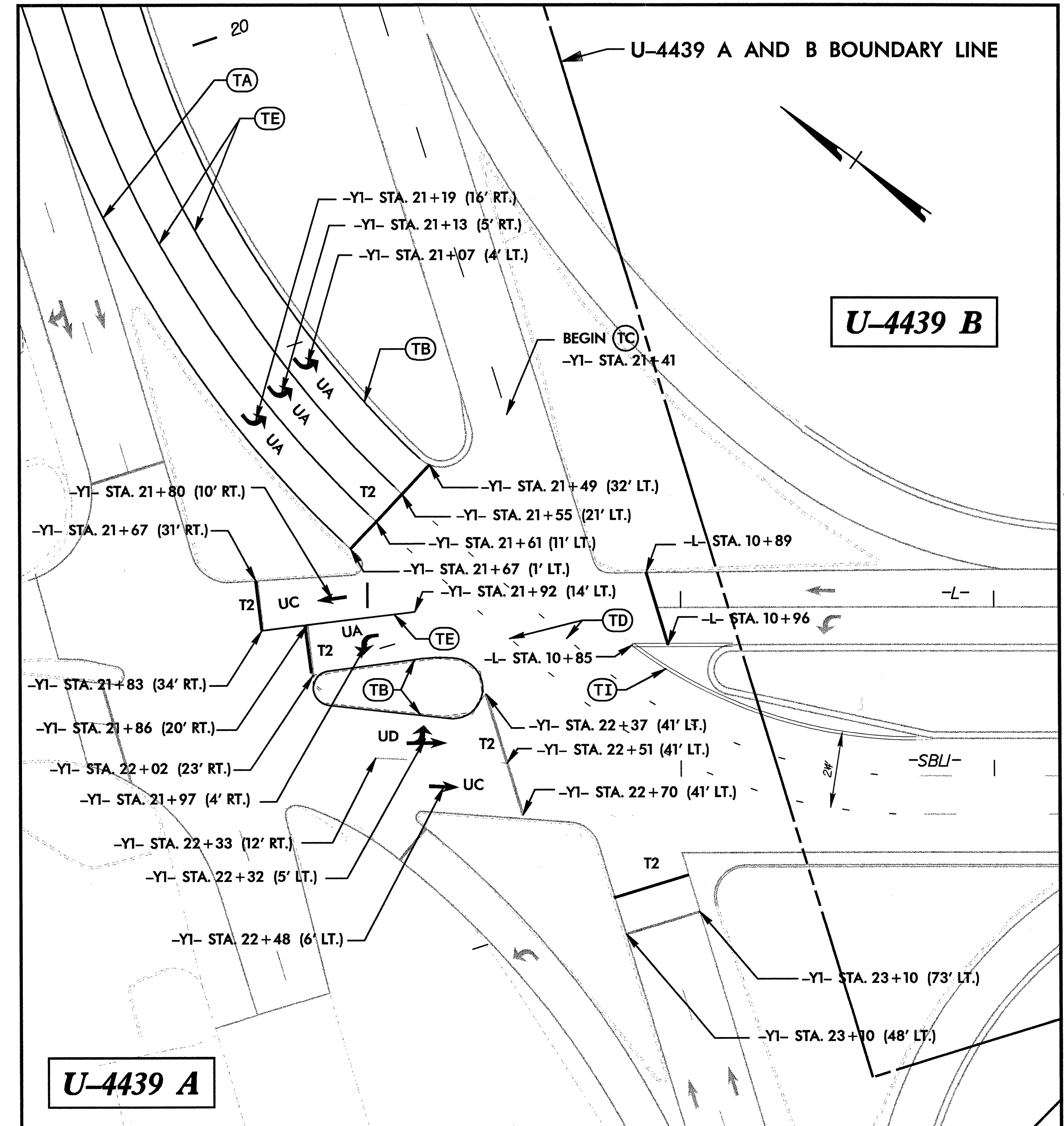


## FINAL PAVEMENT MARKING SCHEDULE

SYMB	DESCRIPTION	PAY ITEM QUANTITY	TOTAL
PAVEMENT MARKINGS			
TA	WHITE EDGELINE	16896 LF	
TB	YELLOW EDGELINE	3630 LF	
	TOTAL		20526 LF
	THERMOPLASTIC (4", 120 MILS)		
TC	10 FT. WHITE SKIP	3954 LF	
TD	2 FT. WHITE MINISKIP	576 LF	
TE	WHITE SOLID LANE LINE	3560 LF	
TI	YELLOW DOUBLE CENTER	14847 LF	
	TOTAL		22937 LF
	THERMOPLASTIC (6", 120 MILS)		
TN	2 FT. YELLOW MINISKIP	18 LF	
	TOTAL		18 LF
	THERMOPLASTIC (8", 90 MILS)		
TP	WHITE GORELINE	284 LF	
TQ	WHITE DIAGONAL	90 LF	
TT	YELLOW DIAGONAL	511 LF	
TV	WHITE CROSSWALK	649 LF	
	TOTAL		1534 LF
	THERMOPLASTIC (24", 120 MILS)		
T2	WHITE STOPBAR	402 LF	
	TOTAL		402 LF
UI	ALPHANUMERIC CHAR.	8 EA	
	TOTAL		8 EA
	THERMOPLASTIC PAVEMENT MARKING SYMBOLS (90 MILS)		
UA	LEFT TURN ARROW	29 EA	
UB	RIGHT TURN ARROW	15 EA	
UC	STRAIGHT ARROW	19 EA	
UD	COMBO. STRAIGHT/LEFT	3 EA	
UE	COMBO. STRAIGHT/RIGHT	4 EA	
	TOTAL		70 EA
MARKERS			
PERMANENT RAISED PAVEMENT MARKERS			
MA	YELLOW & YELLOW	196 EA	
MB	CRYSTAL & RED	733 EA	
	TOTAL		929 EA

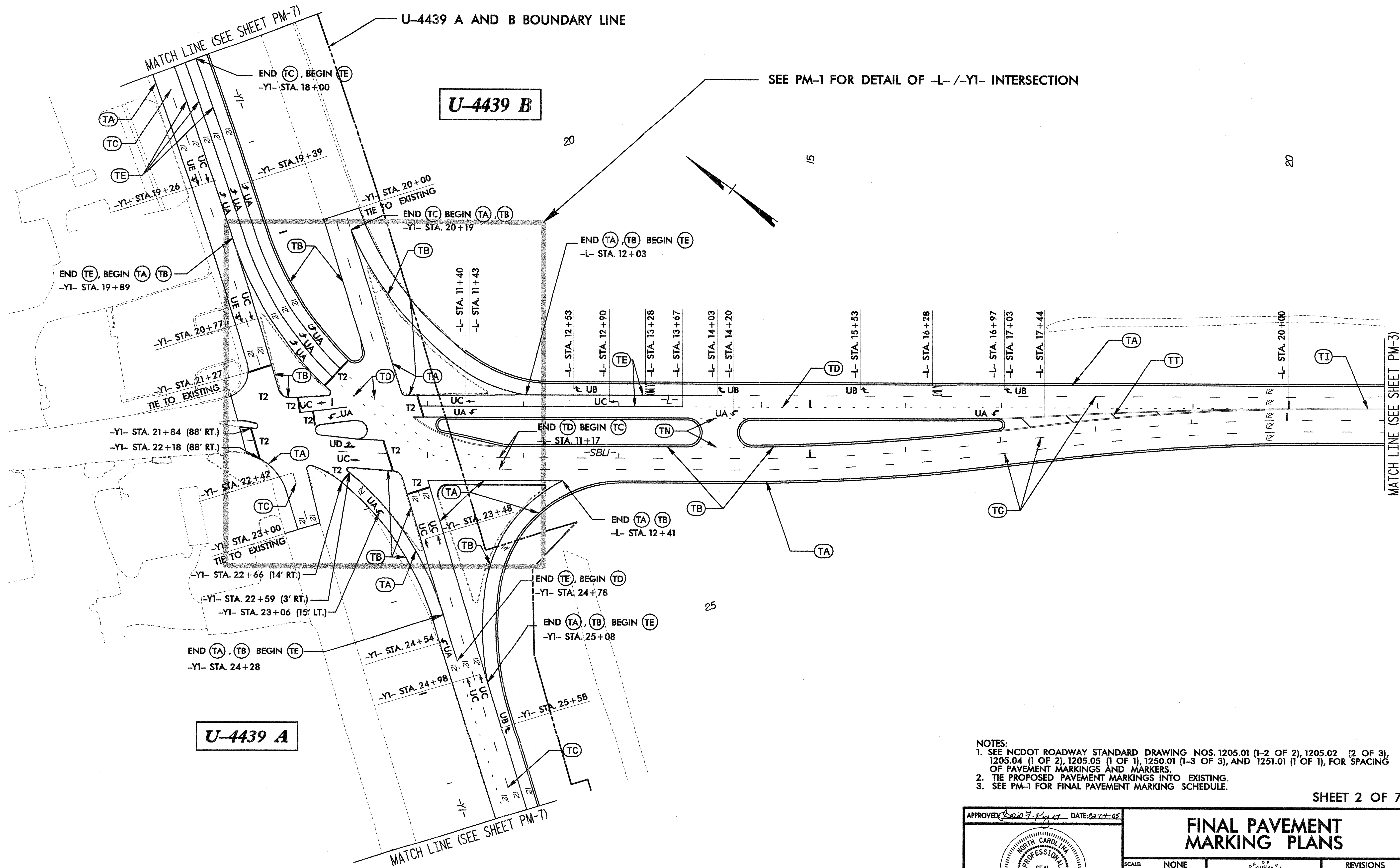


### DETAIL OF -L- / -YI- INTERSECTION

- NOTES:
- SEE NCDOT ROADWAY STANDARD DRAWING NOS. 1205.01 (1-2 OF 2), 1205.02 (2 OF 3), 1205.04 (1 OF 2), 1205.05 (1 OF 1), 1250.01 (1-3 OF 3), AND 1251.01 (1 OF 1), FOR SPACING OF PAVEMENT MARKINGS AND MARKERS.
  - TIE PROPOSED PAVEMENT MARKINGS INTO EXISTING.

APPROVED: <i>[Signature]</i>	DATE: 02-01-06	<b>FINAL PAVEMENT MARKING PLANS</b>	
	SCALE: NONE		
	DATE: 02-01-06		
	DWG. BY: GFK		
	DESIGN BY: GFK		
REVIEWED BY: RWP	REVISIONS:		
		CADD FILE: U4439 TCP PM01.DGN	

02/06/2006 R:\11\offic\Control\Top\1102\U4439\_Tcp\_pm01.dgn 02:05:57 PM

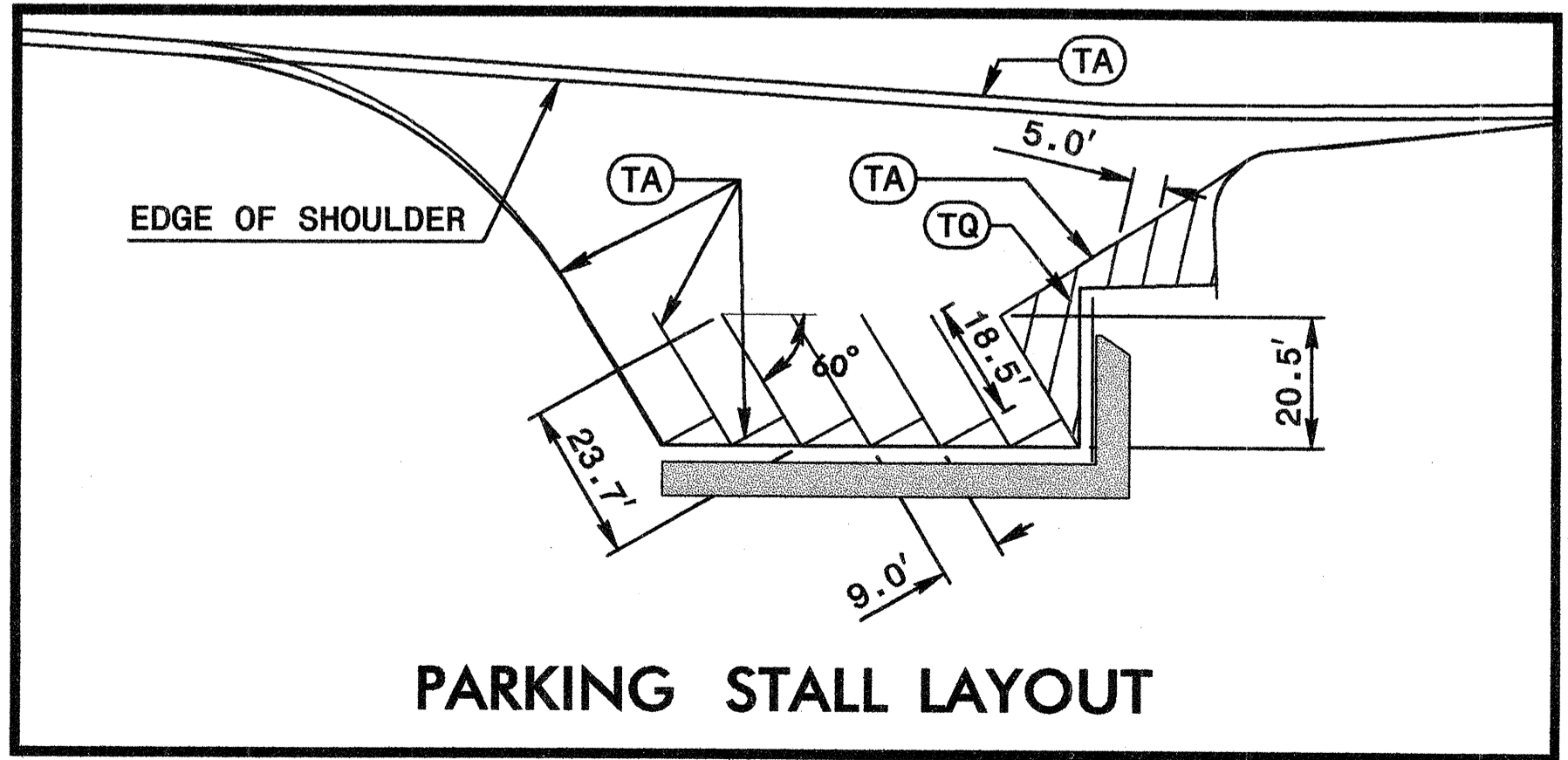
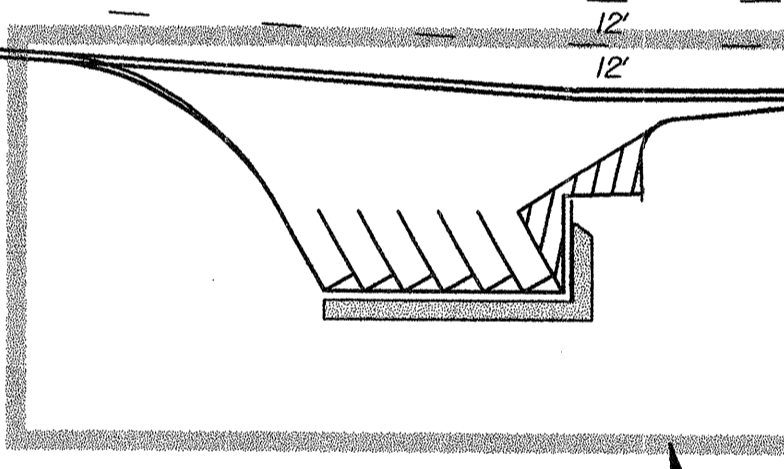
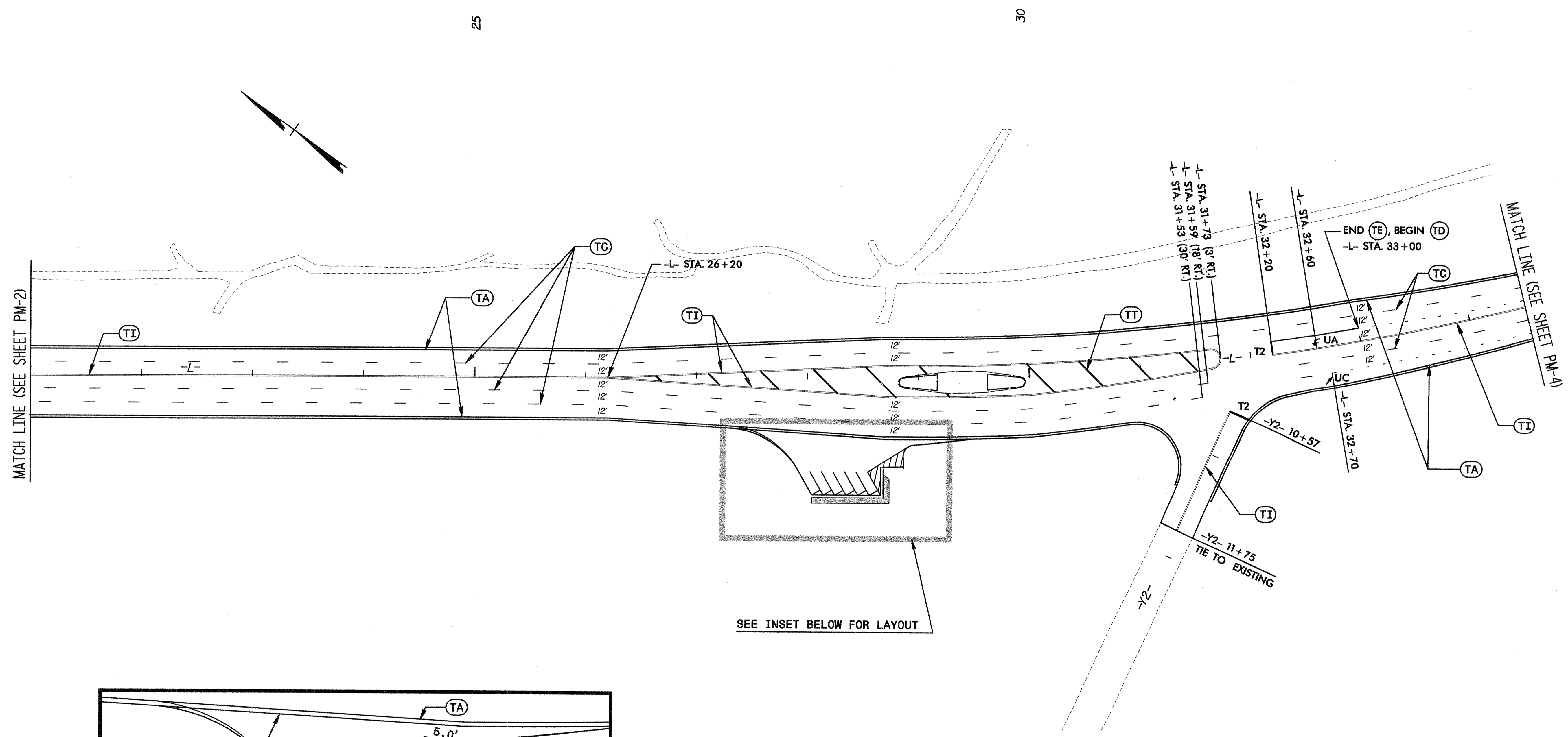


NOTES:  
 1. SEE NCDOT ROADWAY STANDARD DRAWING NOS. 1205.01 (1-2 OF 2), 1205.02 (2 OF 3), 1205.04 (1 OF 2), 1205.05 (1 OF 1), 1250.01 (1-3 OF 3), AND 1251.01 (1 OF 1), FOR SPACING OF PAVEMENT MARKINGS AND MARKERS.  
 2. TIE PROPOSED PAVEMENT MARKINGS INTO EXISTING.  
 3. SEE PM-1 FOR FINAL PAVEMENT MARKING SCHEDULE.

SHEET 2 OF 7

APPROVED: <i>[Signature]</i> DATE: 02-04-05	<b>FINAL PAVEMENT MARKING PLANS</b>		REVISIONS	
SEAL			SCALE: NONE	
	DATE: 11-08-04		DWG. BY: GFK	
	DESIGN BY: GFK			
	REVIEWED BY: RWP			
		U4439 TCP PM02.DGN		

02/04/2005  
 P:\JOBS\0659\04\U4439\TraffcControl\Top\100%\u4439\_top\_pm02.dgn  
 09:46:57 AM

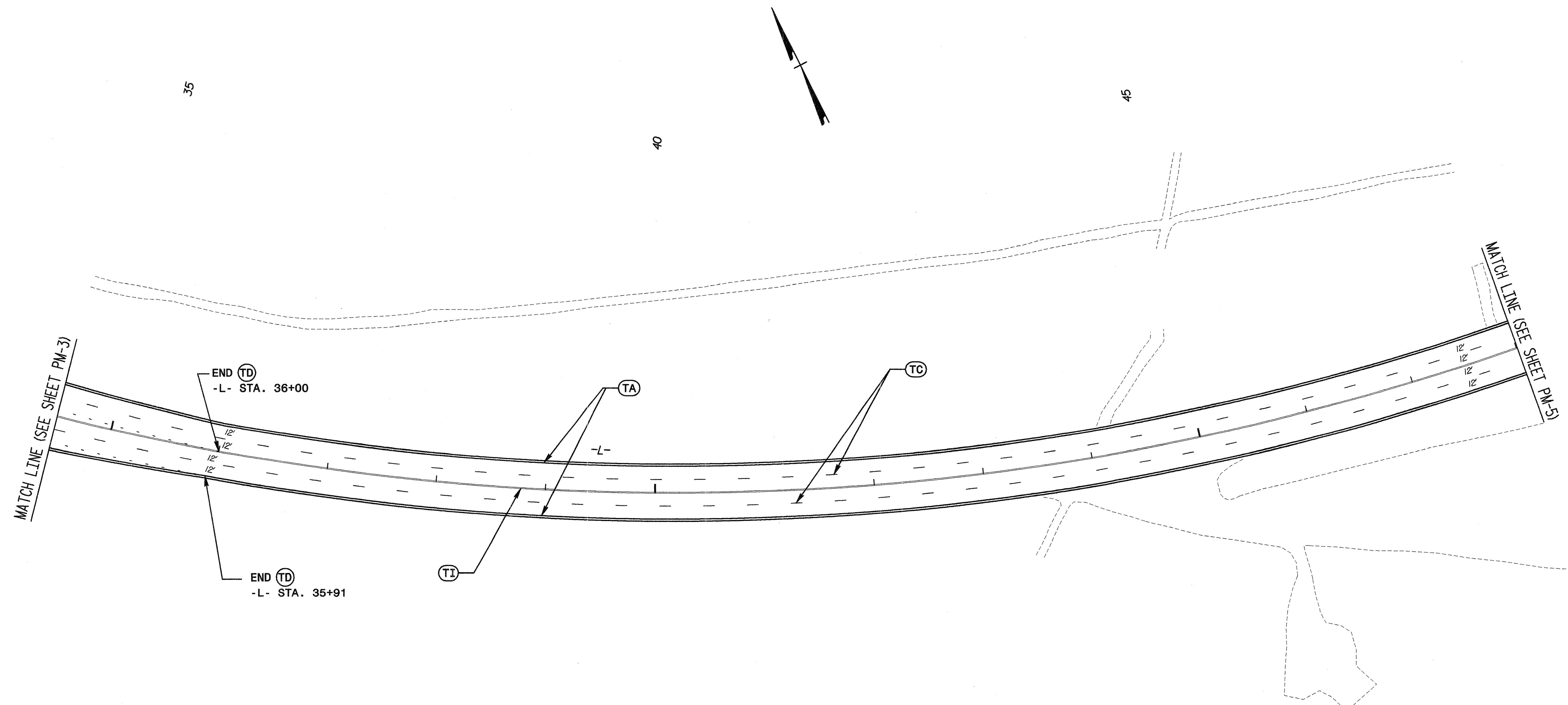


- NOTES:
- SEE NCDOT ROADWAY STANDARD DRAWING NOS. 1205.01 (1-2 OF 2), 1205.02 (2 OF 3), 1205.04 (1 OF 2), 1205.05 (1 OF 1), 1250.01 (1-3 OF 3), AND 1251.01 (1 OF 1), FOR SPACING OF PAVEMENT MARKINGS AND MARKERS.
  - TIE PROPOSED PAVEMENT MARKINGS INTO EXISTING.
  - SEE PM-1 FOR FINAL PAVEMENT MARKING SCHEDULE.

SHEET 3 OF 7

APPROVED: <i>[Signature]</i> DATE: 11-14-04	<h3>FINAL PAVEMENT MARKING PLANS</h3>			REVISIONS
				SCALE: NONE
	DATE: 11-08-04	DWG. BY: GFK	DESIGN BY: GFK	REVIEWED BY: RWP
				CADD FILE: U4439 TCP PM03.DGN

02/04/2005  
 P:\JOBS\0659\04\U4439\TrafficControl\Top\000\U4439\_tcp\_pm03.dgn  
 10:46:58 AM

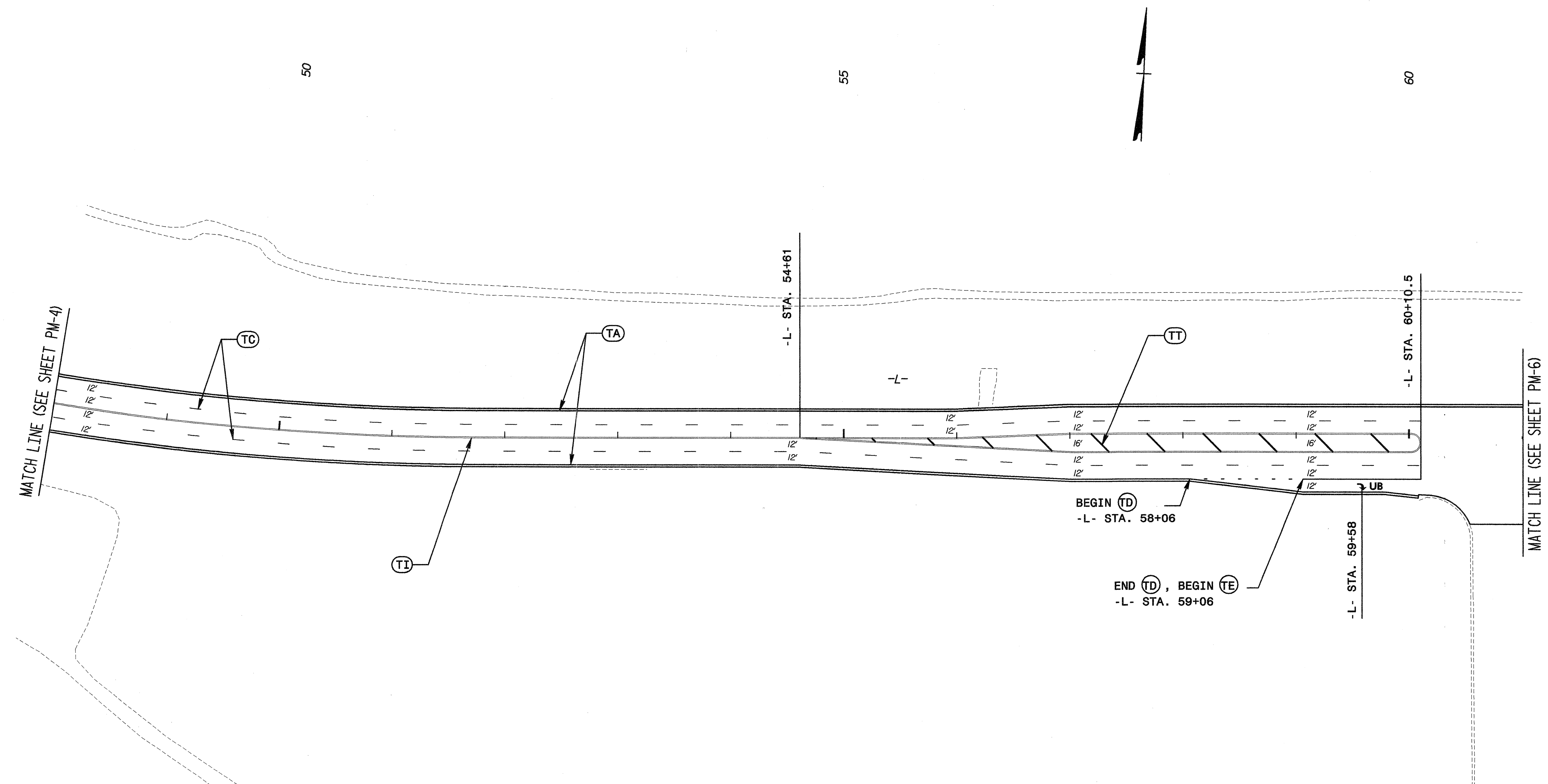


- NOTES:
- SEE NCDOT ROADWAY STANDARD DRAWING NOS. 1205.01 (1-2 OF 2), 1205.02 (2 OF 3), 1205.04 (1 OF 2), 1205.05 (1 OF 1), 1250.01 (1-3 OF 3), AND 1251.01 (1 OF 1), FOR SPACING OF PAVEMENT MARKINGS AND MARKERS.
  - TIE PROPOSED PAVEMENT MARKINGS INTO EXISTING.
  - SEE PM-1 FOR FINAL PAVEMENT MARKING SCHEDULE.

SHEET 4 OF 7

APPROVED: <i>[Signature]</i> DATE: 02-04-05	<b>FINAL PAVEMENT MARKING PLANS</b>	
	SCALE: NONE	
	DATE: 11-08-04	
	DWG. BY: GFK	
	DESIGN BY: GFK	
REVIEWED BY: RWP	REVISIONS	

02/04/2005  
 P:\JOBS\06559\04\U4439\TrafficControl\Top\000\U4439\_tcp\_pm04.dgn  
 10:46:58 AM

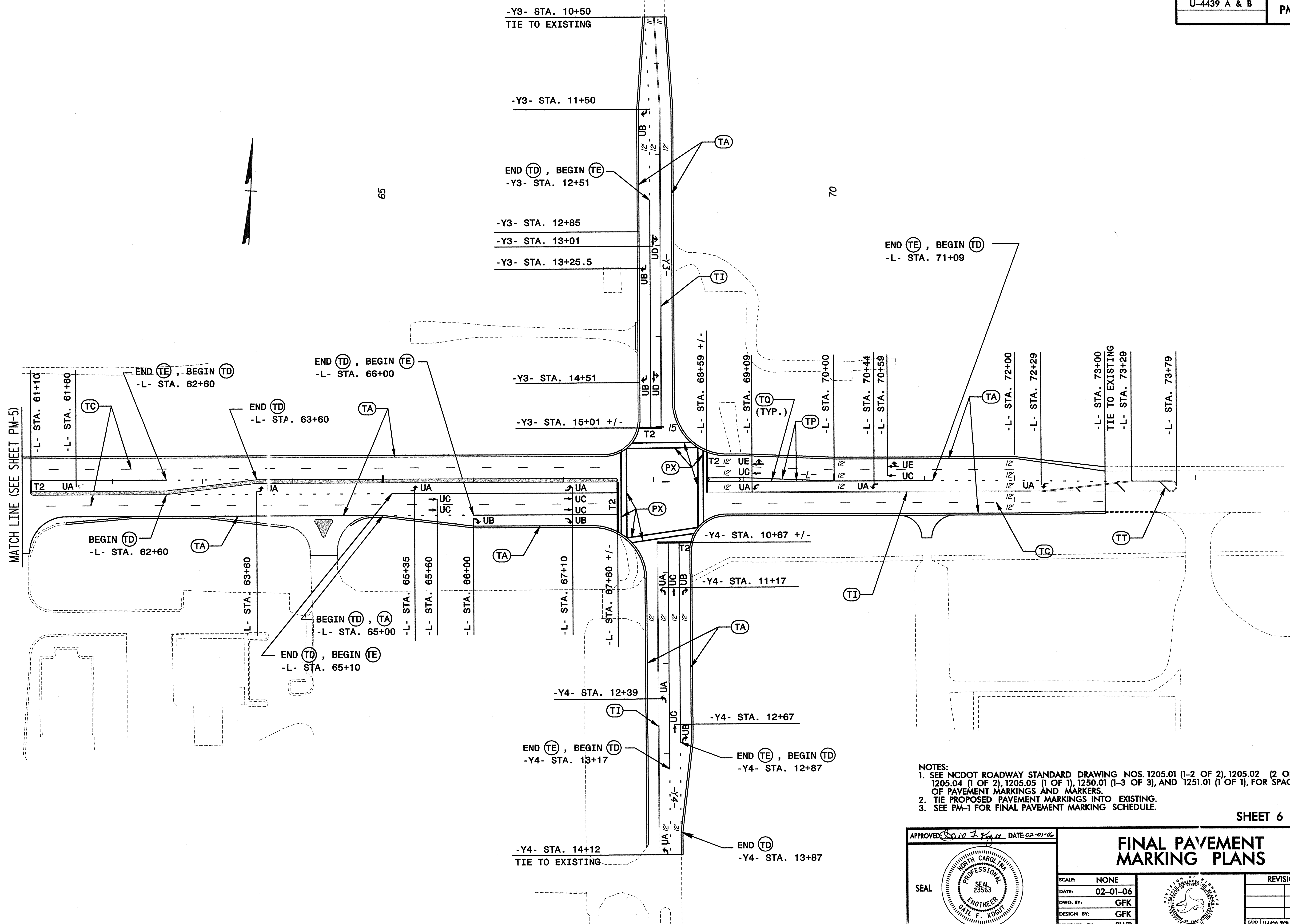


- NOTES:
- SEE NCDOT ROADWAY STANDARD DRAWING NOS. 1205.01 (1-2 OF 2), 1205.02 (2 OF 3), 1205.04 (1 OF 2), 1205.05 (1 OF 1), 1250.01 (1-3 OF 3), AND 1251.01 (1 OF 1), FOR SPACING OF PAVEMENT MARKINGS AND MARKERS.
  - TIE PROPOSED PAVEMENT MARKINGS INTO EXISTING.
  - SEE PM-1 FOR FINAL PAVEMENT MARKING SCHEDULE.

SHEET 5 OF 7

APPROVED: <i>[Signature]</i> DATE: 02-24-05	<b>FINAL PAVEMENT MARKING PLANS</b>	
	SCALE: NONE	
	DATE: 11-08-04	
	DWG. BY: GFK	
	DESIGN BY: GFK	
REVIEWED BY: RWP	REVISIONS	<small>CADD FILE</small> U4439 TCP PM05.DGN

02/04/2005  
 P:\JOBS\0659\04\U4439\TrafficControl\Top\100%\U4439\_top\_pm05.dgn  
 10:46:59 AM



MATCH LINE (SEE SHEET PM-5)

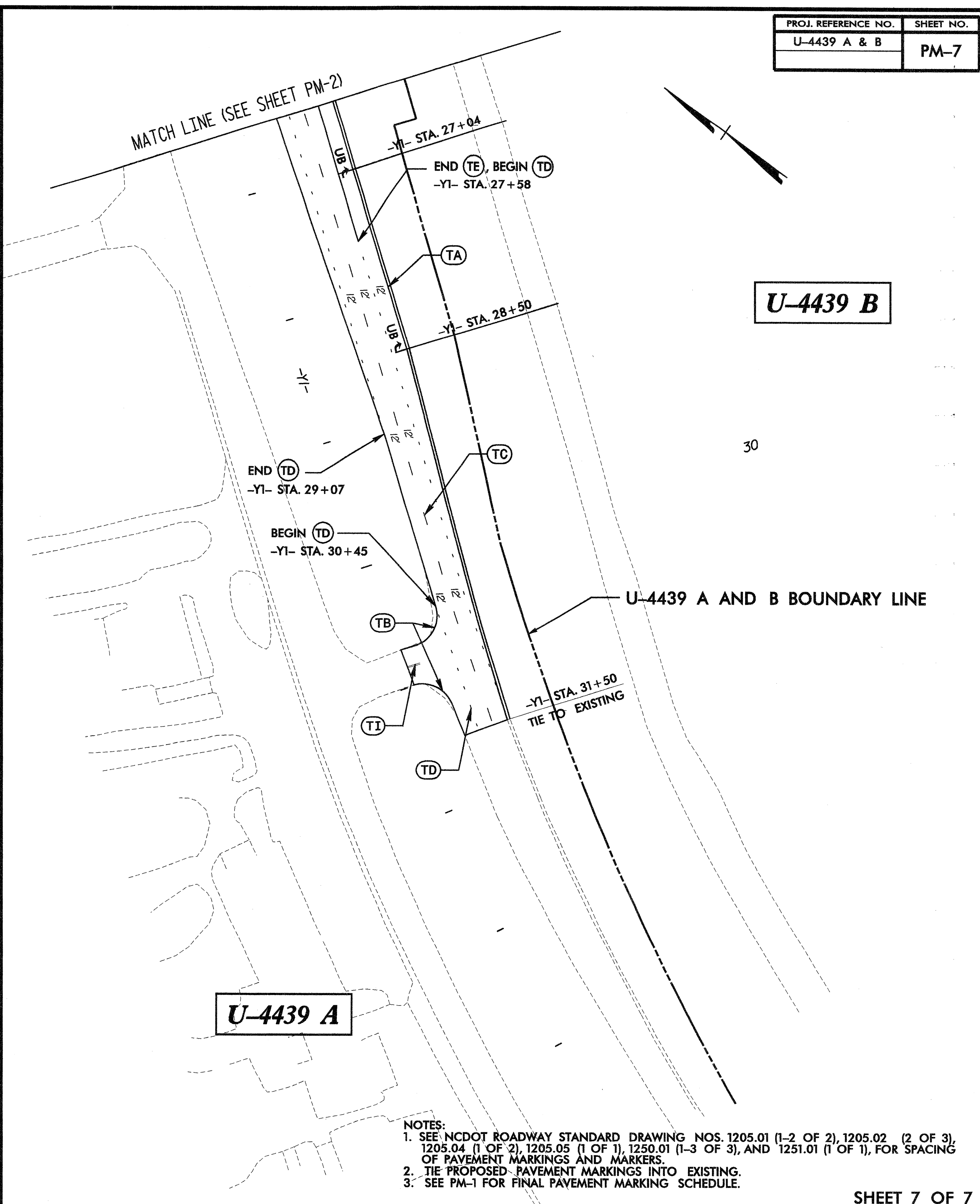
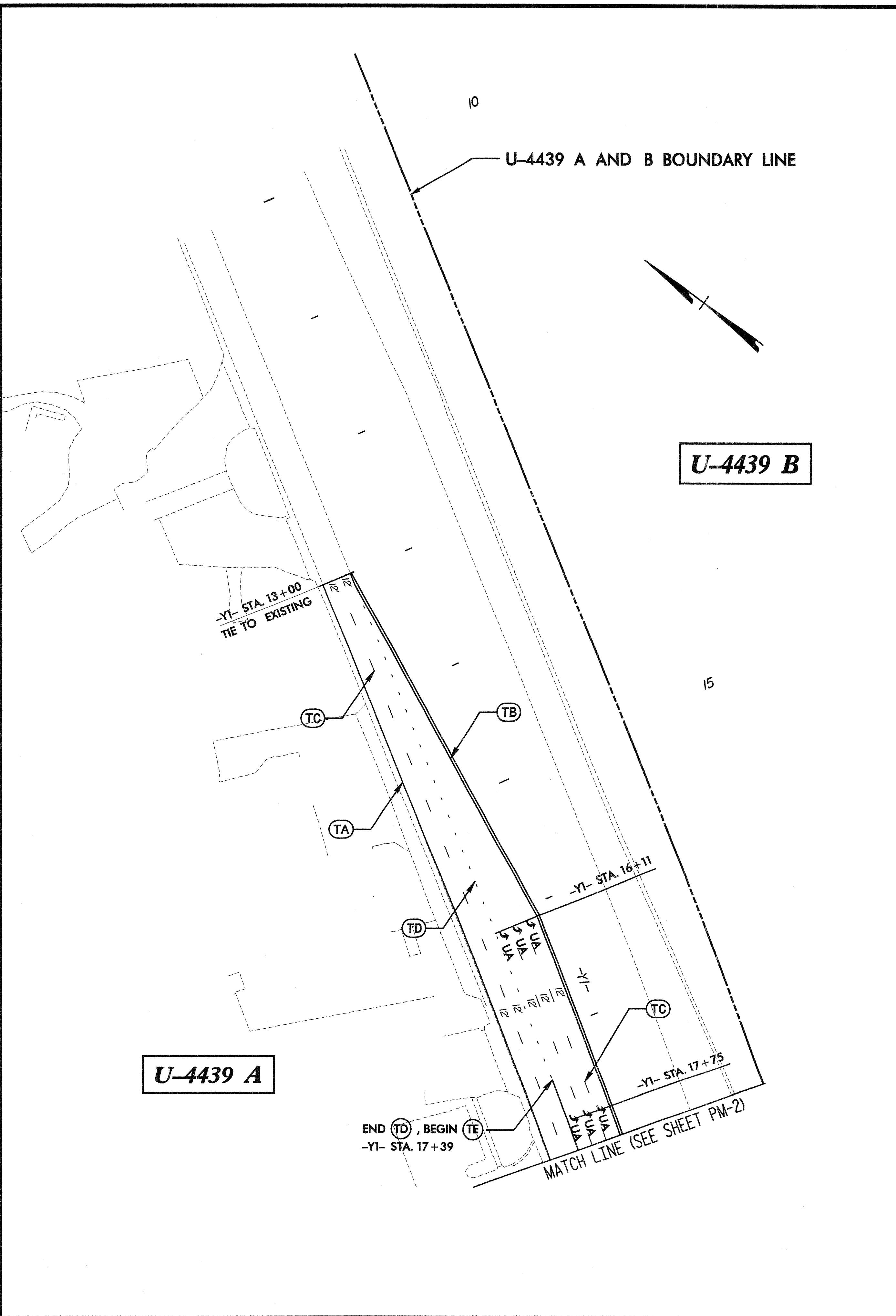


- NOTES:
- SEE NCDOT ROADWAY STANDARD DRAWING NOS. 1205.01 (1-2 OF 2), 1205.02 (2 OF 3), 1205.04 (1 OF 2), 1205.05 (1 OF 1), 1250.01 (1-3 OF 3), AND 1251.01 (1 OF 1), FOR SPACING OF PAVEMENT MARKINGS AND MARKERS.
  - TIE PROPOSED PAVEMENT MARKINGS INTO EXISTING.
  - SEE PM-1 FOR FINAL PAVEMENT MARKING SCHEDULE.

SHEET 6 OF 7

APPROVED <i>[Signature]</i> DATE: 02-01-06	<b>FINAL PAVEMENT MARKING PLANS</b>		REVISIONS	
			SCALE: NONE	
	DATE: 02-01-06			
	DWG. BY: GFK			
DESIGN BY: GFK				
REVIEWED BY: RWP				

02/02/2006 P:\JOBS\0659\041\U4439\TrafficControl\Top\100\U4439\_Top.pm06.dgn  
 03:16:34 PM



- NOTES:
- SEE NCDOT ROADWAY STANDARD DRAWING NOS. 1205.01 (1-2 OF 2), 1205.02 (2 OF 3), 1205.04 (1 OF 2), 1205.05 (1 OF 1), 1250.01 (1-3 OF 3), AND 1251.01 (1 OF 1), FOR SPACING OF PAVEMENT MARKINGS AND MARKERS.
  - TIE PROPOSED PAVEMENT MARKINGS INTO EXISTING.
  - SEE PM-1 FOR FINAL PAVEMENT MARKING SCHEDULE.

SHEET 7 OF 7

02/04/2005  
 P:\JOBS\0659\04\U4439\Tr-off\icConTr\on\Top\002\U4439\_top.pmd7.dgn  
 10:47:00 AM

APPROVED <i>[Signature]</i> DATE: 02-04-05	<h3>FINAL PAVEMENT MARKING PLANS</h3>		REVISIONS						
			SCALE: NONE DATE: 11-08-04 DWG. BY: GFK DESIGN BY: GFK REVIEWED BY: RWP		<table border="1"> <tr><td> </td><td> </td></tr> <tr><td> </td><td> </td></tr> <tr><td> </td><td> </td></tr> </table>				
CARD FILE U4439 TCP PM07.DGN									