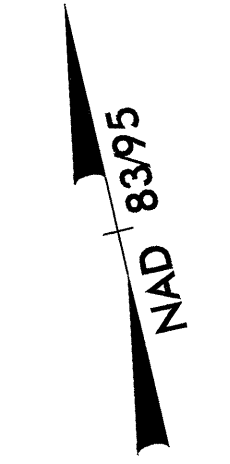


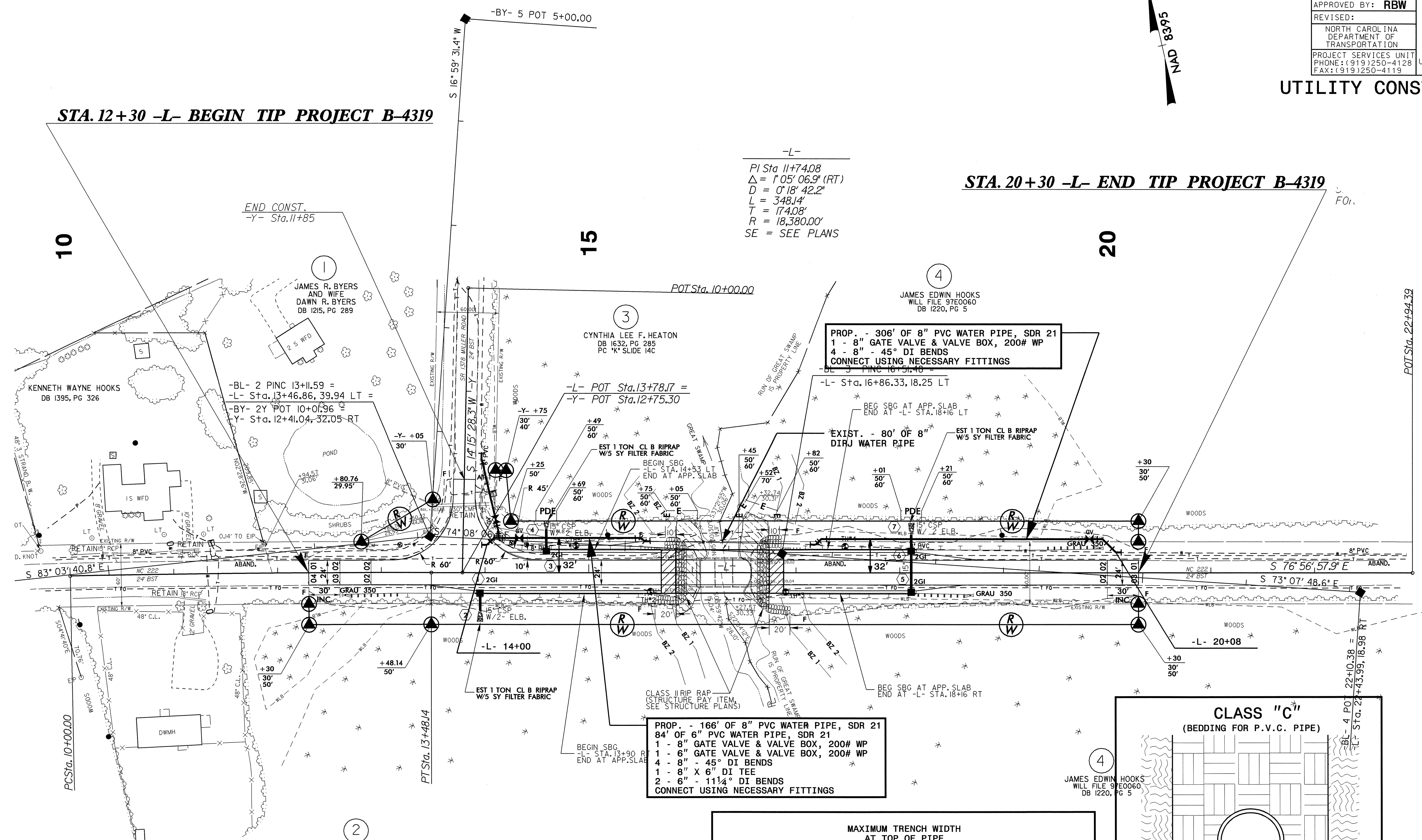
**UTILITY CONSTRUCTION**



**STA. 12+30 -L- BEGIN TIP PROJECT B-4319**

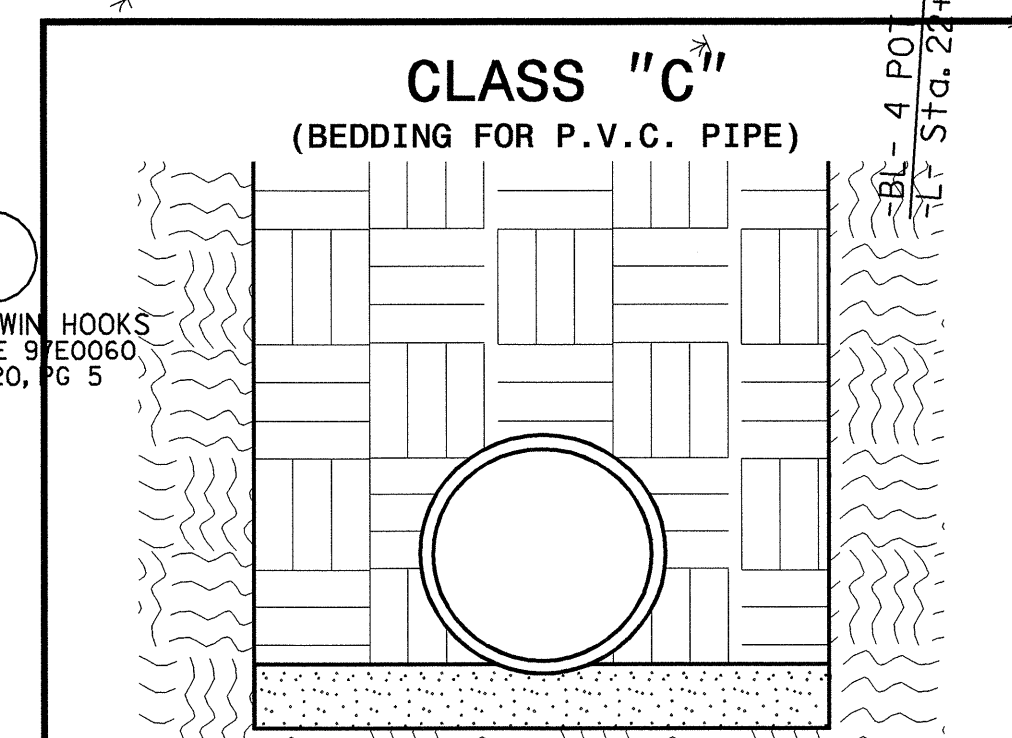
**STA. 20+30 -L- END TIP PROJECT B-4319**

-L-  
 PI Sta 11+74.08  
 $\Delta = 1^{\circ}05'06.9"$  (RT)  
 $D = 0'18'42.2"$   
 $L = 348.14'$   
 $T = 174.08'$   
 $R = 18,380.00'$   
 SE = SEE PLANS



PROP. - 306' OF 8" PVC WATER PIPE, SDR 21  
 1 - 8" GATE VALVE & VALVE BOX, 200# WP  
 4 - 8" - 45° DI BENDS  
 CONNECT USING NECESSARY FITTINGS

PROP. - 166' OF 8" PVC WATER PIPE, SDR 21  
 84' OF 6" PVC WATER PIPE, SDR 21  
 1 - 8" GATE VALVE & VALVE BOX, 200# WP  
 1 - 6" GATE VALVE & VALVE BOX, 200# WP  
 4 - 8" - 45° DI BENDS  
 1 - 8" X 6" DI TEE  
 2 - 6" - 111° DI BENDS  
 CONNECT USING NECESSARY FITTINGS



MAXIMUM TRENCH WIDTH AT TOP OF PIPE			
NOMINAL PIPE SIZE (INCHES)	TRENCH WIDTH (INCHES)	NOMINAL PIPE SIZE (INCHES)	TRENCH WIDTH (INCHES)
4	28	20	44
6	30	24	48
8	32	30	54
10	34	36	60
12	36	42	66
14	38	48	72
16	40	54	78
18	42		

PIPE BEDDED IN LOOSE MATERIAL, LIGHTLY TAMPED WITH A MINIMUM OF 6" UNDER PIPE. TRENCH BACKFILLED IN LOOSE 6" LAYERS COMPACTED TO TOP OF TRENCH USING LOCAL EXCAVATED MATERIAL, IF APPROVED BY THE ENGINEER, OR SELECT MATERIAL. ALL MATERIAL SHALL BE FREE OF ROCKS, FOREIGN MATERIAL, AND FROZEN EARTH. COMPACTION SHALL BE TO APPROX. 95% DENSITY IN ACCORDANCE WITH AASHTO T-99 AS MODIFIED BY THE DEPARTMENT OF TRANSPORTATION.

5/14/99  
 24-OCT-2005 16:44  
 r:\utilities\psh\d4319\ut\_4\_uc2\_psh.dgn