

PROJECT REFERENCE NO. B-4319	SHEET NO. 4
RW SHEET NO.	
ROADWAY DESIGN ENGINEER NORTH CAROLINA PROFESSIONAL SEAL 024926 WILLIAM E. McCOLLUM	HYDRAULICS ENGINEER NORTH CAROLINA PROFESSIONAL SEAL 12575 PAUL W. LEATHER

BRIDGE APPROACH SLAB
FOR -L- PROFILE SEE SHEET 5
UNCLASSIFIED STRUCTURE EXCAVATION (STRUCTURE PAY ITEM)
SEE SHEETS S-1 THRU S-18 FOR STRUCTURE PLANS

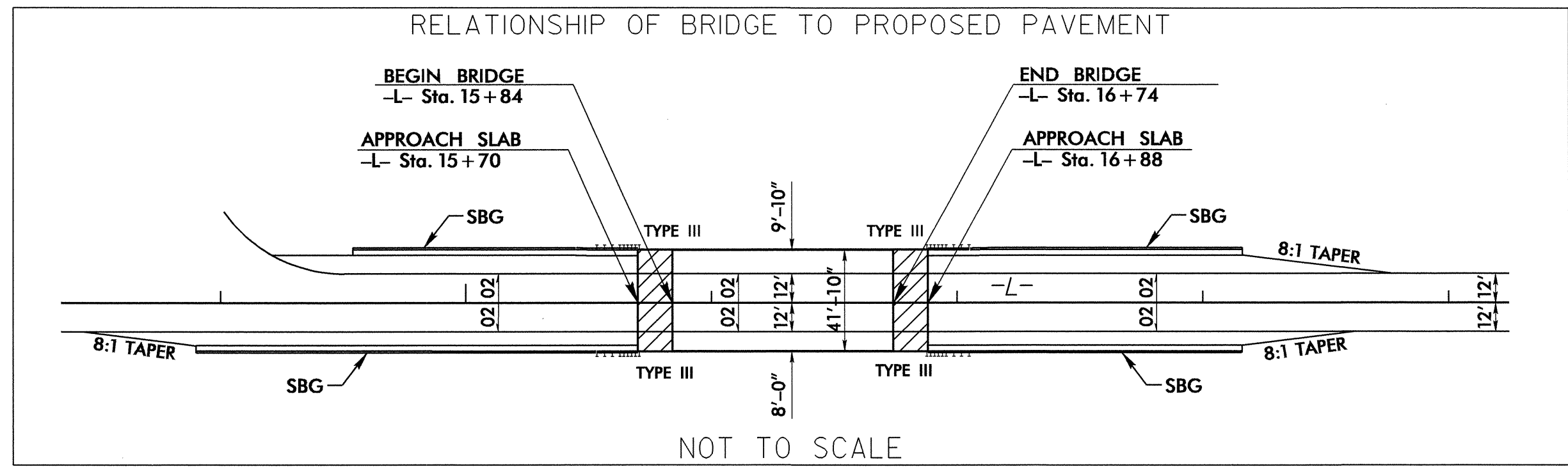
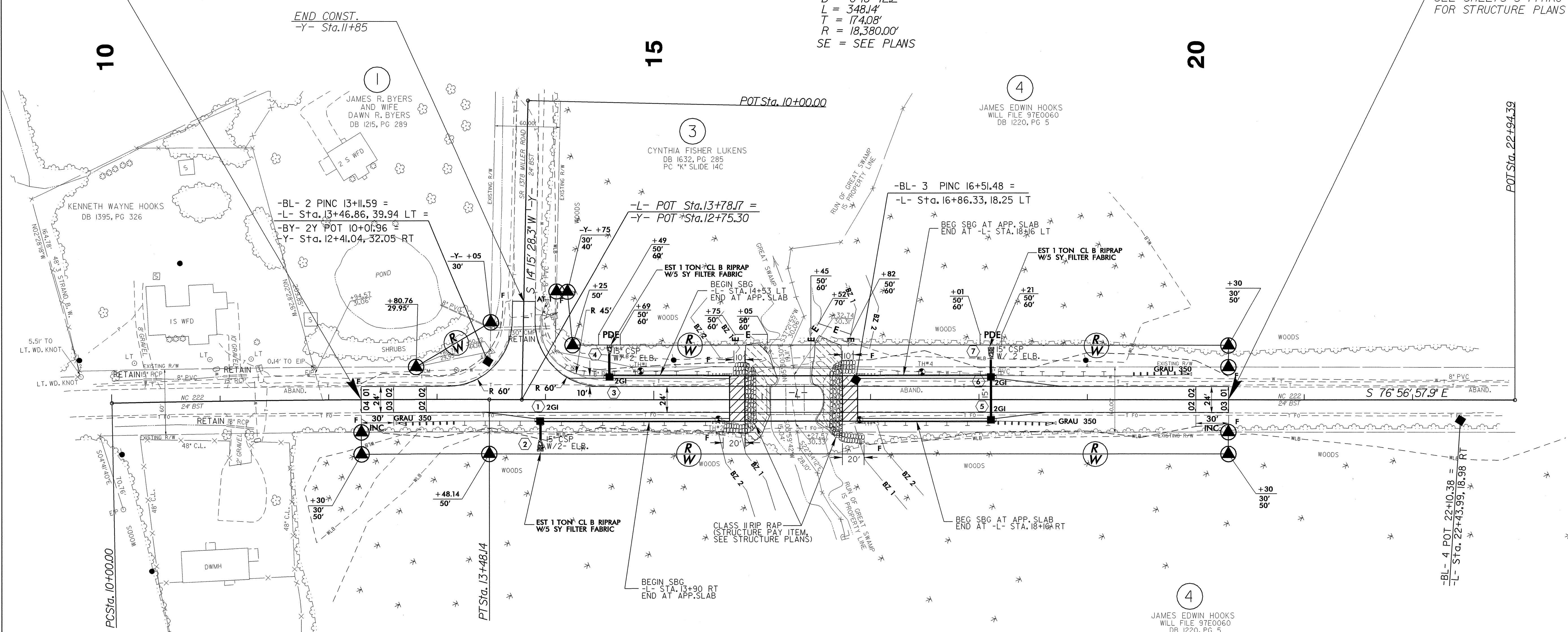
8/17/99

REVISIONS

STA. 12+30 -L- BEGIN TIP PROJECT B-4319

STA. 20+30 -L- END TIP PROJECT B-4319

-L-
PI Sta. 11+74.08
 $\Delta = 1^{\circ}05'06.9''$ (RT)
 $D = 0^{\circ}18'42.2''$
 $L = 348.14'$
 $T = 174.08'$
 $R = 18,380.00'$
SE = SEE PLANS



04-JAN-2006 08:59
t:\p\edward\pco\4319_rdy_s4psh.dgn
\$\$\$\$\$USERNAM\$\$\$\$\$