

STATE OF NORTH CAROLINA
DEPT. OF TRANSPORTATION
DIVISION OF HIGHWAYS
RALEIGH, N.C.

7-06
ENGLISH STANDARD DRAWING FOR
TEMPORARY SHOULDER CLOSURES

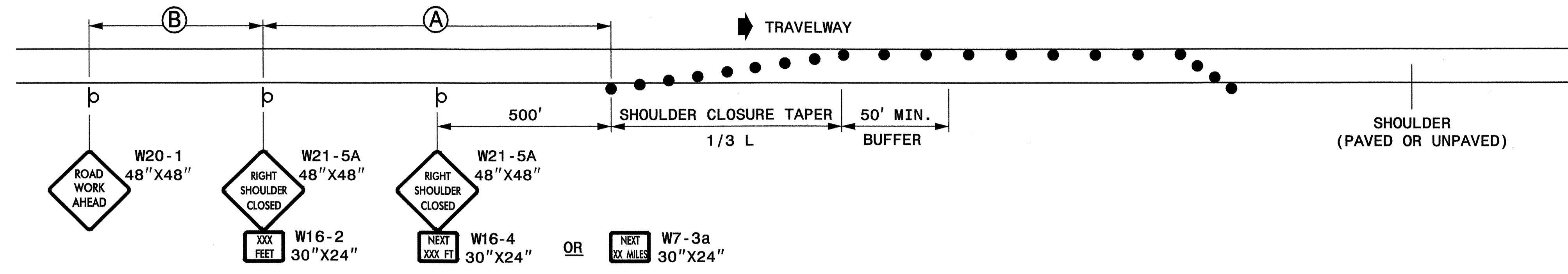
SHEET 1 OF 1
1101D04

7-06
STATE OF NORTH CAROLINA
DEPT. OF TRANSPORTATION
DIVISION OF HIGHWAYS
RALEIGH, N.C.

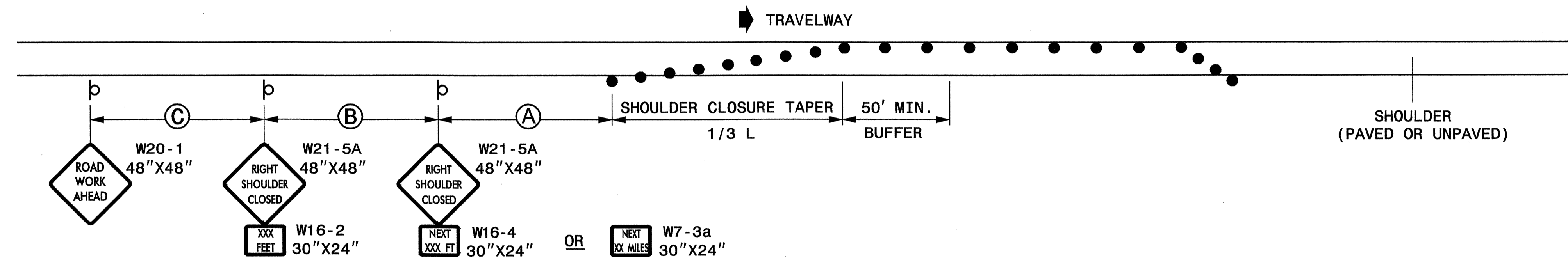
ENGLISH STANDARD DRAWING FOR
TEMPORARY SHOULDER CLOSURES

SHEET 1 OF 1
1101D04

SHOULDER CLOSURE ON CONTROLLED ACCESS FACILITIES - 55 MPH OR ABOVE

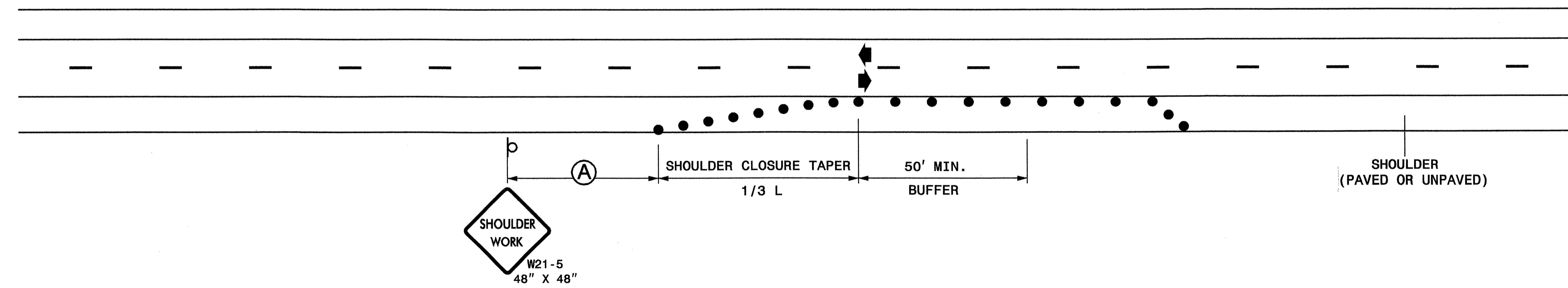


SHOULDER CLOSURE ON OTHER DIVIDED FACILITIES - 55 MPH OR LESS



SHOULDER CLOSURE ON TWO-LANE, TWO-WAY ROADWAYS

(SEE NOTE 5)



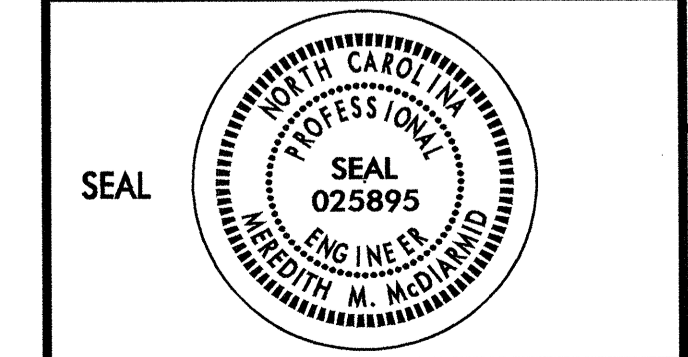
LEGEND

- DRUM
- ⊥ STATIONARY OR PORTABLE SIGN
- ➔ DIRECTION OF TRAFFIC FLOW

GENERAL NOTES

- 1- PLACE SHOULDER CLOSURE SIGNS ON THE SAME SIDE AS THE SHOULDER THAT IS CLOSED.
- 2- PLACE DRUMS IN THE SHOULDER TAPER AT THE MAXIMUM SPACING EQUAL IN FEET TO THE POSTED SPEED LIMIT. THE MAXIMUM SPACING OF DRUMS ALONG THE WORK AREA IS EQUAL IN FEET TO 2 TIMES THE POSTED SPEED LIMIT.
- 3- USE STATIONARY SIGNS FOR LONG TERM OPERATIONS (LONGER THAN 3 DAYS).
- 4- REFER TO STD. 1101.11 SHEETS 1, 3, & 4, FOR "L" DISTANCE, AND SIGN SPACING.
- 5- THE TWO-LANE, TWO-WAY DRAWING MAY BE APPLIED TO UNDIVIDED, MULTI-LANE FACILITIES.

APPROVED: *M. M. M.* DATE: 11/9/05



**REPLACEMENT DETAIL
FOR RSD 1101.04**

SCALE: NONE		REVISIONS
DATE: 11-08-05		
DWG. BY: MRM		
DESIGN BY: JPG		
REVIEWED BY: MMM		