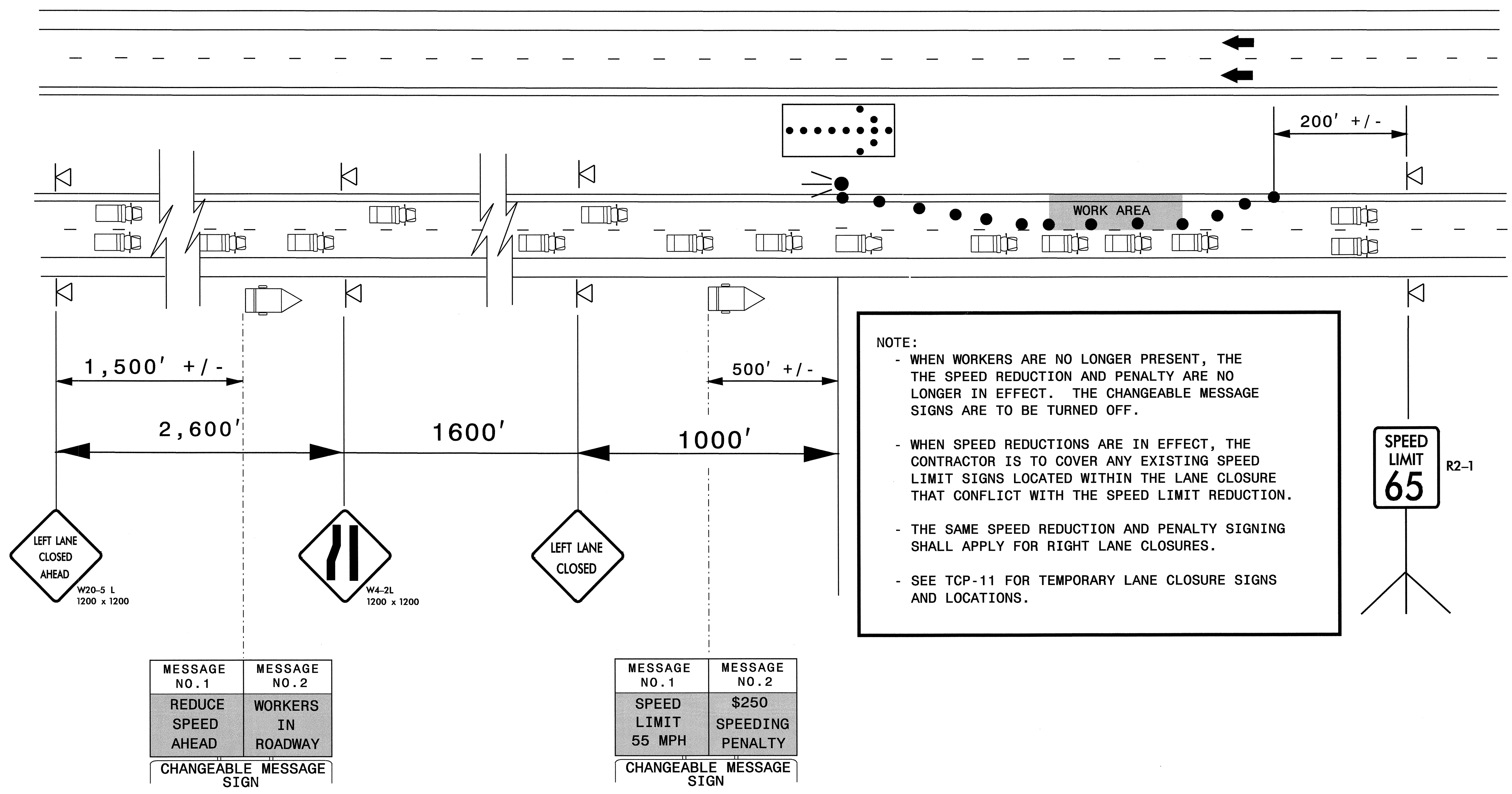


TYPICAL SPEED REDUCTION APPLICATION FOR LANE CLOSURES



NOTE:

- WHEN WORKERS ARE NO LONGER PRESENT, THE SPEED REDUCTION AND PENALTY ARE NO LONGER IN EFFECT. THE CHANGEABLE MESSAGE SIGNS ARE TO BE TURNED OFF.
- WHEN SPEED REDUCTIONS ARE IN EFFECT, THE CONTRACTOR IS TO COVER ANY EXISTING SPEED LIMIT SIGNS LOCATED WITHIN THE LANE CLOSURE THAT CONFLICT WITH THE SPEED LIMIT REDUCTION.
- THE SAME SPEED REDUCTION AND PENALTY SIGNING SHALL APPLY FOR RIGHT LANE CLOSURES.
- SEE TCP-11 FOR TEMPORARY LANE CLOSURE SIGNS AND LOCATIONS.

MESSAGE NO. 1	MESSAGE NO. 2
REDUCE SPEED AHEAD	WORKERS IN ROADWAY
CHANGEABLE MESSAGE SIGN	

MESSAGE NO. 1	MESSAGE NO. 2
SPEED LIMIT 55 MPH	\$250 SPEEDING PENALTY
CHANGEABLE MESSAGE SIGN	

14-NOV-2005 15:42
 \\lets-ccfs03\147119\Traffic\TrafficControl\top\14711_tc_top10_cms_speed_reduction.dgn
 pseyvmore AT WZTC206427

APPROVED:	DATE: 11/16/05	"TEMPORARY" SPEED LIMIT REDUCTIONS FOR LANE CLOSURES	
SCALE: NONE	DATE: 01/05/05		REVISIONS
DWG. BY: SK	DESIGN BY: SK		
REVIEWED BY: MMM			