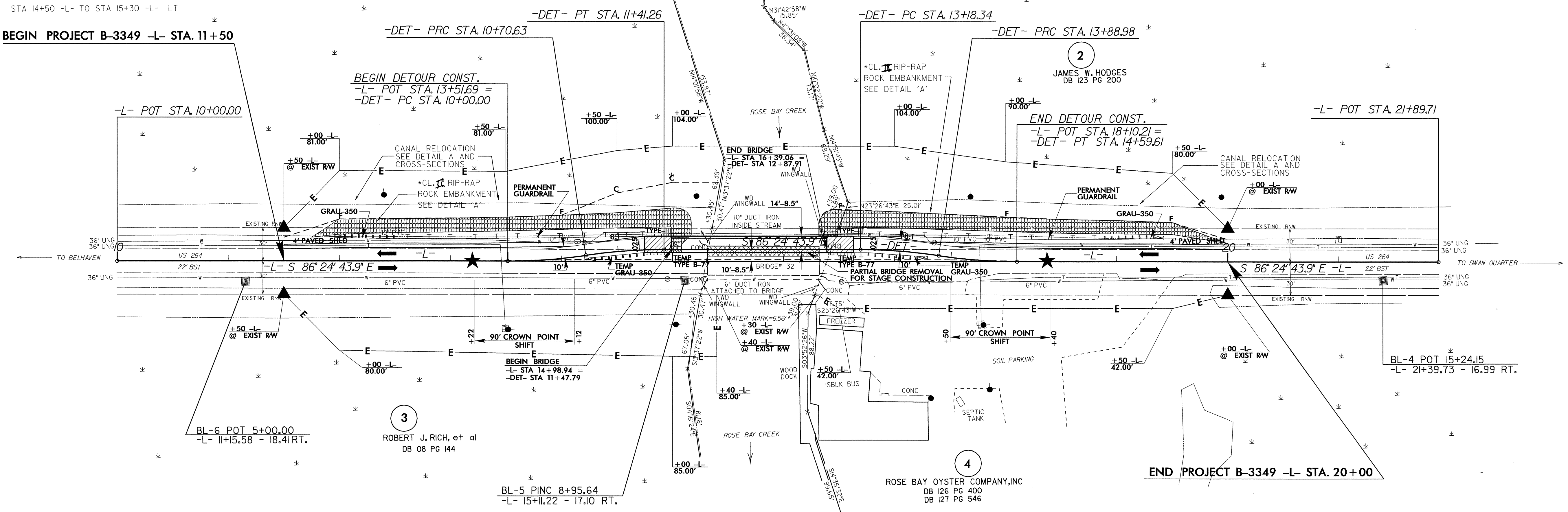
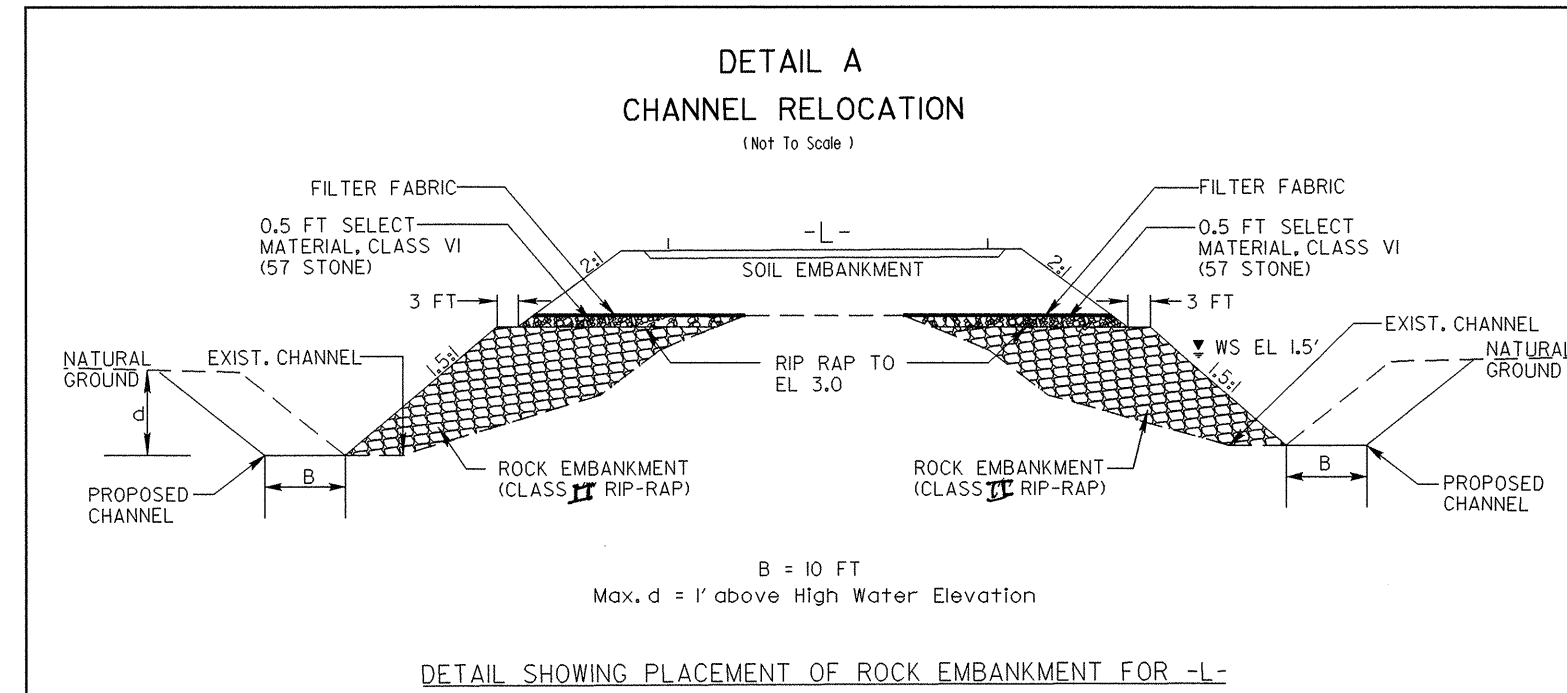


7/2/99

REVISIONS

PROJECT REFERENCE NO. B-3349	SHEET NO. 4A
RW SHEET NO.	
ROADWAY DESIGN ENGINEER 	HYDRAULICS ENGINEER
-DETOUR- Vdet = 35 MPH	

-DETOUR-			
PI Sta 10+35.38 Δ = 8' 42" 11.2" (LT) D = 12' 19" 18.0" L = 70.63' T = 35.38' R = 465.00' SE = SEE PLANS	PI Sta 11+06.02 Δ = 8' 42" 11.2" (RT) D = 12' 19" 18.0" L = 70.63' T = 35.38' R = 465.00' SE = SEE PLANS	PI Sta 13+53.73 Δ = 8' 42" 11.2" (RT) D = 12' 19" 18.0" L = 70.63' T = 35.38' R = 465.00' SE = SEE PLANS	PI Sta 14+24.36 Δ = 8' 42" 11.2" (LT) D = 12' 19" 18.0" L = 70.63' T = 35.38' R = 465.00' SE = SEE PLANS



NOTE: THE DETOUR ALIGNMENT WILL USE THE PROJECTION OF THE -L- GRADE AT THE .025 SUPER RATE FOR THE DETOUR GRADE.

DESIGN EXCEPTION REQUIRED FOR -L- LINE SHOULDER WIDTH.

★ DENOTES SIGNAL REQUIRED FOR ONE LANE TWO-WAY DETOUR OPERATION SEE SHEETS TCP-1 THRU TCP-10 FOR DETOUR OPERATION SEE SHEETS S-1 THRU S-44 FOR STRUCTURE PLANS

63-FEB-2005 10:47
DWGardner rd-07oce34