

NOTES

STIRRUPS AND U1 BARS IN CAP MAY BE SHIFTED AS NECESSARY TO CLEAR DOWELS.

ALL REINFORCING STEEL AND BAR SUPPORTS SHALL BE EPOXY COATED ACCORDING TO THE STANDARD SPECIFICATIONS.

CLASS AA CONCRETE SHALL BE USED IN END BENT CAP.

THE LATERAL GUIDE AT EACH END OF THE CAP IS NOT TO BE POURED UNTIL AFTER THE CORED SLAB UNITS IN THAT STAGE ARE IN PLACE.

THE CONTRACTOR'S ATTENTION IS CALLED TO THE FACT THAT THE #9 "B" BAR LENGTHS IN EACH STAGE OF THE CAP MAY NEED TO BE ADJUSTED DUE TO THE TYPE OF MECHANICAL COUPLER CHOSEN BY THE CONTRACTOR. NO ADDITIONAL PAYMENT WILL BE MADE FOR ANY ADJUSTMENTS REQUIRED. THE #9 B7 BARS ARE DETAILED WITH 9" OF EXTRA LENGTH.

FOR MECHANICAL COUPLERS, SEE MECHANICAL BUTT SPLICES FOR REINFORCING STEEL SPECIAL PROVISIONS.

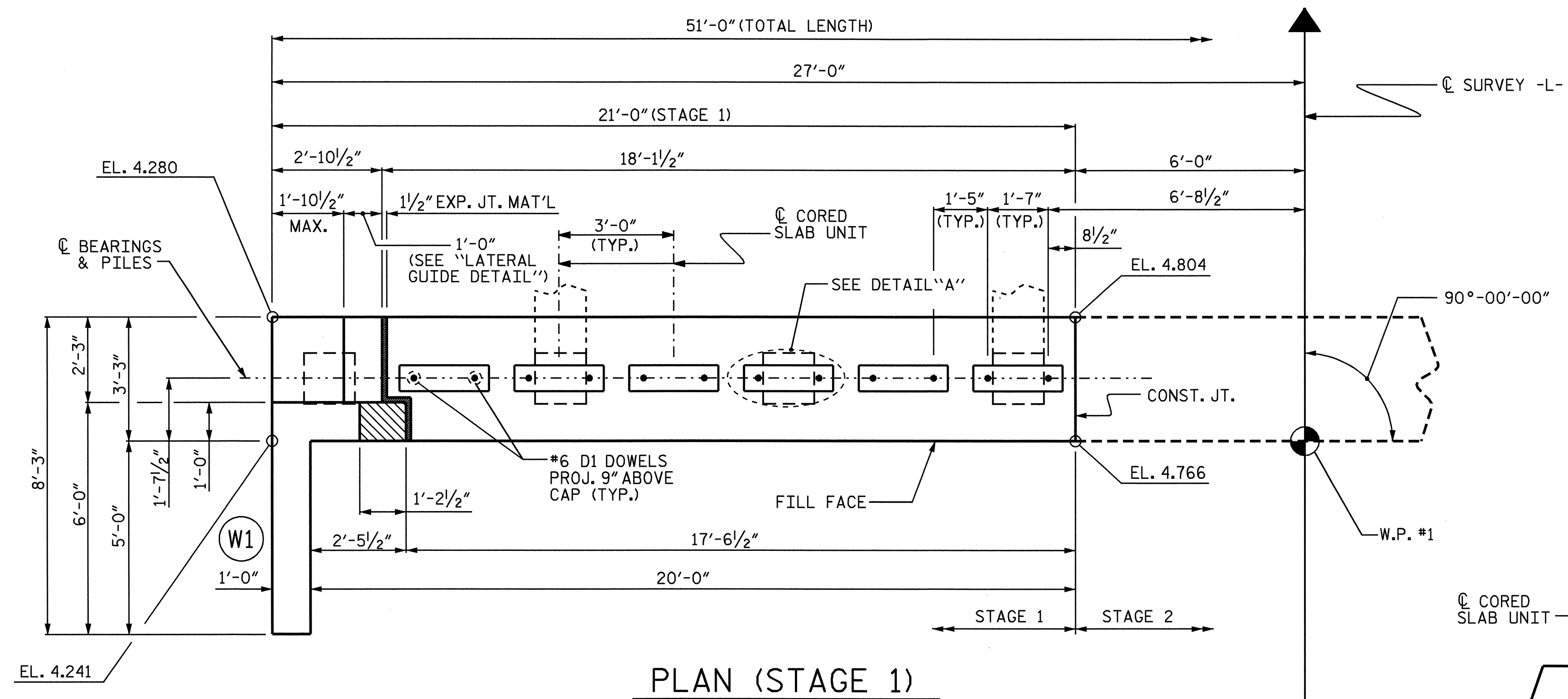
MECHANICAL COUPLERS SHALL BE USED TO JOIN THE #9 B1 BARS IN STAGE 1 WITH THE #9 B7 BARS IN STAGE 2. THE LOCATION OF THE COUPLERS SHALL NOT EXTEND BEYOND THE STAGE 1 CONSTRUCTION JOINT.

MECHANICAL COUPLERS TO BE PLUGGED DURING POURING OF THE END BENT CAP AS RECOMMENDED BY THE MANUFACTURER.

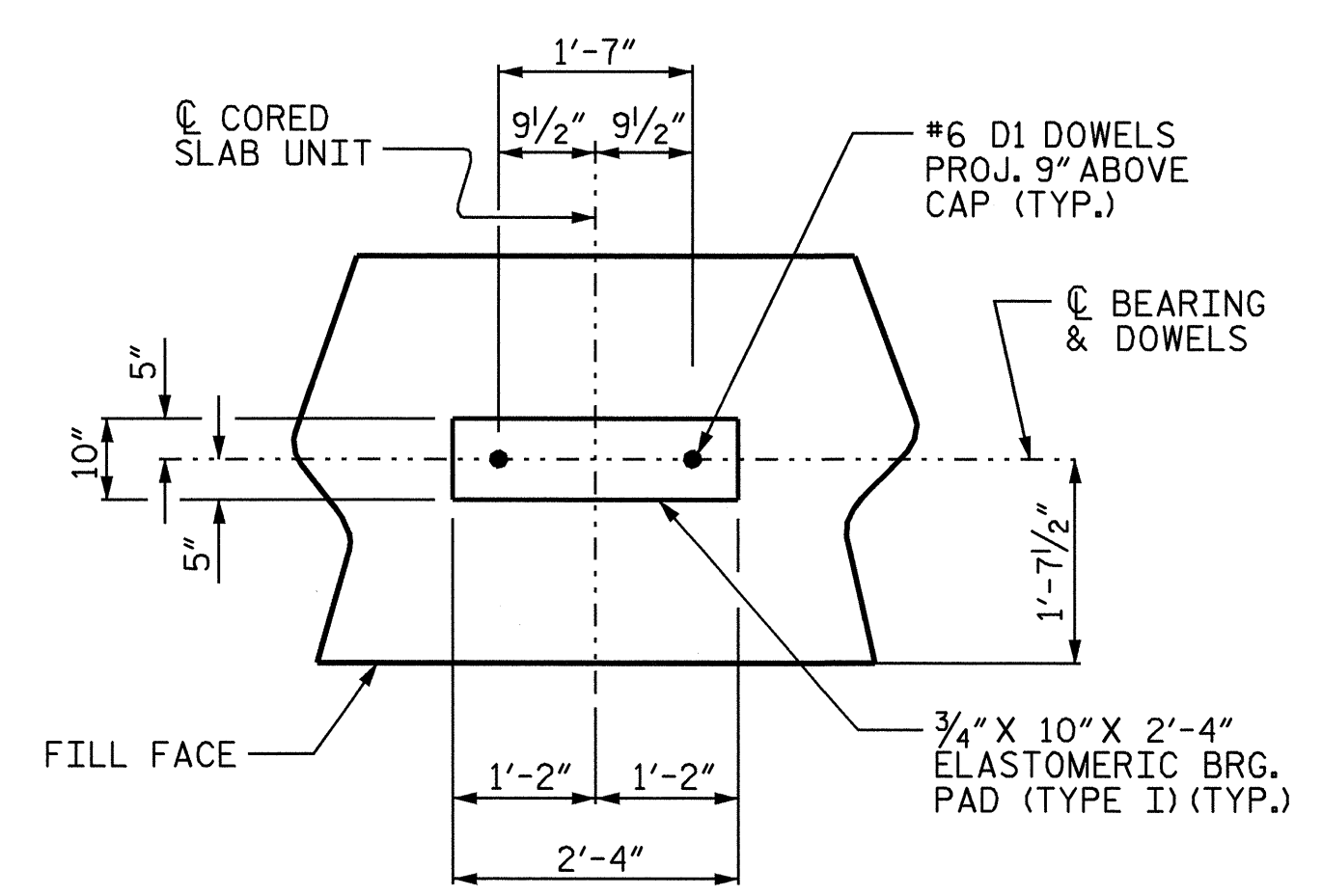
THE CONCRETE IN THE SHADED AREA OF THE WING SHALL BE POURED AFTER THE PARAPET AND END POST ARE CAST IF SLIP FORMING IS USED.

CONCRETE DISPLACED BY 16" PRESTRESSED CONCRETE PILES HAS BEEN DEDUCTED FROM THE CONCRETE QUANTITY.

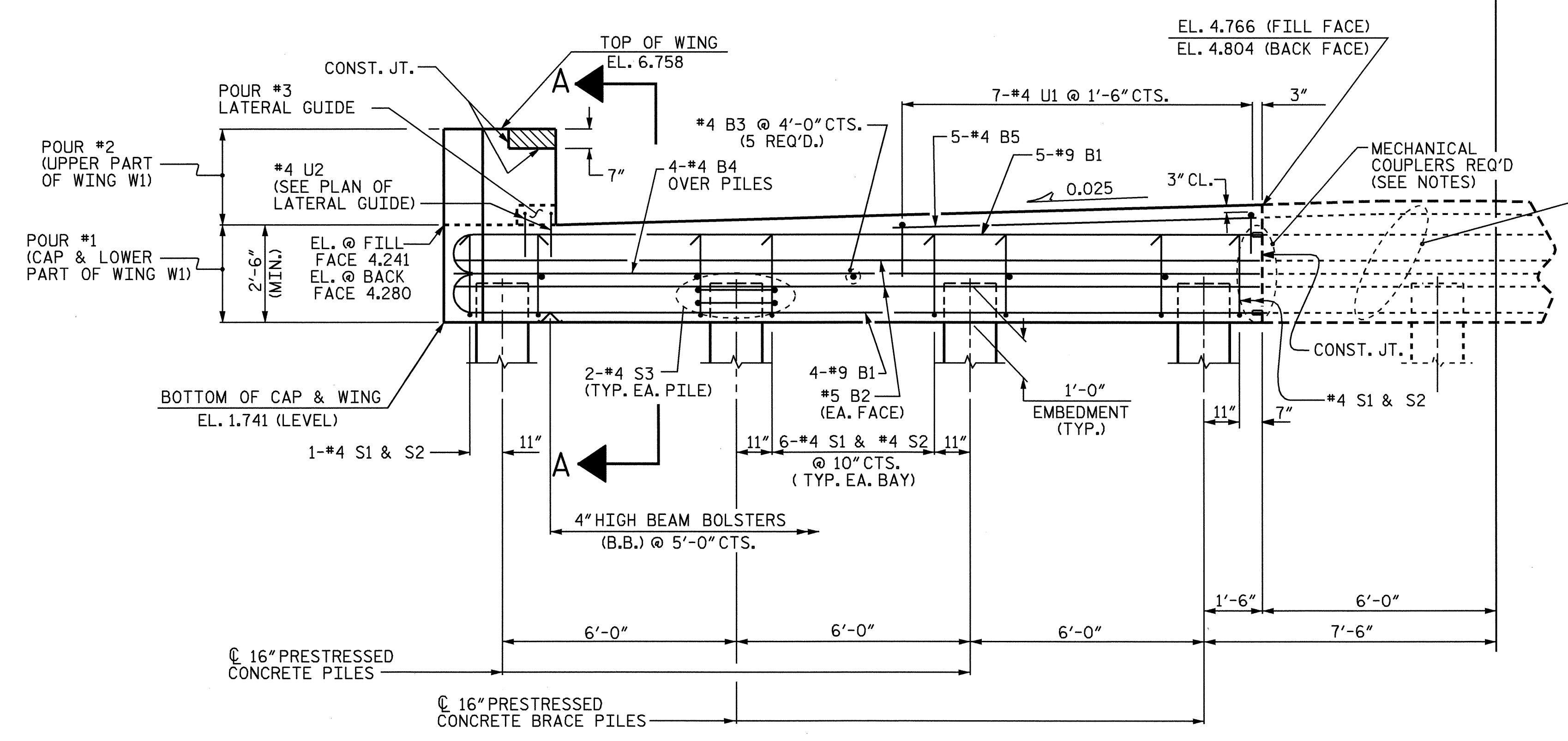
THE CONTRACTOR SHALL PROVIDE FOR INSTALLATION OF THE 4" DIAMETER DRAIN PIPE THROUGH THE WING WALL AS REQUIRED FOR REINFORCED BRIDGE APPROACH FILLS, SEE THE ROADWAY PLANS. REINFORCING STEEL IN THE WING WALL MAY BE SHIFTED AS NECESSARY TO CLEAR THE DRAIN PIPE.



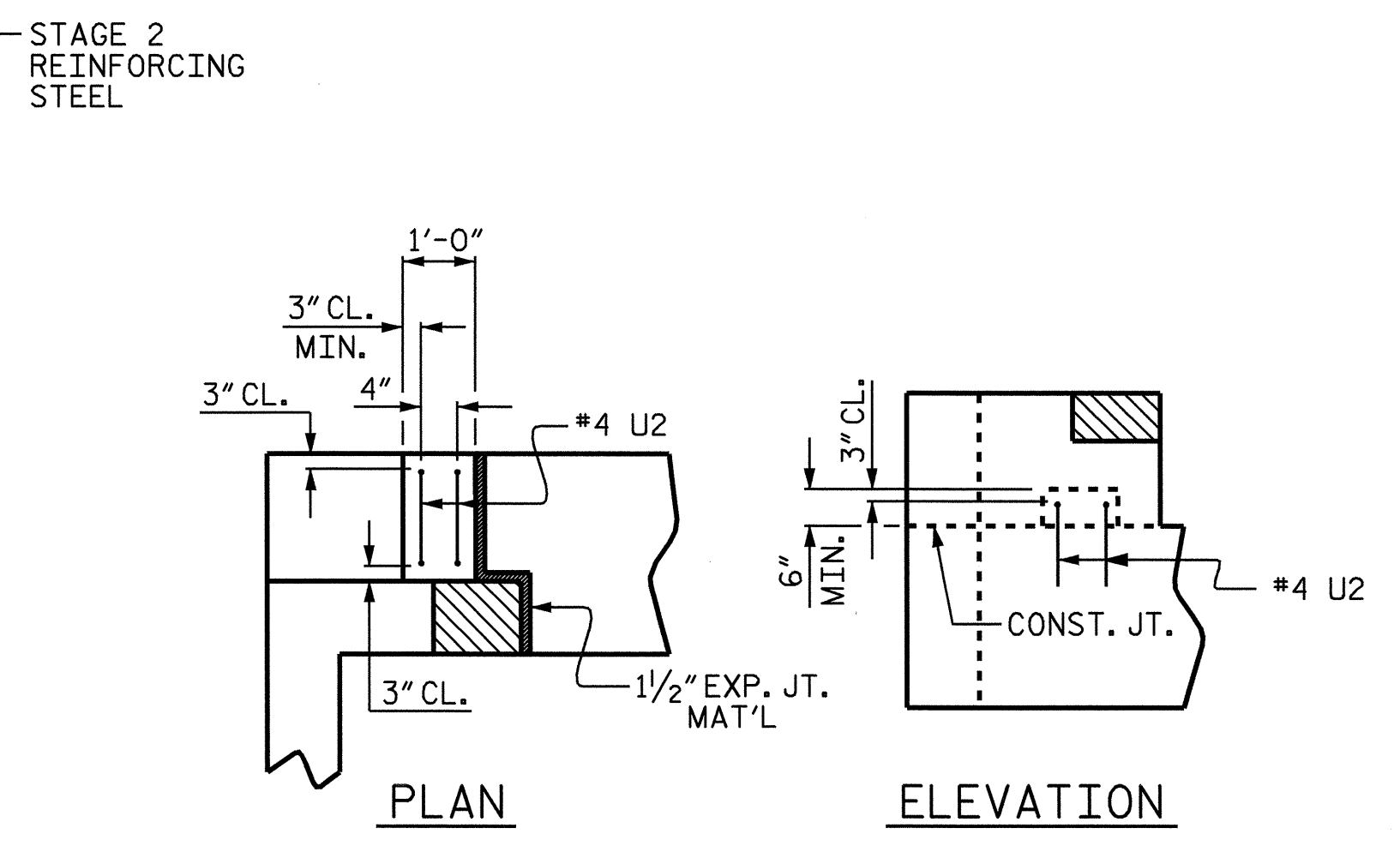
PLAN (STAGE 1)



DETAIL "A"
(TYPICAL EA. STAGE)



ELEVATION (STAGE 1)

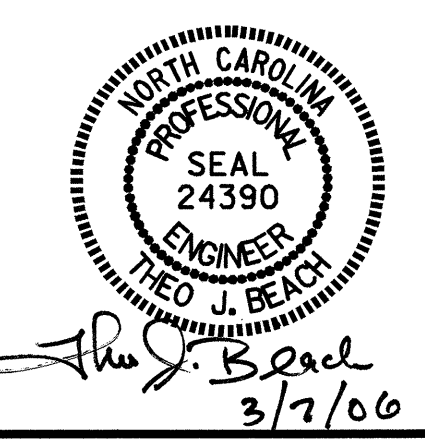


LATERAL GUIDE DETAIL
(SIMILAR EACH STAGE)

PROJECT NO. B-3349
HYDE COUNTY
 STATION: 15+69.00 -L-
 SHEET 1 OF 4

STATE OF NORTH CAROLINA
 DEPARTMENT OF TRANSPORTATION
 RALEIGH

SUBSTRUCTURE
 END BENT No. 1
 (STAGE 1)



DRAWN BY : S.B. WILLIAMS DATE : 11-03
 CHECKED BY : MIKE BRITT DATE : 1-04

REVISIONS					SHEET NO.
NO.	BY:	DATE:	NO.	BY:	DATE:
1			3		
2			4		

TOTAL SHEETS: 44