

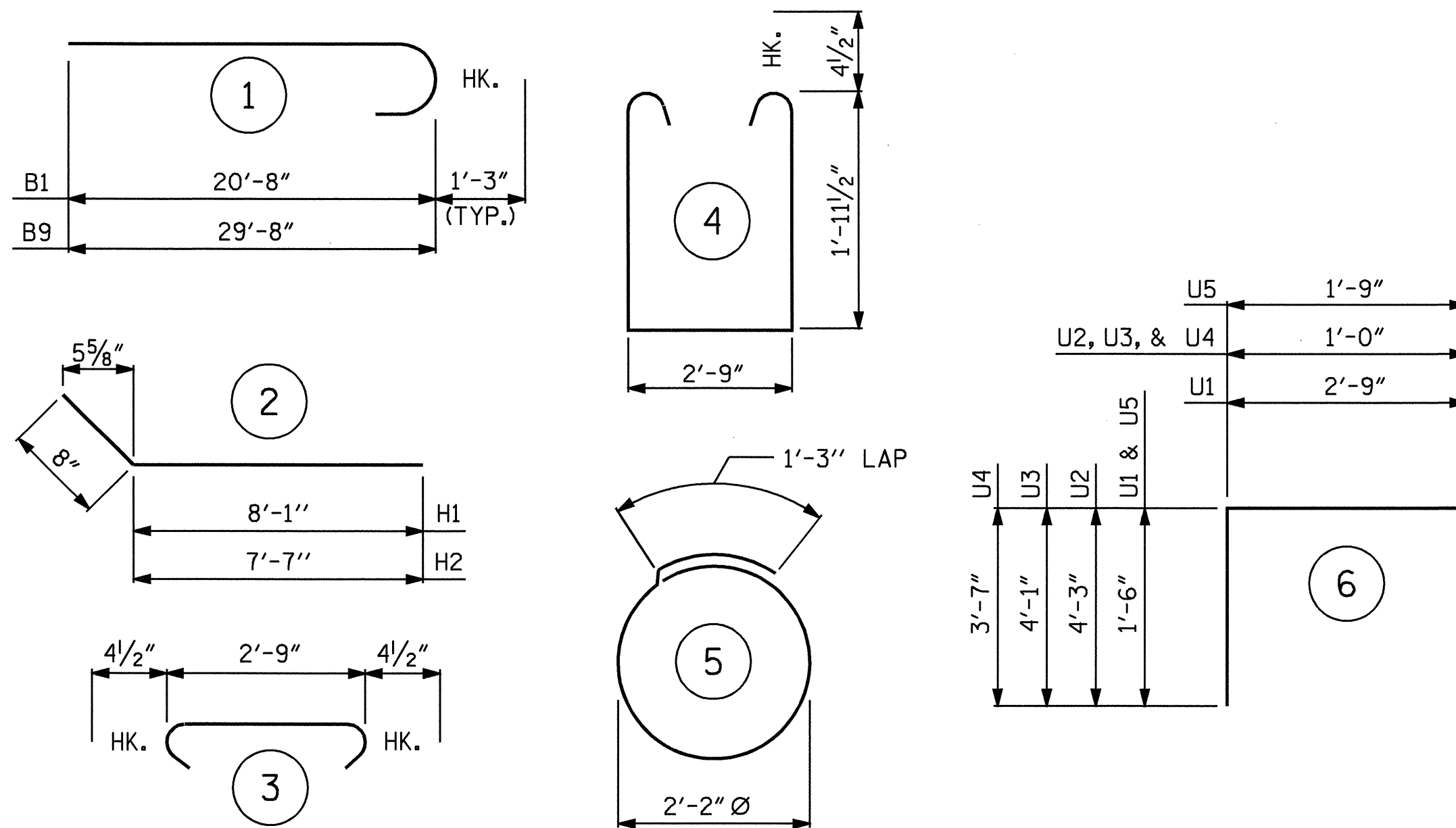
BAGGED STONE AND PIPE SHALL BE PLACED IMMEDIATELY AFTER COMPLETION OF END BENT EXCAVATION. PIPE MAY BE EITHER CONCRETE, CORRUGATED STEEL, CORRUGATED ALUMINUM ALLOY, OR CORRUGATED PLASTIC. PERFORATED PIPE WILL NOT BE ALLOWED.

BAGGED STONE SHALL REMAIN IN PLACE UNTIL THE ENGINEER DIRECTS THAT IT BE REMOVED. THE CONTRACTOR SHALL REMOVE AND DISPOSE OF SILT ACCUMULATIONS AT BAGGED STONE WHEN SO DIRECTED BY THE ENGINEER. BAGS SHALL BE REMOVED AND REPLACED WHENEVER THE ENGINEER DETERMINES THAT THEY HAVE DETERIORATED AND LOST THEIR EFFECTIVENESS.

NO SEPARATE PAYMENT WILL BE MADE FOR THIS WORK AND THE ENTIRE COST OF THIS WORK SHALL BE INCLUDED IN THE UNIT CONTRACT PRICE BID FOR THE SEVERAL PAY ITEMS.

TEMPORARY DRAINAGE AT END BENT

BAR TYPES



ALL BAR DIMENSIONS ARE OUT TO OUT.

BILL OF MATERIAL

END BENT No. 2

STAGE 1						STAGE 2					
BAR	No.	SIZE	TYPE	LENGTH	WEIGHT	BAR	No.	SIZE	TYPE	LENGTH	WEIGHT
B1	9	9	1	21'-11"	671	B5	8	4	STR	2'-9"	15
B2	4	5	STR	20'-9"	87	B6	4	5	STR	9'-10"	41
B3	4	4	STR	20'-9"	55	B7	2	5	STR	8'-10"	18
B4	5	4	STR	11'-5"	38	B8	9	9	STR	9'-3"	283
B5	5	4	STR	2'-9"	9	B9	9	9	1	30'-11"	946
B6	4	5	STR	9'-10"	41	B10	4	5	STR	29'-9"	124
B7	2	5	STR	8'-10"	18	B11	4	4	STR	29'-3"	79
B8	4	5	STR	8'-10"	18	B12	5	4	STR	20'-5"	68
D1	12	6	STR	1'-6"	27	D1	18	6	STR	1'-6"	41
H1	6	4	2	8'-9"	35	H1	6	4	2	8'-9"	35
H2	6	4	2	8'-3"	33	H2	6	4	2	8'-3"	33
K1	3	4	STR	3'-6"	7	K1	3	4	STR	3'-6"	7
K2	3	4	STR	3'-2"	6	K2	3	4	STR	3'-2"	6
S1	20	4	4	7'-5"	99	S1	30	4	4	7'-5"	149
S2	20	4	3	3'-6"	47	S2	30	4	3	3'-6"	70
S3	8	4	5	8'-1"	43	S3	10	4	5	8'-1"	54
U1	8	4	6	5'-9"	31	U1	14	4	6	5'-9"	54
U2	20	5	6	9'-6"	198	U2	30	5	6	9'-6"	297
U3	1	5	6	9'-2"	10	U3	1	5	6	9'-2"	10
U4	9	5	6	8'-2"	77	U4	9	5	6	8'-2"	77
U5	2	4	6	4'-9"	6	U5	2	4	6	4'-9"	6
V1	25	4	STR	4'-5"	74	V1	25	4	STR	4'-5"	74

EPOXY COATED REINFORCING STEEL 1,612 LBS.

EPOXY COATED REINFORCING STEEL 2,487 LBS.

CLASS AA CONCRETE BREAKDOWN
 POUR #1 CAP & BOTT. OF WING W1 11.3 C.Y.
 POUR #2 TOP OF WING W1 1.0 C.Y.
 POUR #3 LATERAL GUIDE 0.1 C.Y.
 TOTAL CLASS AA CONCRETE 12.4 C.Y.

CLASS AA CONCRETE BREAKDOWN
 POUR #1 CAP & BOTT. OF WING W2 15.5 C.Y.
 POUR #2 TOP OF WING W2 1.0 C.Y.
 POUR #3 LATERAL GUIDE 0.1 C.Y.
 TOTAL CLASS AA CONCRETE 16.6 C.Y.

18" STEEL SHEET PILES
 No. PZ27 = 21 SQ. FT. = 1094.6
 No. BW2750 = 1 SQ. FT. = 52.1
 TOTAL No. = 22 SQ. FT. = 1146.7

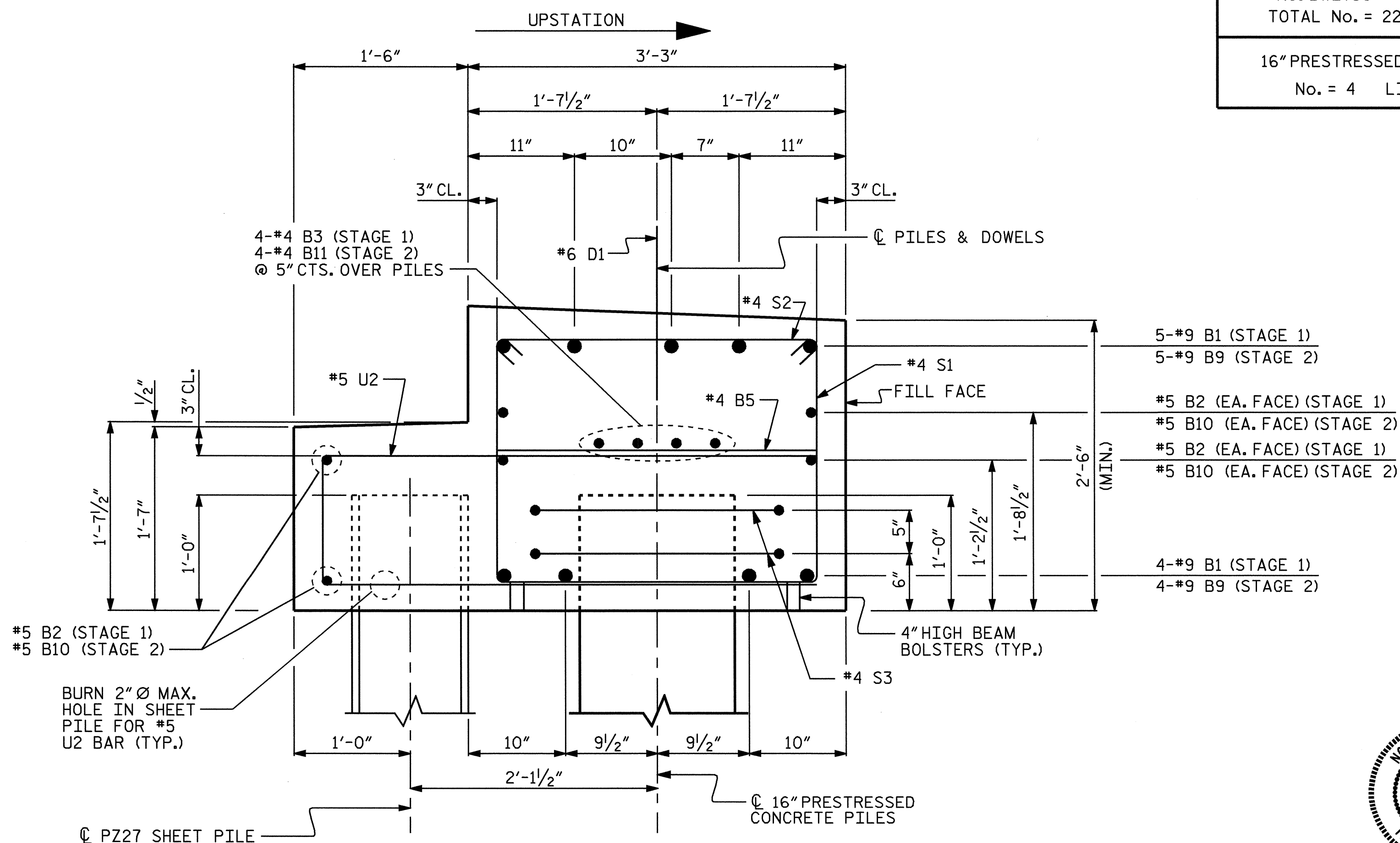
18" STEEL SHEET PILES
 No. PZ27 = 25 SQ. FT. = 1303.1
 No. BW2750 = 1 SQ. FT. = 52.1
 TOTAL No. = 26 SQ. FT. = 1355.2

16" PRESTRESSED CONCRETE PILES
 No. = 4 LIN. FT. = 280.0

16" PRESTRESSED CONCRETE PILES
 No. = 5 LIN. FT. = 350.0

TOTAL QUANTITIES (END BENT No. 2)

ITEM	STAGE 1	STAGE 2	TOTAL
EPOXY COATED REINFORCING STEEL	1,612 LBS.	2,487 LBS.	4,099 LBS.
CLASS AA CONCRETE	12.4 C.Y.	16.6 C.Y.	29.0 C.Y.
18" STEEL SHEET PILES	No. 22 SQ. FT. 1146.7	No. 26 SQ. FT. 1355.2	No. 48 SQ. FT. 2501.9
16" PRESTRESSED CONCRETE PILES	No. 4 LIN. FT. 280.0	No. 5 LIN. FT. 350.0	No. 9 LIN. FT. 630.0



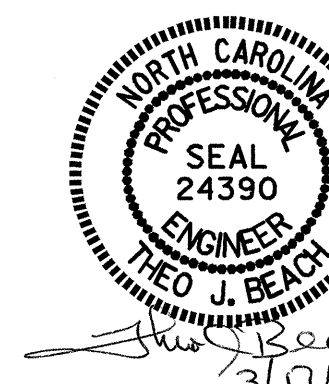
SECTION A-A

PROJECT NO. B-3349
 HYDE COUNTY
 STATION: 15+69.00 -L-

SHEET 6 OF 6

STATE OF NORTH CAROLINA
 DEPARTMENT OF TRANSPORTATION
 RALEIGH

SUBSTRUCTURE
 END BENT No. 2



DRAWN BY: P.C. BREWER DATE: 2/9/05
 CHECKED BY: S.B. WILLIAMS DATE: 2/21/05

17-MAR-2005 14:13
 W:\squad\3349\pbrewer\18\B3349_sd.EB2.01.dgn
 mbr111

REVISIONS						SHEET NO.
NO.	BY:	DATE:	NO.	BY:	DATE:	S-40
1			3			TOTAL SHEETS
2			4			44