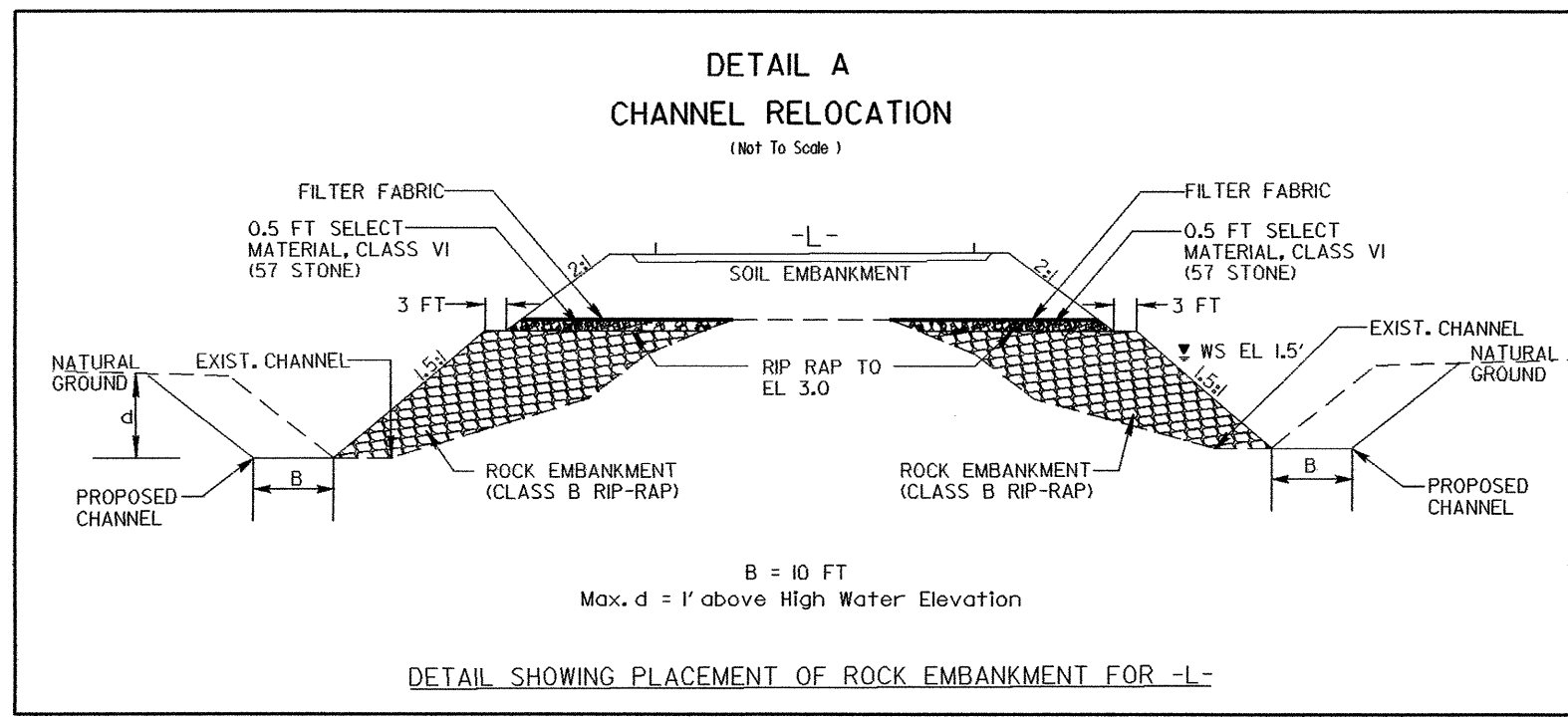
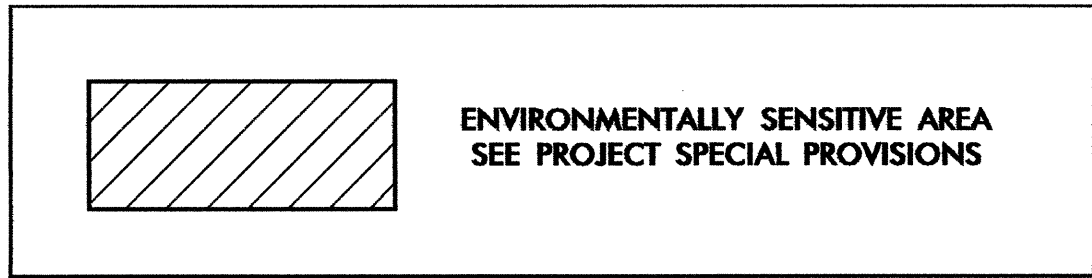


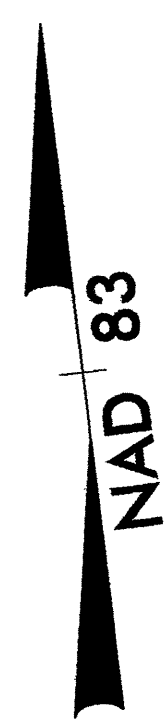
PROJECT REFERENCE NO. B-3349		SHEET NO. EC-3/CONST.4	
RW SHEET NO.			
ROADWAY DESIGN ENGINEER		HYDRAULICS ENGINEER	
-L-			



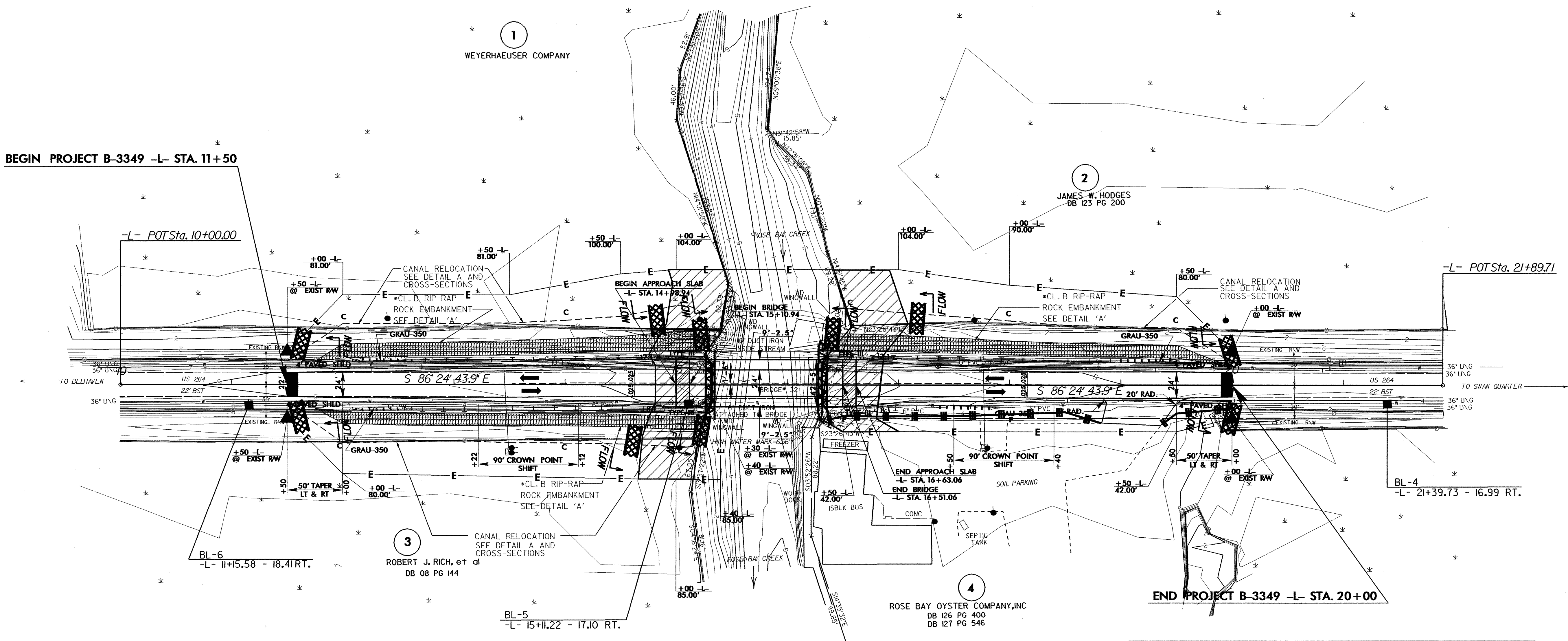
**CLEARING AND GRUBBING  
EROSION CONTROL FOR  
CONSTRUCTION SHEET 4**

**NOTE:**  
PLACE TEMPORARY ROCK SEDIMENT DAMS TYPE- B  
AND TEMPORARY ROCK SILT CHECKS TYPE-A AT  
DRAINAGE OUTLETS.

**NOTE:**  
UTILIZE TEMPORARY ROCK SILT CHECK TYPE - A  
AS STILLING BASIN WHERE APPLICABLE.



STA 11+75 -L- TO STA 15+30 -L- RT  
STA 11+75 -L- TO STA 15+30 -L- LT  
STA 16+32 -L- TO STA 20+00 -L- LT



**DATUM DESCRIPTION**

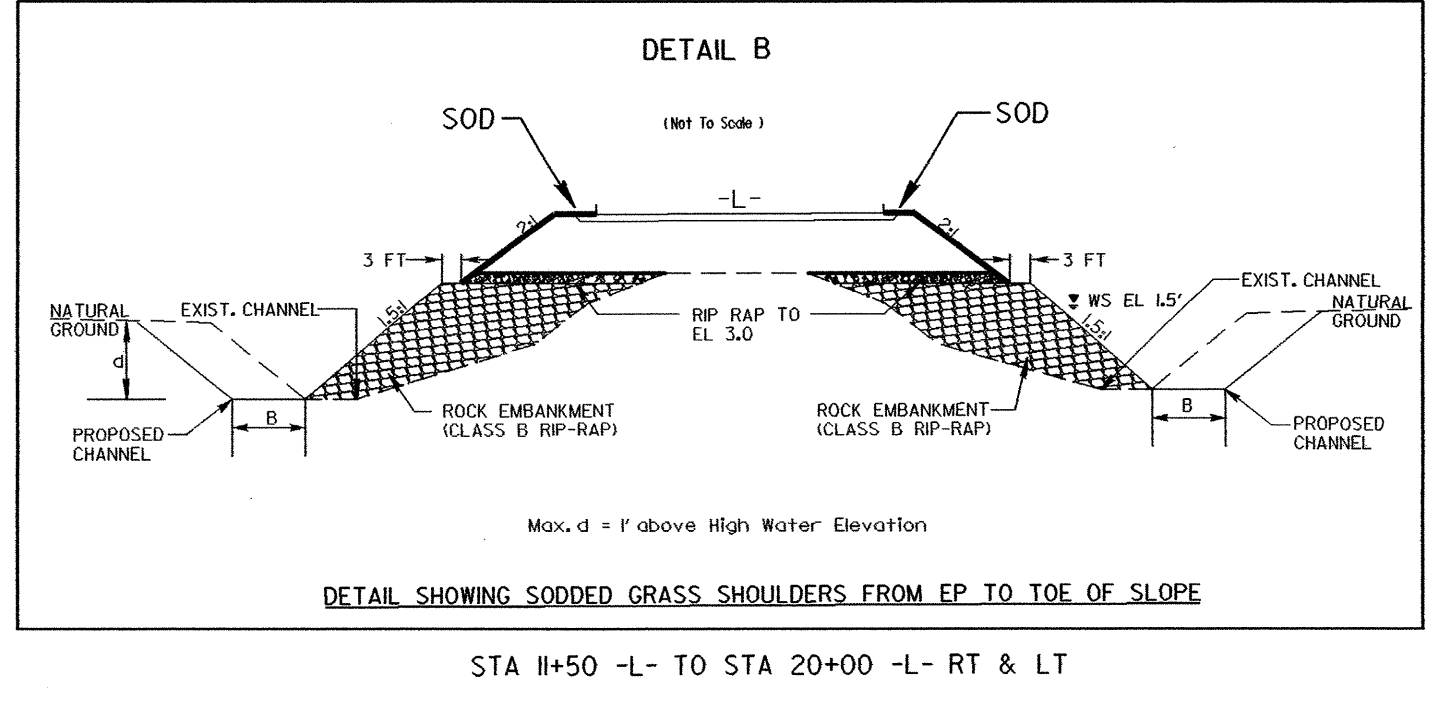
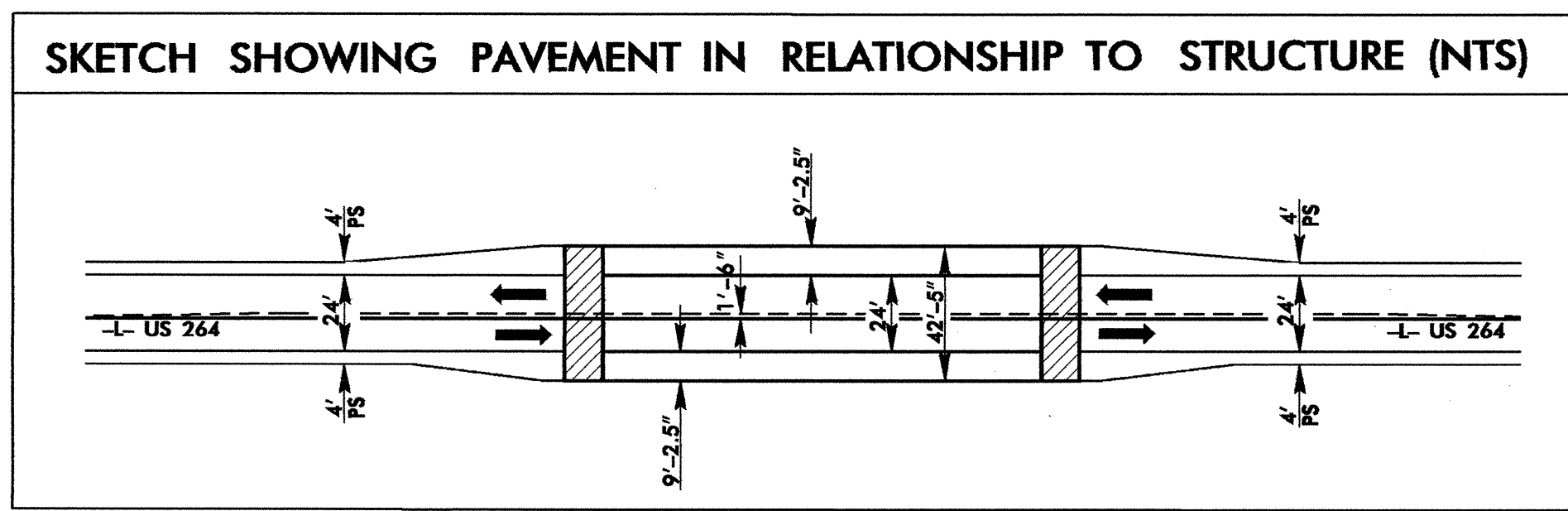
THE LOCALIZED COORDINATE SYSTEM DEVELOPED FOR THIS PROJECT IS BASED ON THE STATE PLANE COORDINATES ESTABLISHED BY NCSS FOR MONUMENT "DRILL".

WITH NAD 83 STATE PLANE GRID COORDINATES OF NORTHING: 633232676(11) EASTING: 277575137(411)

THE AVERAGE COMBINED GRID FACTOR USED ON THIS PROJECT (GROUND TO GRID) IS: 0.9998791

THE N.C. LAMBERT GRID BEARING AND LOCALIZED HORIZONTAL GROUND DISTANCE FROM "DRILL" TO -L- POT STATION 11+50 IS  
N 86° 29' 52.92" W 3131.11 FT

ALL LINEAR DIMENSIONS ARE LOCALIZED HORIZONTAL DISTANCES  
VERTICAL DATUM USED IS NGVD 29



**NOTE: SEE SHEET 5 FOR -L- PROFILE  
SEE SHEETS S-1 THRU S-5 FOR STRUCTURE PLANS  
SEE SHEET 4A FOR DETOUR ALIGNMENT**