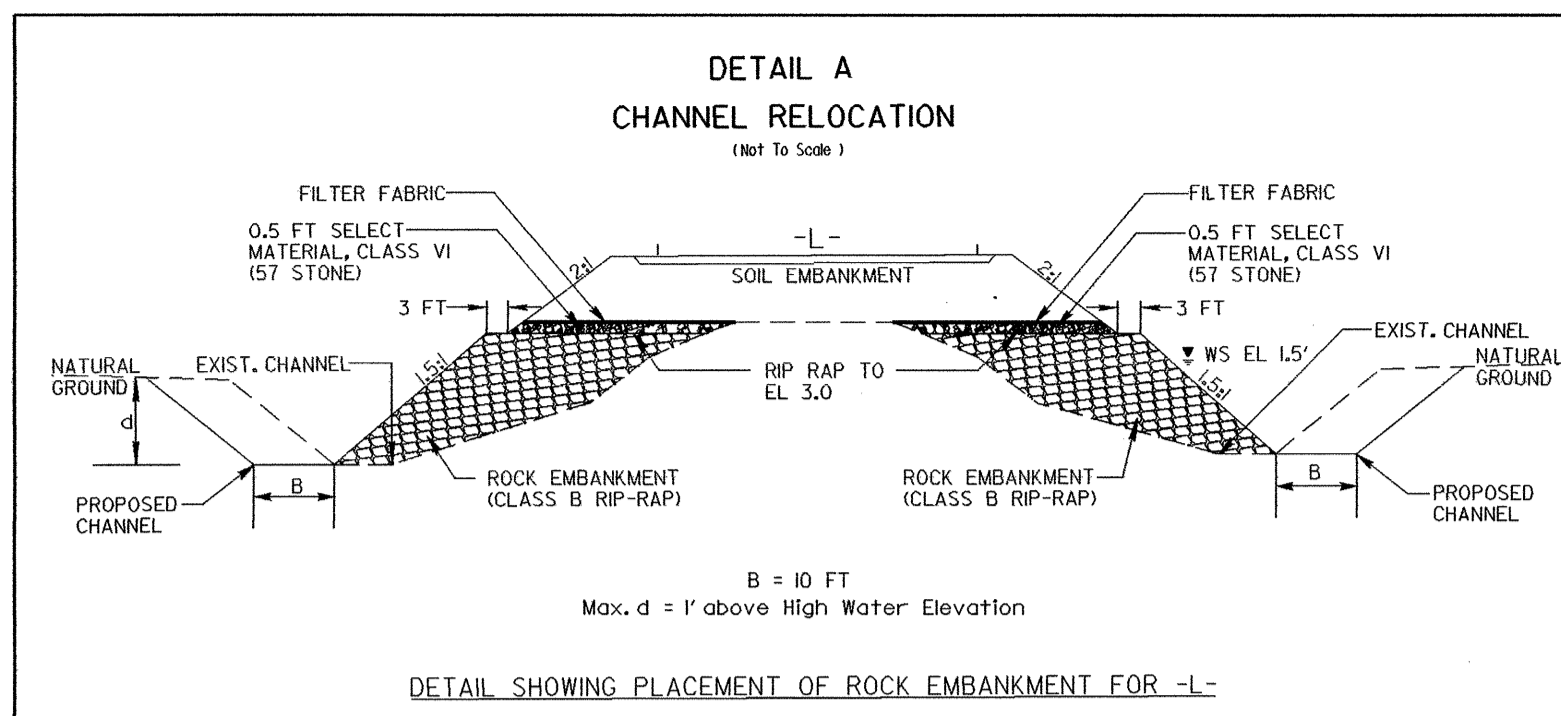


7/2/99

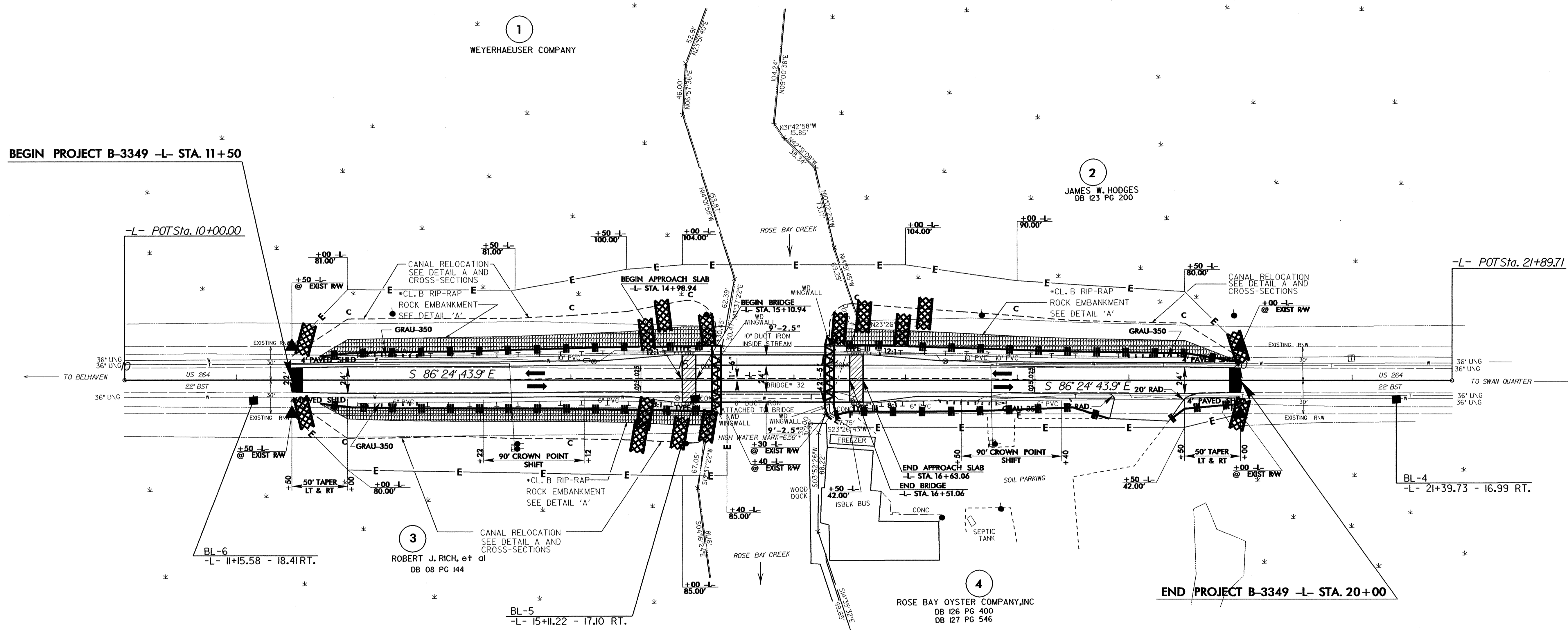
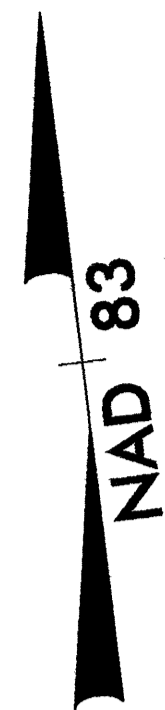
REVISIONS

PROJECT REFERENCE NO. B-3349		SHEET NO. EC-5/CONST.4	
RW SHEET NO.			
ROADWAY DESIGN ENGINEER		HYDRAULICS ENGINEER	
-L-			

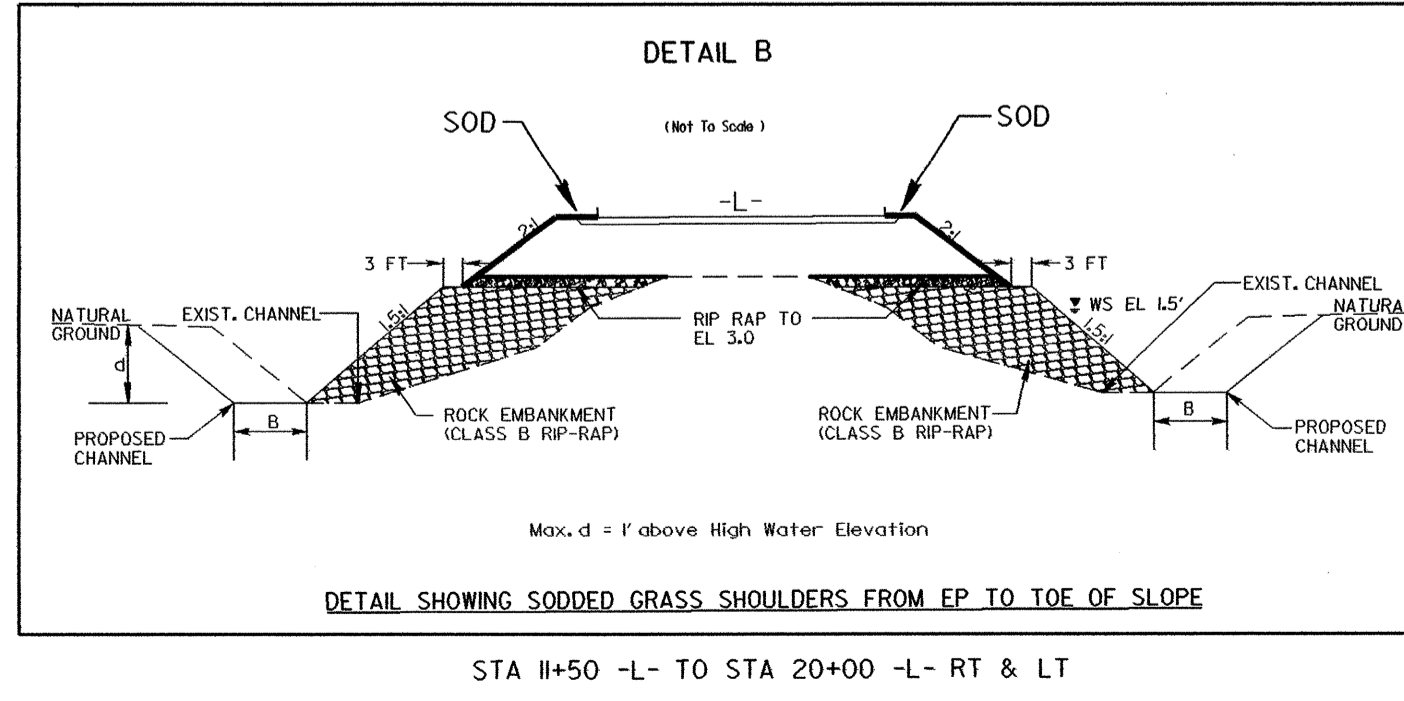
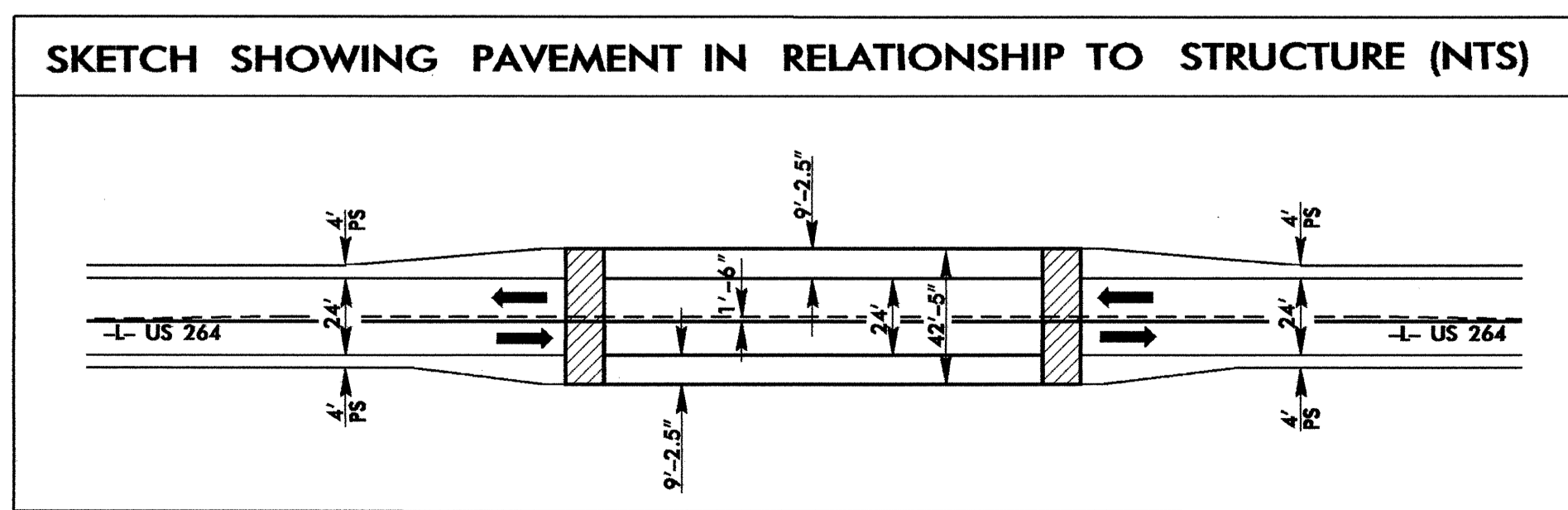


NOTE:
UTILIZE TEMPORARY ROCK SILT CHECK TYPE - A AS STILLING BASIN WHERE APPLICABLE.

STA 11+75 -L- TO STA 15+30 -L- RT
 STA 11+75 -L- TO STA 15+30 -L- LT
 STA 16+32 -L- TO STA 20+00 -L- LT



DATUM DESCRIPTION
 THE LOCALIZED COORDINATE SYSTEM DEVELOPED FOR THIS PROJECT IS BASED ON THE STATE PLANE COORDINATES ESTABLISHED BY NCOS FOR MONUMENT "DRILL"
 WITH NAD 83 STATE PLANE GRID COORDINATES OF NORTHING: 633232676(11) EASTING: 2775751374(11)
 THE AVERAGE COMBINED GRID FACTOR USED ON THIS PROJECT (GROUND TO GRID) IS: 0.9998791
 THE N.C. LAMBERT GRID BEARING AND LOCALIZED HORIZONTAL GROUND DISTANCE FROM "DRILL" TO -L- POT STATION 11+50 IS
 N 86° 29' 52.92" W 3131.11 FT
 ALL LINEAR DIMENSIONS ARE LOCALIZED HORIZONTAL DISTANCES
 VERTICAL DATUM USED IS NGVD 29



**NOTE: SEE SHEET 5 FOR -L- PROFILE
 SEE SHEETS S-1 THRU S- FOR STRUCTURE PLANS
 SEE SHEET 4A FOR DETOUR ALIGNMENT**

I:\FEB-2004_6:01
 et:\Bridges\B-3349\pro\B3349s4.ash
 mstoley AT