

NOTES:

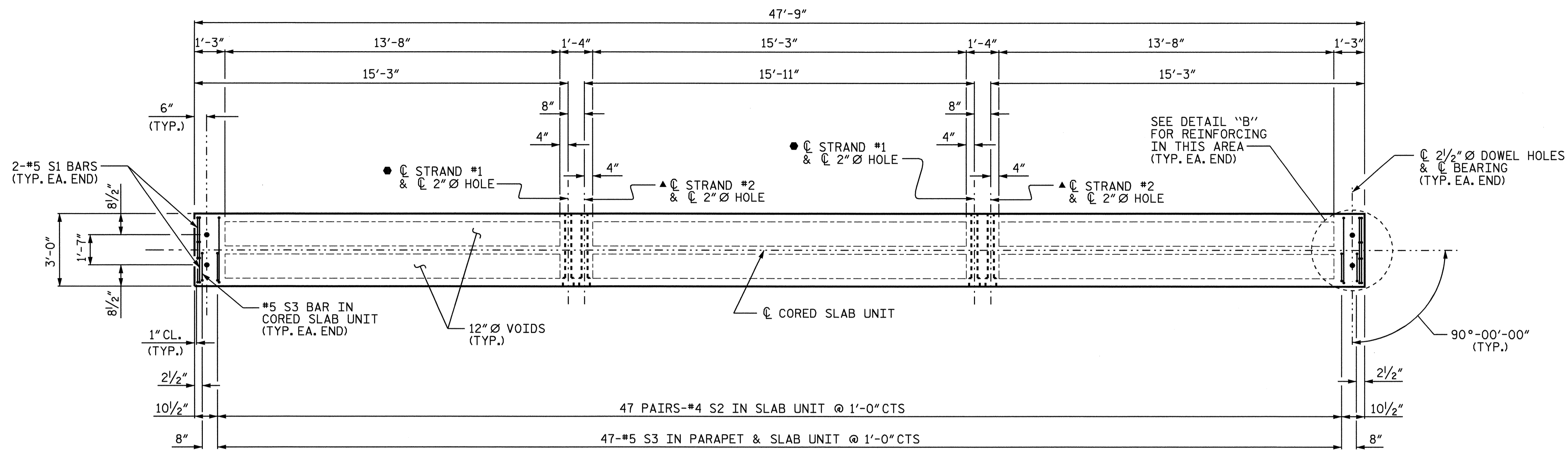
FOR GROUTED RECESS SEE "SUPERSTRUCTURE TYPICAL SECTION" SHEET 2 OF 2.

● STRAND #1 GOES THRU 8 CORED SLAB UNITS (TO BE TENSIONED DURING STAGE 1 CONSTRUCTION)

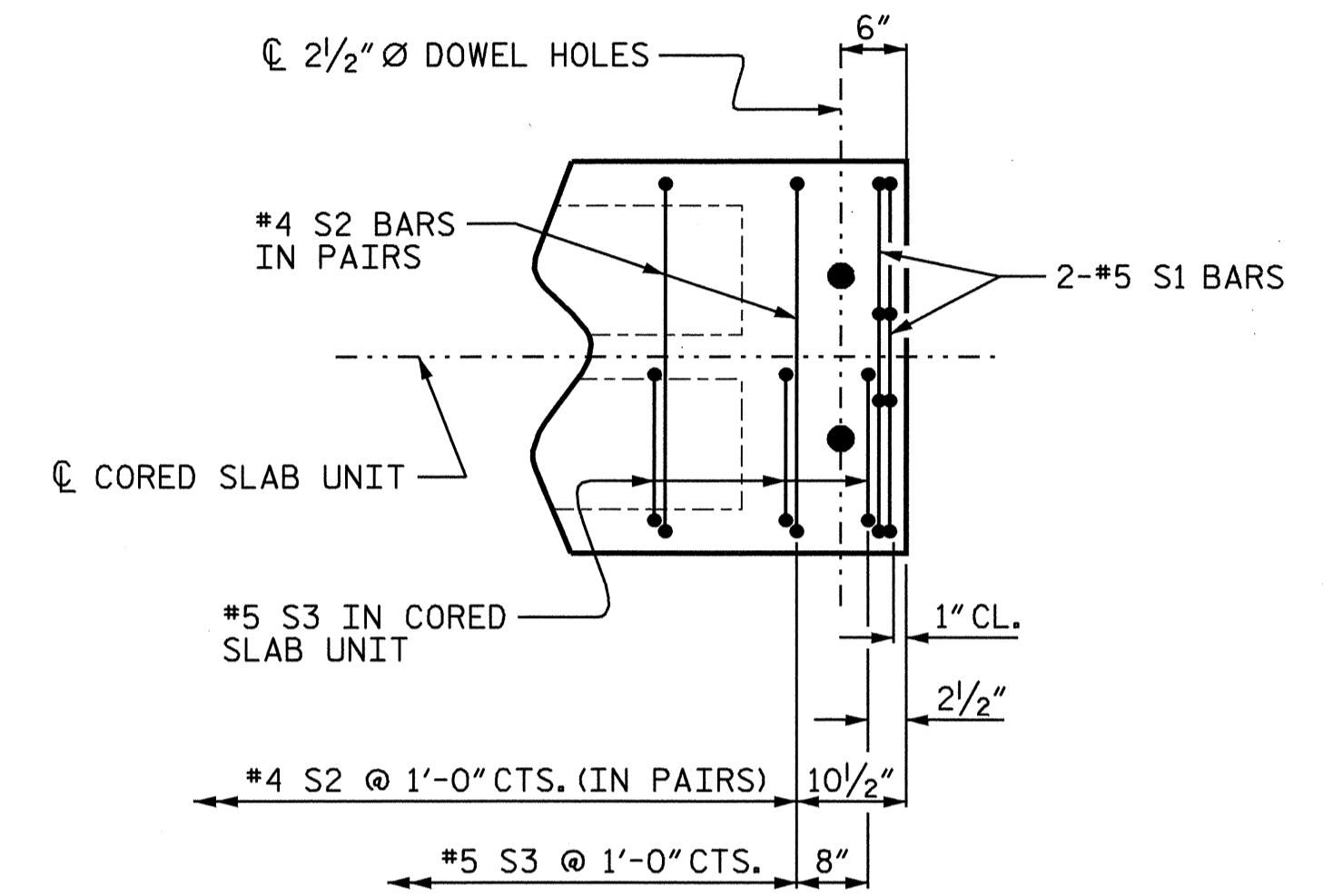
▲ STRAND #2 GOES THRU ALL 13 CORED SLAB UNITS (TO BE TENSIONED DURING STAGE 2 CONSTRUCTION)

●▲ STRAND #1 AND STRAND #2 ARE 1/2" Ø H.S. TRANSVERSE POST-TENSIONING STRANDS.

THE #4 S2 AND #5 S3 BARS MAY BE SHIFTED SLIGHTLY IN ORDER TO MAINTAIN A 2" MIN. CLEARANCE TO THE 2" Ø HOLES.

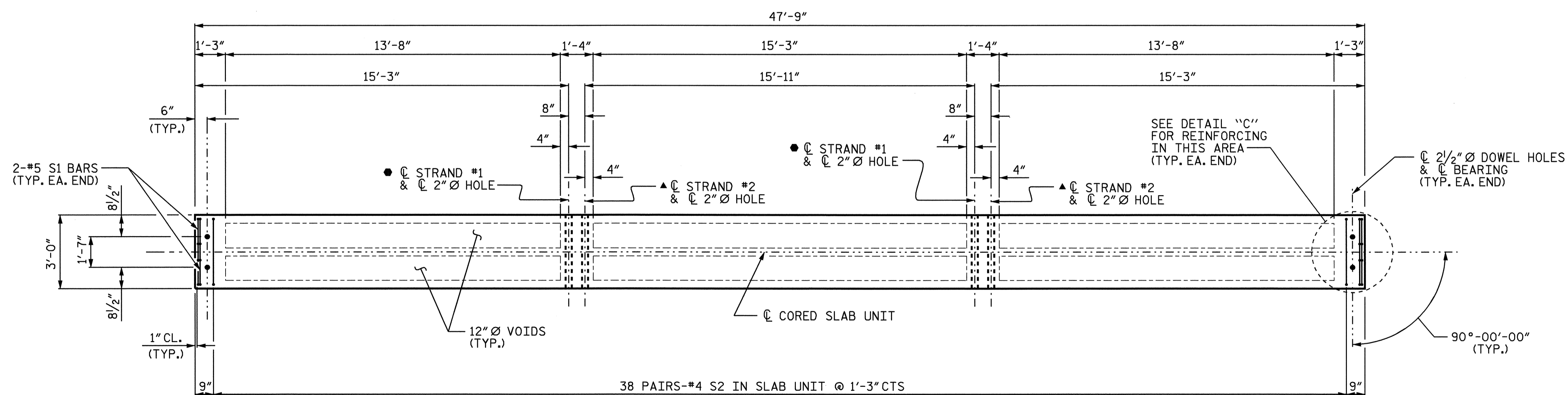


PLAN OF TYPE I CORED SLAB UNIT (STAGE 1)

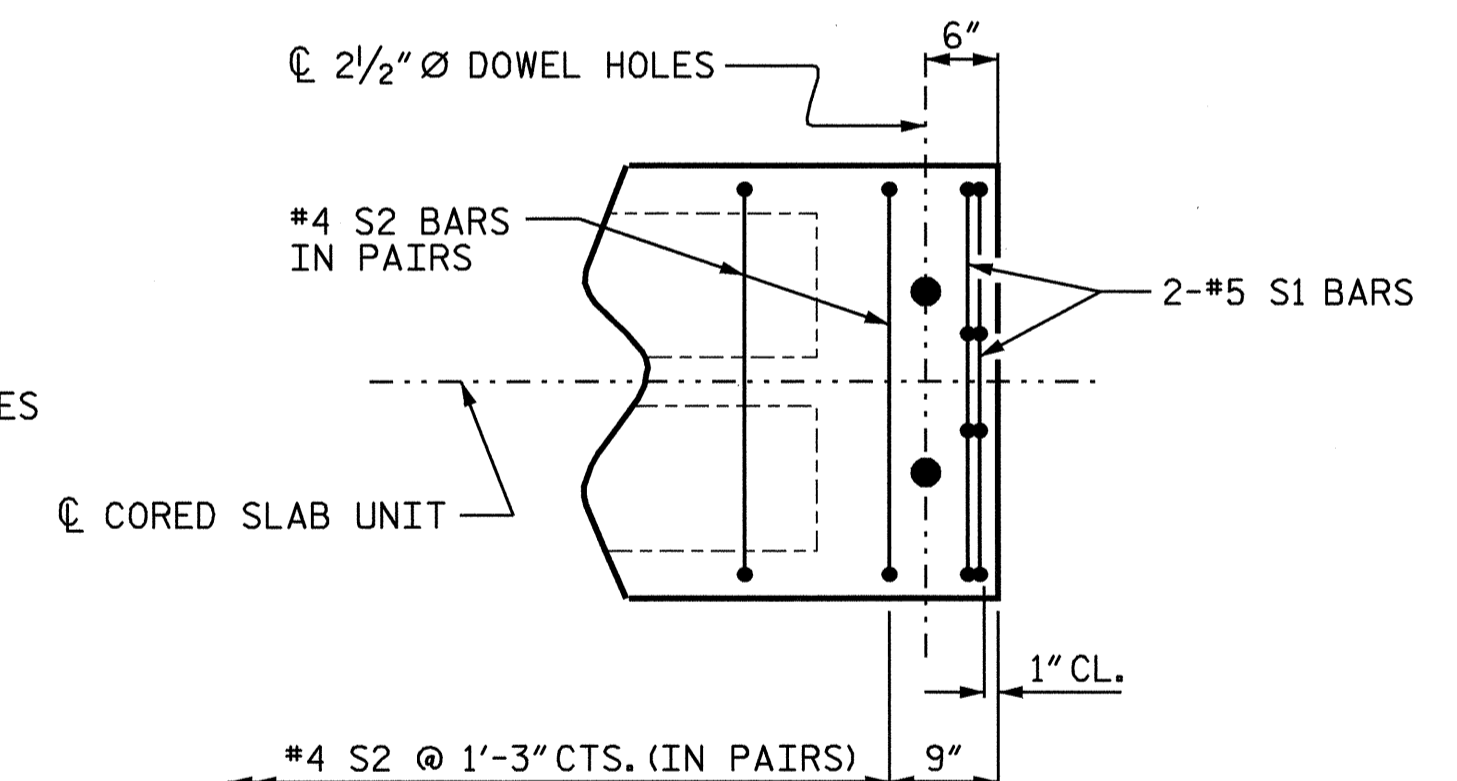


DETAIL "B"

(EACH END SIMILAR)



PLAN OF TYPE II CORED SLAB UNIT (STAGE 1)



DETAIL "C"

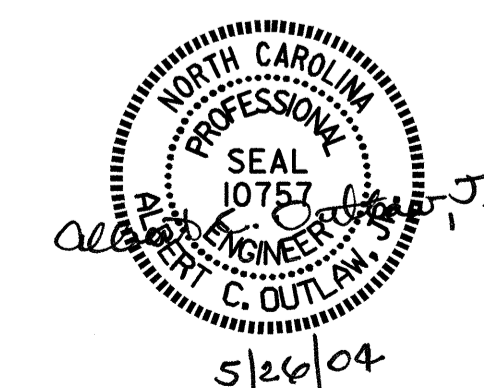
(EACH END SIMILAR)

PROJECT NO. **B-3348**

HYDE COUNTY

STATION: **18+34.00 -L-**

SHEET 1 OF 3



STATE OF NORTH CAROLINA
 DEPARTMENT OF TRANSPORTATION
 RALEIGH
3'-0" X 1'-9"
PRESTRESSED CONCRETE
CORED SLAB UNIT
DETAILS

DRAWN BY: **P.C. BREWER** DATE: **1/14/04**
 CHECKED BY: **A.C. OUTLAW** DATE: **1/26/04**

26-MAY-2004 07:01
 W:\squad\b3348\str1\pbrw\m\crostatlon\b3348.sd.cs_01.dgn
 pbrw

REVISIONS						SHEET NO.	
NO.	BY:	DATE:	NO.	BY:	DATE:	S-8	
1			3			TOTAL SHEETS	
2			4			76	

STR. #1