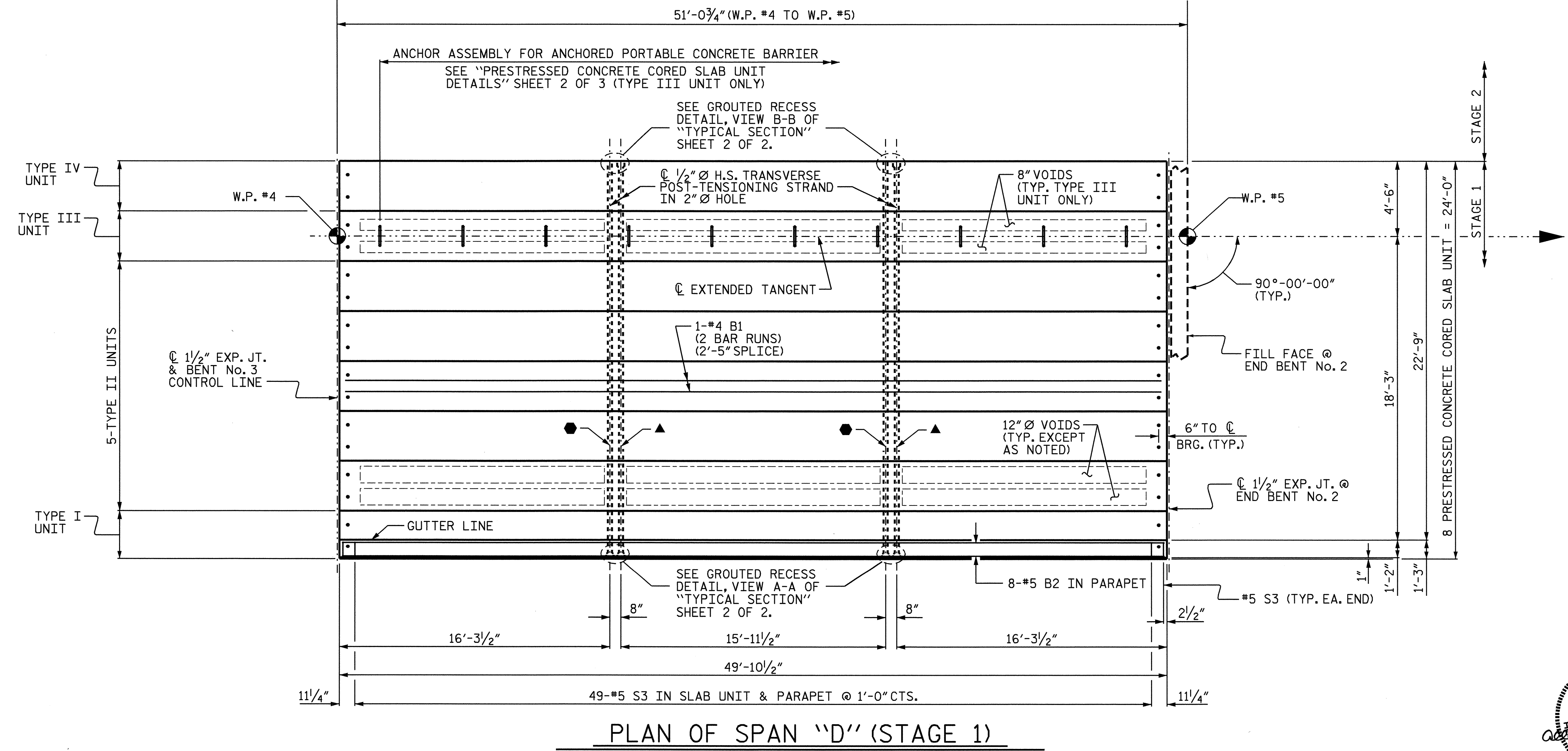
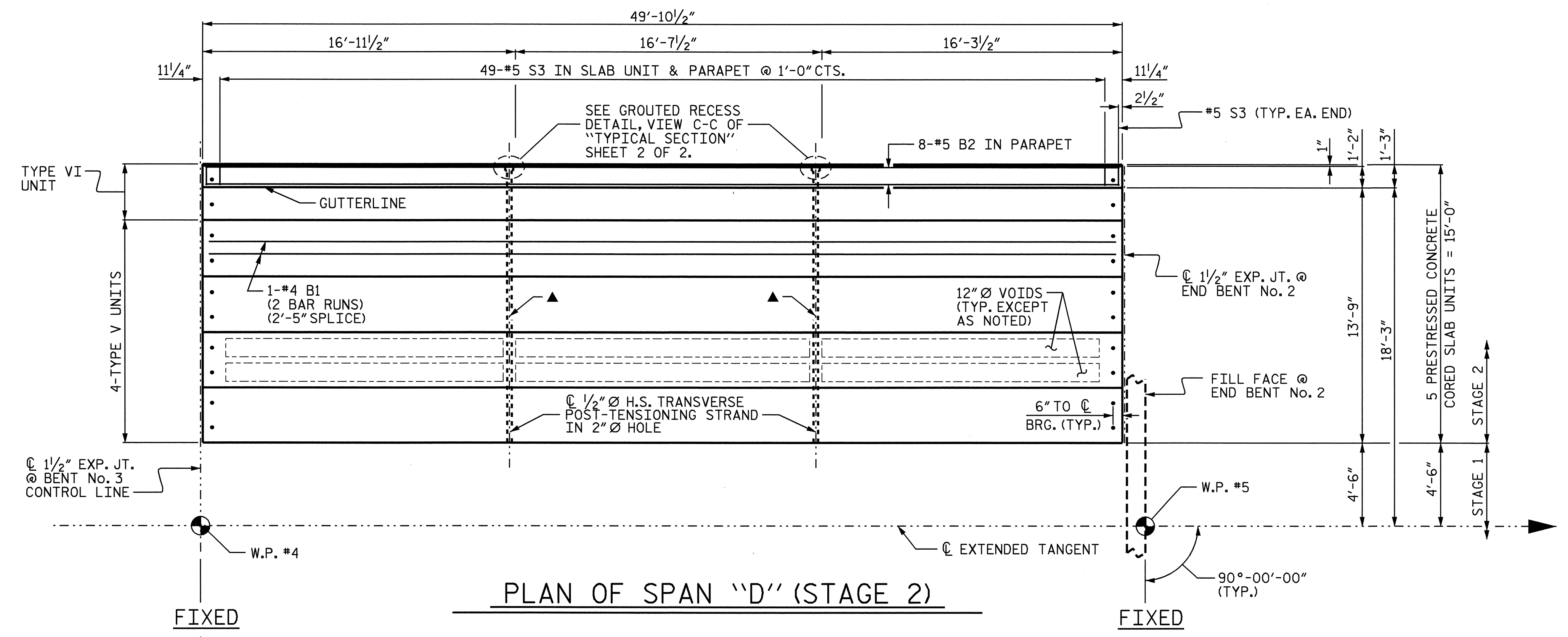
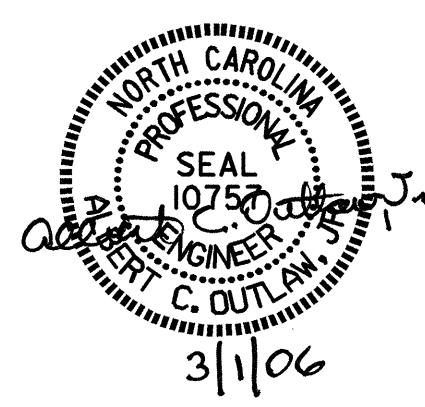


- NOTES:**
- STRAND #1 GOES THRU 8 CORED SLAB UNITS (TO BE TENSIONED DURING STAGE 1 CONSTRUCTION)
 - ▲ STRAND #2 GOES THRU ALL 13 CORED SLAB UNITS (TO BE TENSIONED DURING STAGE 2 CONSTRUCTION)



PROJECT NO. B-3348
HYDE COUNTY
 STATION: 22+85.00 -L-

STATE OF NORTH CAROLINA
 DEPARTMENT OF TRANSPORTATION
 RALEIGH
 SUPERSTRUCTURE
 PLAN OF SPAN "D"



DRAWN BY: P.C. BREWER DATE: 1/15/03
 CHECKED BY: I.N. CARROLL DATE: 3/10/03

REVISIONS						SHEET NO.	
NO.	BY:	DATE:	NO.	BY:	DATE:	S-40	
1			3			TOTAL SHEETS	76
2			4				