

NOTES:

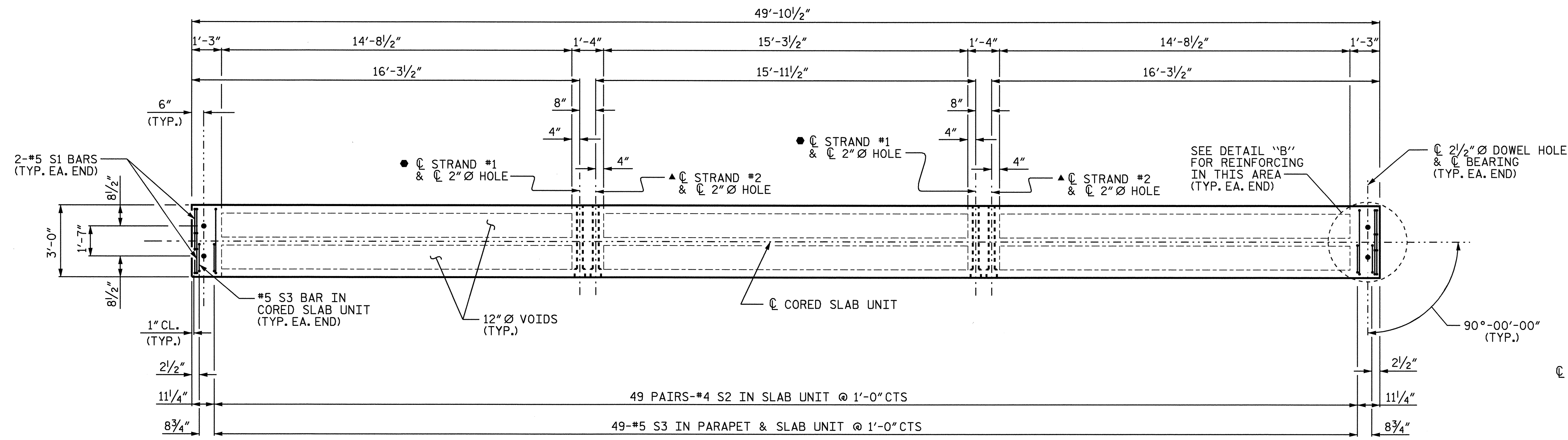
FOR GROUDED RECESS, SEE "SUPERSTRUCTURE TYPICAL SECTION" SHEET 2 OF 2.

● STRAND #1 GOES THRU 8 CORED SLAB UNITS (TO BE TENSIONED DURING STAGE 1 CONSTRUCTION)

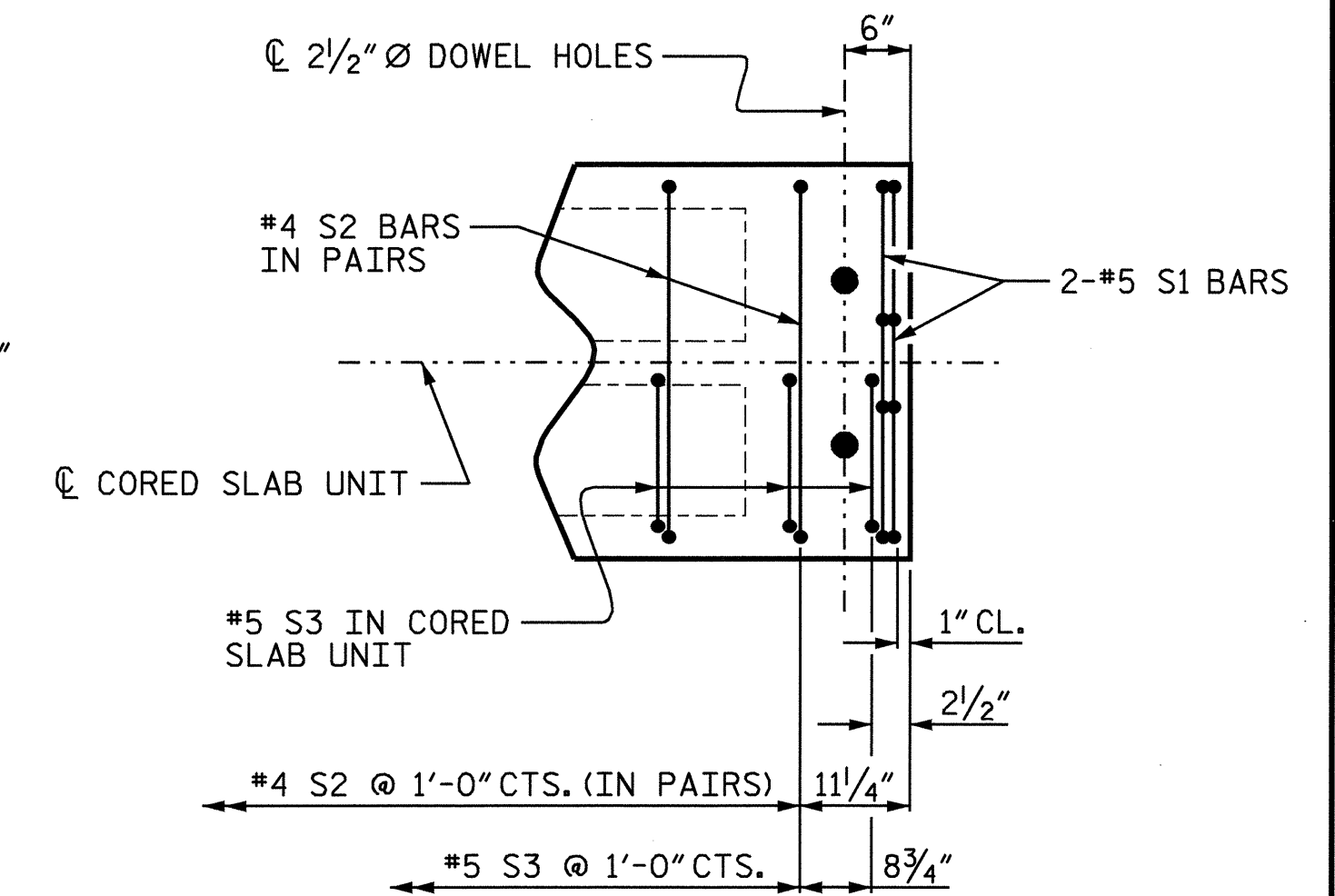
▲ STRAND #2 GOES THRU ALL 13 CORED SLAB UNITS (TO BE TENSIONED DURING STAGE 2 CONSTRUCTION)

●▲ STRAND #1 AND STRAND #2 ARE 1/2" Ø H.S. TRANSVERSE POST-TENSIONING STRANDS.

THE #4 S2 AND #5 S3 BARS MAY BE SHIFTED SLIGHTLY IN ORDER TO MAINTAIN A 2" MIN. CLEARANCE TO THE 2" Ø HOLES.

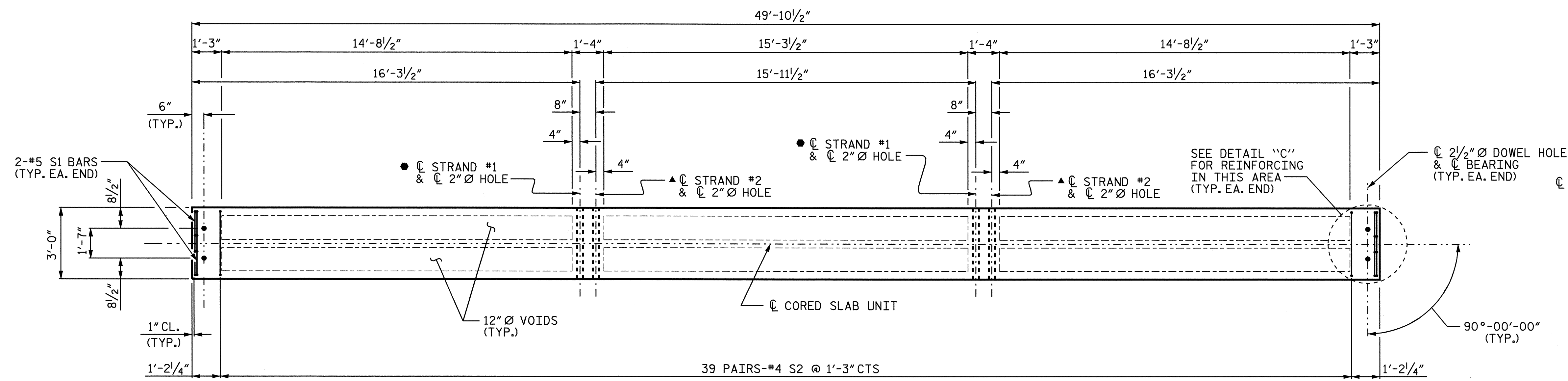


PLAN OF TYPE I CORED SLAB UNIT (STAGE 1)

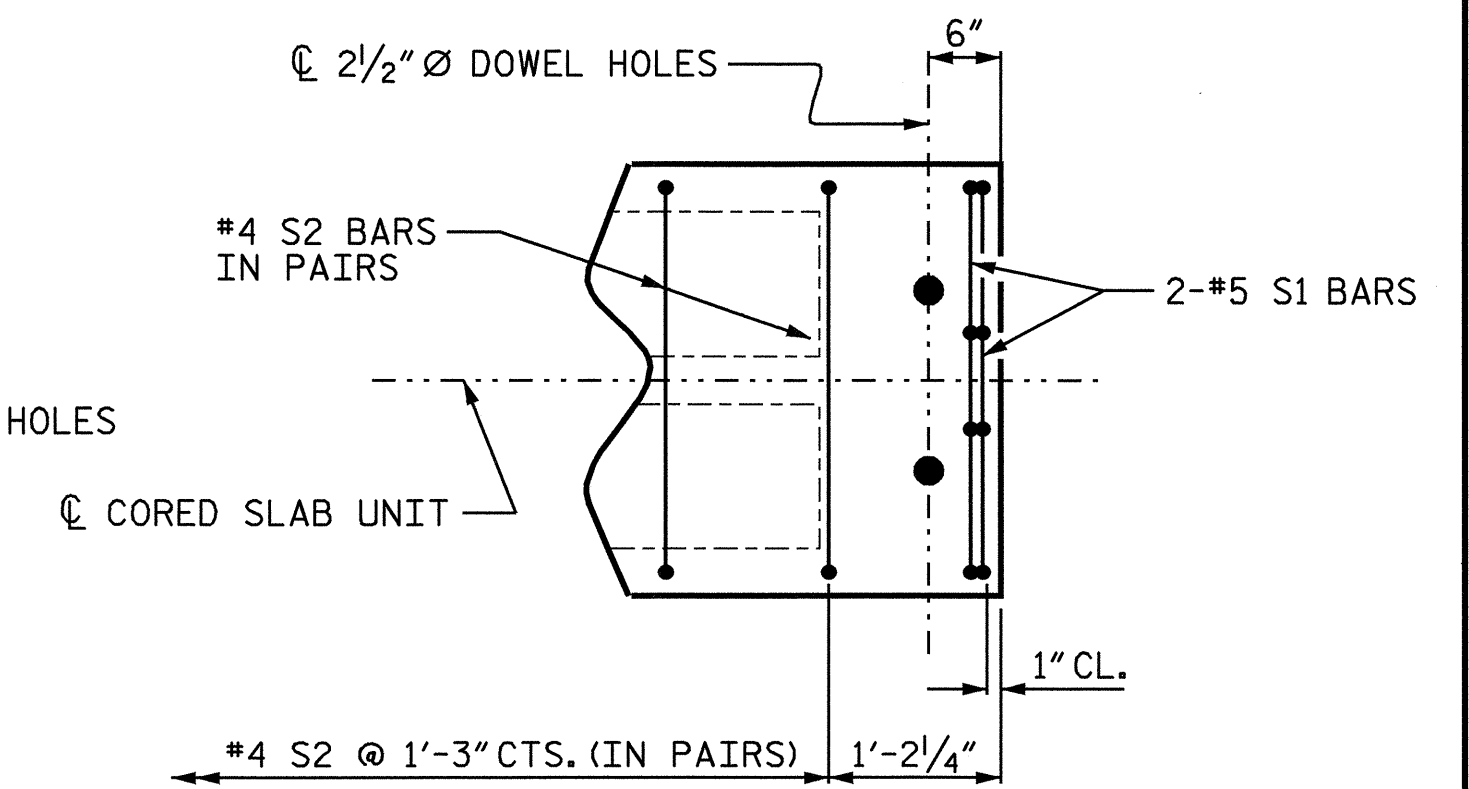


DETAIL "B"

(EACH END SIMILAR)



PLAN OF TYPE II CORED SLAB UNIT (STAGE 1)



DETAIL "C"

(EACH END SIMILAR)

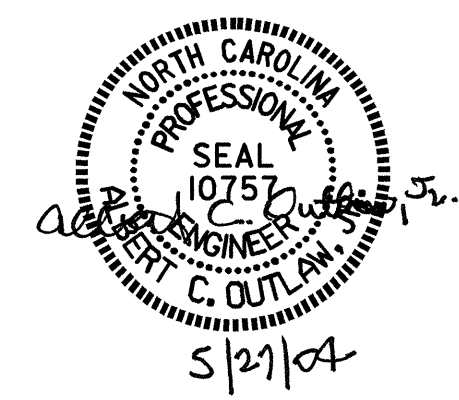
PROJECT NO. B-3348

HYDE COUNTY

STATION: 22+85.00 -L-

SHEET 1 OF 3

STATE OF NORTH CAROLINA
DEPARTMENT OF TRANSPORTATION
RALEIGH
3'-0" X 1'-9"
PRESTRESSED CONCRETE
CORED SLAB UNIT
DETAILS



DRAWN BY: P.C. BREWER DATE: 1/15/03
CHECKED BY: I.N. CARROLL DATE: 3/10/03

27-MAY-2004 09:07
W:\squad\B3348\str2\pbrewer\Microstation\B3348.sd_CS.02.dgn
pbrewer

REVISIONS						SHEET NO. S-41
NO.	BY:	DATE:	NO.	BY:	DATE:	
1			3			TOTAL SHEETS 76
2			4			