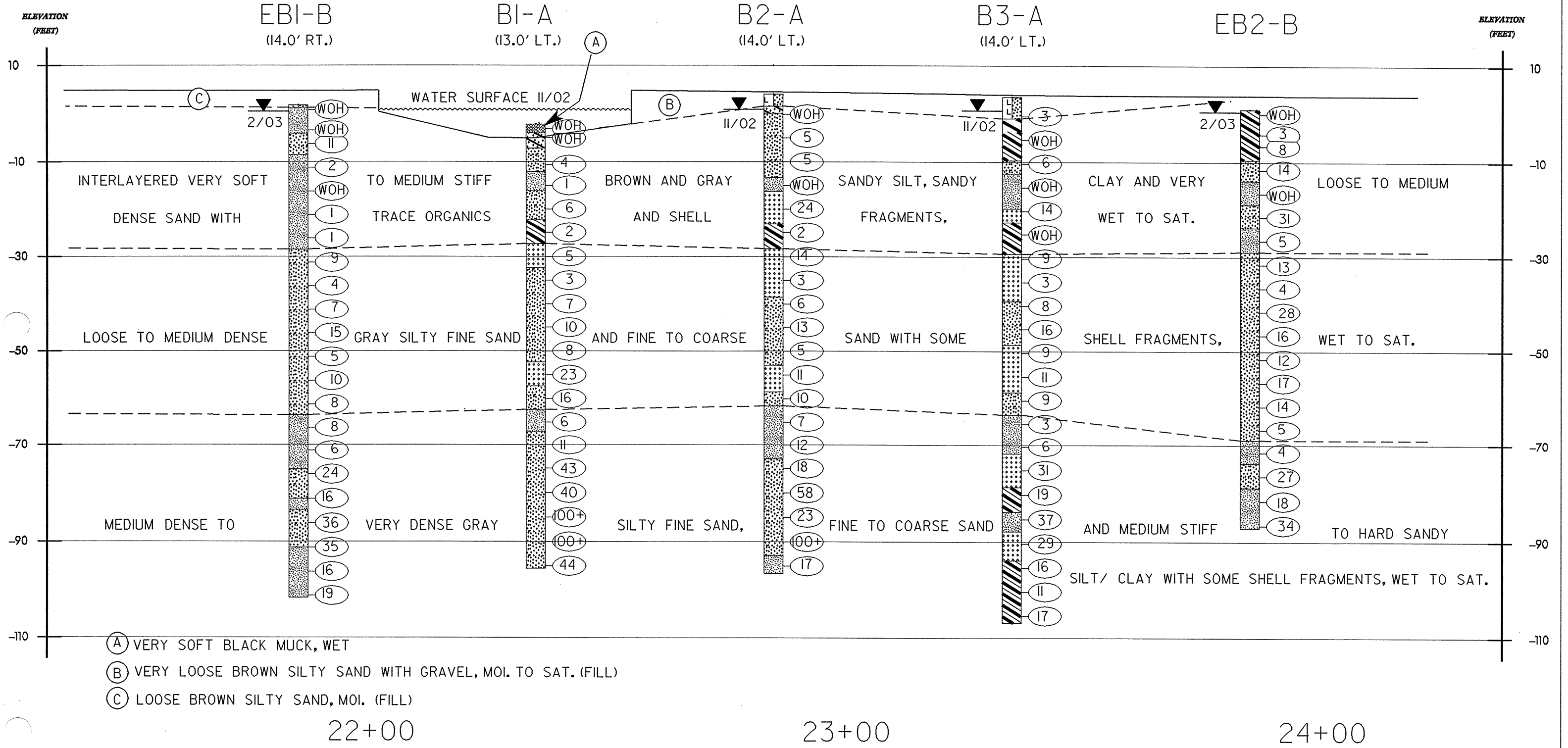


SOIL PROFILE ALONG US 264 (-L-) OVER KITTY CREEK

STATE PROJECT NO. 8.1080601	COUNTY HYDE	BRIDGE NO. 54	SHEET NO. 4	TOTAL SHEETS 17
--------------------------------	----------------	------------------	----------------	--------------------



- (A) VERY SOFT BLACK MUCK, WET
- (B) VERY LOOSE BROWN SILTY SAND WITH GRAVEL, MOI. TO SAT. (FILL)
- (C) LOOSE BROWN SILTY SAND, MOI. (FILL)

