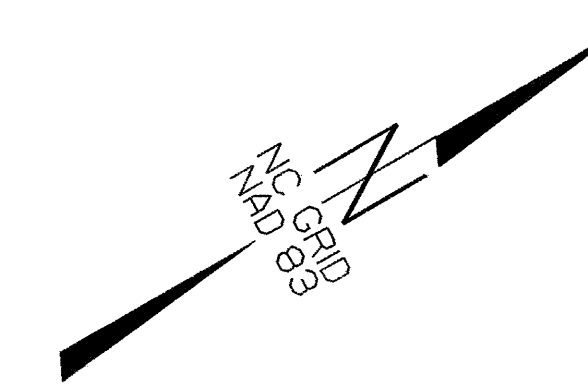
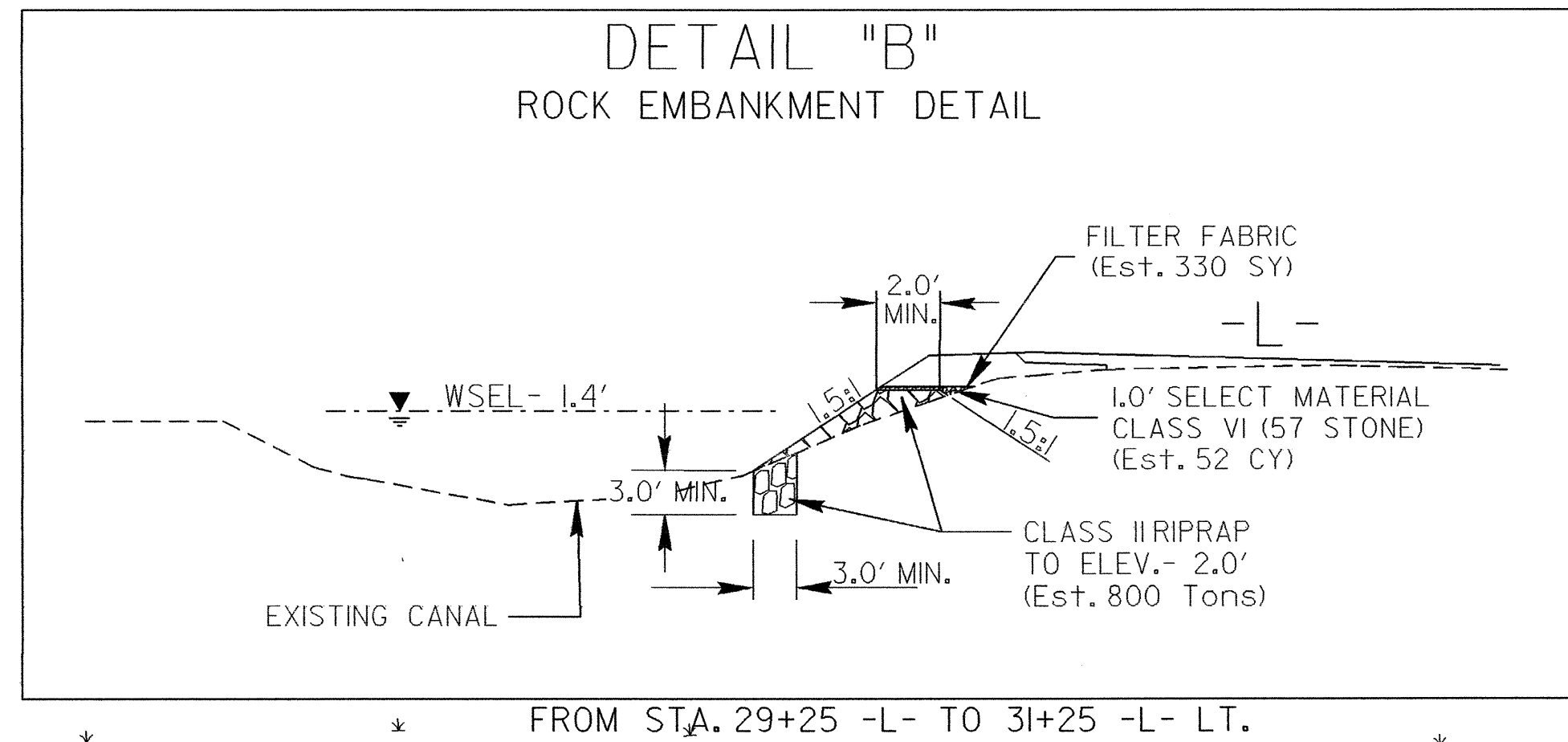
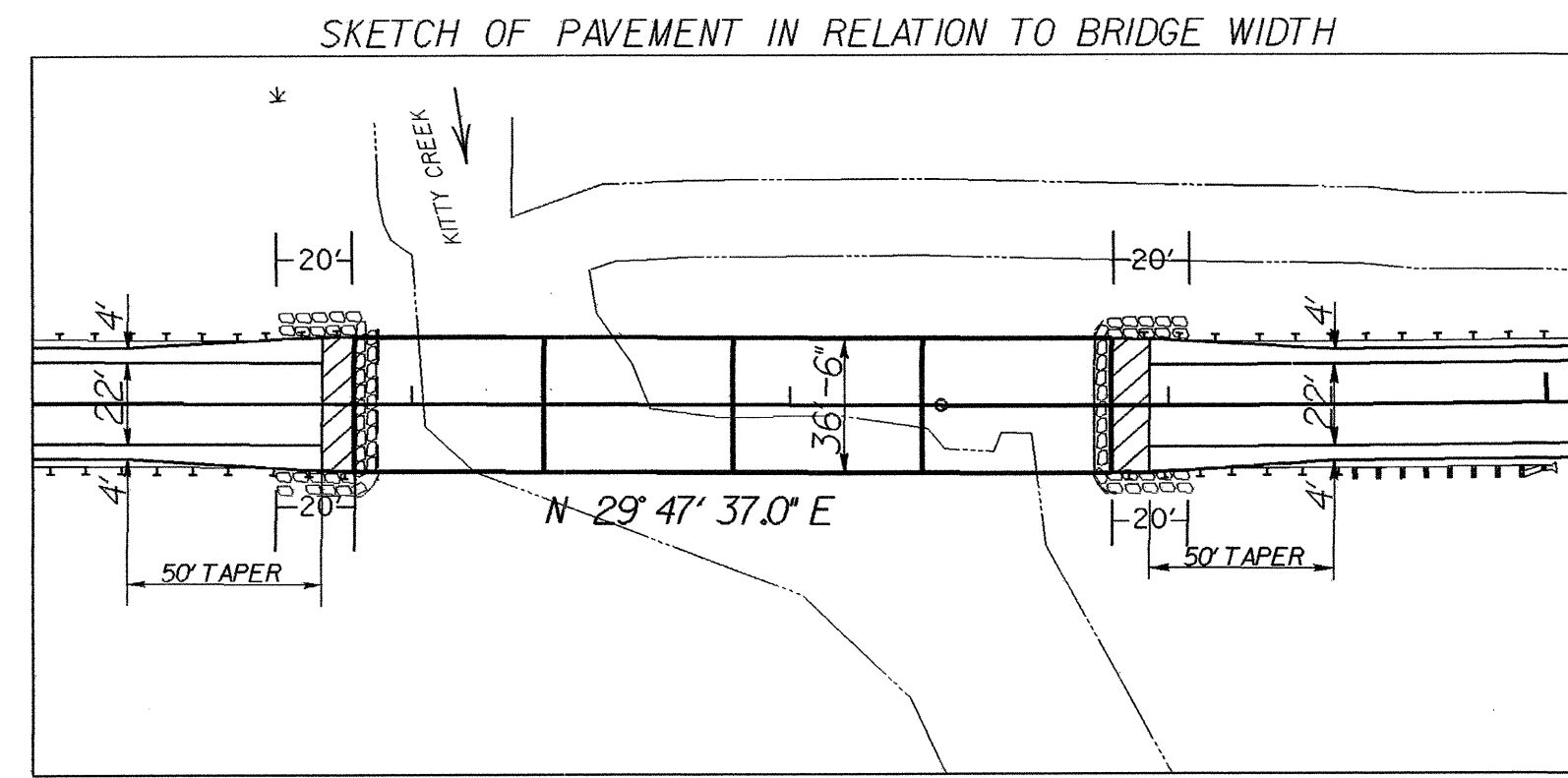


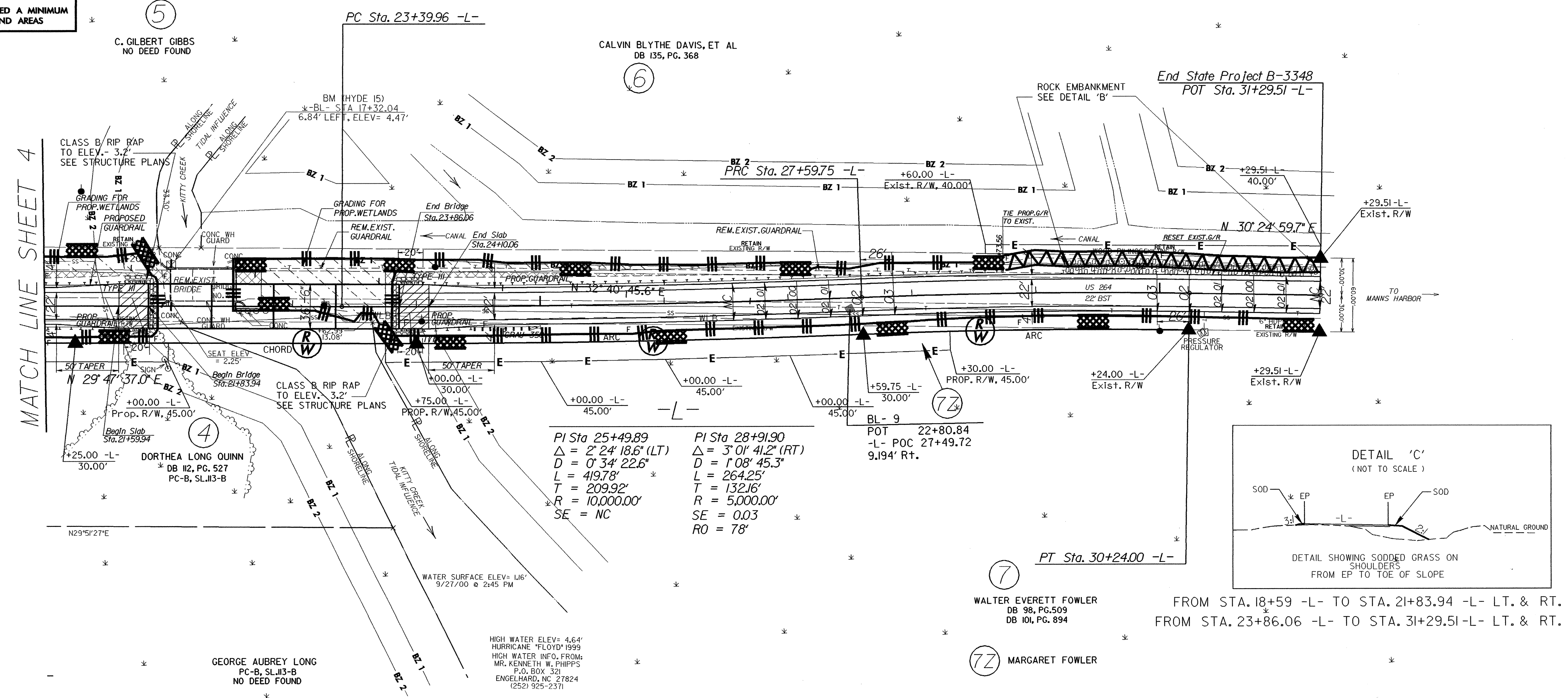
PROJECT REFERENCE NO.	SHEET NO.
B-3348	EC-6/CONST.5
RW SHEET NO.	
ROADWAY DESIGN ENGINEER	HYDRAULICS ENGINEER



NOTE: SEE SHEET No.6 FOR -L- PROFILE
NOTE: SEE S- THRU S- FOR STRUCTURE PLANS

NOTE: UTILIZE TEMPORARY ROCK SILT CHECK TYPE - A AS STILLING BASIN WHERE APPLICABLE.

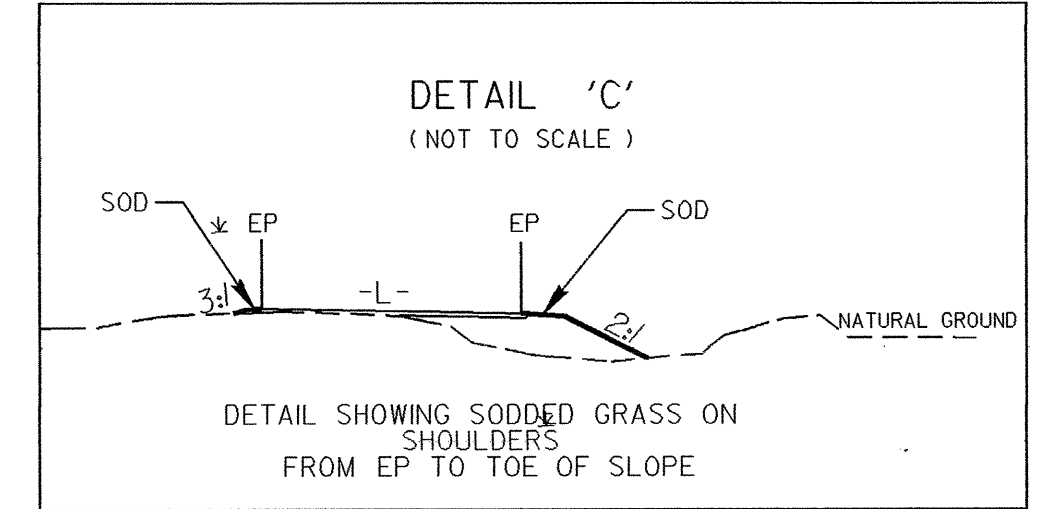
NOTE: TEMPORARY SILT FENCE SHALL BE INSTALLED A MINIMUM OF 3 FEET FROM TOE OF FILL IN WETLAND AREAS



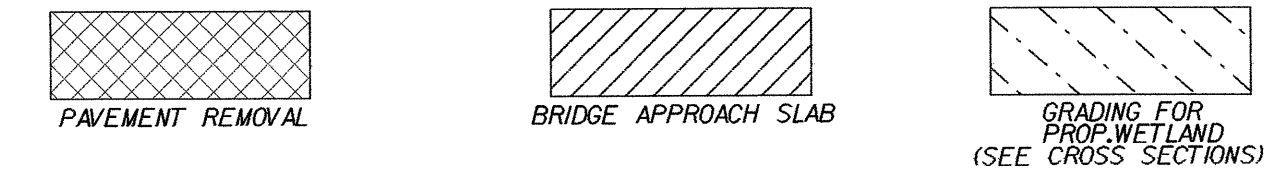
PI Sta 25+49.89
 $\Delta = 2' 24'' 18.6''$ (LT)
 $D = 0' 34'' 22.6''$
 $L = 419.78'$
 $T = 209.92'$
 $R = 10,000.00'$
 $SE = NC$

PI Sta 28+91.90
 $\Delta = 3' 01'' 41.2''$ (RT)
 $D = 1' 08'' 45.3''$
 $L = 264.25'$
 $T = 132.16'$
 $R = 5,000.00'$
 $SE = 0.03$
 $RO = 78'$

BL- 9
 POT 22+80.84
 -L- POC 27+49.72
 9.194' Rt.



FROM STA. 18+59 -L- TO STA. 21+83.94 -L- LT. & RT.
 FROM STA. 23+86.06 -L- TO STA. 31+29.51 -L- LT. & RT.



WALTER EVERETT FOWLER
 DB 98, PG. 509
 DB 101, PG. 894

MARGARET FOWLER

GEORGE AUBREY LONG
 PC-B, SL.II3-B
 NO DEED FOUND

HIGH WATER ELEV= 4.64'
 HURRICANE 'FLOYD' 1999
 HIGH WATER INFO. FROM:
 MR. KENNETH W. PHIPPS
 P.O. BOX 321
 ENGELHARD, NC 27824
 (252) 925-2371