

8/17/99

REVISIONS

REVISED BY: LAW

DATE: 01/09/06



RALPH WHITEHEAD ASSOCIATES
CONSULTING ENGINEERS
P.O. BOX 36624
CHARLOTTE, NORTH CAROLINA 28235

PROJECT REFERENCE NO. SHEET NO.

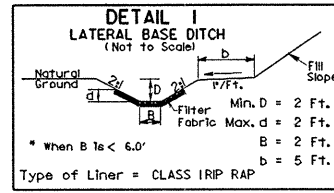
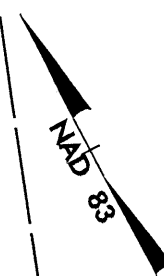
37613, ETC. 8

R/W SHEET NO.

ROADWAY DESIGN ENGINEER

HYDRAULICS ENGINEER

MAP #3 US 64 / SR 1401



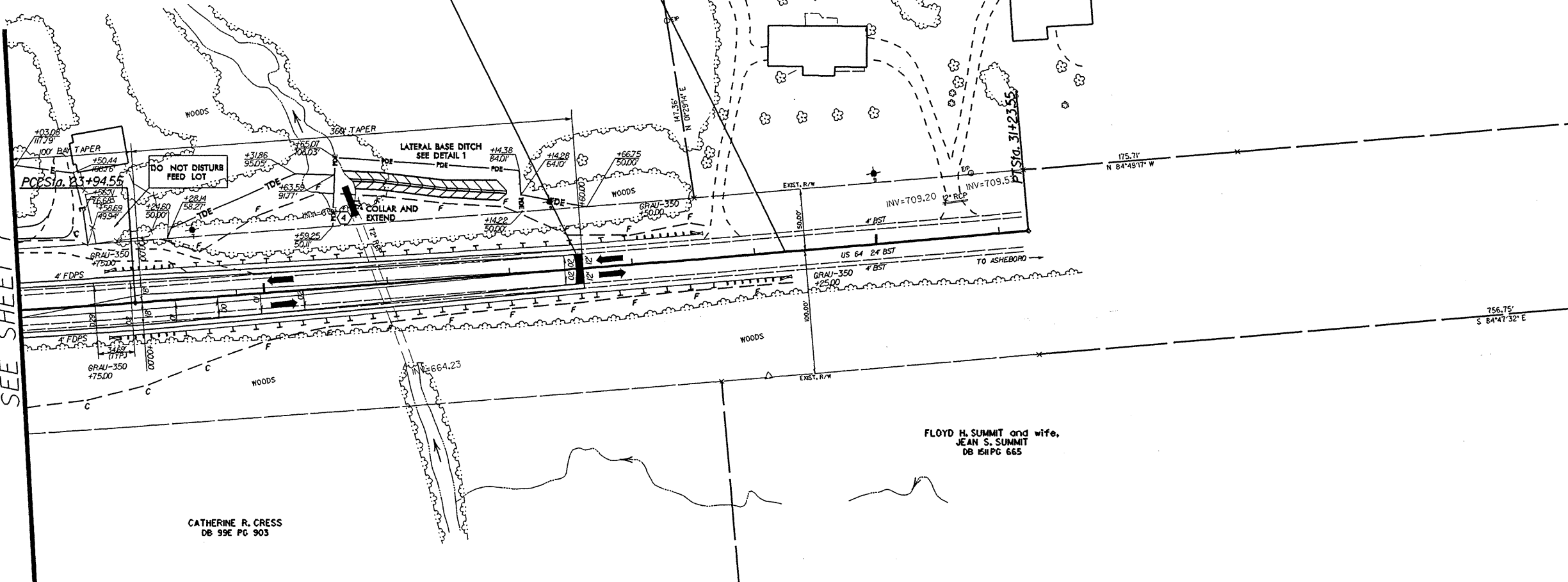
WAYNE MYERS and wife,
BERNICE MYERS
DB 645 PG 455
DB 806 PG 133

END GRADE
-L- POC STA. 27+60.00

END STATE PROJECT MA08013R
-L- POC STA. 29+25.00

FLOYD H. SUMMIT and wife,
BARBARA JEAN SUMMIT
DB 991 PG 412

MATCHLINE -L- STA. 23+00.00
SEE SHEET 7



CATHERINE R. CRESS
DB 99E PG 903

FLOYD H. SUMMIT and wife,
JEAN S. SUMMIT
DB 151 PG 665

-L-

PI Sta 17+46.84	PI Sta 27+59.06
$\Delta = 13^{\circ} 16' 21.7" (LT)$	$\Delta = 0^{\circ} 56' 45.8" (LT)$
D = 1'01' 23.3"	D = 0'07' 47.2"
L = 1297.25'	L = 729.00'
T = 651.54'	T = 364.51'
R = 5600.00'	R = 44,498.89'

SEE SHEET 9 FOR -L- PROFILE.