

REVISIONS

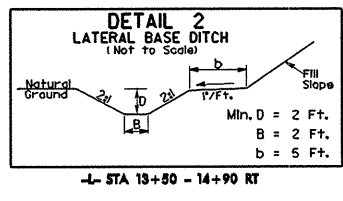
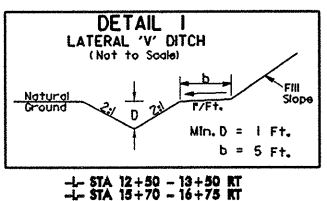
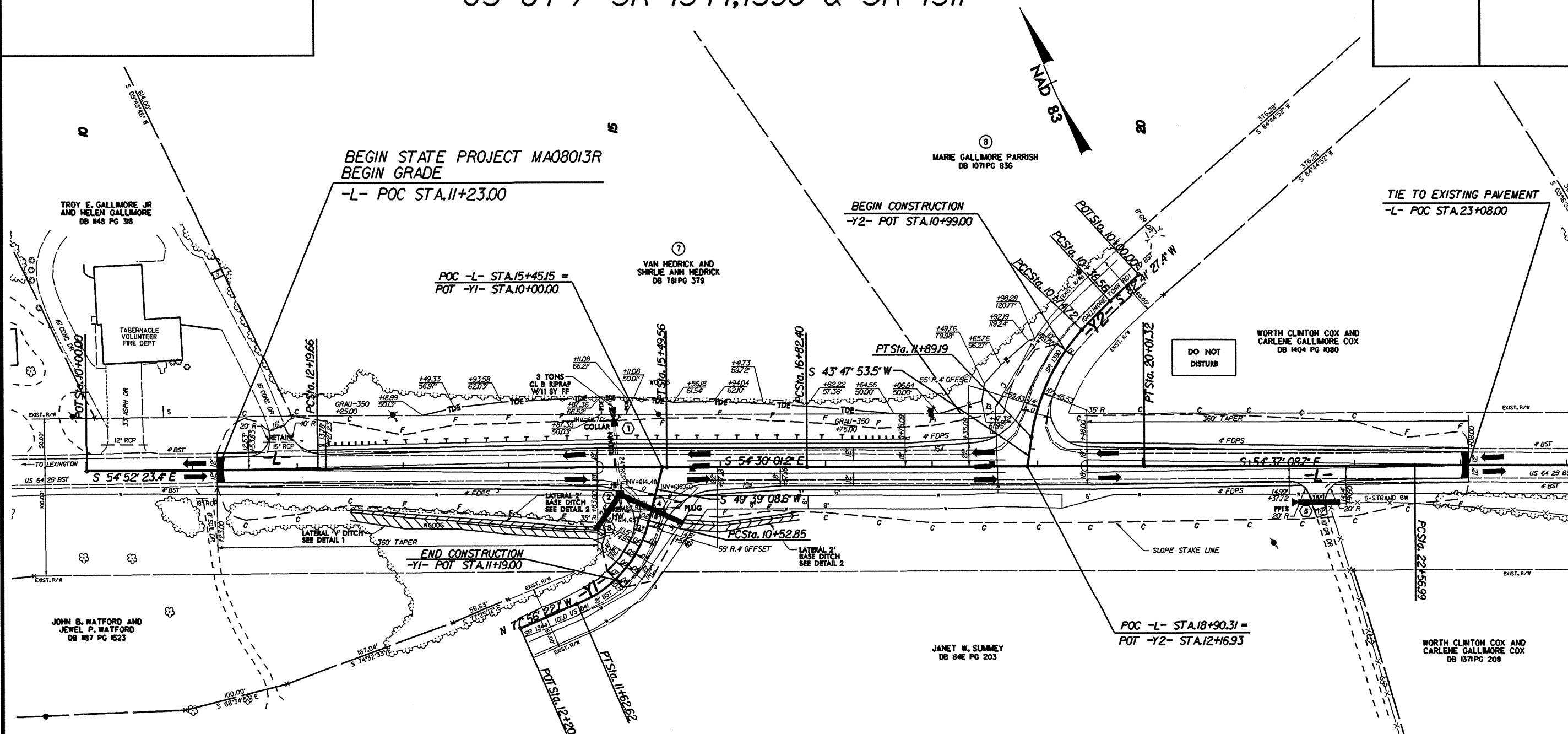
REVISED BY: LAW DATE: 10/9/06

**W** RALPH WHITEHEAD ASSOCIATES  
CONSULTING ENGINEERS  
P.O. BOX 55624  
CHARLOTTE, NORTH CAROLINA 28255

PROJECT REFERENCE NO. 37613, ETC.	SHEET NO. 10
RW SHEET NO.	
ROADWAY DESIGN ENGINEER	HYDRAULICS ENGINEER

# MAP #4

## US 64 / SR 1344, 1390 & SR 1311



NOTE:  
WATERLINE INFORMATION IS SHOWN PER GIS MAPS FROM DAVISON WATER, INC. AND IS FOR INFORMATION ONLY. THE CONTRACTOR SHOULD MAKE HIS OWN INVESTIGATIONS AS TO THE SUBSURFACE CONDITIONS.

-L-			-Y1-		-Y2-	
PI Sta 13+84.61	PI Sta 18+41.86	PI Sta 23+73.99	PI Sta 11+11.91	PI Sta 10+55.65	PI Sta 11+33.75	
$\Delta = 0^{\circ}22'22.7''$ (RT)	$\Delta = 0^{\circ}07'07.4''$ (LT)	$\Delta = 0^{\circ}08'36.8''$ (RT)	$\Delta = 52^{\circ}24'29.3''$ (RT)	$\Delta = 4^{\circ}22'22.7''$ (LT)	$\Delta = 3^{\circ}31'11.3''$ (LT)	
D = 0'06'46.8"	D = 0'02'14.0"	D = 0'03'40.8"	D = 47'44'47.3"	D = 11'27'33.0"	D = 30'09'20.3"	
L = 329.90'	L = 318.92'	L = 234.00'	L = 109.76'	L = 38.16'	L = 114.47'	
T = 164.95'	T = 159.46'	T = 117.00'	T = 59.06'	T = 19.09'	T = 59.03'	
R = 50,700.00'	R = 153,900.00'	R = 93,400.00'	R = 120.00'	R = 500.00'	R = 190.00'	

SEE SHEET 12 FOR -L- PROFILE.  
SEE SHEET 13 FOR -Y- PROFILES.