

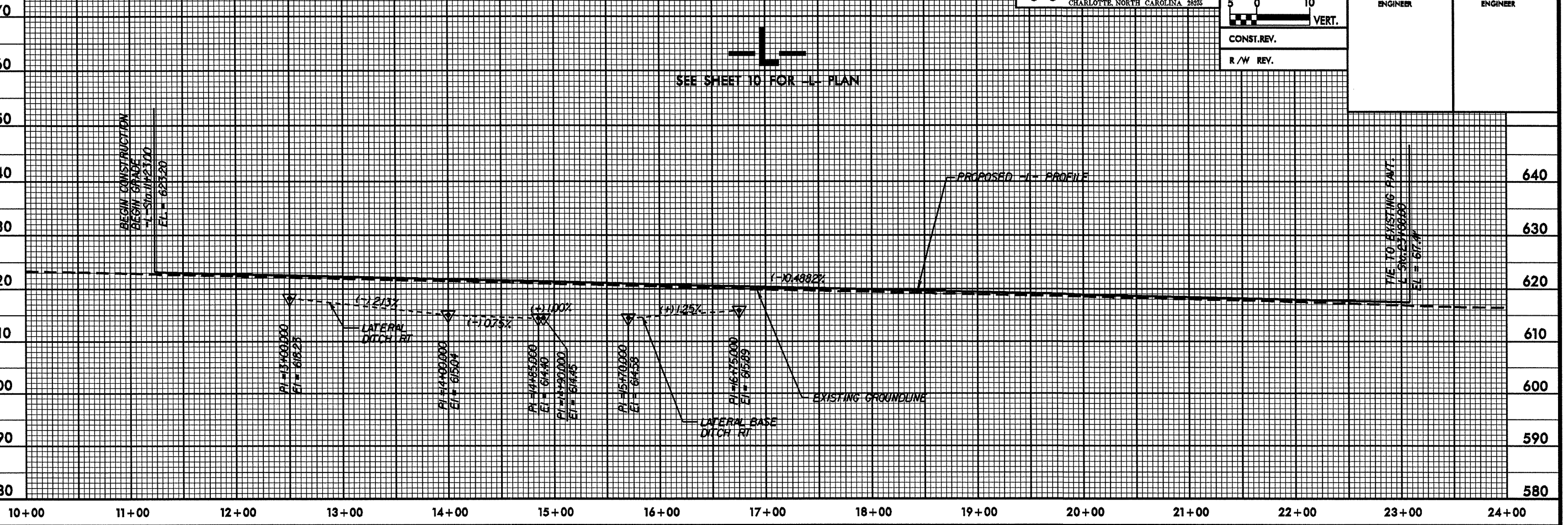
5/28/99

RALPH WHITEHEAD ASSOCIATES  
CONSULTING ENGINEERS  
P.O. BOX 36624  
CHARLOTTE, NORTH CAROLINA 28235

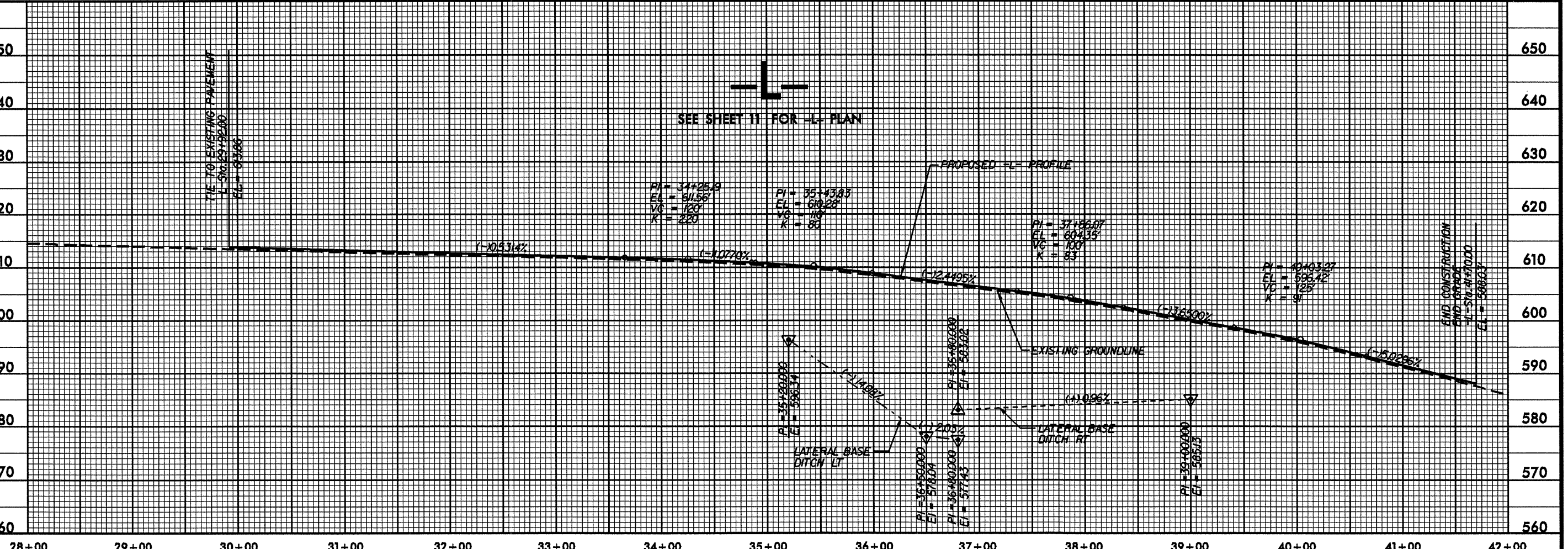
25 0 50 5 0 10 HORIZ. VERT.
CONST. REV.
R/W REV.

PROJECT REFERENCE NO. 37613, ETC.	SHEET NO. 12
ROADWAY DESIGN ENGINEER	HYDRAULICS ENGINEER

670  
660  
650  
640  
630  
620  
610  
600  
590  
580



650  
640  
630  
620  
610  
600  
590  
580  
570  
560



\*\*\*\*\*  
DATE PLOTTED  
\*\*\*\*\*