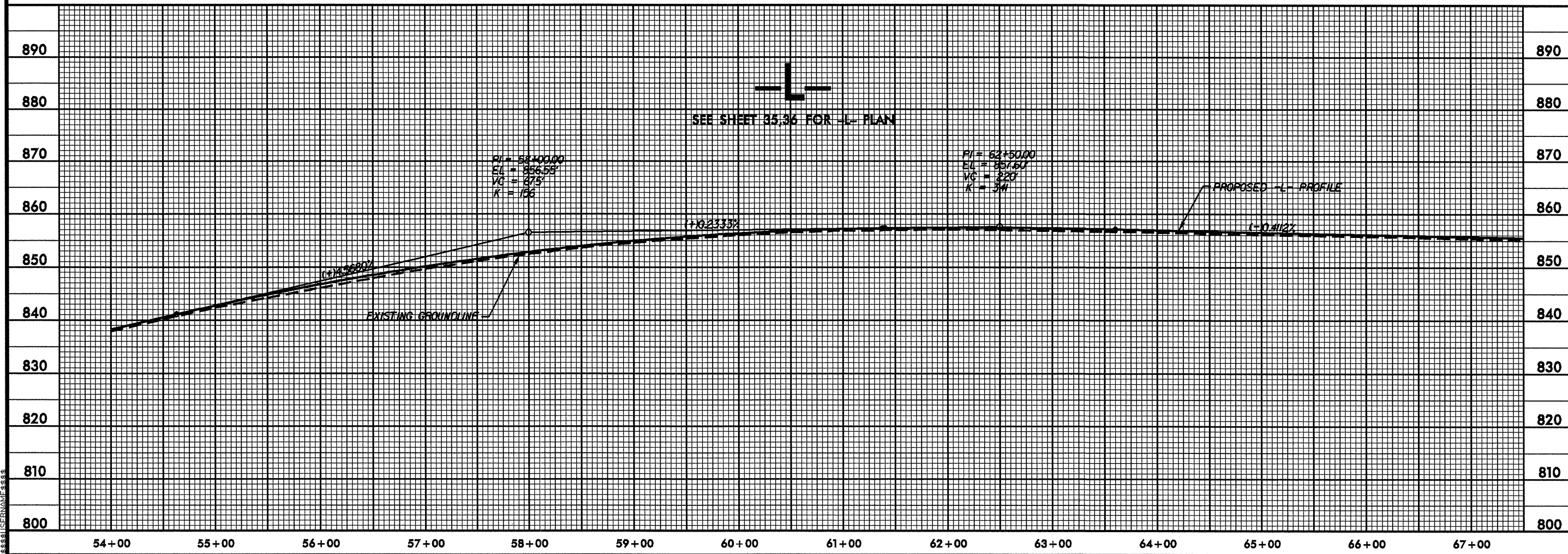
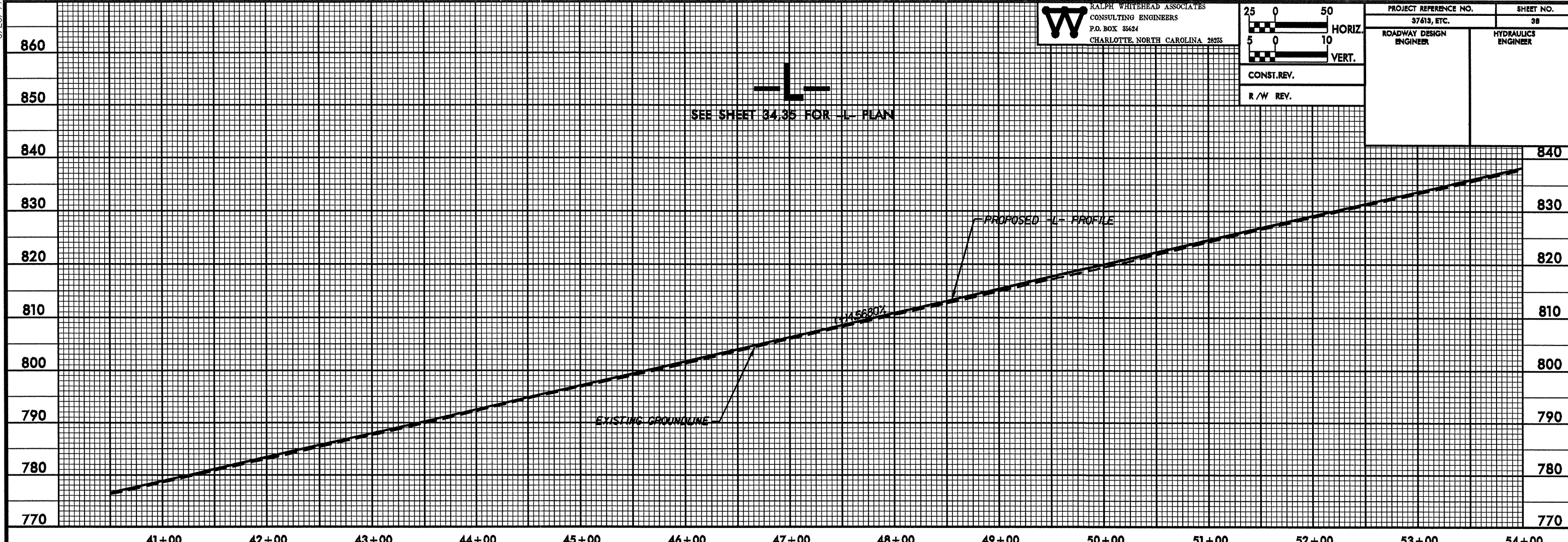


5/26/99

**W** RALPH WHITEHEAD ASSOCIATES  
CONSULTING ENGINEERS  
P.O. BOX 35624  
CHARLOTTE, NORTH CAROLINA 28235

25	0	50	HORIZ.
5	0	10	
			VERT.
CONST. REV.			
R/W REV.			

PROJECT REFERENCE NO. 37613, ETC.	SHEET NO. 38
ROADWAY DESIGN ENGINEER	HYDRAULICS ENGINEER



UNIVERSITY OF NORTH CAROLINA