

8/17/99
*****SYTIME*****
*****CON*****

REVISIONS

MAPS #1 AND #2 US 64 / SR 2098

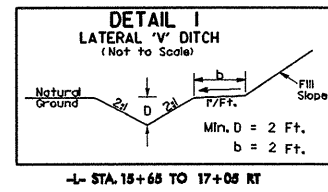
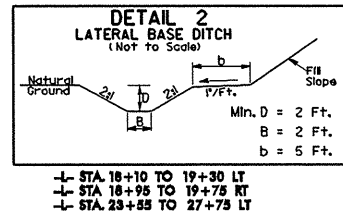
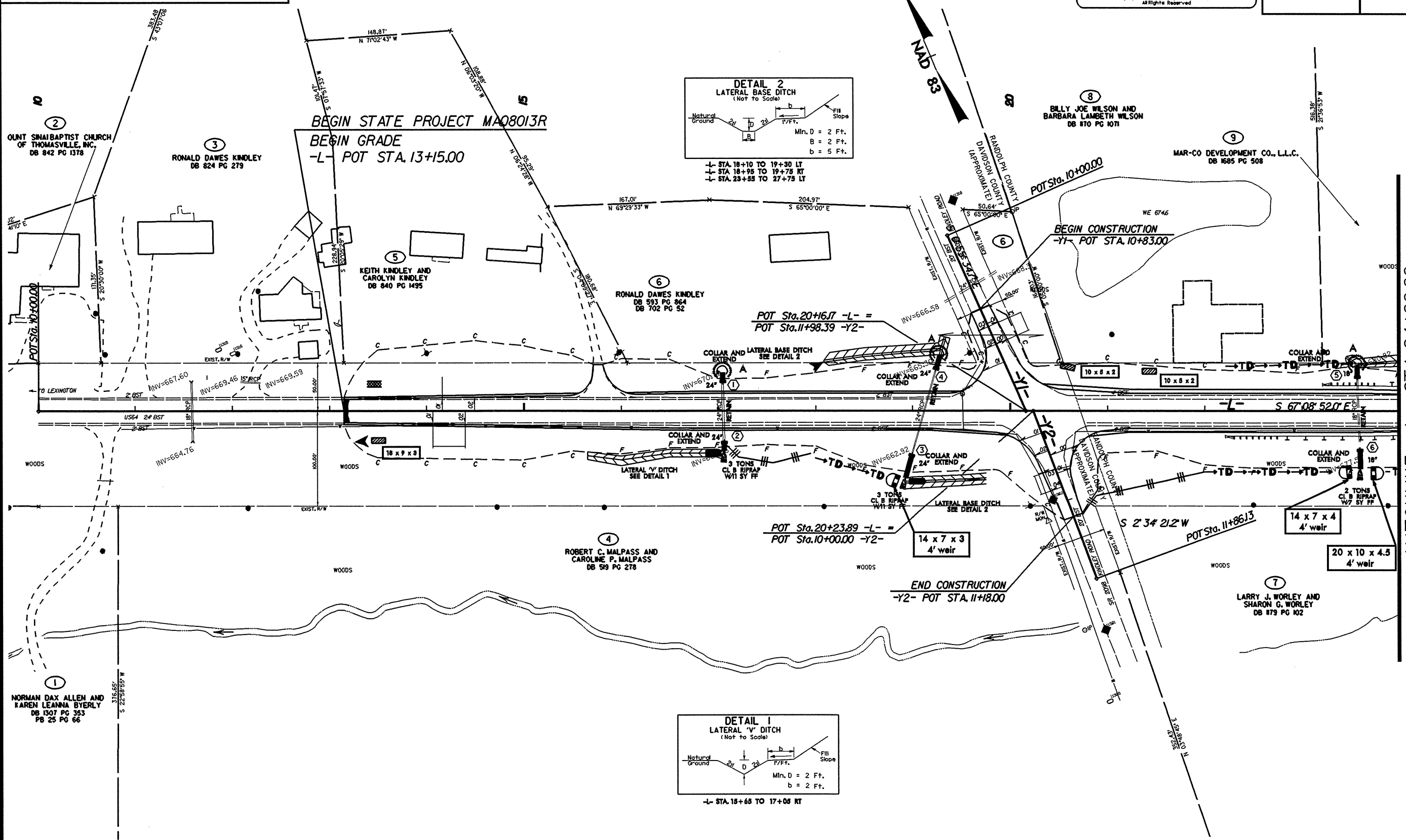
W RALPH WHITEHEAD ASSOCIATES
CONSULTING ENGINEERS
P.O. BOX 33654
CHARLOTTE, NORTH CAROLINA 28235

V&M
Vaughn & Melton
Consulting Engineers

Middlesboro, Kentucky
606-248-6800
Greeneville, Tennessee
423-639-0271
Asheville, North Carolina
828-253-2776

Copyright © 1994 Vaughn & Melton, Inc.
All Rights Reserved

PROJECT REFERENCE NO. 37618, ETC.	SHEET NO. EC-2
RW SHEET NO.	
ROADWAY DESIGN ENGINEER	HYDRAULICS ENGINEER



MATCHLINE -L- STA. 24+00.00
SEE SHEET EC-3