

8/17/99

REVISIONS

MAPS #1 AND #2 US 64 / SR 2098

W RALPH WHITEHEAD ASSOCIATES
CONSULTING ENGINEERS
P.O. BOX 55624
CHARLOTTE, NORTH CAROLINA 28255

PROJECT REFERENCE NO.
37613, ETC.

SHEET NO.
EC-3

V&M
Vaughn & Melton
Consulting Engineers

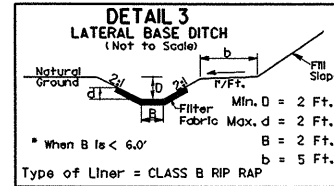
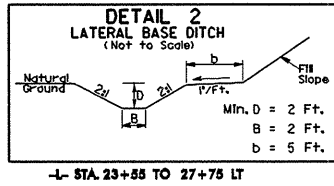
Middlesboro, Kentucky
606-248-6600
Greenville, Tennessee
423-639-0271
Asheville, North Carolina
828-253-2796

Copyright © 1994 Vaughn & Melton, Inc.
All Rights Reserved

R/W SHEET NO.

ROADWAY DESIGN ENGINEER

HYDRAULICS ENGINEER

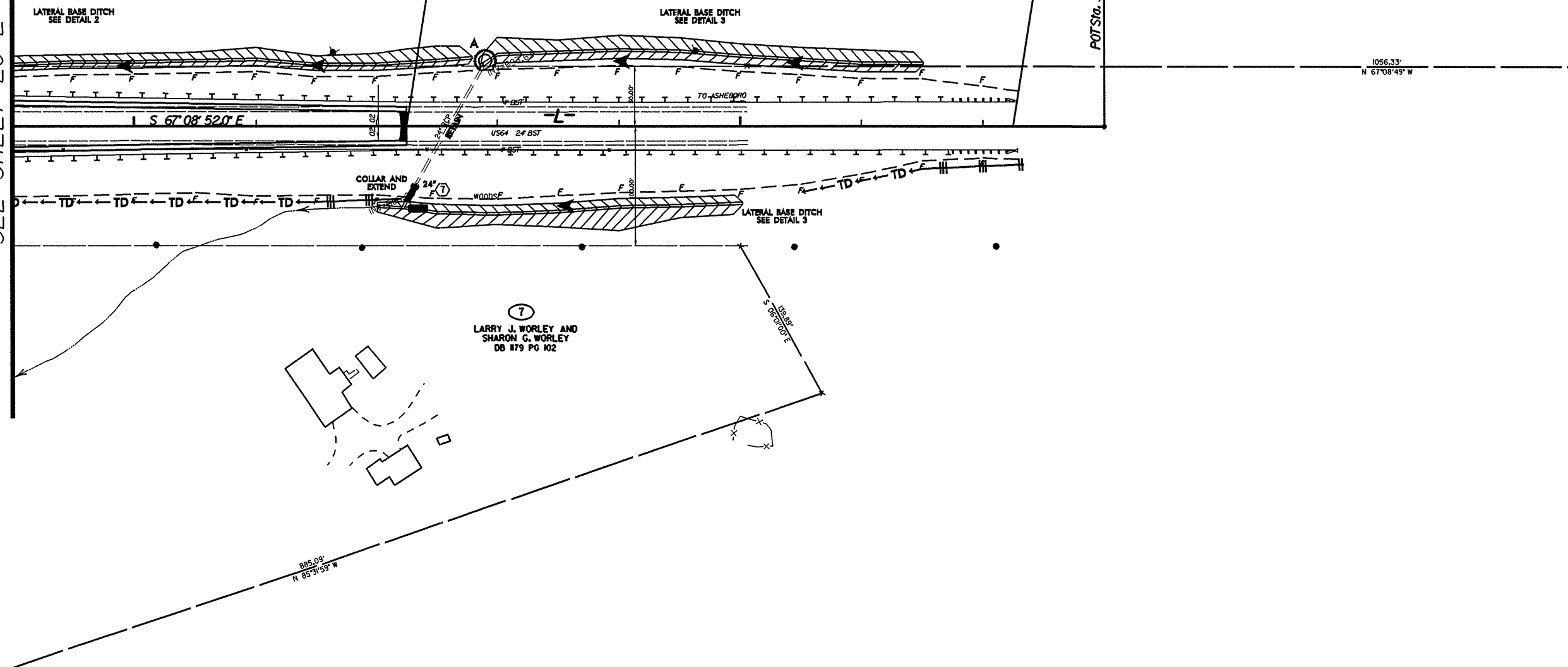


9
MAR-CO DEVELOPMENT CO., L.L.C.
DB 1685 PG 508

MATCHLINE -L- STA. 24+00.00
SEE SHEET EC-2

END GRADE
-L- POT STA. 27+25.00

END STATE PROJECT MA08013R
-L- POT STA. 32+25.00



TIME: 11:58 AM
DATE: 8/17/99
BY: [Signature]