

REVISIONS

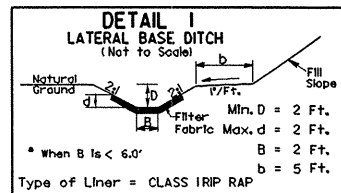
# MAP #3 US 64 / SR 1401

**W** RALPH WHITEHEAD ASSOCIATES  
CONSULTING ENGINEERS  
P.O. BOX 33624  
CHARLOTTE, NORTH CAROLINA 28235

PROJECT REFERENCE NO. 37619, ETC. SHEET NO. EC-5

**V&M**  
Vaughn & Melton  
Consulting Engineers  
Middlesboro, Kentucky 606-248-6600  
Greeneville, Tennessee 423-639-0271  
Asheville, North Carolina 828-253-2196  
Copyright © 1994 Vaughn & Melton, Inc.  
All Rights Reserved

R/W SHEET NO. ROADWAY DESIGN ENGINEER HYDRAULICS ENGINEER



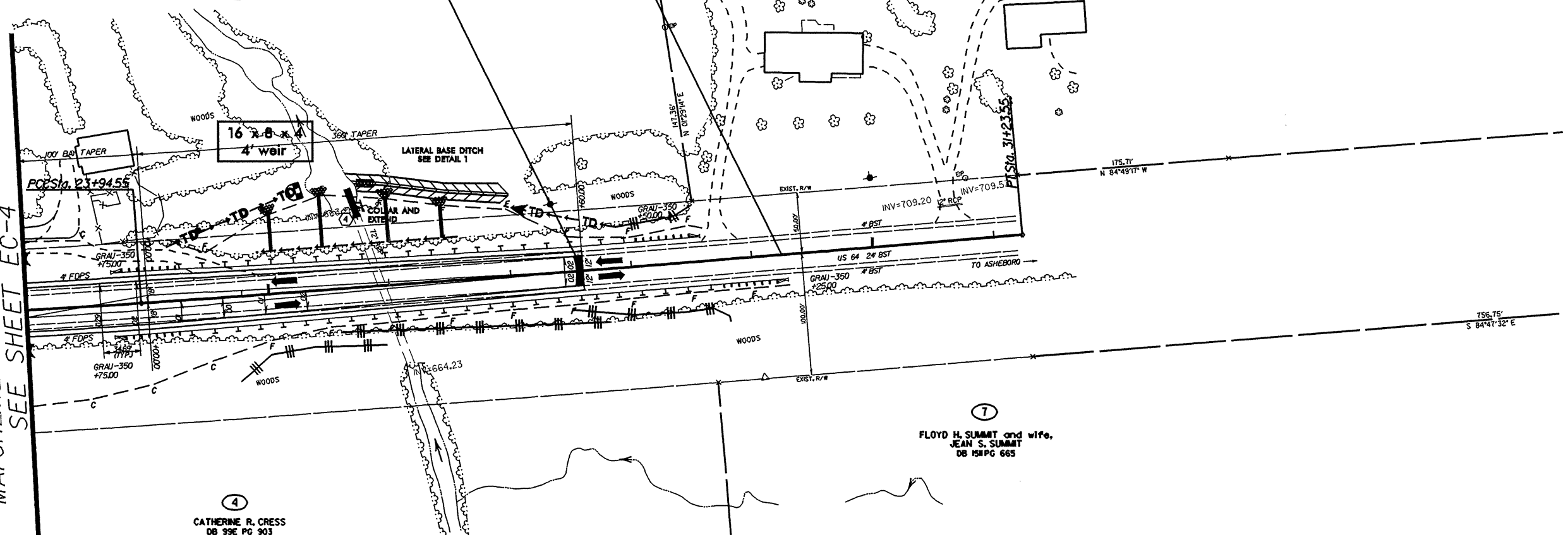
5 WAYNE MYERS and wife,  
BERNICE MYERS  
DB 645 PG 455  
DB 806 PG 133

END GRADE  
-L- POC STA. 27+60.00

END STATE PROJECT MA08013R  
-L- POC STA. 29+25.00

6 FLOYD H. SUMMIT and wife,  
BARBARA JEAN SUMMIT  
DB 991 PG 42

MATCHLINE -L- STA. 23+00.00  
SEE SHEET EC-4



4 CATHERINE R. CRESS  
DB 99C PG 903

7 FLOYD H. SUMMIT and wife,  
JEAN S. SUMMIT  
DB 151 PG 665

-L-	
PI Sta 17+48.84	PI Sta 27+59.06
$\Delta = 13^{\circ}16'21.7\"$ (LT)	$\Delta = 0^{\circ}56'45.8\"$ (LT)
D = 1'01'23.3"	D = 0'07'47.2"
L = 1,297.25'	L = 729.00'
T = 651.54'	T = 364.51'
R = 5,600.00'	R = 44,149.89'

NOTE: DITCH WIDTH REDUCED TO 6' ON Y-1

SYTIME  
SUN  
US  
\*\*\*\*\*