

8/17/99

REVISIONS

# MAP #4

## US 64 / SR 1344,1390 & SR 1311

**W** RALPH WHITEHEAD ASSOCIATES  
CONSULTING ENGINEERS  
P.O. BOX 15634  
CHARLOTTE, NORTH CAROLINA 28255

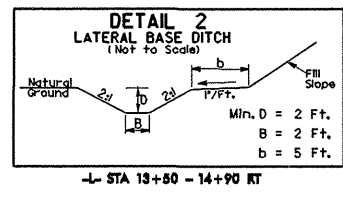
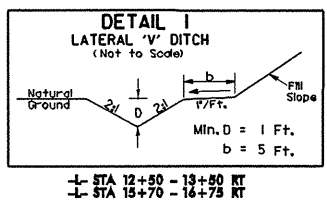
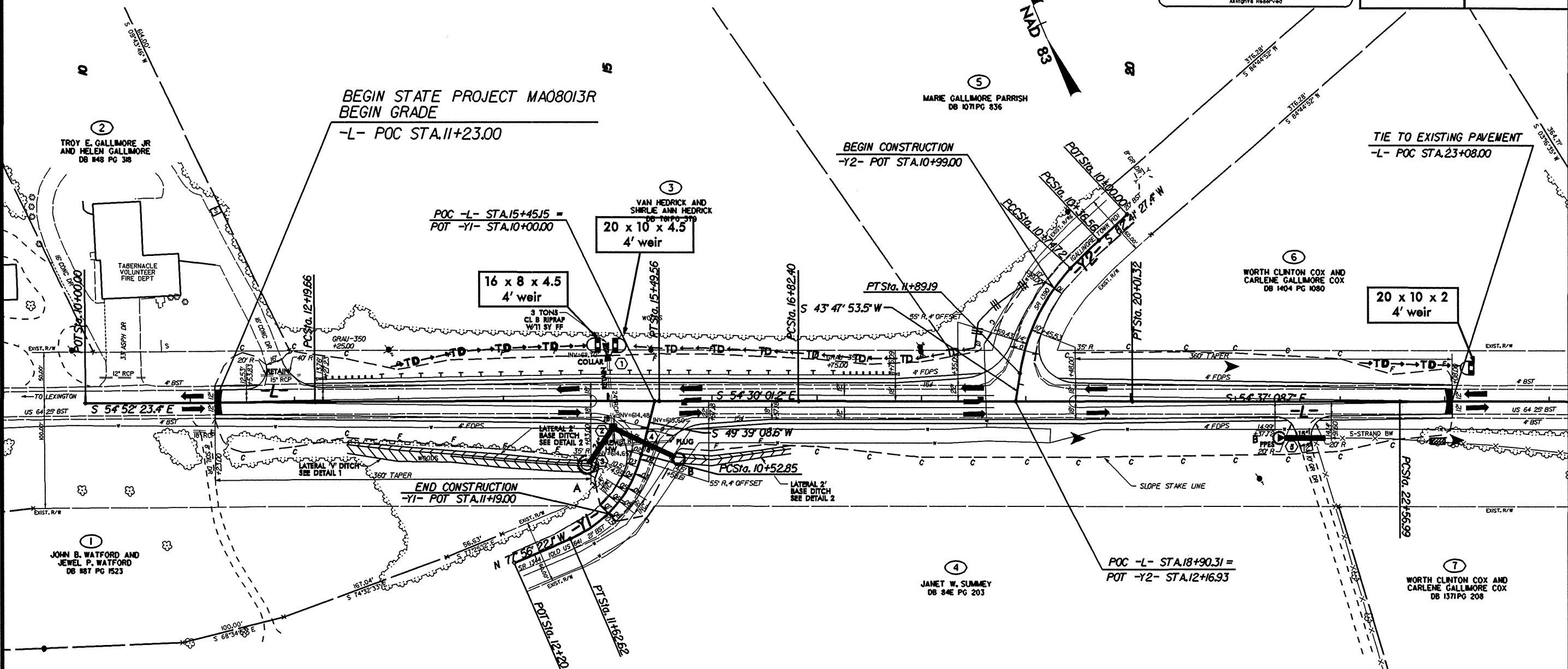
**V&M**  
Vaughn & Melton  
Consulting Engineers  
Middlesboro, Kentucky  
606-240-6500  
Greenville, Tennessee  
423-639-0271  
Asheville, North Carolina  
828-253-2796  
Copyright © 1994 Vaughn & Melton, Inc.  
All Rights Reserved

PROJECT REFERENCE NO. SHEET NO.

37613, ETC. EC-6

R/W SHEET NO.

ROADWAY DESIGN ENGINEER HYDRAULICS ENGINEER



-L-			-Y1-		-Y2-	
PI Sta 13+84.61	PI Sta 18+41.86	PI Sta 23+73.99	PI Sta 11+11.91	PI Sta 10+55.65	PI Sta 11+33.75	
$\Delta = 0' 22' 22.1''$ (RT)	$\Delta = 0' 07' 07.4''$ (LT)	$\Delta = 0' 08' 36.8''$ (RT)	$\Delta = 52' 24' 29.3''$ (RT)	$\Delta = 4' 22' 22.7''$ (LT)	$\Delta = 34' 31' 11.3''$ (LT)	
D = 0' 06' 46.8"	D = 0' 02' 14.0"	D = 0' 03' 40.8"	D = 47' 44' 47.3"	D = 11' 27' 33.0"	D = 30' 09' 20.3"	
L = 329.90'	L = 318.92'	L = 234.00'	L = 109.76'	L = 38.16'	L = 114.47'	
T = 164.95'	T = 159.46'	T = 117.00'	T = 59.06'	T = 19.09'	T = 59.03'	
R = 50,700.00'	R = 153,900.00'	R = 93,400.00'	R = 120.00'	R = 500.00'	R = 190.00'	

\*\*\*\*\*  
SYSTEMS  
\*\*\*\*\*