

REVISIONS

MAP #4

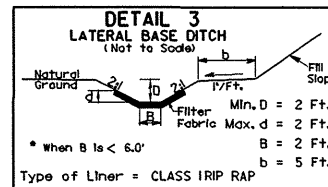
US 64 / SR 1344, 1390 & SR 1311

W RALPH WHITEHEAD ASSOCIATES
CONSULTING ENGINEERS
P.O. BOX 35624
CHARLOTTE, NORTH CAROLINA 28235

V&M Middleboro, Kentucky 606-246-6600
Greeneville, Tennessee 423-433-0071
Asheville, North Carolina 828-253-2796
Copyright © 1994 Vaughn & Melton, Inc. All Rights Reserved

PROJECT REFERENCE NO. 37613, ETC.	SHEET NO. EC-7
RW SHEET NO.	
ROADWAY DESIGN ENGINEER	HYDRAULICS ENGINEER

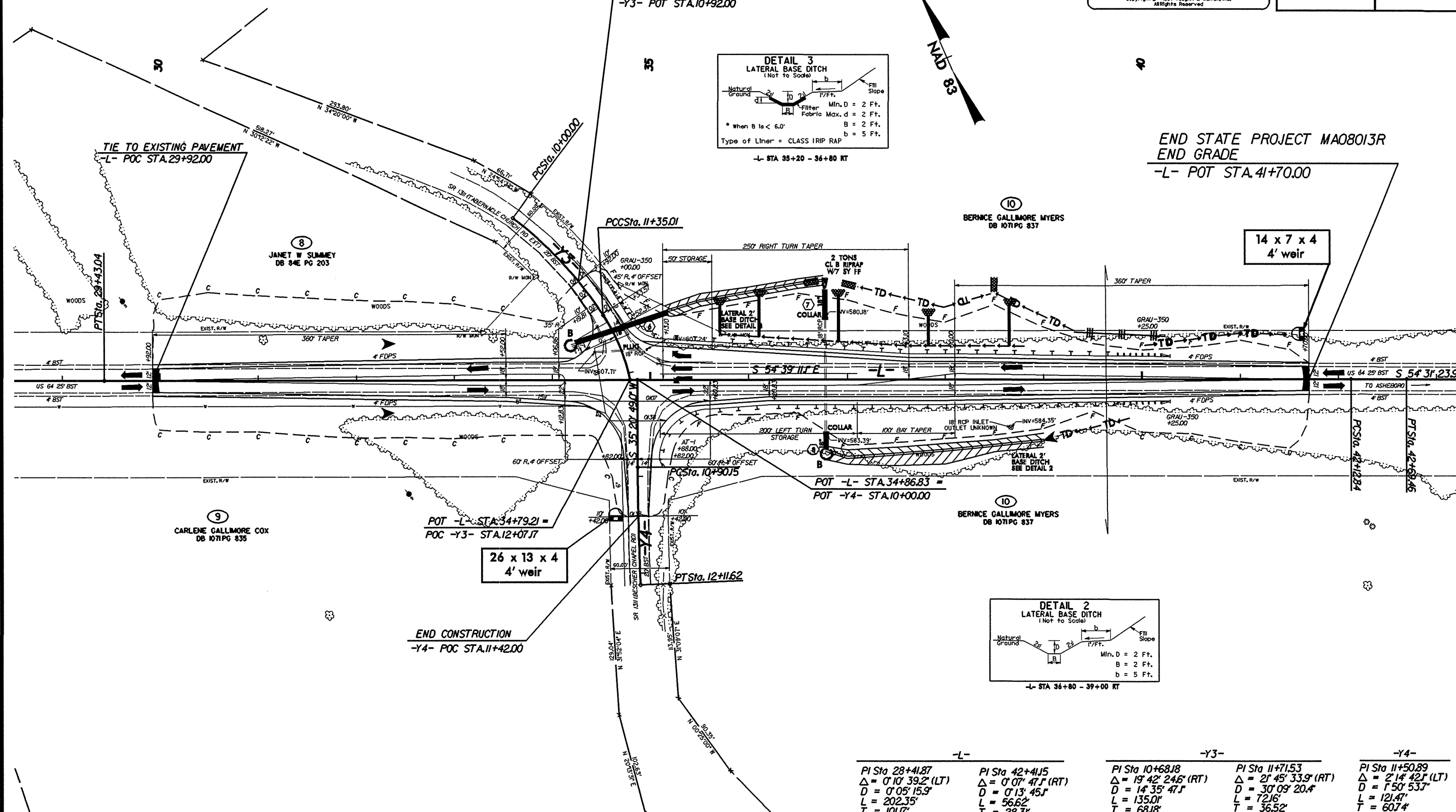
BEGIN CONSTRUCTION
-Y3- POT STA.10+92.00



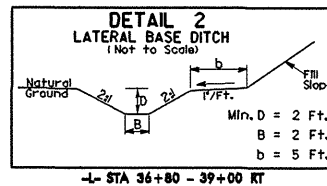
-L- STA 35+20 - 36+80 RT



END STATE PROJECT MA08013R
END GRADE
-L- POT STA.41+70.00



END CONSTRUCTION
-Y4- POC STA.11+42.00



-L- STA 36+80 - 39+00 RT

-L-		-Y3-		-Y4-	
PI Sta 28+41.87	PI Sta 42+41.5	PI Sta 10+68.8	PI Sta 11+71.53	PI Sta 11+50.89	
$\Delta = 0' 10' 39.2''$ (LT)	$\Delta = 0' 07' 47.1''$ (RT)	$\Delta = 19' 42' 24.6''$ (RT)	$\Delta = 2' 45' 33.9''$ (RT)	$\Delta = 2' 14' 42.1''$ (LT)	
D = 0' 05' 15.9"	D = 0' 13' 45.1"	D = 14' 35' 47.1"	D = 30' 09' 20.4"	D = 1' 50' 53.7"	
L = 202.35'	L = 56.62'	L = 135.01'	L = 72.16'	L = 121.47'	
T = 101.17'	T = 28.31'	T = 68.18'	T = 36.52'	T = 60.74'	

SYSTEMS
 DGN
 8/17/99