

8/17/99

REVISIONS

MAP #5 US 64 / SR 1807 / SR 1409

W RALPH WHITEHEAD ASSOCIATES
CONSULTING ENGINEERS
P.O. BOX 56624
CHARLOTTE, NORTH CAROLINA 28255

PROJECT REFERENCE NO.
37619, ETC.

SHEET NO.
EC-8

V&M
Vaughn & Melton
Consulting Engineers

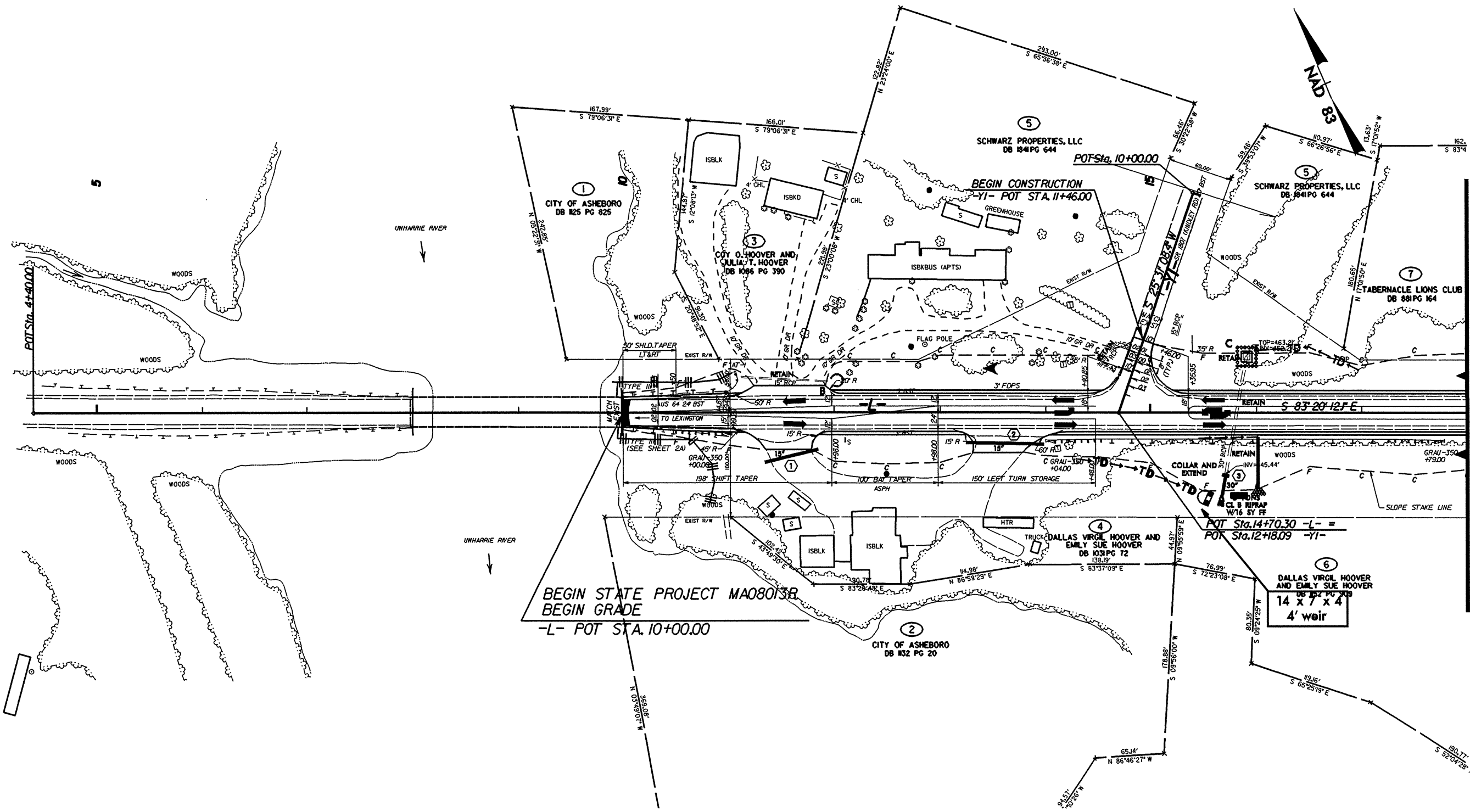
Middlesboro, Kentucky
606-248-6600
Greeneville, Tennessee
423-639-0271
Asheville, North Carolina
828-253-2196

Copyright © 1994 Vaughn & Melton, Inc.
All Rights Reserved

R/W SHEET NO.

ROADWAY DESIGN ENGINEER

HYDRAULICS ENGINEER



MATCHLINE -L- STA. 23+00.00
SEE SHEET EC-9

-Y2-
PI Sta 10+58.24
Δ = 4' 28" 02.2" (LT)
D = 8' 11" 06.4"
L = 54.58'
T = 27.30'
R = 700.00'

SYSTEMS DESIGN
CONSULTING ENGINEERS