

REVISIONS

# MAP #5

## US 64 / SR 1807 / SR 1409

**RALPH WHITEHEAD ASSOCIATES**  
CONSULTING ENGINEERS  
P.O. BOX 35624  
CHARLOTTE, NORTH CAROLINA 28255

PROJECT REFERENCE NO. 37619, ETC. SHEET NO. EC-9

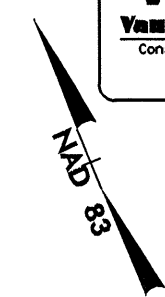
R/W SHEET NO.

ROADWAY DESIGN ENGINEER HYDRAULICS ENGINEER

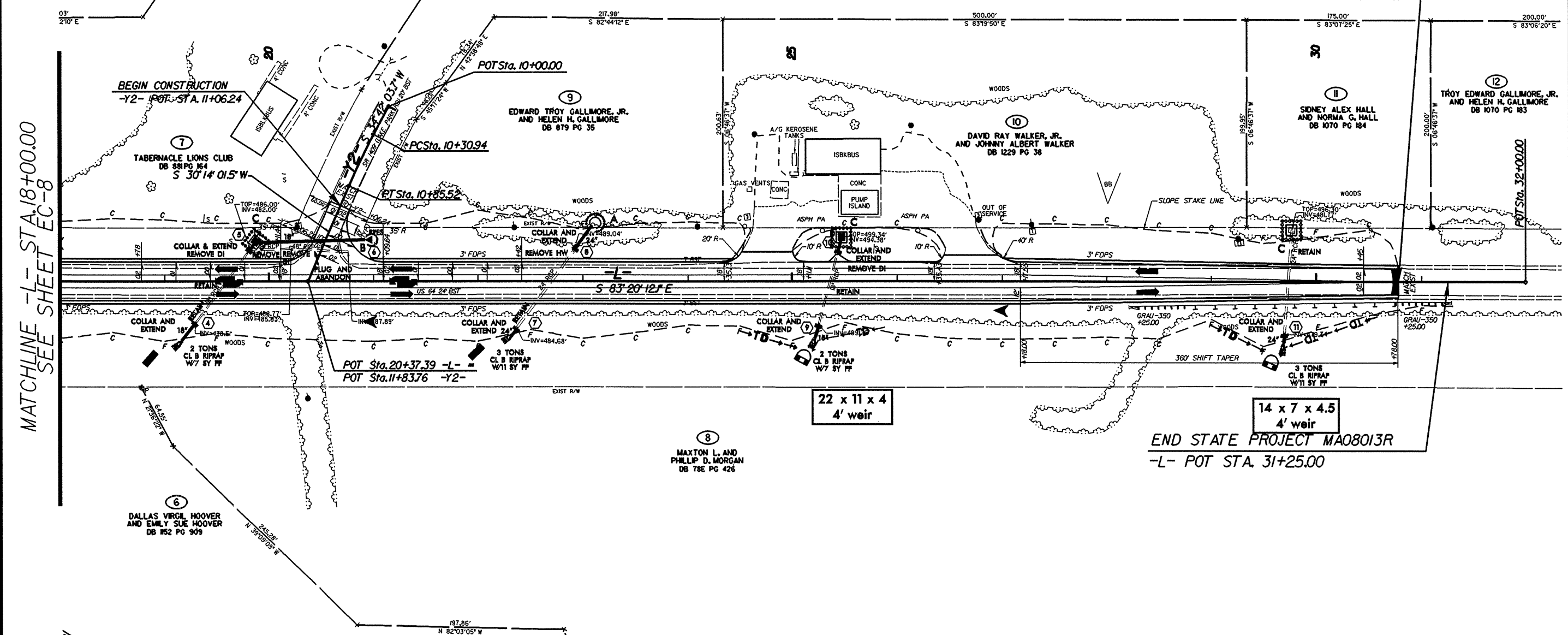
**V&M**  
**Vaughn & Melton**  
Consulting Engineers

Middlesboro, Kentucky 606-248-6500  
Greenville, Tennessee 423-639-0271  
Asheville, North Carolina 828-253-2196

Copyright © 1994 Vaughn & Melton, Inc. All Rights Reserved



END GRADE  
-L- POT STA. 30+78.00



MATCHLINE -L- STA. 18+00.00  
SEE SHEET EC-8

-Y2-

PI Sta 10+58.24  
Δ = 4' 28" 02.2" (LT)  
D = 8' 11" 06.4"  
L = 54.58'  
T = 27.30'  
R = 700.00'

B:417/99  
\$\$\$SYTIME\$\$\$  
\$\$\$LTIME\$\$\$  
\$\$\$DATE\$\$\$