

8/17/99  
SYTIME  
DESIGN

REVISIONS

# MAP #6 US 64 / SR 1382

**W** RALPH WHITEHEAD ASSOCIATES  
CONSULTING ENGINEERS  
P.O. BOX 35624  
CHARLOTTE, NORTH CAROLINA 28235

PROJECT REFERENCE NO. 37613, ETC. SHEET NO. EC-10

**V&M**  
Vaughn & Melton  
Consulting Engineers  
Middlesboro, Kentucky 606-248-6600  
Greenville, Tennessee 423-633-0271  
Asheville, North Carolina 828-253-2796  
Copyright © 1994 Vaughn & Melton, Inc. All Rights Reserved

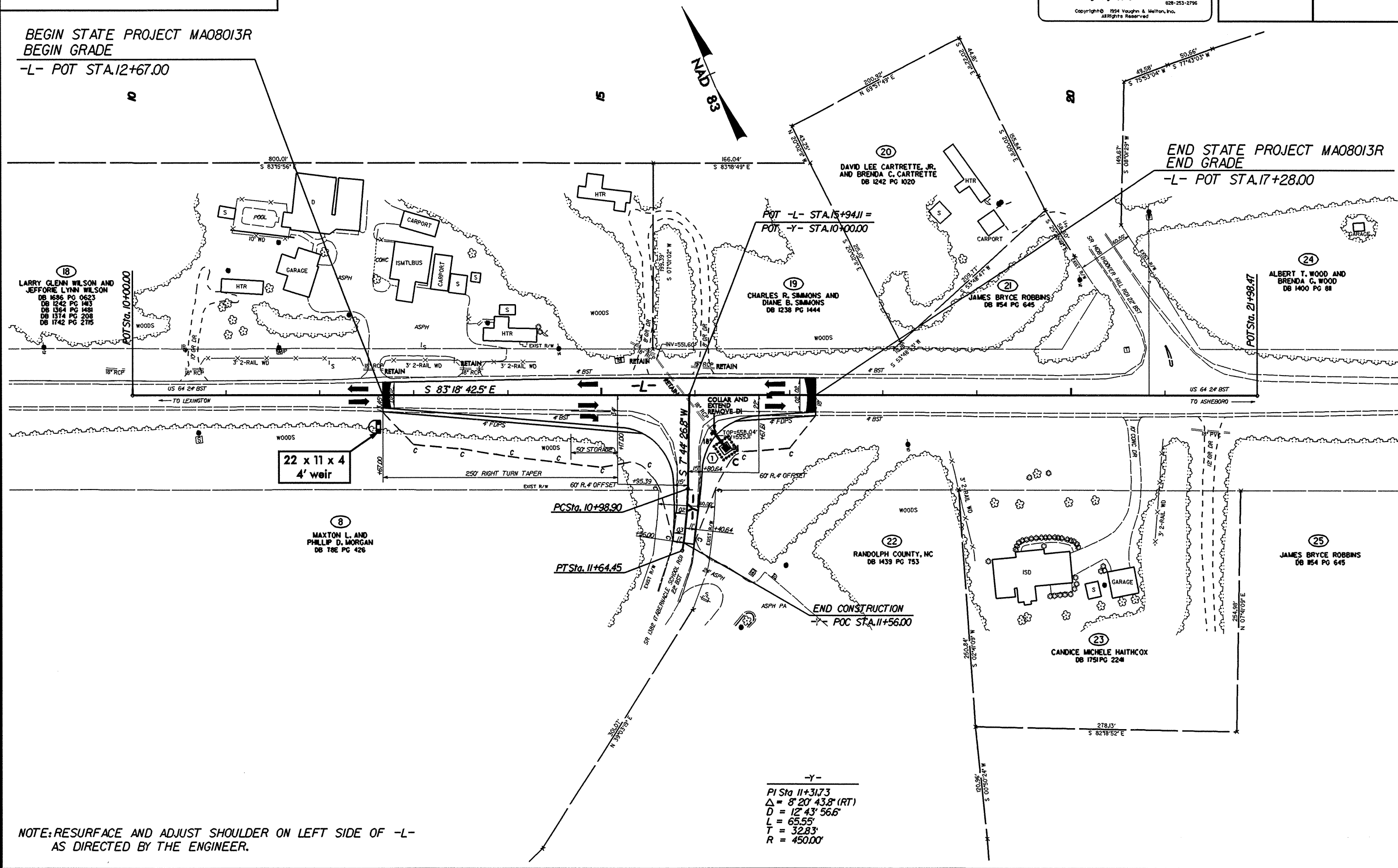
R/W SHEET NO. ROADWAY DESIGN ENGINEER HYDRAULICS ENGINEER

BEGIN STATE PROJECT MA08013R  
BEGIN GRADE

-L- POT STA.12+67.00

END STATE PROJECT MA08013R  
END GRADE

-L- POT STA.17+28.00



NOTE: RESURFACE AND ADJUST SHOULDER ON LEFT SIDE OF -L- AS DIRECTED BY THE ENGINEER.

-Y-  
PI Sta 11+317.3  
Δ = 8' 20' 43.8" (RT)  
D = 12' 43' 56.6"  
L = 65.55'  
T = 32.83'  
R = 450.00'