

REVISIONS

MAP #7

US 64 / SR 1416,1318

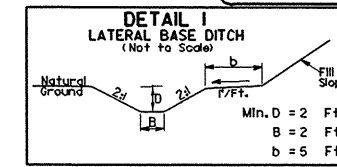
W RALPH WHITEHEAD ASSOCIATES
CONSULTING ENGINEERS
P.O. BOX 35684
CHARLOTTE, NORTH CAROLINA 28235

V&M Vaughn & Melton
Consulting Engineers

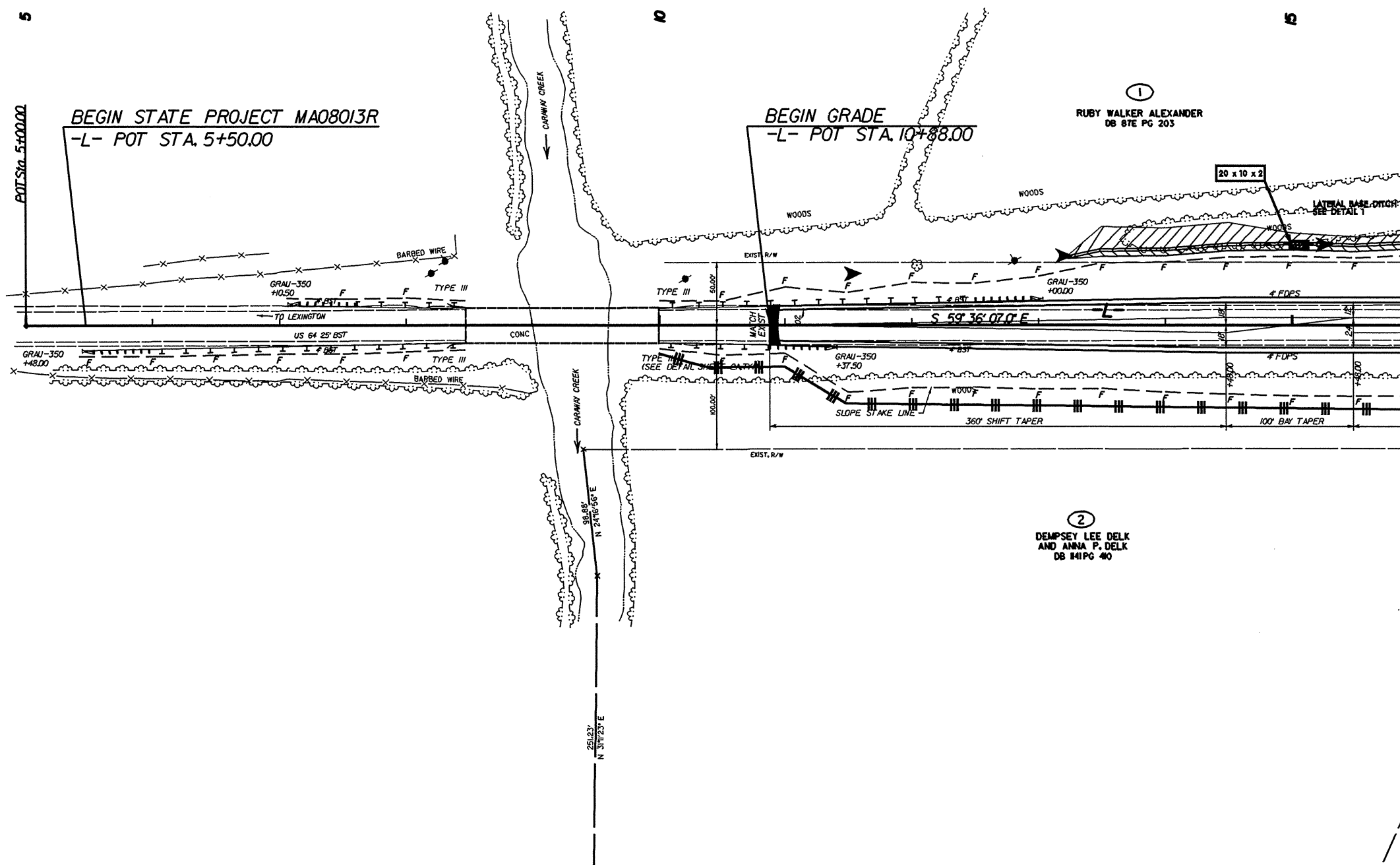
Middlesboro, Kentucky 606-248-6600
Greeneville, Tennessee 423-639-0271
Asheville, North Carolina 828-253-2796

Copyright © 1994 Vaughn & Melton, Inc. All Rights Reserved.

PROJECT REFERENCE NO. 37613, ETC.	SHEET NO. EC-11
RW SHEET NO.	
ROADWAY DESIGN ENGINEER	HYDRAULICS ENGINEER



-L- STA 13+25 TO 17+10 LT



MATCHLINE -L- STA. 16+00.00
SEE SHEET EC-12

②
DEMPSEY LEE DELK
AND ANNA P. DELK
DB 141 PG 40

8/17/95
STATIONING
US 64 25' BST
CONC
US 64 25' BST
S 59° 36' 07" E
S 59° 36' 07" E
360' SHIFT TAPER
100' BAY TAPER
281.937' N 31° 23' E
38.88' N 24° 56' E