

REVISIONS

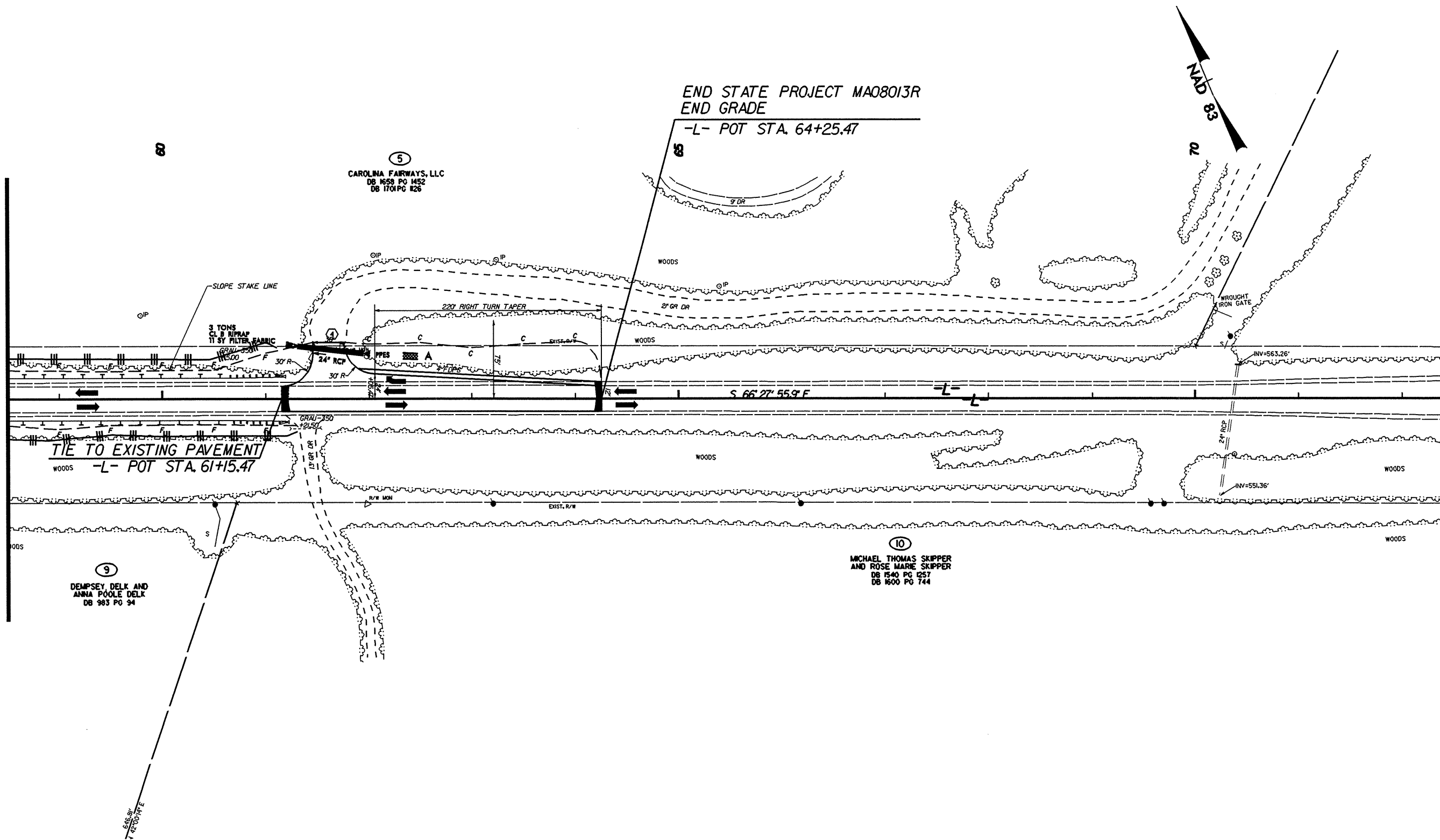
MAP #7 US 64 / SR 1416,1318

W RALPH WHITEHEAD ASSOCIATES
CONSULTING ENGINEERS
P.O. BOX 55624
CHARLOTTE, NORTH CAROLINA 28255

V&M Middleboro,
Kentucky
606-248-6600
Greeneville,
Tennessee
423-639-0271
Asheville,
North Carolina
828-253-2795
Vaughn & Melton
Consulting Engineers
Copyright © 1994 Vaughn & Melton, Inc.
All Rights Reserved

PROJECT REFERENCE NO. 37613, ETC.		SHEET NO. EC-14
RW SHEET NO.		
ROADWAY DESIGN ENGINEER	HYDRAULICS ENGINEER	

MATCHLINE -L- STA. 58+50.00
SEE SHEET EC-13



END STATE PROJECT MA08013R
END GRADE

-L- POT STA. 64+25.47

5
CAROLINA FAIRWAYS, LLC
DB 1659 PG 1452
DB 1701 PG 126

9
DEMPSEY DELK AND
ANNA POOLE DELK
DB 903 PG 94

10
MICHAEL THOMAS SKIPPER
AND ROSE MARE SKIPPER
DB 1540 PG 1257
DB 1600 PG 744



B.17/99

SYTIME
LINES
USERS