

8/17/99

REVISIONS

R RALPH WHITEHEAD ASSOCIATES
CONSULTING ENGINEERS
P.O. BOX 35624
CHARLOTTE, NORTH CAROLINA 28255

V&M
Vaughn & Melton
Consulting Engineers

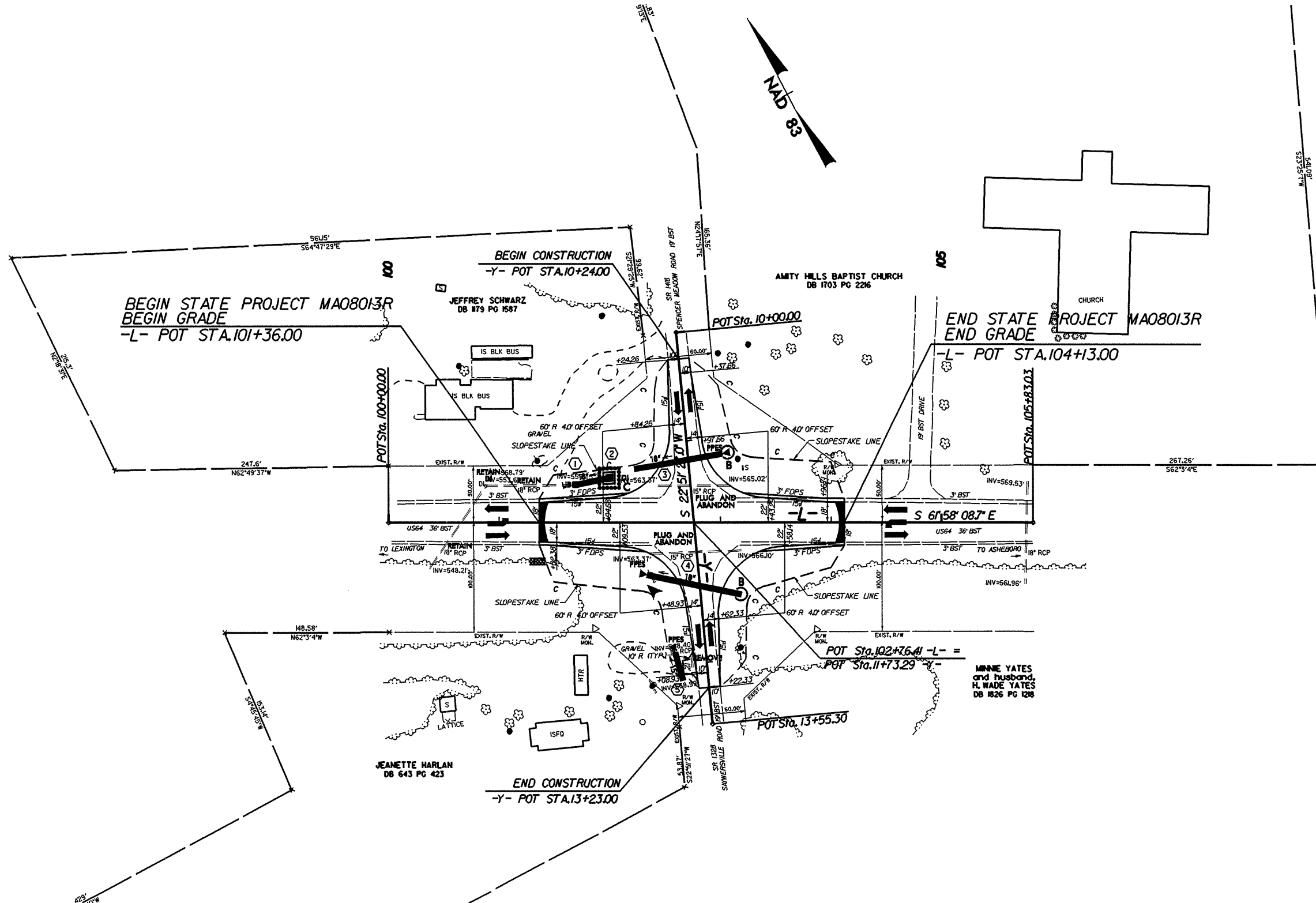
Middlesboro, Kentucky
606-248-6600
 Greeneville, Tennessee
423-639-0271
 Asheville, North Carolina
828-263-2796

Copyright © 1994 Vaughn & Melton, Inc.
All Rights Reserved

PROJECT REFERENCE NO.	SHEET NO.
37613, ETC.	EC-15
R/W SHEET NO.	
ROADWAY DESIGN ENGINEER	HYDRAULICS ENGINEER

MAP #8

US 64 / SR 1418



 SYSTEMS
 LEASING
