

8/17/99

REVISIONS

# MAP #9 US 64 / SR 1419

**W** RALPH WHITEHEAD ASSOCIATES  
CONSULTING ENGINEERS  
P.O. BOX 35624  
CHARLOTTE, NORTH CAROLINA 28255

PROJECT REFERENCE NO.  
37619, ETC.

SHEET NO.  
EC-16

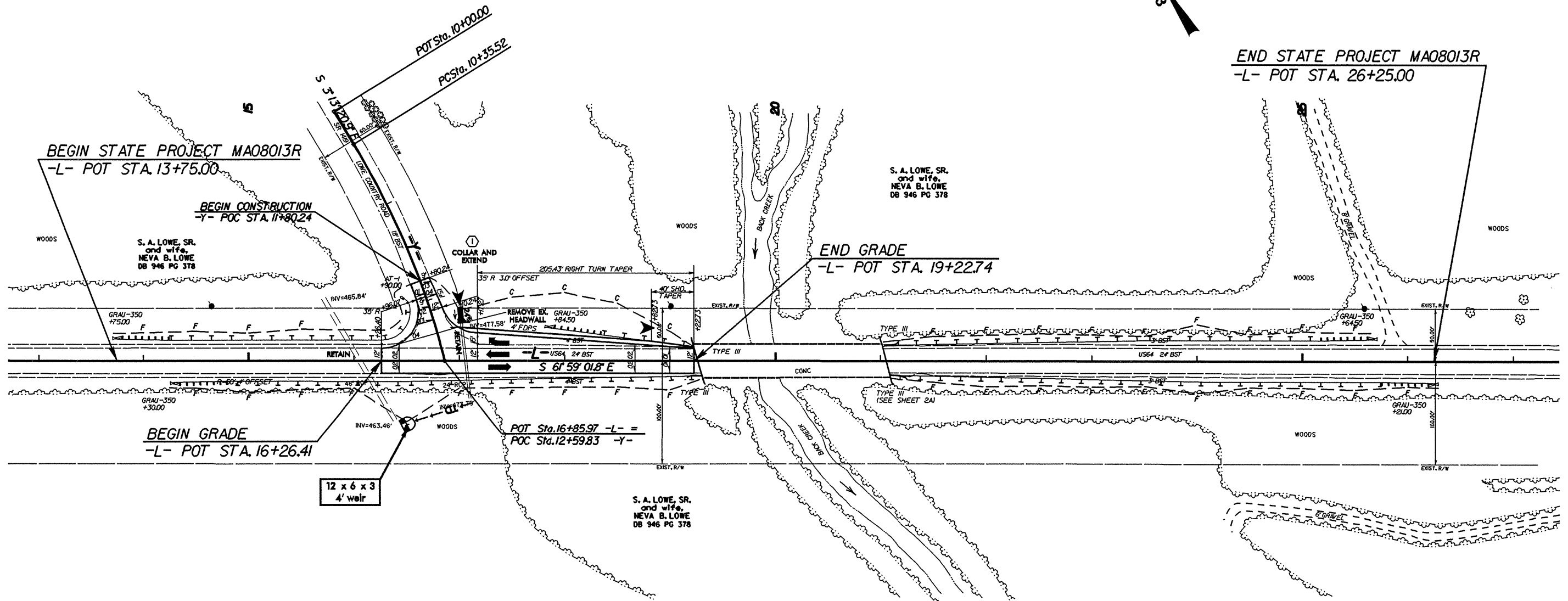
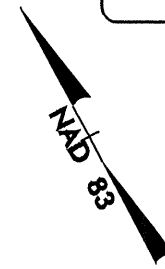
**V&M**  
Vaughn & Melton  
Consulting Engineers

Middlesboro, Kentucky  
606-248-6600  
Greenville, Tennessee  
423-639-0271  
Asheville, North Carolina  
828-253-2796

Copyright © 1994 Vaughn & Melton, Inc.  
All Rights Reserved

R/W SHEET NO.  
ROADWAY DESIGN ENGINEER

HYDRAULICS ENGINEER



NOTE: RESURFACE AND ADJUST SHOULDER ON RIGHT SIDE OF -L- AS DIRECTED BY THE ENGINEER.

-Y-  
PI Sta 11+48.55  
 $\Delta = 17^{\circ} 23' 02.8\" (RT)$   
D = 7' 45' 00.0"  
L = 224.31'  
T = 113.02'  
R = 739.30'

SYTIME: 11/11/99 10:00 AM