

REVISIONS

# MAP #11 US 64 / SR 1424

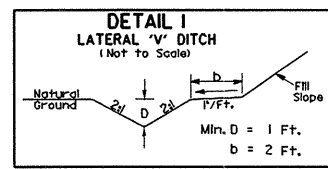
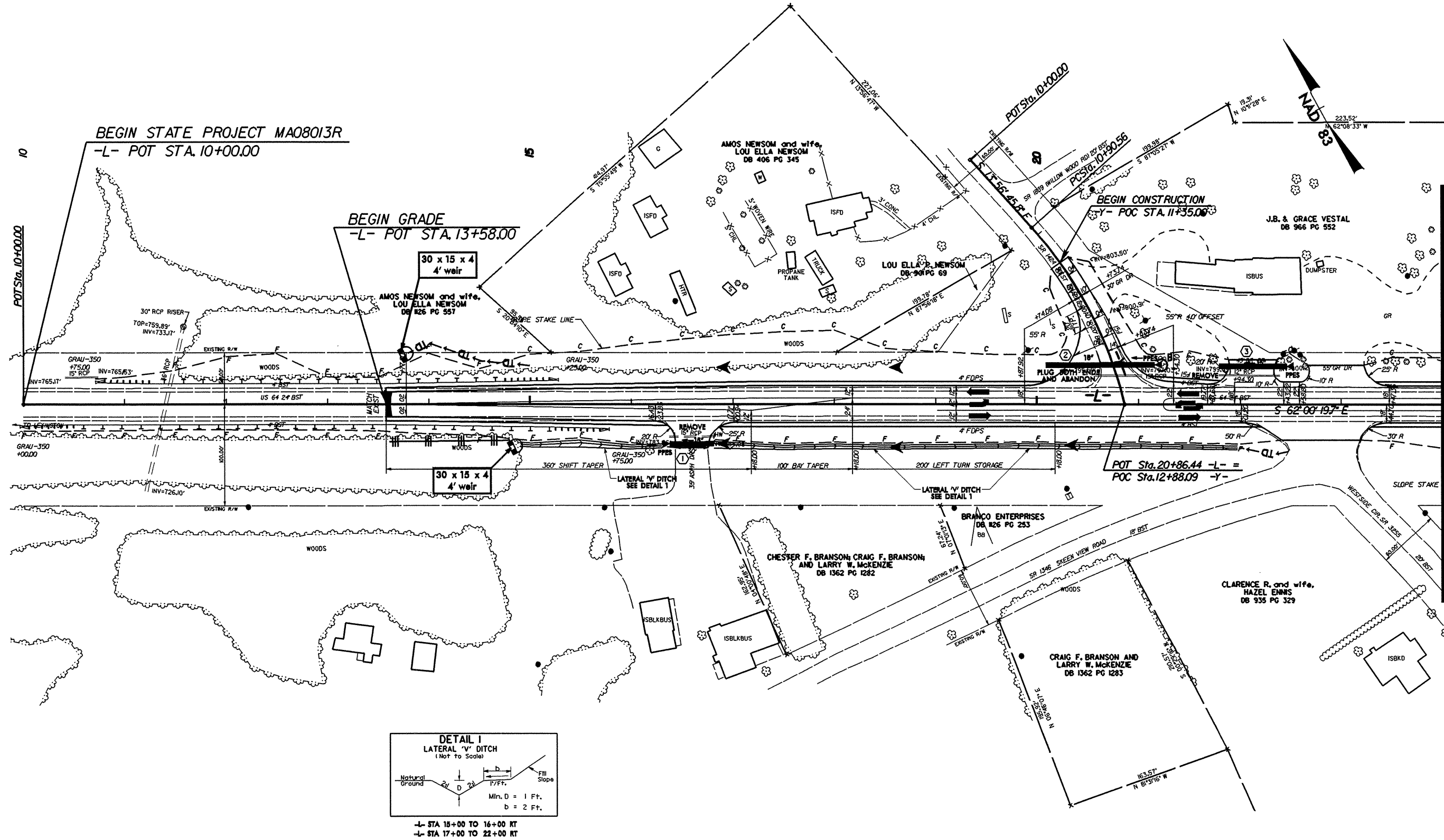
**W** RALPH WHITEHEAD ASSOCIATES  
CONSULTING ENGINEERS  
P.O. BOX 25624  
CHARLOTTE, NORTH CAROLINA 28255

PROJECT REFERENCE NO. 37613, ETC.		SHEET NO. EC-18
R/W SHEET NO.		
ROADWAY DESIGN ENGINEER	HYDRAULICS ENGINEER	

**V&M**  
Vaughn & Melton  
Consulting Engineers

Middlesboro, Kentucky 606-248-6600  
Greenville, Tennessee 423-639-0271  
Asheville, North Carolina 828-253-2756

Copyright © 1994 Vaughn & Melton, Inc.  
All Rights Reserved



-L- STA 15+00 TO 16+00 KT  
-L- STA 17+00 TO 22+00 KT

MATCHLINE -L- STA. 27+00.00  
SEE SHEET EC-19

8/17/99  
SYSTEMS DESIGN  
PLANNING