

8/17/99

REVISIONS

MAP #11 US 64 / SR 1424

W RALPH WHITEHEAD ASSOCIATES
CONSULTING ENGINEERS
P.O. BOX 35624
CHARLOTTE, NORTH CAROLINA 28235

PROJECT REFERENCE NO.	SHEET NO.
37613, ETC.	EC-20

V&M
Vaughn & Melton
Consulting Engineers

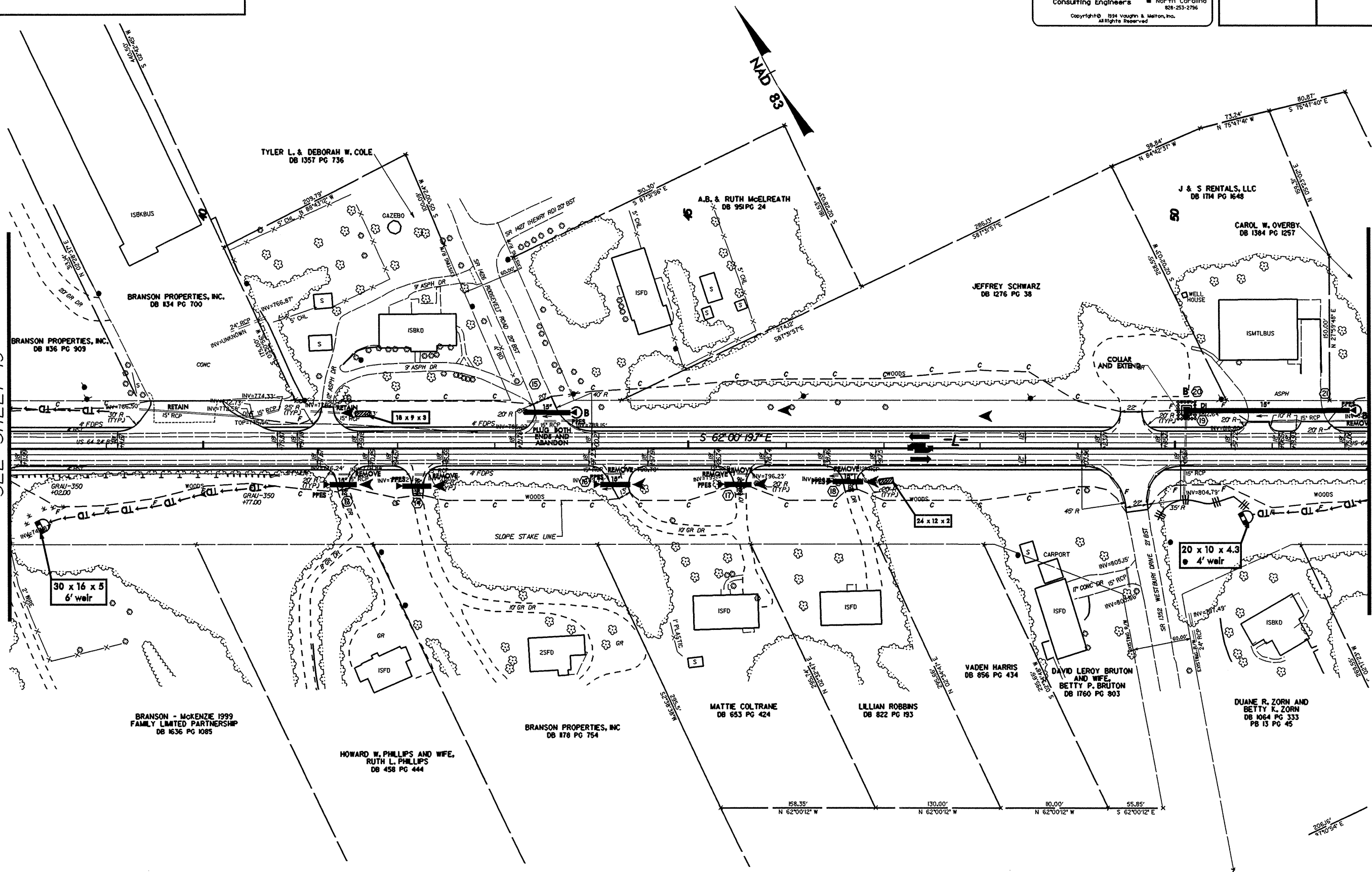
Middlesboro, Kentucky
606-248-6600
Greenville, Tennessee
423-639-0271
Asheville, North Carolina
828-253-2796

Copyright © 1994 Vaughn & Melton, Inc.
All Rights Reserved.

RAW SHEET NO.	
ROADWAY DESIGN ENGINEER	HYDRAULICS ENGINEER

MATCHLINE -L- STA. 38+00.00
SEE SHEET 19

MATCHLINE -L- STA. 52+00.00
SEE SHEET 21



SYTIME
C:\PROJECTS\990818\990818.DWG
8/17/99 10:00 AM