

B.17/99

REVISIONS

MAP #11 US 64 / SR 1424

W RALPH WHITEHEAD ASSOCIATES
CONSULTING ENGINEERS
P.O. BOX 35624
CHARLOTTE, NORTH CAROLINA 28235

PROJECT REFERENCE NO.
37613, ETC.

SHEET NO.
EC-21

RW SHEET NO.
ROADWAY DESIGN ENGINEER

HYDRAULICS ENGINEER

V&M
Vaughn & Melton
Consulting Engineers

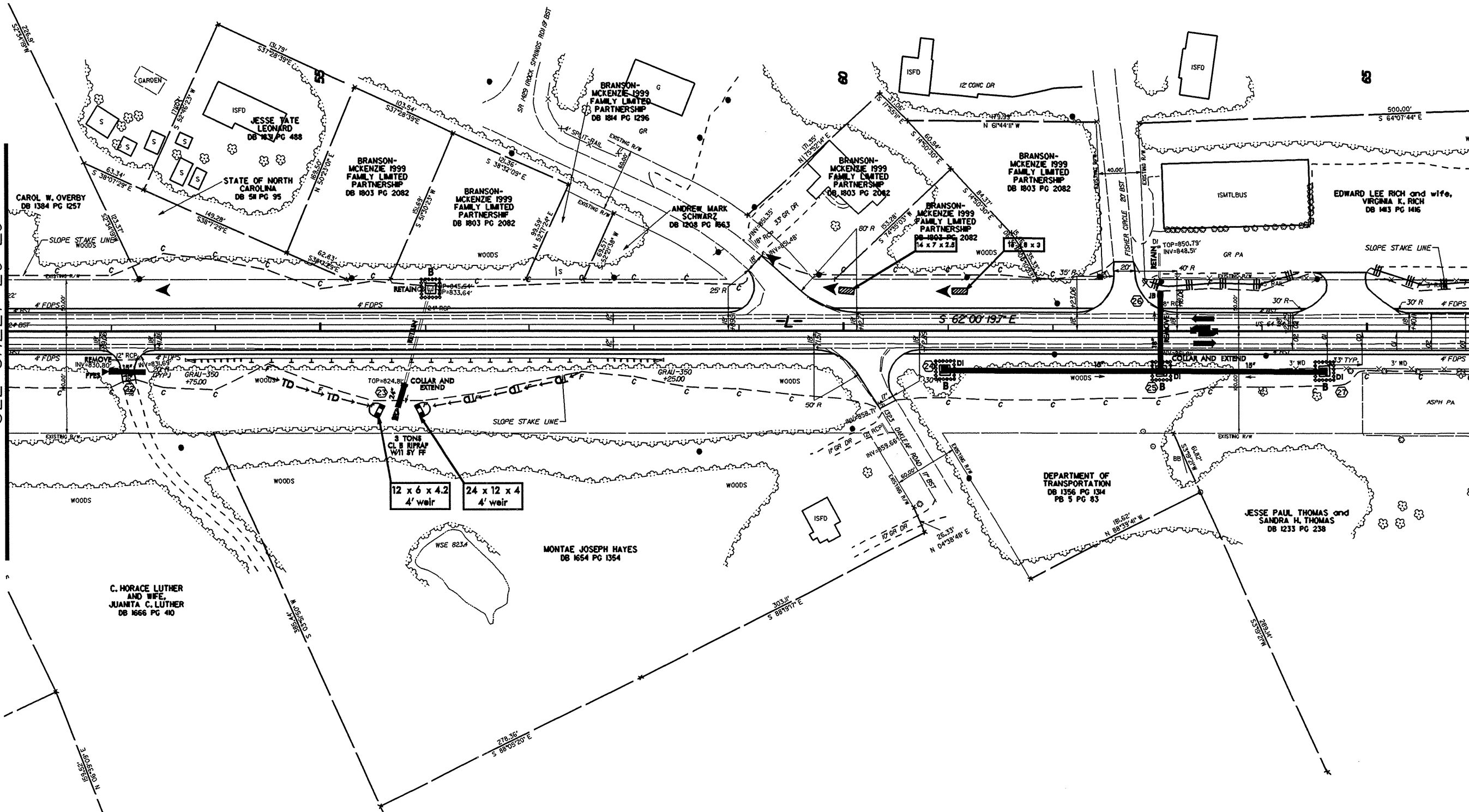
- Middlesboro, Kentucky 606-248-6600
- Greenville, Tennessee 423-639-0271
- Asheville, North Carolina 828-253-2786

Copyright © 1994 Vaughn & Melton, Inc.
All Rights Reserved.

NAD 83

MATCHLINE -L- STA.52+00.00
SEE SHEET EC-20

MATCHLINE -L- STA.66+00.00
SEE SHEET EC-22



SYTIME
LEWIS
C. LUTHER