

PHASE THREE

PROJ. REFERENCE NO. B-3445	SHEET NO. TCP-5
-------------------------------	--------------------

STEP 1

USING TEMPORARY LANE CLOSURES AND ROADWAY STANDARD DRAWING 1101.02, SHEET 1 OF 7,

- INSTALL TEMPORARY PAVEMENT MARKINGS AT THE FOLLOWING LOCATIONS:
-L- STA. 17+85 +/- TO -L- STA. 30+50 +/-
- REMOVE CONFLICTING PAVEMENT MARKING AND SHIFT ALL TRAFFIC INTO TEMPORARY TRAFFIC PATTERN.

STEP 2

AWAY FROM TRAFFIC,

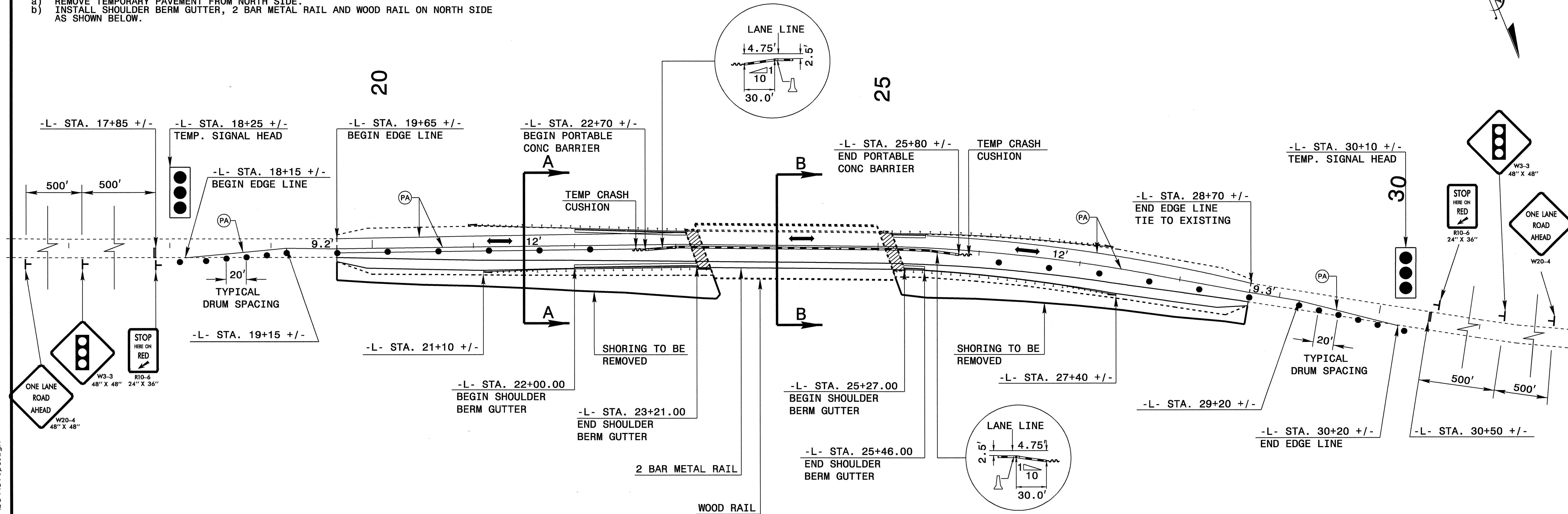
- REMOVE TEMPORARY PAVEMENT FROM NORTH SIDE.
- INSTALL SHOULDER BERM GUTTER, 2 BAR METAL RAIL AND WOOD RAIL ON NORTH SIDE AS SHOWN BELOW.

STEP 3

COMPLETE EQUILIBRIUM PIPE INSTALLATION.

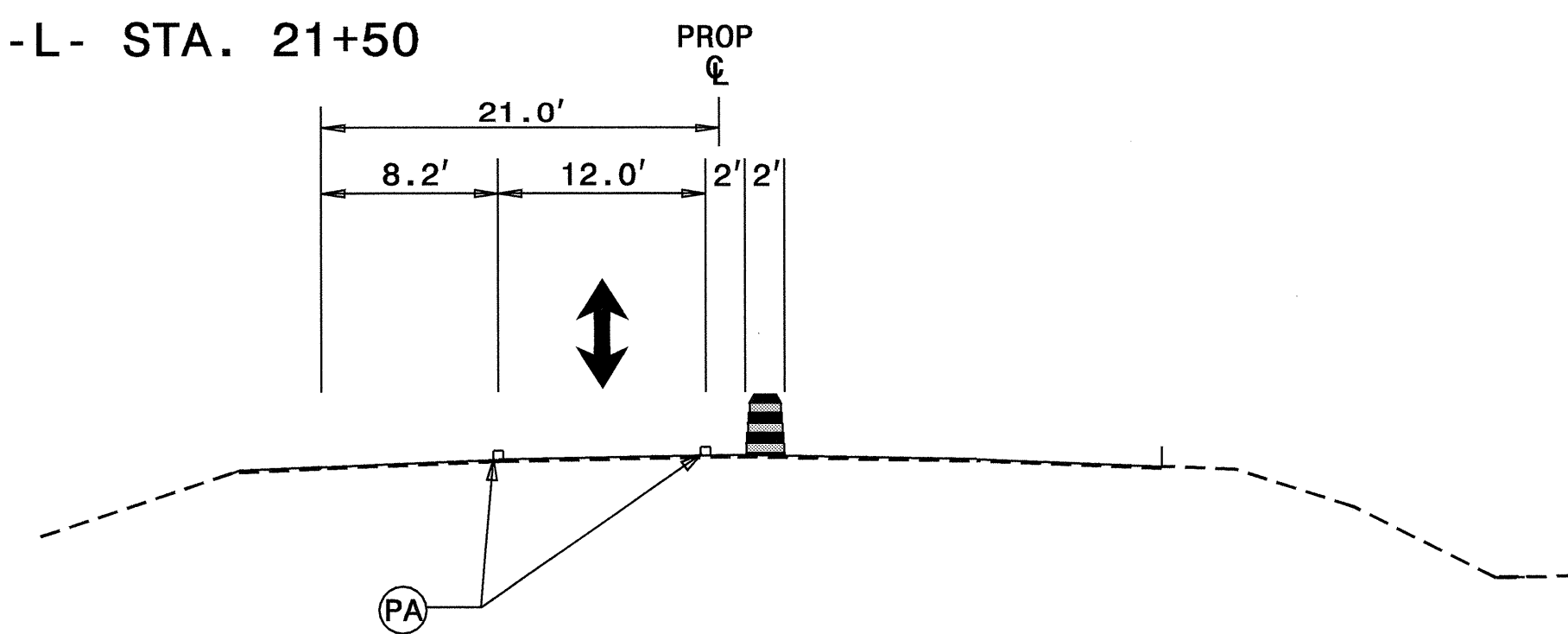
STEP 4

- USING TEMPORARY LANE CLOSURES AND ROADWAY STANDARD DRAWING 1101.02, SHEET 1 OF 7, AND REFERRING TO SHEET PM-1, PLACE FINAL SURFACE COURSE, AND FINAL PAVEMENT MARKINGS AT THE FOLLOWING LOCATIONS:
-L- STA. 17+00 +/- TO -L- STA. 31+00 +/-
- REMOVE TEMPORARY TRAFFIC SIGNALS AND TRAFFIC CONTROL DEVICES. SHIFT ALL TRAFFIC INTO FINAL TRAFFIC PATTERN.



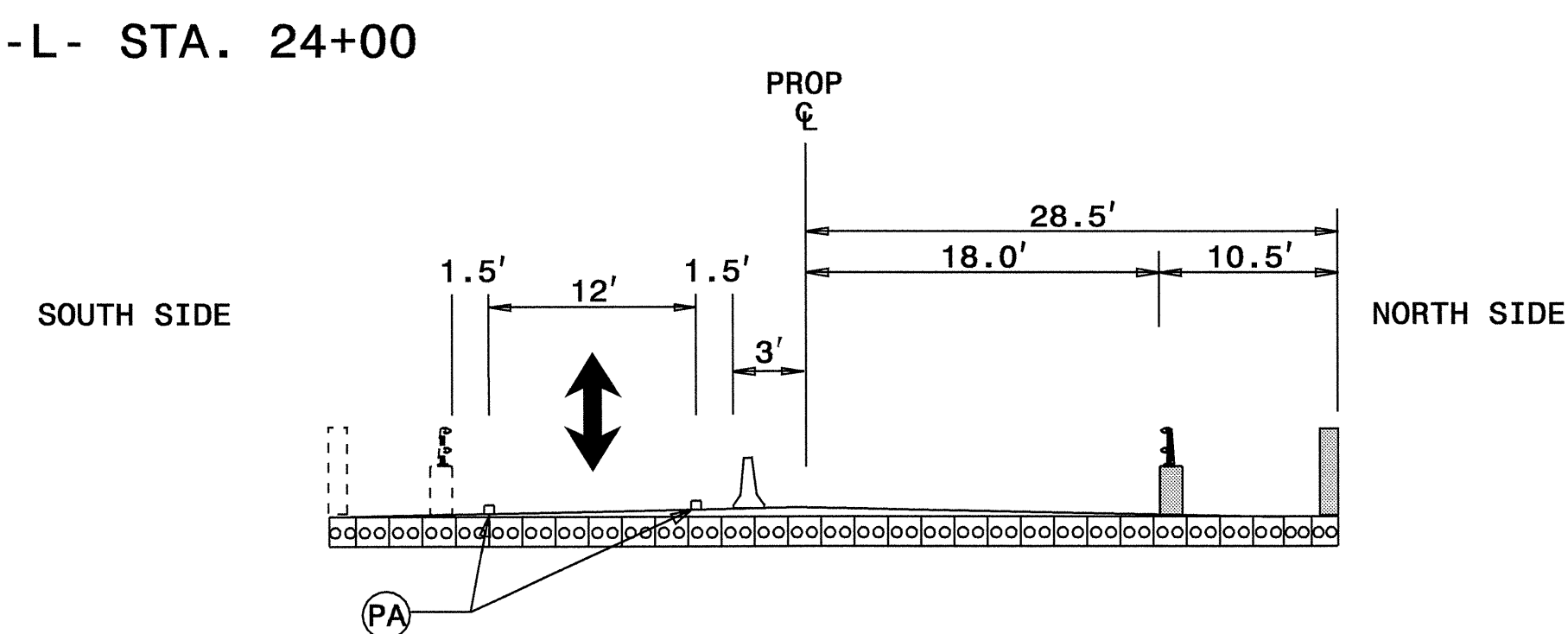
SECTION A-A

-L- STA. 21+50



SECTION B-B

-L- STA. 24+00



28-FEB-2006 08:49 \\ets-cctf503\B3445\TrafficControl\top\Final_wztou_plans\B3445\top5.dgn JKuse AT WZTC224105

APPROVED: <i>Jessica D. Kuse</i> DATE: 2/23/06	PHASE THREE	
	SCALE: N.A.	
	DATE: 1/05/06	
	DWG. BY: RMG	
	DESIGN BY: RMG	
REVIEWED BY: JDK	REVISIONS	