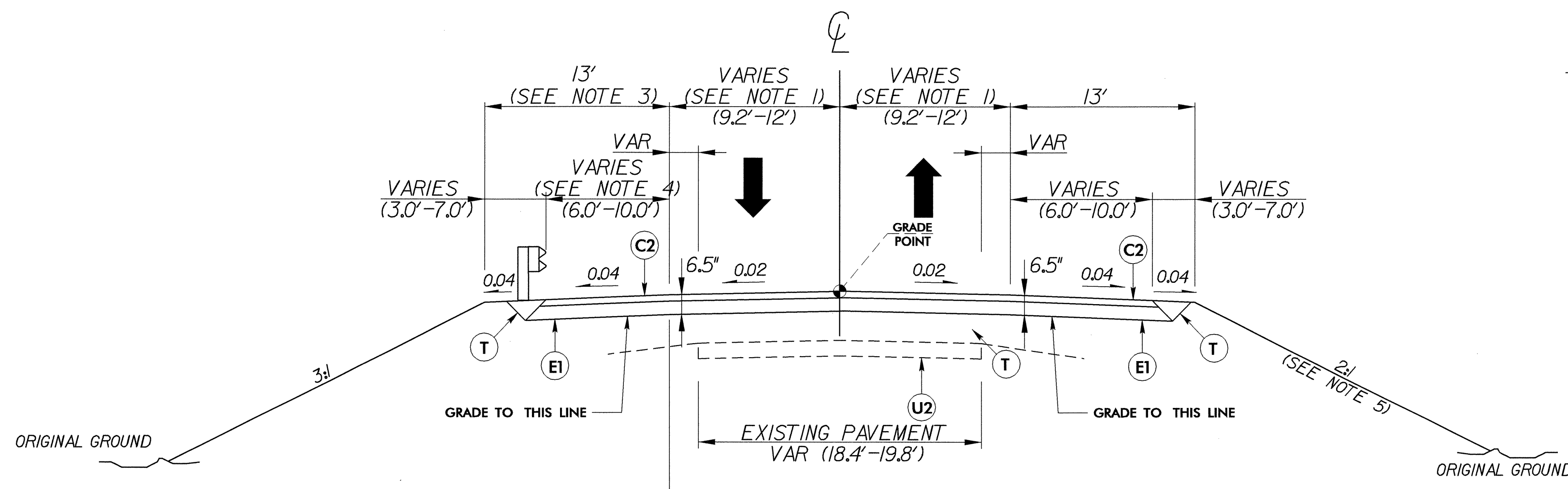


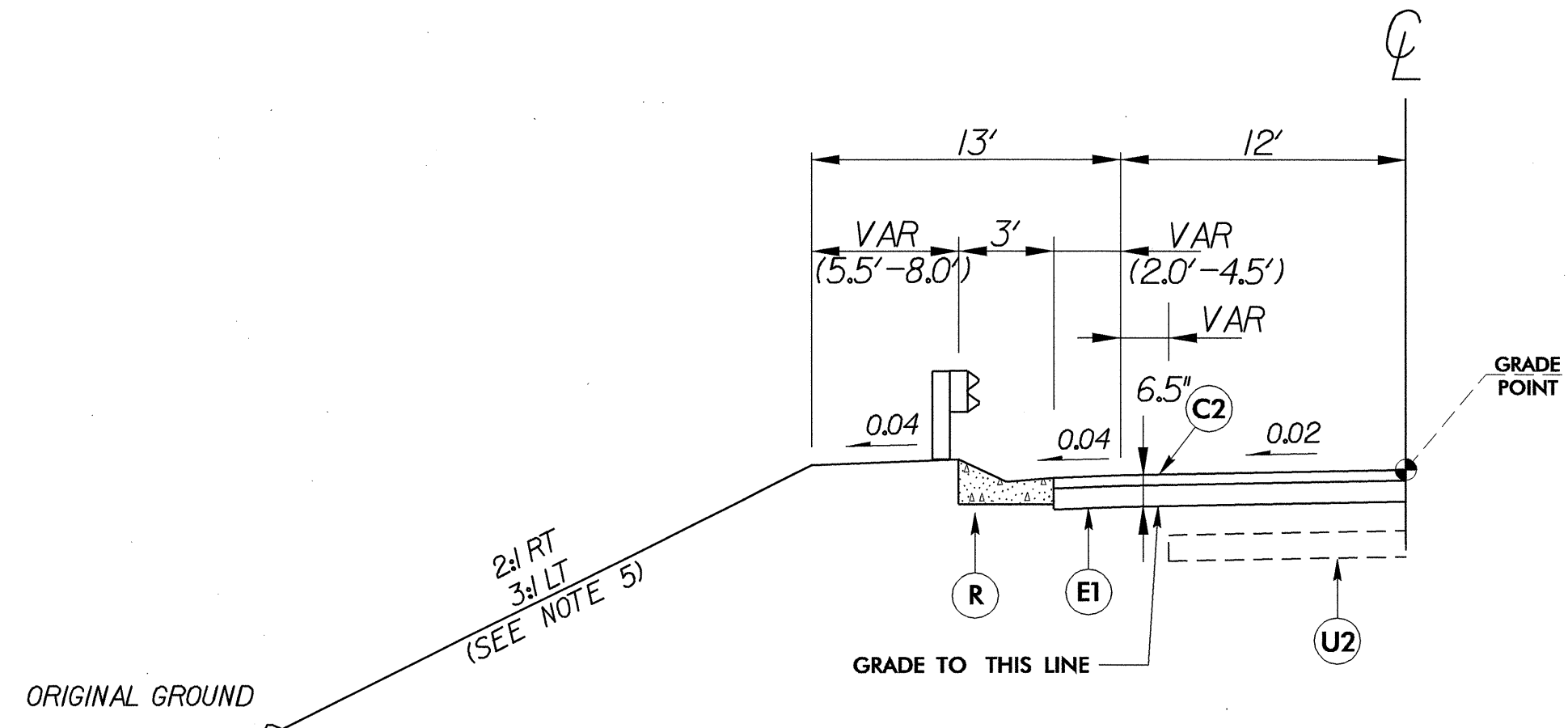
PROJECT REFERENCE NO. B-3445	SHEET NO. 2A
RAW SHEET NO.	
ROADWAY DESIGN ENGINEER NORTH CAROLINA PROFESSIONAL ENGINEER SEAL 125372 STAVELI BOENNER 02/16/2006	PAVEMENT DESIGN ENGINEER NORTH CAROLINA PROFESSIONAL ENGINEER SEAL 12868 JON-CHI CHEN 02/20/06
<b>Carter-Burgess</b>	
Consultants in Planning, Engineering, Architecture, Construction Management and Related Services 581 Glenwood Avenue, Suite 300 Raleigh, North Carolina 27612	



- NOTES:**
1. TRAVEL LANES ARE 12 FT FROM STA 21+05.00 TO STA 27+35.00
  2. GUARDRAIL TO BE PLACED AS SHOWN IN PLAN VIEW
  3. NO ADDITIONAL WIDENING REQUIRED FOR GUARDRAIL
  4. PAVE TO FACE OF GUARDRAIL
  5. ROCK EMBANKMENT TO BE PLACED AS SHOWN IN PLAN VIEW (SEE ROCK EMBANKMENT DETAIL SHEET 2B).
  6. PAVEMENT EDGE SLOPES ARE 1:1 UNLESS SHOWN OTHERWISE
  7. "ROLL-OVER" ALGEBRAIC DIFFERENCE IN RATES OF CROSS SLOPE NOT TO EXCEED 0.06. IF SUPERELEVATION IS REVOLVED ABOUT CENTERLINE OF PAVEMENT, SAME APPLIES.

USE TYPICAL SECTION NO. 2:  
 -L- STA 21+04.00 TO -L- STA 23+28.00 (BEGIN BRIDGE)  
 -L- STA 25+08.00 (END BRIDGE) TO -L- STA 26+99.50

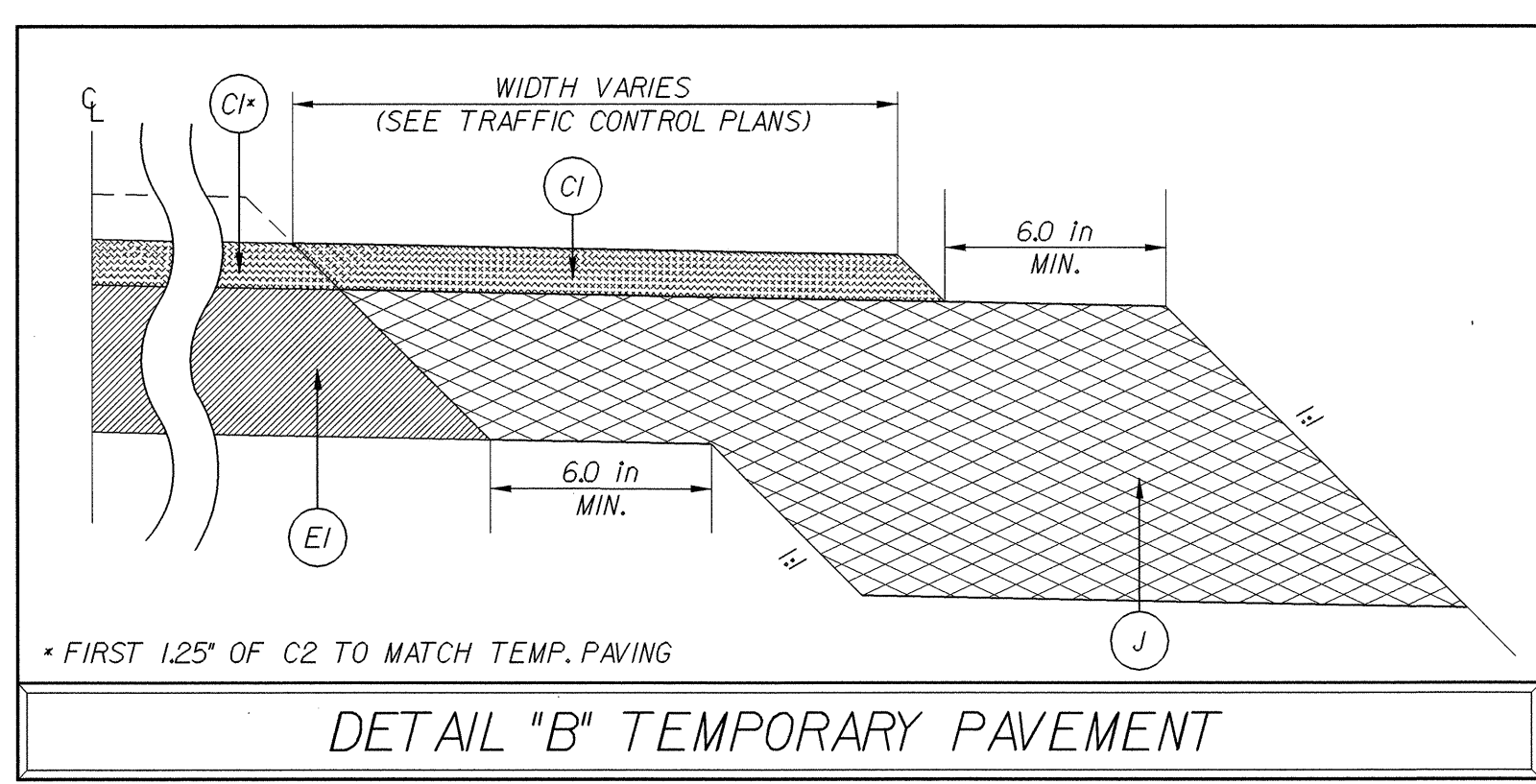
**TYPICAL SECTION NO. 2**



USE TYPICAL SECTION NO. 2A IN CONJUNCTION WITH TYPICAL SECTION NO. 2 AS FOLLOWS:  
 -L- STA 22+00.00 LT TO -L- STA 22+97.00 LT  
 -L- STA 22+00.00 RT TO -L- STA 22+97.00 RT  
 -L- STA 25+39.00 LT TO -L- STA 25+46.00 LT  
 -L- STA 25+39.00 RT TO -L- STA 25+46.00 RT

USE TYPICAL SECTION NO. 1A IN CONJUNCTION WITH TYPICAL SECTION NO. 2 AS FOLLOWS:  
 -L- STA 21+04.00 TO -L- STA 21+10.00 RT

**TYPICAL SECTION NO. 2B**



PAVEMENT SCHEDULE			
C1	1 1/4" SF9.5A	R	SHOULDER BERM GUTTER
C2	2 1/2" SF9.5A	T	EARTH MATERIAL
C3	VAR. DEPTH SF9.5A	U1	EXISTING PAVEMENT
E1	4" B25.0B	U2	EXISTING PAVEMENT (SCARIFIED)
E2	VAR. DEPTH B25.0B	W	WEDGING - SEE DETAIL ON SHEET 2
J	8" ABC		

BRIDGE TYPICAL SECTION  
 -L- STA 23+28.00 TO -L- STA 25+08.00

