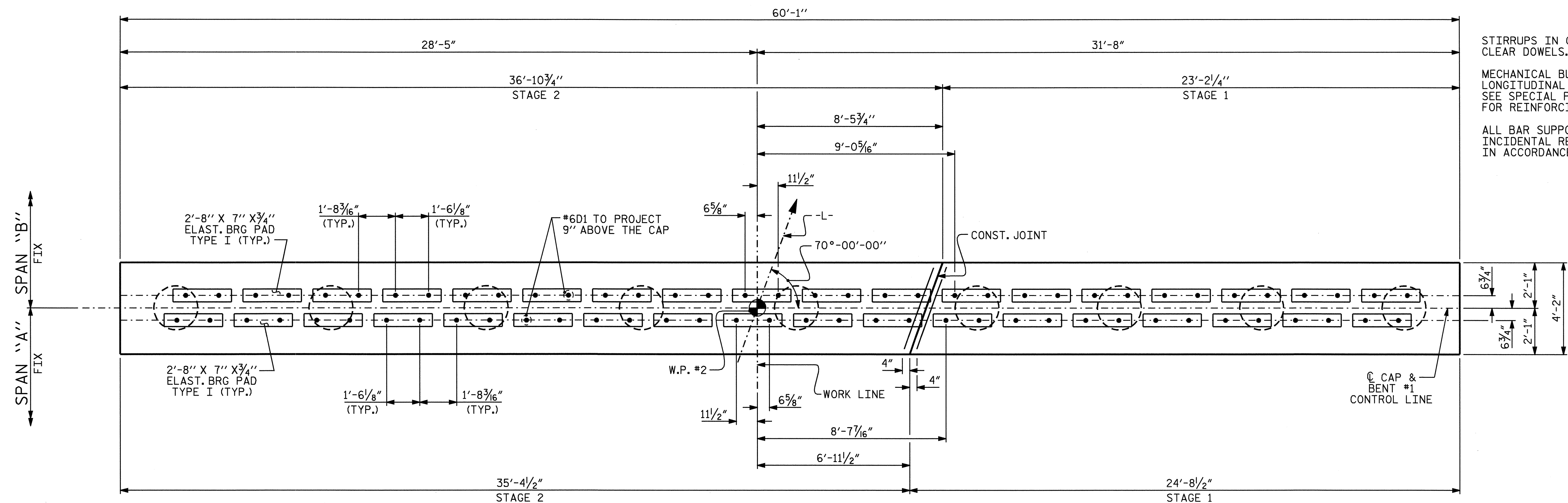


**NOTES**

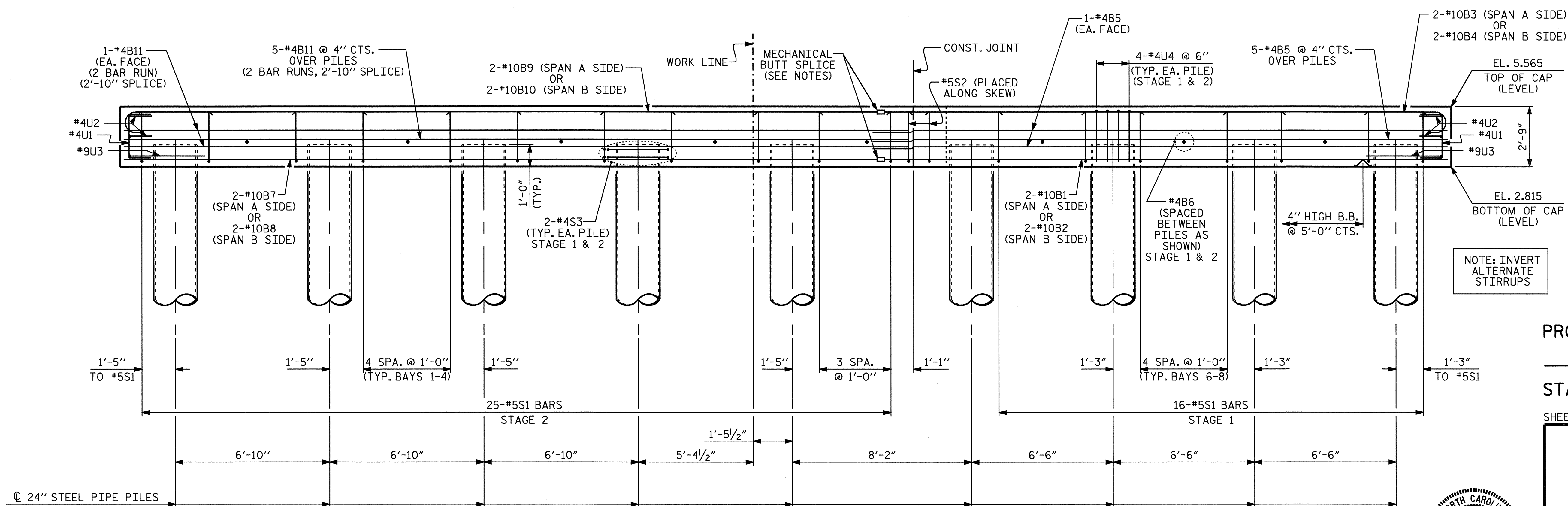
STIRRUPS IN CAP MAY BE SHIFTED AS NECESSARY TO CLEAR DOWELS.

MECHANICAL BUTT SPLICE SHALL BE USED TO JOIN THE LONGITUDINAL "B" BARS IN THE TOP AND BOTTOM OF CAP. SEE SPECIAL PROVISIONS FOR MECHANICAL BUTT SPLICING FOR REINFORCING STEEL.

ALL BAR SUPPORTS USED IN THE BENT CAPS AND ALL INCIDENTAL REINFORCING STEEL SHALL BE EPOXY COATED IN ACCORDANCE WITH THE STANDARD SPECIFICATIONS.



**PLAN**



**ELEVATION**

\*10B1, \*10B2, \*10B3 AND \*10B4 BARS EXTEND A MINIMUM OF 1'-6" INTO STAGE 2.

\*4B5 BARS EXTEND A MINIMUM OF 1'-8" INTO STAGE 2 FOR A 1'-6" SPLICE WITH \*4B11 BARS.

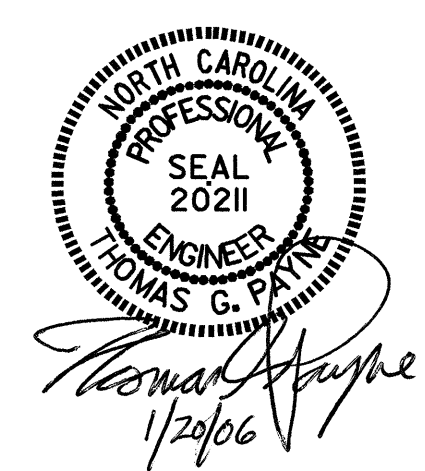
PROJECT NO. B-3445  
CURRITUCK COUNTY  
 STATION: 24+18.00 -L-

SHEET 1 OF 2

STATE OF NORTH CAROLINA  
 DEPARTMENT OF TRANSPORTATION  
 RALEIGH

SUBSTRUCTURE  
 BENT #1

REVISIONS						SHEET NO.	
NO.	BY:	DATE:	NO.	BY:	DATE:	S-33	
1			3			TOTAL SHEETS 44	
2			4				



DRAWN BY: J.P. ADAMS DATE: 11/9/05  
 CHECKED BY: A. CHAN DATE: 11/05