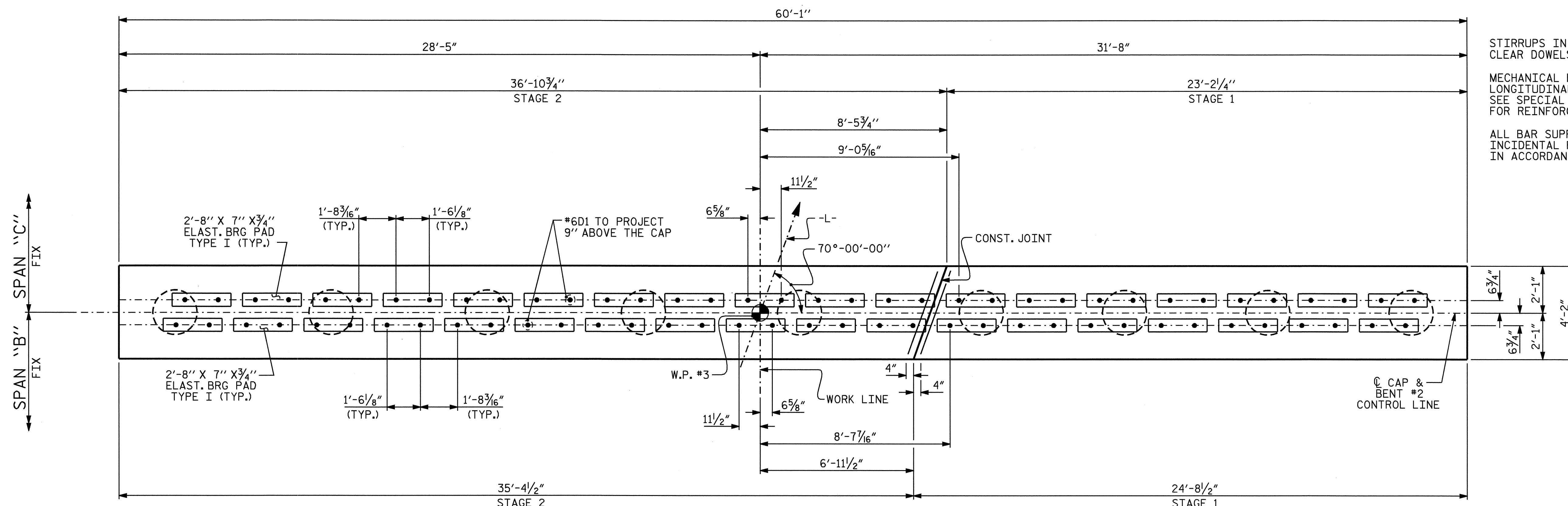


NOTES

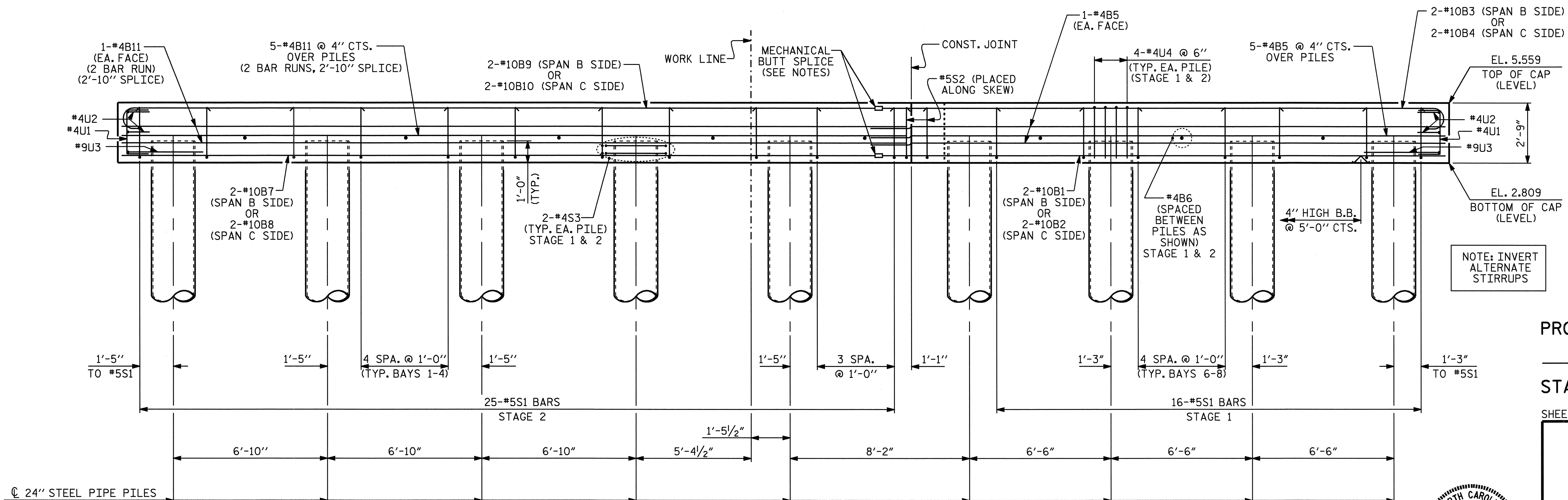
STIRRUPS IN CAP MAY BE SHIFTED AS NECESSARY TO CLEAR DOWELS.

MECHANICAL BUTT SPLICE SHALL BE USED TO JOIN THE LONGITUDINAL "B" BARS IN THE TOP AND BOTTOM OF CAP. SEE SPECIAL PROVISIONS FOR MECHANICAL BUTT SPLICING FOR REINFORCING STEEL.

ALL BAR SUPPORTS USED IN THE BENT CAPS AND ALL INCIDENTAL REINFORCING STEEL SHALL BE EPOXY COATED IN ACCORDANCE WITH THE STANDARD SPECIFICATIONS.



PLAN



ELEVATION

PROJECT NO. B-3445
CURRITUCK COUNTY
 STATION: 24+18.00 -L-

SHEET 1 OF 2

STATE OF NORTH CAROLINA
 DEPARTMENT OF TRANSPORTATION
 RALEIGH

SUBSTRUCTURE
 BENT #2

REVISIONS					
NO.	BY:	DATE:	NO.	BY:	DATE:
1			3		
2			4		

SHEET NO. **S-35**
 TOTAL SHEETS **44**



#10B1, #10B2, #10B3 AND #10B4 BARS EXTEND A MINIMUM OF 1'-6" INTO STAGE 2.

#4B5 BARS EXTEND A MINIMUM OF 1'-8" INTO STAGE 2 FOR A 1'-6" SPLICE WITH #4B11 BARS.

DRAWN BY : J.P. ADAMS DATE : 11/9/05
 CHECKED BY : A. CHAN DATE : 11/05