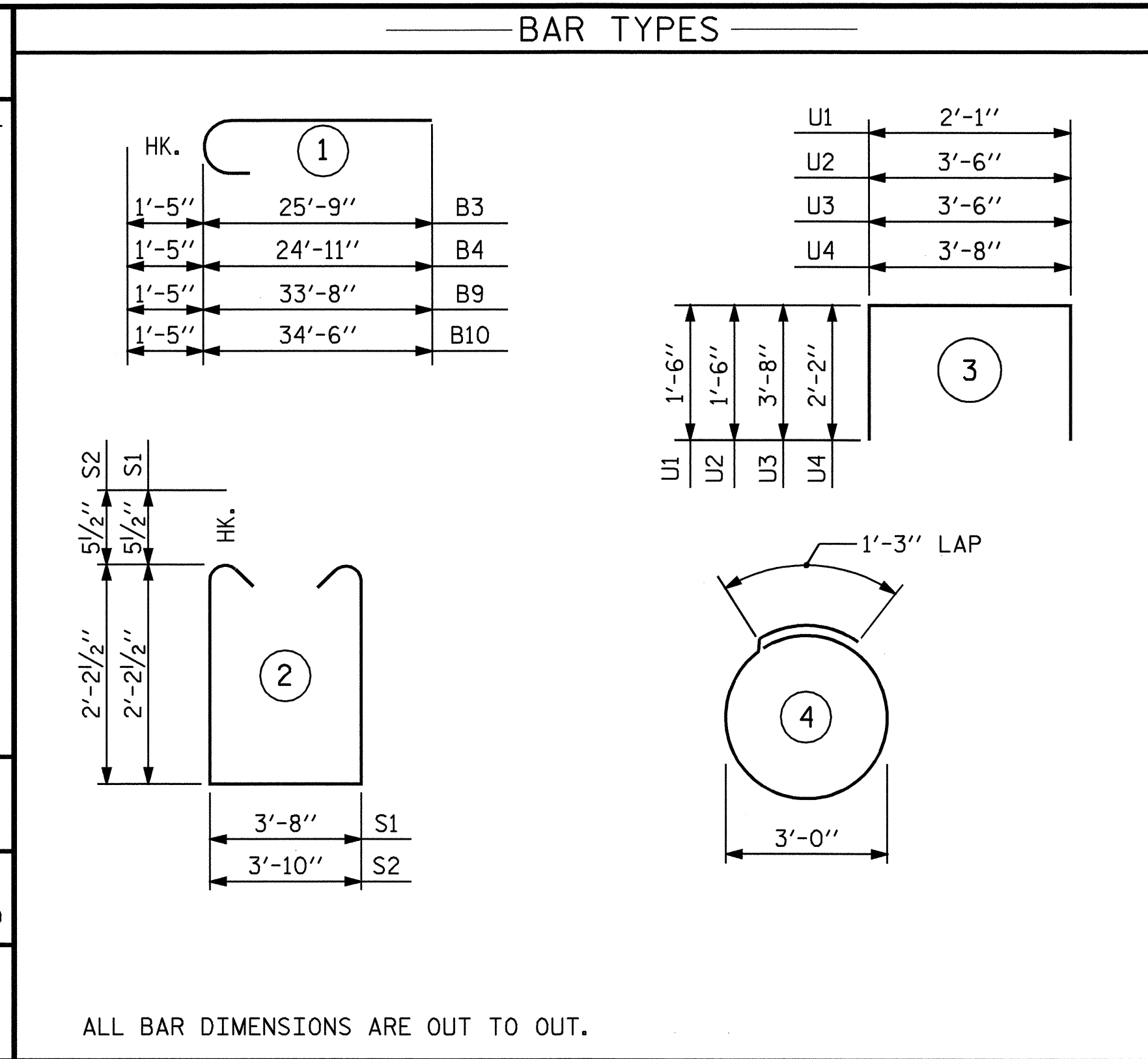
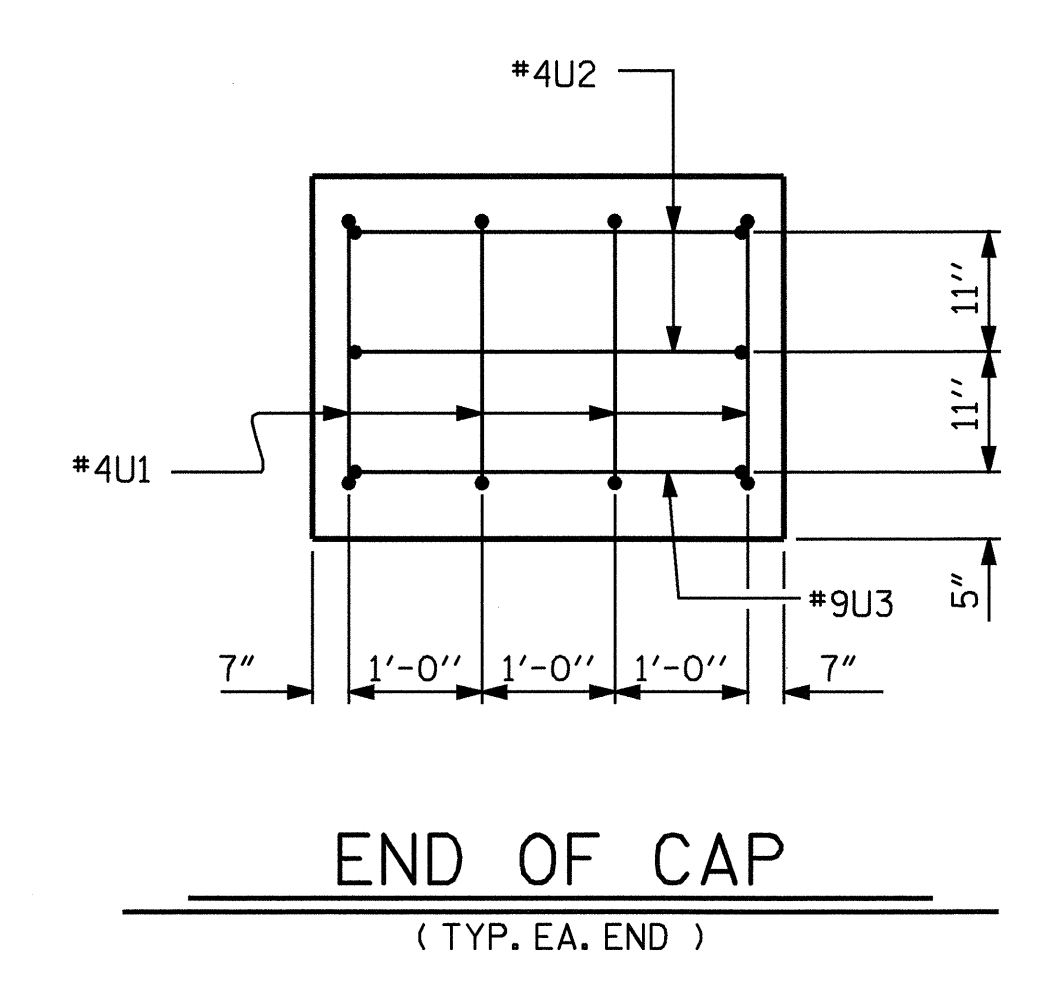
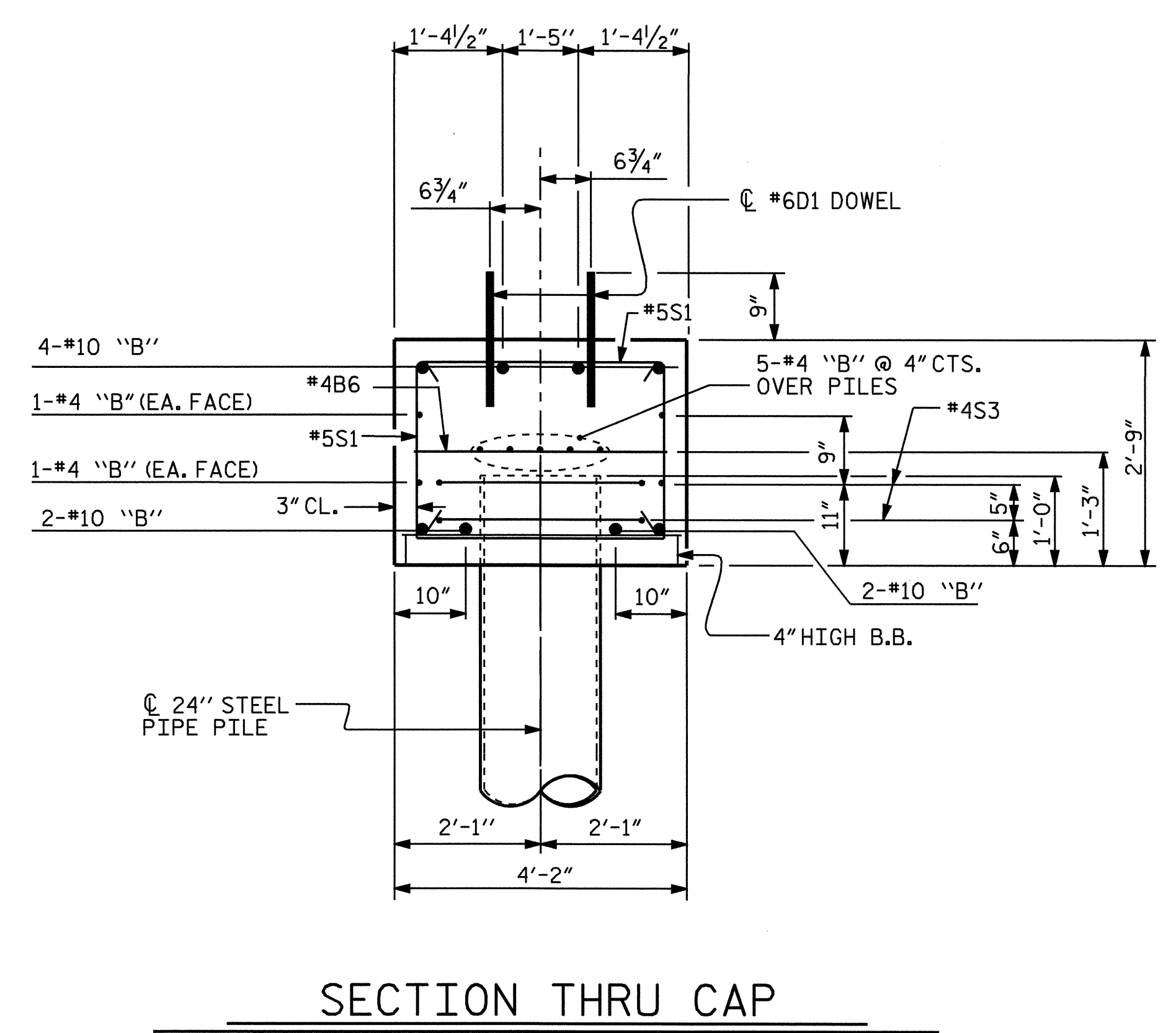


BILL OF MATERIAL BENT #3 STAGE 1					
BAR NO.	NO.	SIZE	TYPE	LENGTH	WEIGHT
*B1	2	#10	STR	25'-10"	222
*B2	2	#10	STR	24'-9"	213
*B3	2	#10	1	27'-2"	234
*B4	2	#10	1	26'-4"	227
*B5	9	#4	STR	26'-1"	157
*B6	3	#4	STR	3'-8"	7
*D1	28	#6	STR	1'-6"	63
*S1	16	#5	2	9'-0"	150
*S2	1	#5	2	9'-2"	10
*S3	8	#4	4	10'-9"	57
*U1	4	#4	3	5'-1"	14
*U2	2	#4	3	6'-6"	9
*U3	1	#9	3	10'-10"	37
*U4	16	#4	3	8'-0"	86
*EPOXY COATED REINF. STEEL =1486 LBS					
CLASS AA CONCRETE BREAKDOWN					
CLASS AA CONCRETE TOTAL CU. YDS 9.7					
PP 24 X 0.625 STEEL PILES					
No. = 4 LIN. FT. = 380					
PIPE PILE PLATES No. = 4 EA.					



BILL OF MATERIAL BENT #3 STAGE 2					
BAR NO.	NO.	SIZE	TYPE	LENGTH	WEIGHT
*B6	5	#4	STR	3'-8"	12
*B7	2	#10	STR	33'-9"	290
*B8	2	#10	STR	34'-10"	300
*B9	2	#10	1	35'-1"	302
*B10	2	#10	1	35'-11"	309
*B11	18	#4	STR	19'-0"	228
*D1	44	#6	STR	1'-6"	99
*S1	25	#5	2	9'-0"	235
*S2	1	#5	2	9'-2"	10
*S3	10	#4	4	10'-9"	72
*U1	4	#4	3	5'-1"	14
*U2	2	#4	3	6'-6"	9
*U3	1	#9	3	10'-10"	37
*U4	20	#4	3	8'-0"	107
*EPOXY COATED REINF. STEEL =2024 LBS					
CLASS AA CONCRETE BREAKDOWN					
CLASS AA CONCRETE TOTAL CU. YDS 14.8					
PP 24 X 0.625 STEEL PILES					
No. = 5 LIN. FT. = 475					
PIPE PILE PLATES No. = 5 EA.					

TOTAL BILL OF MATERIAL FOR BENT #3 STAGES 1 & 2		
CLASS AA CONCRETE TOTAL		24.5 CY.
EPOXY COATED REINFORCING STEEL		3510 LBS
PP 24 X 0.625 STEEL PILES	No. = 9	855 LIN. FT.
PIPE PILE PLATES	No. = 9	EA.



PROJECT NO. B-3445  
CURRITUCK COUNTY  
STATION: 24+18.00 -L-

SHEET 2 OF 2

STATE OF NORTH CAROLINA  
DEPARTMENT OF TRANSPORTATION  
RALEIGH

SUBSTRUCTURE  
BENT #3

REVISIONS						SHEET NO.
NO.	BY:	DATE:	NO.	BY:	DATE:	S-38
1			3			TOTAL SHEETS
2			4			44



DRAWN BY : J.P. ADAMS DATE : 11/9/05  
CHECKED BY : A. CHAN DATE : 11/05

10-JAN-2006 08:04  
R:\Structures\B3445\Final\plans\B-3445.ed.B\*.dgn  
tpayne