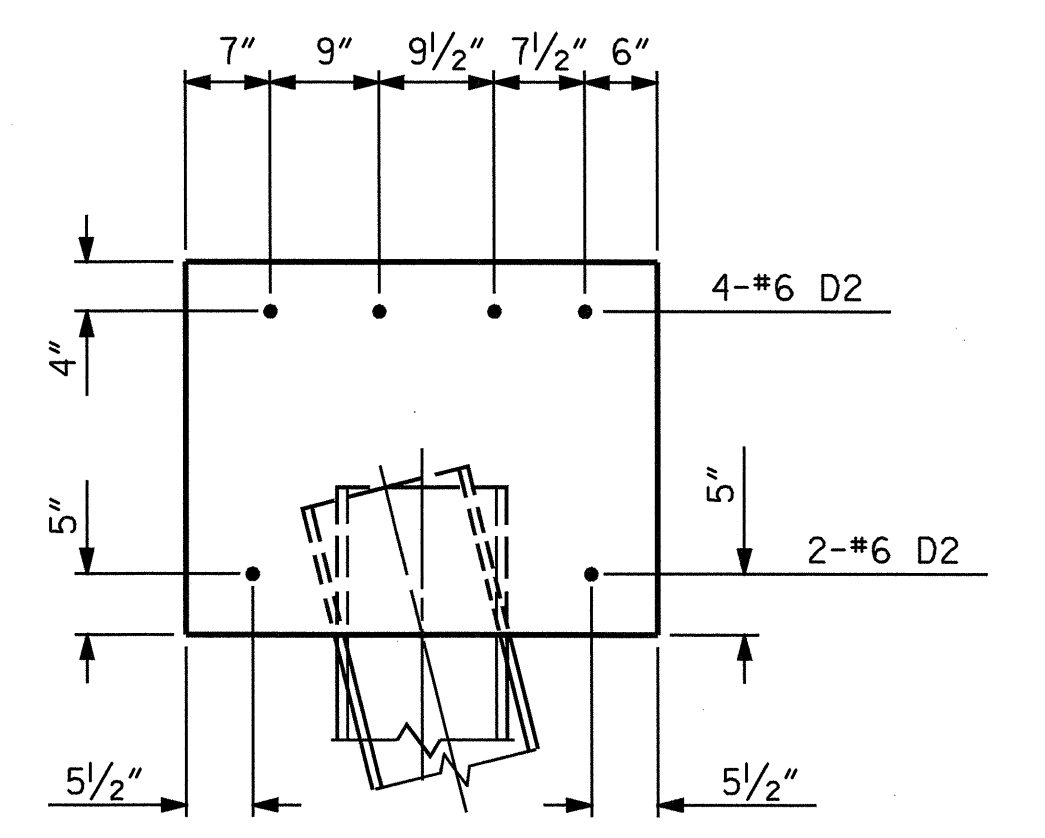
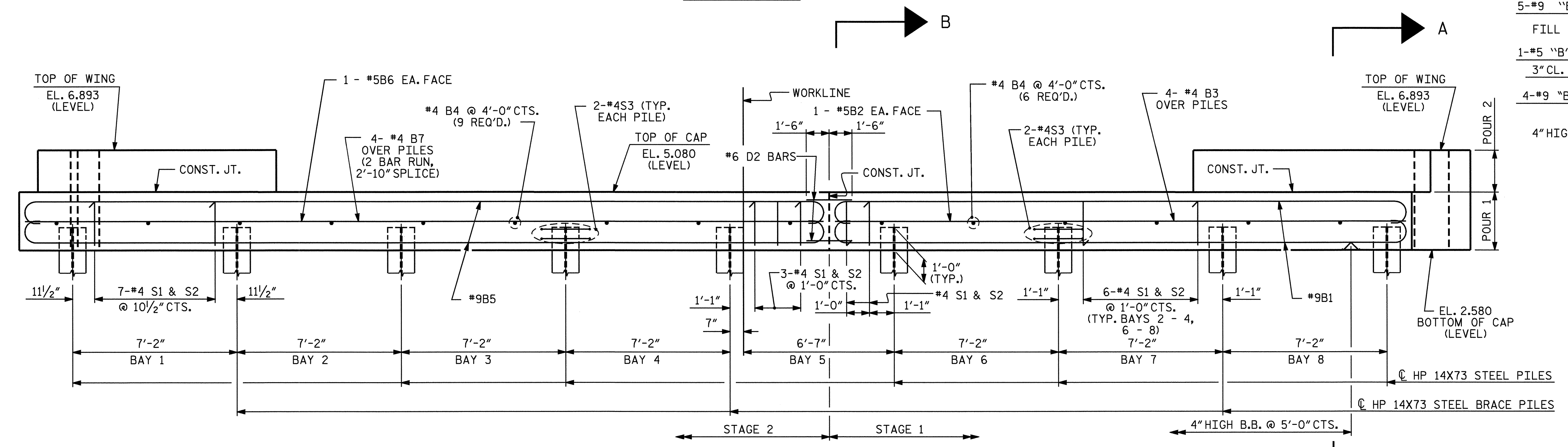


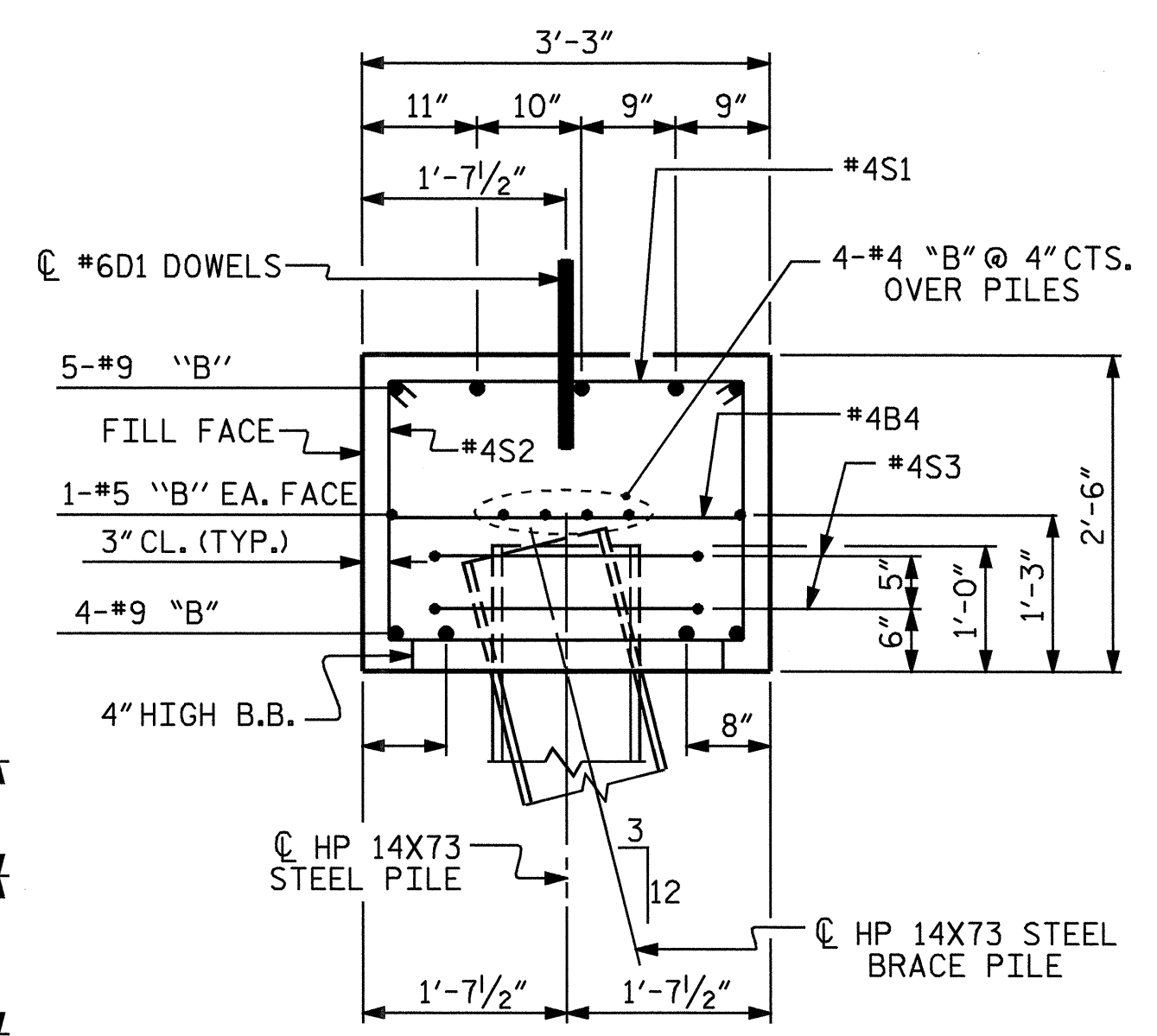
PLAN



SECTION B-B
(PLACEMENT OF DOWELS)



ELEVATION



SECTION A-A

NOTES

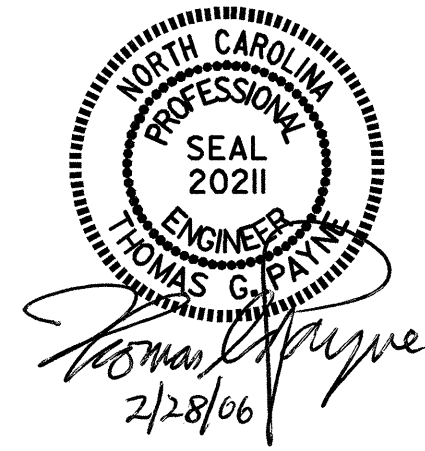
- STIRRUPS IN CAP MAY BE SHIFTED AS NECESSARY TO CLEAR DOWELS.
- THE CONTRACTOR SHALL PROVIDE FOR INSTALLATION OF THE 4" DIAMETER DRAIN PIPE THROUGH THE WING WALL AS REQUIRED FOR REINFORCED BRIDGE APPROACH FILLS, SEE THE ROADWAY PLANS. REINFORCING STEEL IN THE WING WALL MAY BE SHIFTED AS NECESSARY TO CLEAR THE DRAIN PIPE.
- THE DOWELS AT THE CONSTRUCTION JOINT SHALL BE DRILLED AND GROUTED BEFORE STAGE 2 IS BUILT. DOWELS SHALL BE PARALLEL TO CAP.
- ALL BAR SUPPORTS USED IN THE END BENT CAPS AND ALL INCIDENTAL REINFORCING STEEL SHALL BE EPOXY COATED IN ACCORDANCE WITH THE STANDARD SPECIFICATIONS.
- HP 14X73 STEEL PILES SHALL CONTAIN 0.2% COPPER.

PROJECT NO. B-3445
CURRITUCK COUNTY
 STATION: 24+18.00 -L-

SHEET 1 OF 2

STATE OF NORTH CAROLINA
 DEPARTMENT OF TRANSPORTATION
 RALEIGH

SUBSTRUCTURE
 END BENT 2
 (STAGE 1 & 2)



REVISIONS						SHEET NO.	
NO.	BY:	DATE:	NO.	BY:	DATE:	S-39	
1			3			TOTAL SHEETS	44
2			4				

DRAWN BY: H.A. LOCKLEAR DATE: 3/1/02
 CHECKED BY: D.B. MOORE DATE: 3/27/02