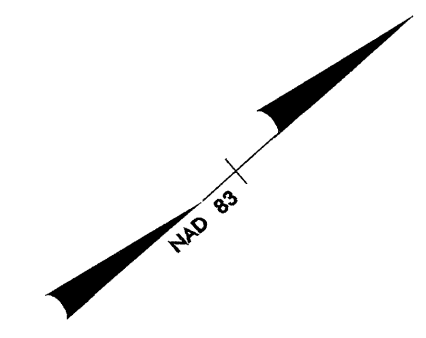


PROJECT REFERENCE NO.	SHEET NO.
B-4027	UC-2
DESIGNED BY: KAK	
DRAWN BY: KAK	
CHECKED BY: CDB	
APPROVED BY: CDB	
REVISER:	
NORTH CAROLINA DEPARTMENT OF TRANSPORTATION	
PROJECT SERVICES UNIT PHONE: (919) 250-4128 FAX: (919) 250-4119	
UTILITY CONSTRUCTION PLANS ONLY	

**NOTE: THE EXISTING WATER LINE IS OWNED BY BERTIE COUNTY**



**UTILITY CONSTRUCTION**

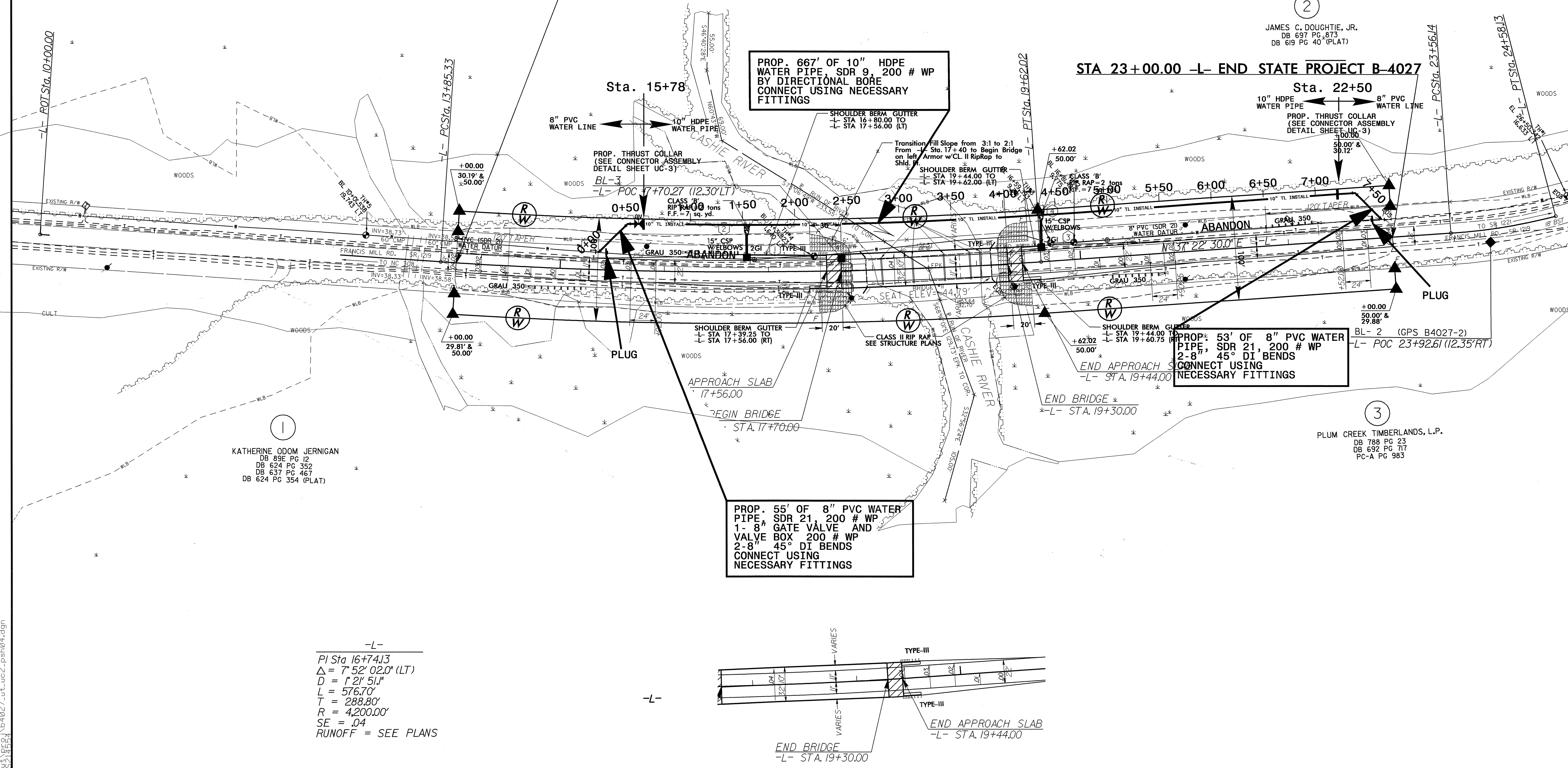
10  
KATHERINE ODOM JERNIGAN  
DB 89E PG 12  
DB 624 PG 352  
DB 637 PG 467  
DB 624 PG 354 (PLAT)

2  
JAMES C. DOUGHTIE, JR.  
DB 697 PG 873  
DB 619 PG 40 (PLAT)

3  
PLUM CREEK TIMBERLANDS, L.P.  
DB 788 PG 23  
DB 692 PG 717  
PC-A PG 983

STA 14+00.00 -L- BEGIN STATE PROJECT B-4027

STA 23+00.00 -L- END STATE PROJECT B-4027

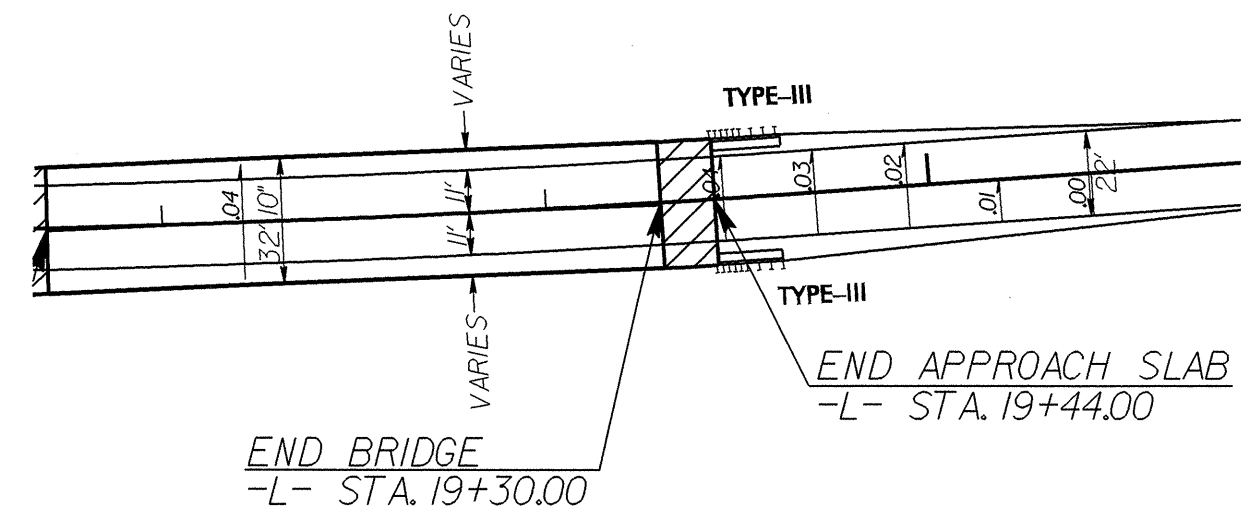


PROP. 667' OF 10" HDPE WATER PIPE, SDR 9, 200 # WP BY DIRECTIONAL BORE CONNECT USING NECESSARY FITTINGS

PROP. 53' OF 8" PVC WATER PIPE, SDR 21, 200 # WP 2-8" 45° DI BENDS CONNECT USING NECESSARY FITTINGS

PROP. 55' OF 8" PVC WATER PIPE, SDR 21, 200 # WP 1- 8" GATE VALVE AND VALVE BOX 200 # WP 2- 8" 45° DI BENDS CONNECT USING NECESSARY FITTINGS

-L-  
PI Sta 16+74.13  
 $\Delta = 7' 52" 02.0" (LT)$   
 $D = 1' 21" 51.1"$   
 $L = 576.70'$   
 $T = 288.80'$   
 $R = 4,200.00'$   
 $SE = .04$   
RUNOFF = SEE PLANS



5/14/99  
13-DEC-2005 09:08  
r:\utilities\psh04\dwg\psh04.dgn