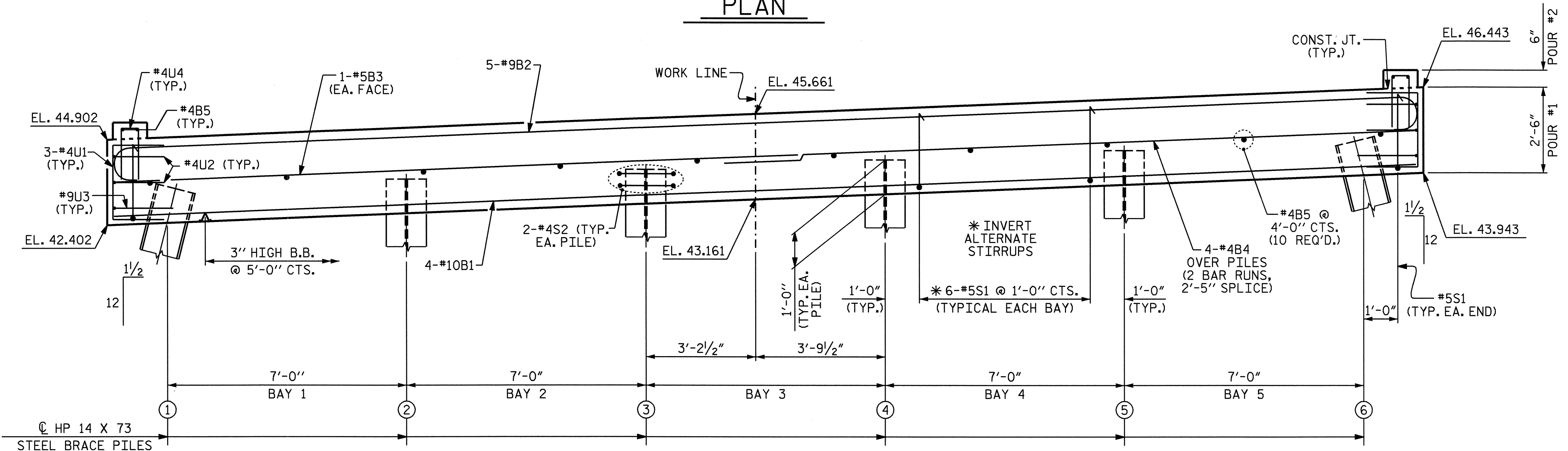


PLAN

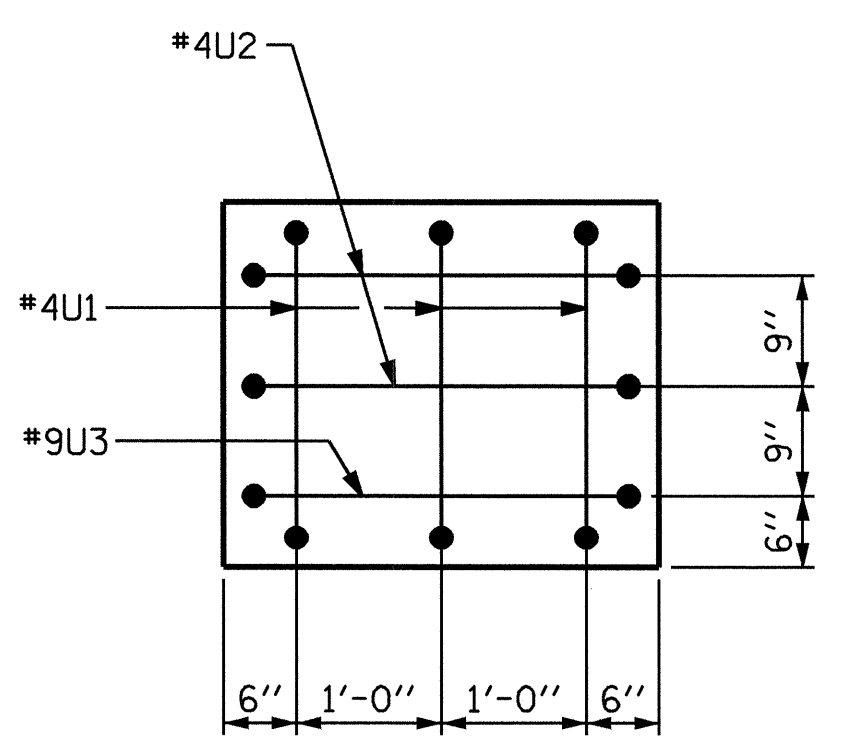


ELEVATION

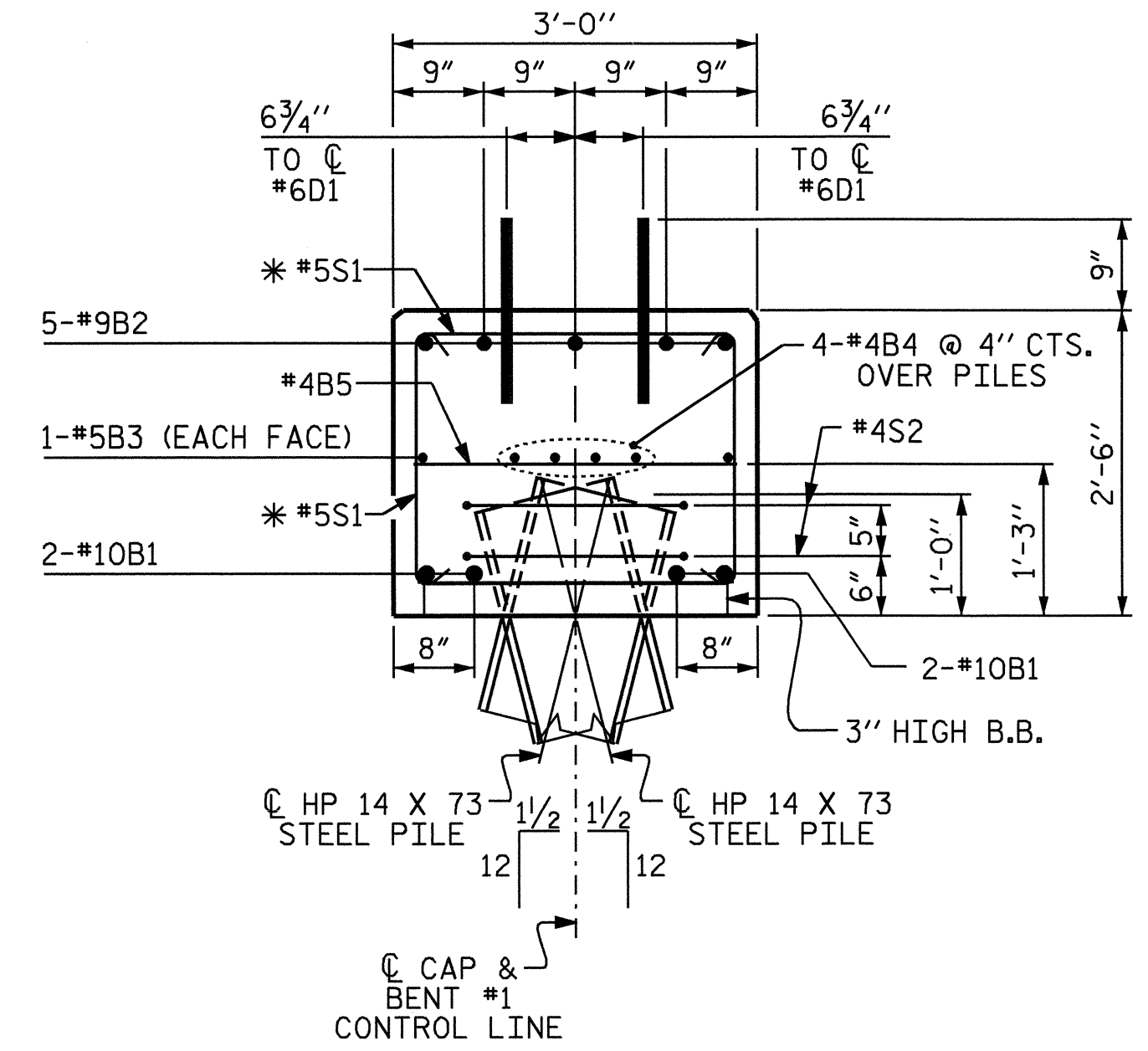
NOTES

STIRRUPS IN CAP MAY BE SHIFTED AS NECESSARY TO CLEAR DOWELS.
 FOR PILE SPLICE DETAILS, SEE END BENT #1, SHEET 3 OF 3.
 THE LATERAL GUIDE AT EACH END OF CAP IS NOT TO BE POURED UNTIL AFTER THE CORED SLAB UNITS ARE IN PLACE.
 FOR CONSTRUCTION OF SUBSTRUCTURE, SEE SPECIAL PROVISIONS.

TOP OF PILE ELEVATIONS	
1	43.472
2	43.752
3	44.032
4	44.313
5	44.593
6	44.873



END VIEW



SECTION THRU CAP

BILL OF MATERIAL

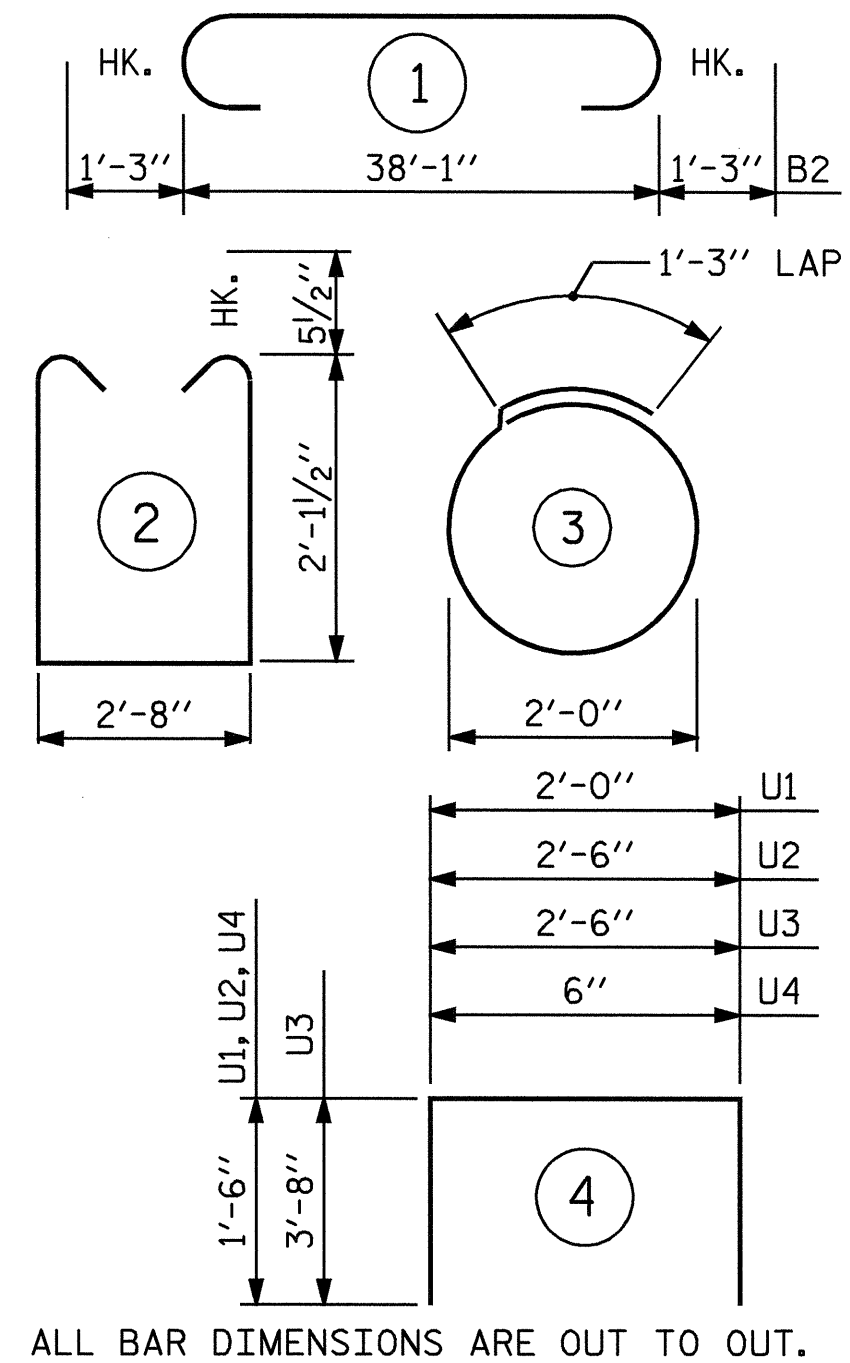
BENT #1					
BAR	NO.	SIZE	TYPE	LENGTH	WEIGHT
B1	4	10	STR	38'-2"	657
B2	5	9	1	40'-7"	690
B3	2	5	STR	38'-2"	80
B4	8	4	STR	20'-5"	109
B5	14	4	STR	2'-8"	25
D1	48	6	STR	1'-6"	108
S1	32	5	2	7'-10"	261
S2	12	4	3	7'-7"	61
U1	6	4	4	5'-0"	20
U2	4	4	4	5'-6"	15
U3	2	9	4	9'-10"	67
U4	8	4	4	3'-6"	19

TOTAL REINFORCING STEEL = 2112 LBS.

CLASS A CONCRETE BREAKDOWN
 POUR #1 (CAP) 10.7 C.Y.
 POUR #2 (LATERAL GUIDE) 0.1 C.Y.
 TOTAL CLASS A CONCRETE 10.8 C.Y.

HP 14 X 73 STEEL PILES
 NO. 6 450 LIN. FT.

GALVANIZING STEEL PILES LUMP SUM



PROJECT NO. B-4027
 BERTIE COUNTY
 STATION: 18+50.00 -L-

STATE OF NORTH CAROLINA
 DEPARTMENT OF TRANSPORTATION
 RALEIGH

SUBSTRUCTURE
 BENT #1

REVISIONS						SHEET NO.
NO.	BY:	DATE:	NO.	BY:	DATE:	S-13
1			3			TOTALS
2			4			23

DRAWN BY: J.P. ADAMS DATE: 7/12/05
 CHECKED BY: S.H. SOCKWELL DATE: 7/21/05

