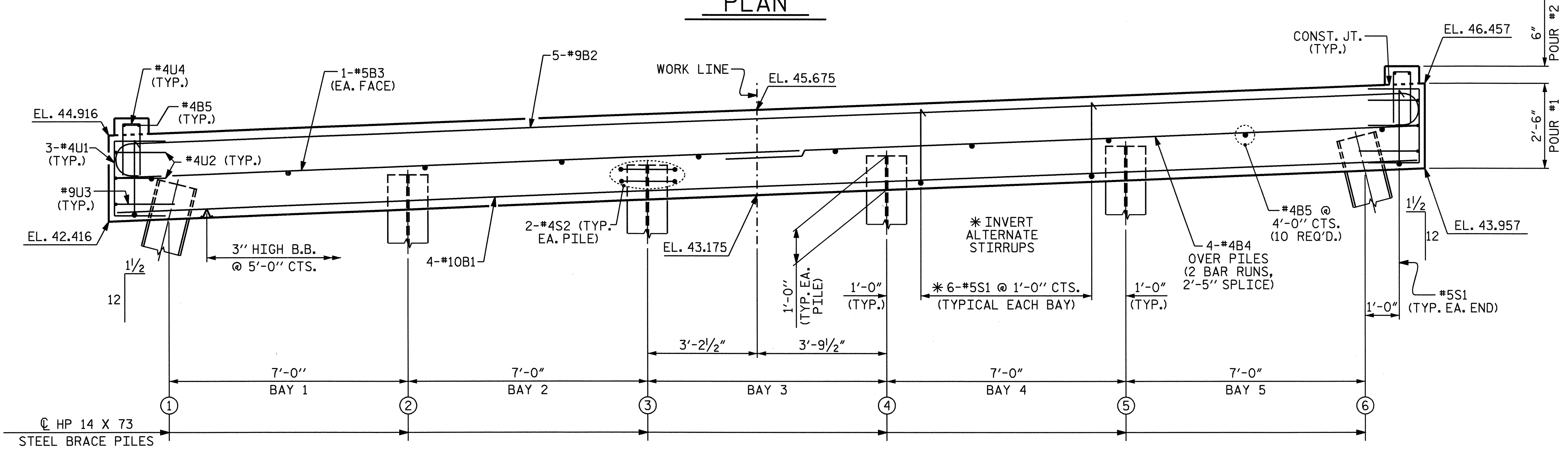


PLAN

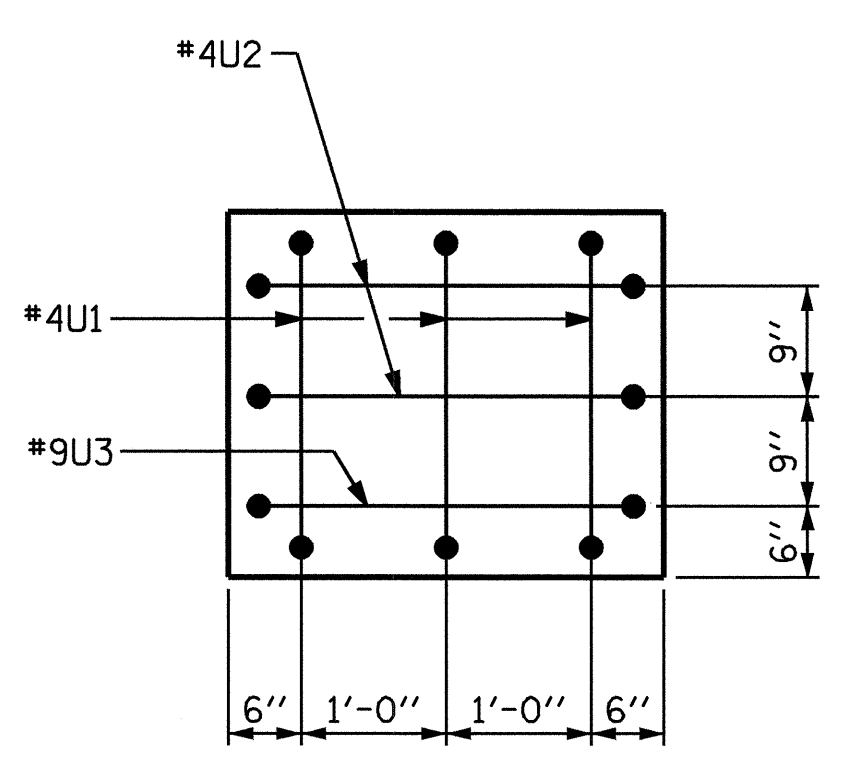


ELEVATION

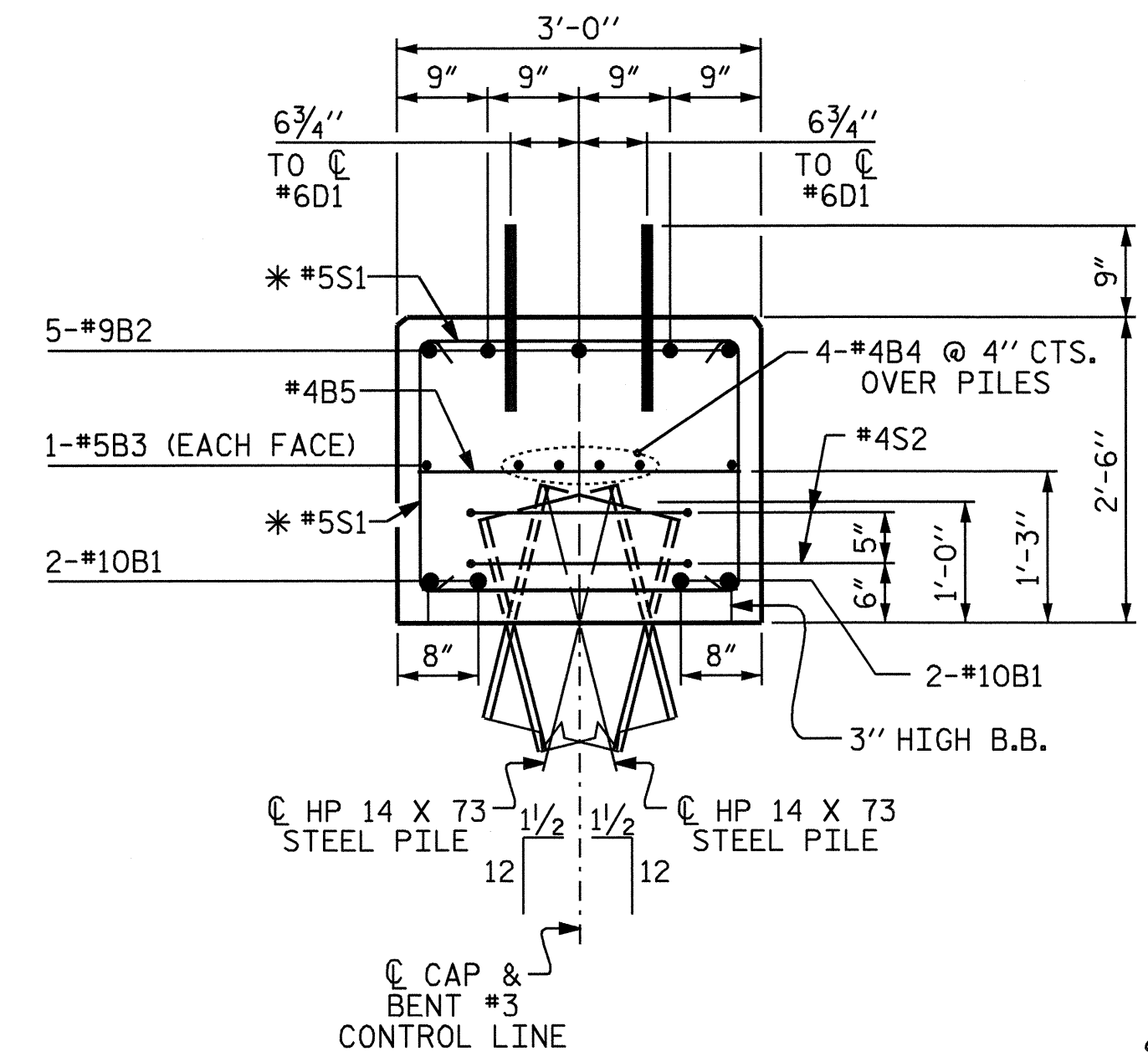
NOTES

STIRRUPS IN CAP MAY BE SHIFTED AS NECESSARY TO CLEAR DOWELS.  
 FOR PILE SPLICE DETAILS, SEE END BENT #1, SHEET 3 OF 3.  
 THE LATERAL GUIDE AT EACH END OF CAP IS NOT TO BE POURED UNTIL AFTER THE CORED SLAB UNITS ARE IN PLACE.  
 FOR CONSTRUCTION OF SUBSTRUCTURE, SEE SPECIAL PROVISIONS.

TOP OF PILE ELEVATIONS	
1	43.486
2	43.766
3	44.046
4	44.326
5	44.606
6	44.886



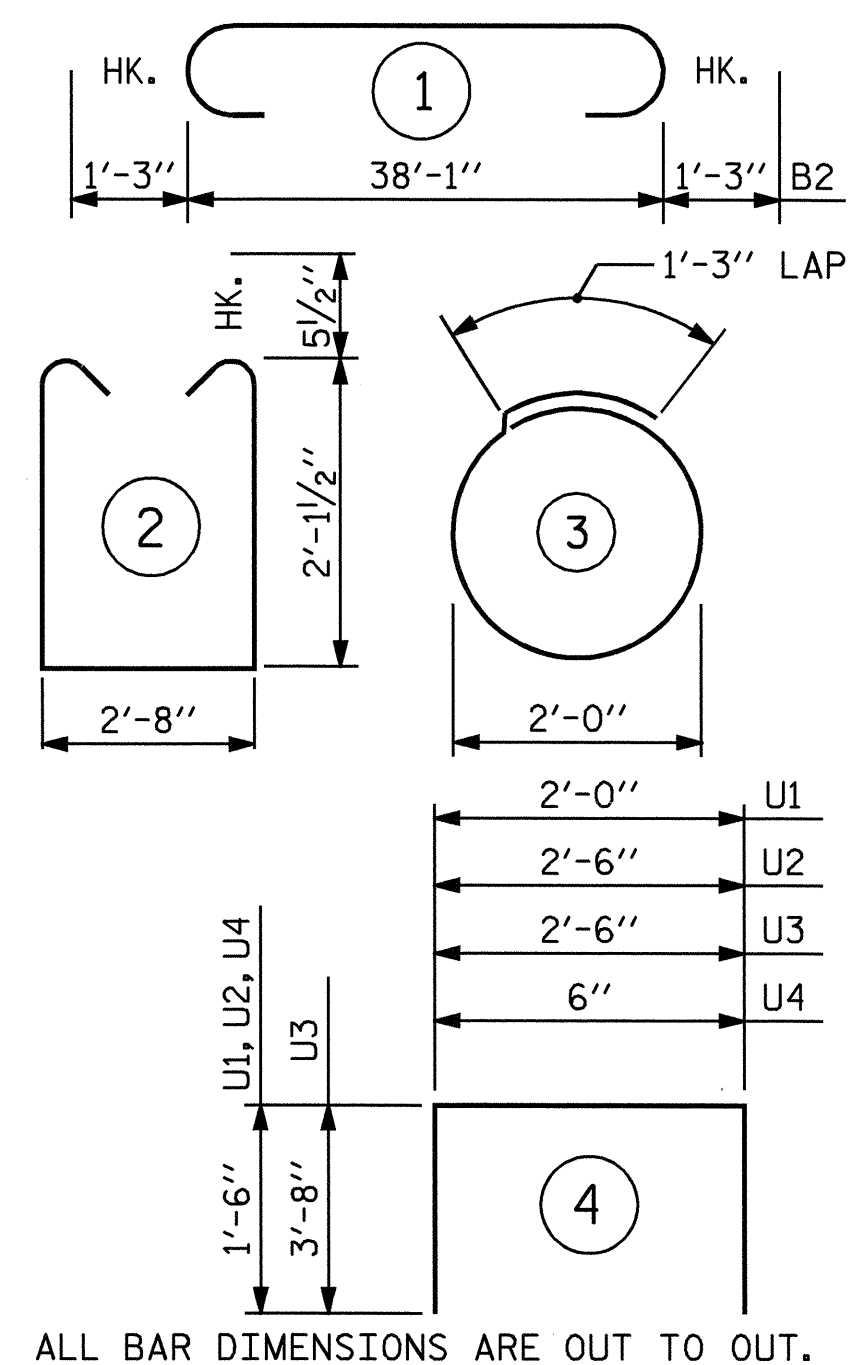
END VIEW



SECTION THRU CAP

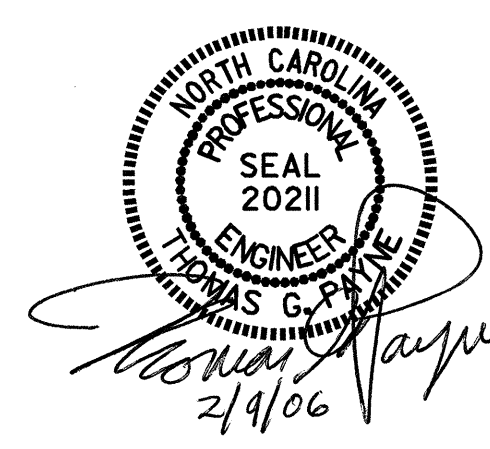
BILL OF MATERIAL					
BENT #3					
BAR	NO.	SIZE	TYPE	LENGTH	WEIGHT
B1	4	10	STR	38'-2"	657
B2	5	9	1	40'-7"	690
B3	2	5	STR	38'-2"	80
B4	8	4	STR	20'-5"	109
B5	14	4	STR	2'-8"	25
D1	48	6	STR	1'-6"	108
S1	32	5	2	7'-10"	261
S2	12	4	3	7'-7"	61
U1	6	4	4	5'-0"	20
U2	4	4	4	5'-6"	15
U3	2	9	4	9'-10"	67
U4	8	4	4	3'-6"	19
TOTAL REINFORCING STEEL = 2112 LBS.					
CLASS A CONCRETE BREAKDOWN					
POUR #1 (CAP)					10.7 C.Y.
POUR #2 (LATERAL GUIDE)					0.1 C.Y.
TOTAL CLASS A CONCRETE					10.8 C.Y.

HP 14 X 73 STEEL PILES  
 NO. 6 450 LIN. FT.  
 GALVANIZING STEEL PILES LUMP SUM



PROJECT NO. B-4027  
 BERTIE COUNTY  
 STATION: 18+50.00 -L-

STATE OF NORTH CAROLINA DEPARTMENT OF TRANSPORTATION RALEIGH					
SUBSTRUCTURE BENT #3					
REVISIONS					
NO.	BY:	DATE:	NO.	BY:	DATE:
1			3		
2			4		



DRAWN BY: J.P. ADAMS DATE: 7/12/05  
 CHECKED BY: S.H. SOCKWELL DATE: 7/21/05