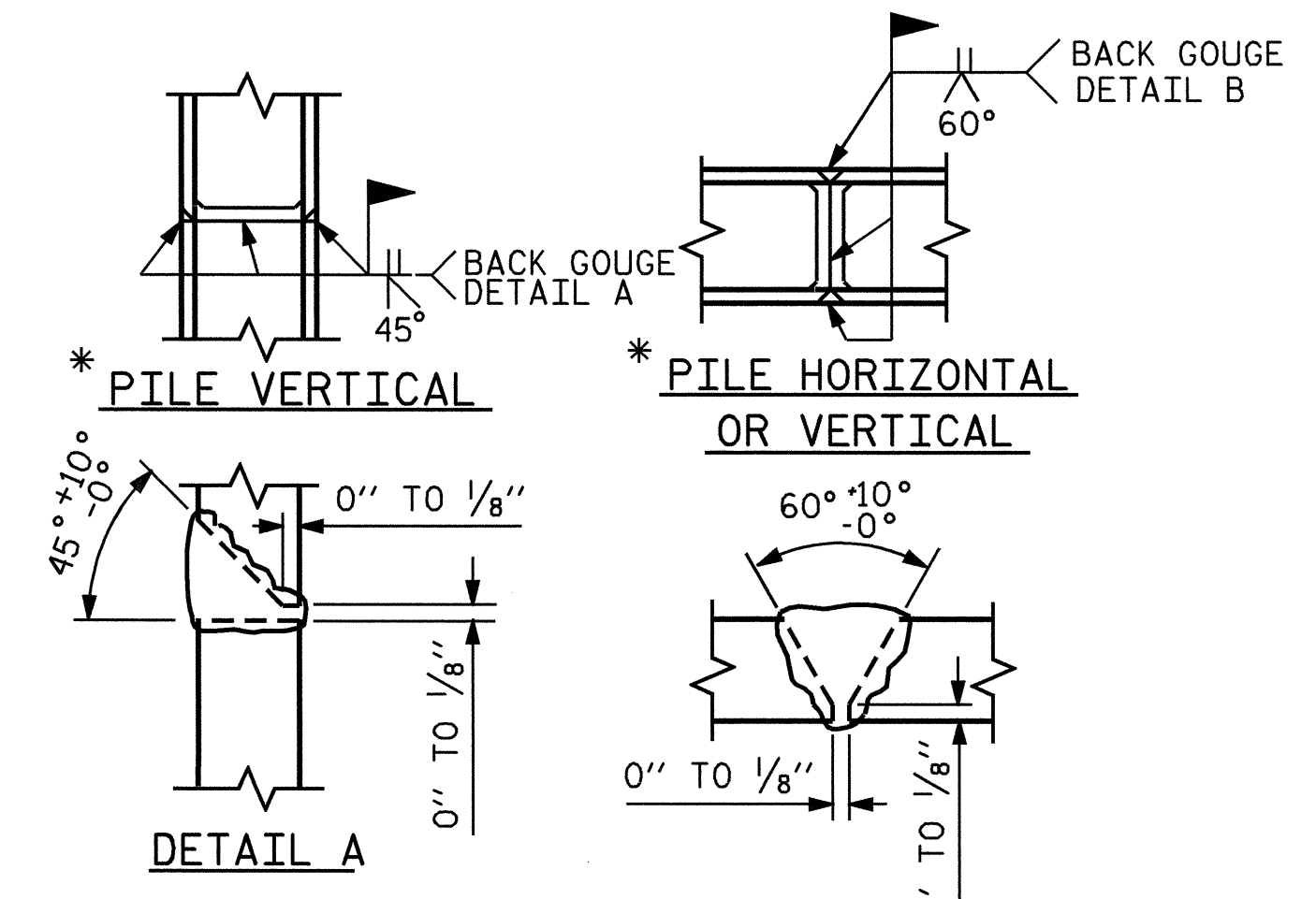
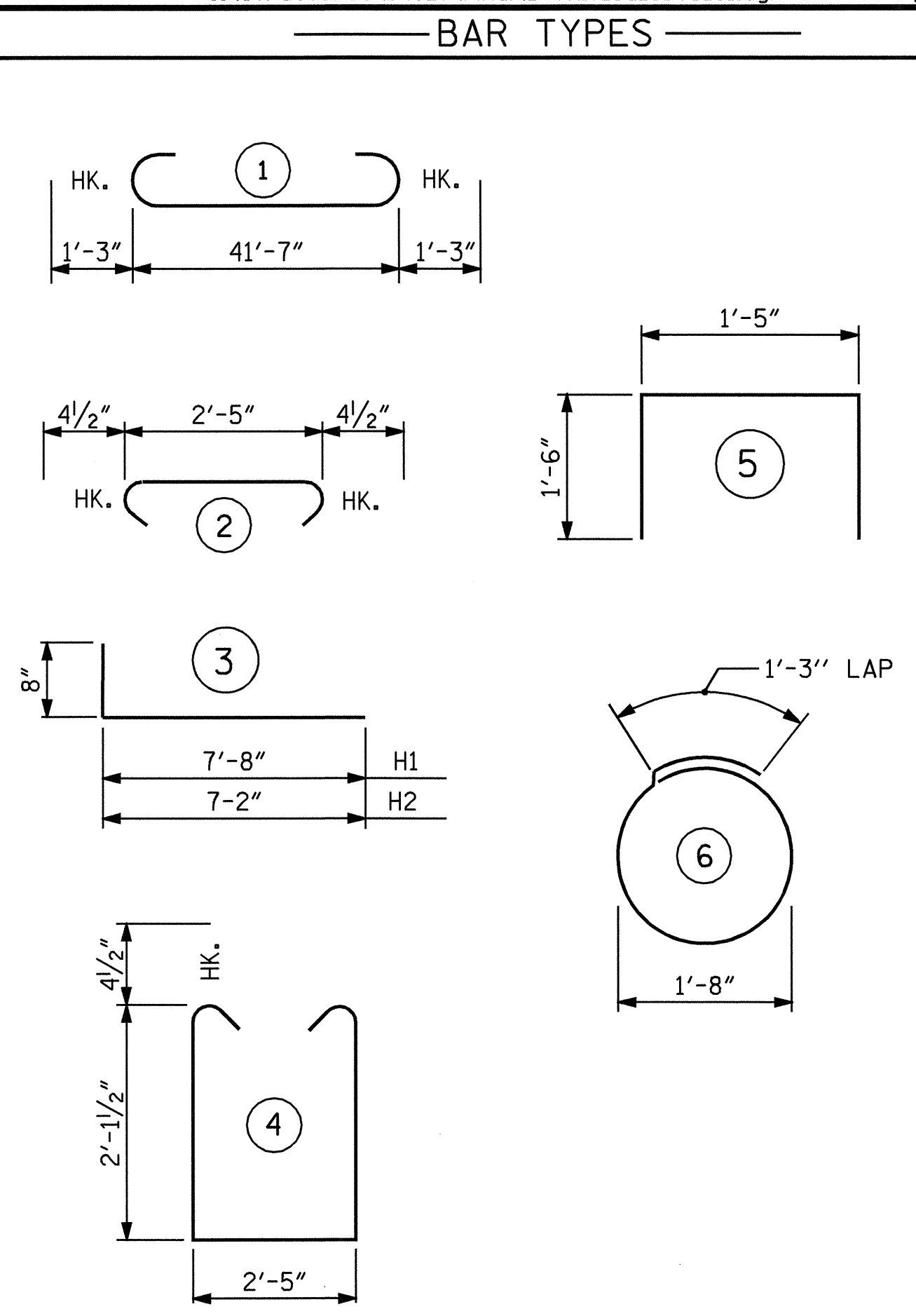


SECTION THRU CAP

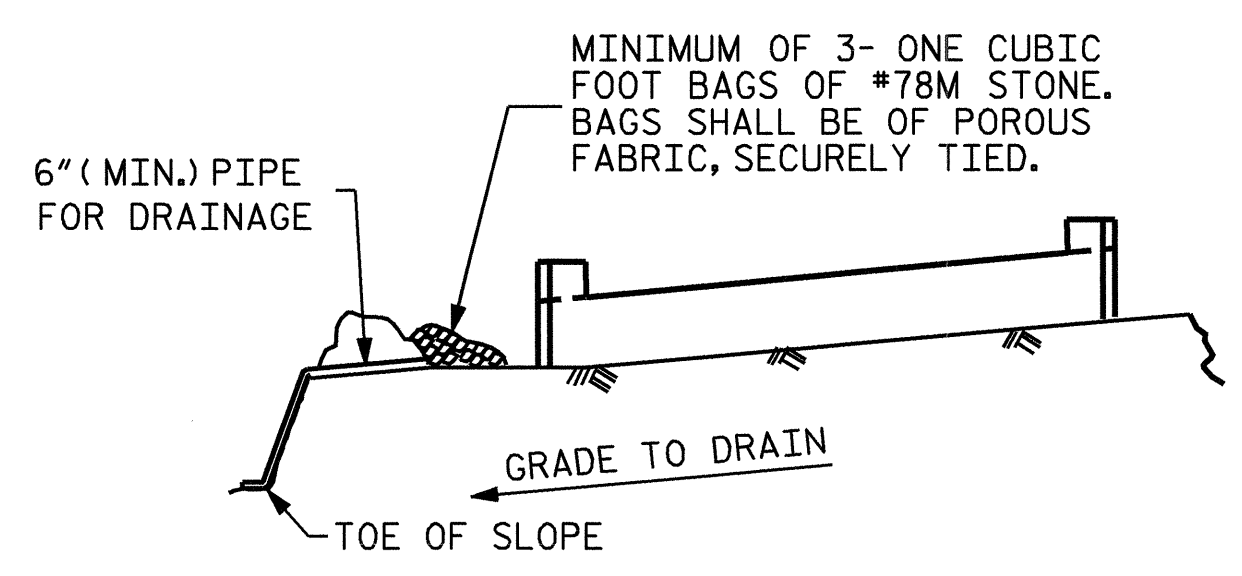


PILE SPLICE DETAILS



ALL BAR DIMENSIONS ARE OUT TO OUT.

BILL OF MATERIAL					
END BENT #2					
BAR	NO.	SIZE	TYPE	LENGTH	WEIGHT
B1	8	9	1	44'-1"	1199
B2	16	4	STR	22'-1"	236
B3	11	4	STR	2'-5"	18
D1	24	6	STR	1'-6"	54
H1	10	5	3	8'-4"	87
H2	10	5	3	7'-10"	82
H3	8	5	STR	2'-6"	21
S1	37	4	4	7'-5"	183
S2	37	4	2	3'-2"	78
S3	12	4	6	6'-6"	52
U1	4	4	5	4'-5"	12
V1	22	5	STR	4'-4"	99
V2	22	5	STR	4'-1"	94
REINFORCING STEEL					2215 LBS
CLASS "A" CONCRETE BREAKDOWN					
POUR #1 CAP & LOWER PART OF WINGS					12.0
CU. YDS.					
POUR #2 UPPER WINGS					1.6
CU. YDS.					
POUR #3 LATERAL GUIDES					0.1
CU. YDS.					
CLASS "A" CONCRETE TOTAL					13.7
CU. YDS.					
HP 12 X 53 STEEL PILES					
NO. 6 360 LIN. FT.					

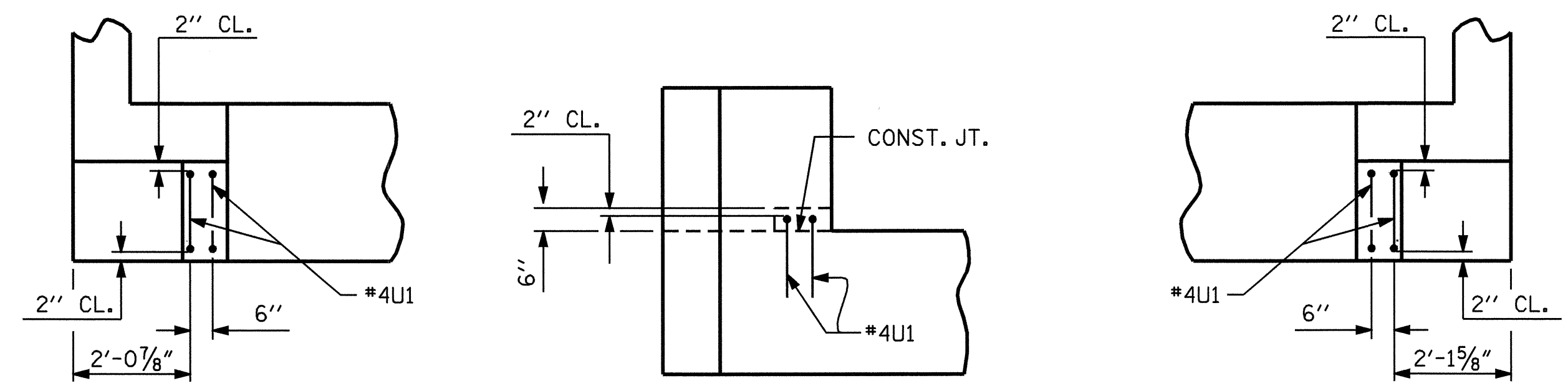


BAGGED STONE AND PIPE SHALL BE PLACED IMMEDIATELY AFTER COMPLETION OF END BENT EXCAVATION. PIPE MAY BE EITHER CONCRETE, CORRUGATED STEEL, CORRUGATED ALUMINUM ALLOY, OR CORRUGATED PLASTIC. PERFORATED PIPE WILL NOT BE ALLOWED.

BAGGED STONE SHALL REMAIN IN PLACE UNTIL THE ENGINEER DIRECTS THAT IT BE REMOVED. THE CONTRACTOR SHALL REMOVE AND DISPOSE OF SILT ACCUMULATIONS AT BAGGED STONE WHEN SO DIRECTED BY THE ENGINEER. BAGS SHALL BE REMOVED AND REPLACED WHENEVER THE ENGINEER DETERMINES THAT THEY HAVE DETERIORATED AND LOST THEIR EFFECTIVENESS.

NO SEPARATE PAYMENT WILL BE MADE FOR THIS WORK AND THE ENTIRE COST OF THIS WORK SHALL BE INCLUDED IN THE UNIT CONTRACT PRICE BID FOR THE SEVERAL PAY ITEMS.

TEMPORARY DRAINAGE AT END BENT



LATERAL GUIDE DETAILS

PROJECT NO. B-4027
BERTIE COUNTY
 STATION: 18+50.00-L-

SHEET 3 OF 3

STATE OF NORTH CAROLINA
 DEPARTMENT OF TRANSPORTATION
 RALEIGH

SUBSTRUCTURE
 END BENT #2



DRAWN BY: S.H. SOCKWELL DATE: 7/7/05
 CHECKED BY: J.P. ADAMS DATE: 7/14/05

REVISIONS						TOTAL SHEETS
NO.	BY:	DATE:	NO.	BY:	DATE:	23
1			3			
2			4			